

United States Department of the Interior  
National Park Service

NR LISTED

APR 26 1996

NATIONAL REGISTER OF HISTORIC PLACES  
REGISTRATION FORM

AHPP

=====

1. Name of Property

=====

historic name: Monument to Confederate Women

other name/site number: PU4770S

=====

2. Location

=====

street & number: State Capitol Grounds

not for publication: N/A

city/town: Little Rock

vicinity: N/A

state: AR county: Pulaski code: AR 119

zip code: 72201

=====

3. Classification

=====

Ownership of Property: Public-state

Category of Property: Object

Number of Resources within Property:

Contributing

Noncontributing

<u>      </u>	<u>      </u>	buildings
<u>      </u>	<u>      </u>	sites
<u>      </u>	<u>      </u>	structures
<u>  <u>  </u></u>	<u>      </u>	objects
<u>  <u>  </u></u>	<u>  <u>  </u></u>	Total

Number of contributing resources previously listed in the National Register: N/A

Name of related multiple property listing: "Something So Dim It Must Be Holy:" Civil War Commemorative Sculpture in Arkansas, 1886-1934

=====

**4. State/Federal Agency Certification**

=====

As the designated authority under the National Historic Preservation Act of 1986, as amended, I hereby certify that this X nomination \_\_\_\_\_ request for determination of eligibility meets the documentation standards for registering properties in the National Register of Historic Places and meets the procedural and professional requirements set forth in 36 CFR Part 60. In my opinion, the property X meets \_\_\_\_\_ does not meet the National Register Criteria. \_\_\_\_\_ See continuation sheet

Cathryn A. Slater \_\_\_\_\_ 3-4-96 \_\_\_\_\_  
Signature of certifying official Date

Arkansas Historic Preservation Program \_\_\_\_\_  
State or Federal agency and bureau

In my opinion, the property X meets \_\_\_\_\_ does not meet the National Register criteria. \_\_\_\_\_ See continuation sheet.

\_\_\_\_\_  
Signature of commenting or other official Date

\_\_\_\_\_  
State or Federal agency and bureau

=====

**5. National Park Service Certification**

=====

I, hereby certify that this property is:

- \_\_\_\_\_ entered in the National Register \_\_\_\_\_  
\_\_\_\_\_ See continuation sheet.
- \_\_\_\_\_ determined eligible for the National Register \_\_\_\_\_  
\_\_\_\_\_ See continuation sheet.
- \_\_\_\_\_ determined not eligible for the National Register \_\_\_\_\_
- \_\_\_\_\_ removed from the National Register \_\_\_\_\_
- \_\_\_\_\_ other (explain) \_\_\_\_\_

\_\_\_\_\_  
Signature of Keeper Date of Action

=====

**6. Function or Use**

=====

Historic: RECREATION AND CULTURE Sub: Monument/marker  
\_\_\_\_\_  
\_\_\_\_\_  
\_\_\_\_\_  
Current: RECREATION AND CULTURE Sub: Monument/marker  
\_\_\_\_\_  
\_\_\_\_\_  
\_\_\_\_\_

=====

## 7. Description

=====

Architectural Classification:

Neoclassical

\_\_\_\_\_

\_\_\_\_\_

Other Description: N/A

Materials:      foundation      CONCRETE/MARBLE/GRANITE      roof      N/A  
\_\_\_\_\_      walls      BRONZE      other      \_\_\_\_\_

Describe present and historic physical appearance.      \_\_\_\_\_ See continuation sheet.

---

### Summary

The Monument to Confederate Women at Little Rock in Pulaski County, also known as "Mother of the South," is located on the south lawn of the east side of the State Capitol building at the corner of West 7th and Marshall Sts. Created by Swiss sculptor J. Otto Schweizer, it depicts a family saying goodbye to their 16-year-old son and brother before he joins his father at the front. There are six tiers to the monument with garlands tied with bows and rosettes decorating under the sixth tier. The lower base is concrete, the mid-section granite (syenite), and the upper part marble. Its dimensions are 11'6.5"x17'7" x17'7". The bronze sculpture, which rests on a marble slab, stands 7'2"x54"x51".

### Elaboration

The Monument to Confederate Women at Little Rock in Pulaski County, also known as "Mother of the South," is located on the south lawn of the east side of the State Capitol building at the corner of West 7th and Marshall Sts. Created by Swiss sculptor J. Otto Schweizer, it depicts a family saying goodbye to their 16-year-old son and brother before he joins his father at the front. The son is dressed in a Confederate uniform with a pouch on the proper rear of his belt and "CSA" on his belt buckle. A blanket is wrapped over his proper left shoulder, across his front and back, and under his proper right arm. He is holding his hat by his side with his proper left hand; his proper left hand is being grasped by his mother. His mother, wearing a dress, is sitting in a chair gazing at her son. Both of her hands are holding her son's hand. The daughter, 14, who is also wearing a dress, is leaning on her mother's proper left shoulder and crying. A young boy, 8, is standing on the mother's proper right. He is holding drumsticks and a drum in his proper right hand, wearing shorts and a short-sleeved shirt, and is also looking at his brother. There are six tiers to the monument with garlands tied with bows and rosettes decorating under the sixth tier. The lower base is concrete, the mid-section granite (syenite), and the upper part marble. Its dimensions are 11'6.5"x17'7" x17'7". The bronze sculpture, which rests on a marble slab, stands 7'2"x54"x51".

Engraved in the lower edge of the proper right of the sculpture is the artist's name: "J. Otto Schweizer."

Engraved in the lower edge of the proper left of the sculpture is the foundry name: "Bureau Bros. / Bronze Founders, Phila. Penna."

On the mid-section of the proper front face of the base is a rectangular bronze plaque that reads "TO THE CONFEDERATE WOMEN OF ARKANSAS, / 1861-1865. ' WHOSE PIOUS MINISTRATIONS TO OUR WOUNDED SOLDIERS / SOOTHED THE LAST HOURS OF THOSE WHO DIED FOR THE / OBJECT OF THEIR TENDEREST LOVE; WHOSE DOMESTIC / LABORS CONTRIBUTED MUCH TO SUPPLY THE WANTS OF / OUR DEFENDERS IN THE FIELD; WHOSE JEALOUS FAITH / IN OUR CAUSE SHONE A GUIDING STAR, UNDIMMED BY THE / DARKEST CLOUDS OF WAR; WHOSE FORTITUDE SUSTAINED / THEM UNDER ALL THE PRIVATIONS TO WHICH THEY WERE / SUBJECTED; AND WHOSE PATRIOTISM WILL TEACH THEIR / SONS TO EMULATE THE DEEDS OF THEIR SIRES.' / THIS MONUMENT IS ERECTED BY / THE STATE OF ARKANSAS AND THE CONFEDERATE VETERANS."

The base has cracks, splits, and is spalling. It is painted with stucco-like paint. During Kelly Bryant's administration as Secretary of State in the 1970s, he treated the existing sculptures on the Capitol grounds with a cleanser, causing fear that the original patina of the works would be ruined. The Monument to Confederate Women has only recently begun to return to its natural green patina. No waxing seems to be taking place for preventative conservation.

=====  
**8. Statement of Significance**  
=====

Certifying official has considered the significance of this property in relation to other properties: Statewide.

Applicable National Register Criteria:   A  

Criteria Considerations (Exceptions):   F  

Areas of Significance:   SOCIAL HISTORY    
\_\_\_\_\_  
\_\_\_\_\_  
\_\_\_\_\_  
\_\_\_\_\_

Period(s) of Significance:   1913   \_\_\_\_\_

Significant Dates:   1913   \_\_\_\_\_

Significant Person(s):   N/A    
\_\_\_\_\_

Cultural Affiliation:   N/A   \_\_\_\_\_

Architect/Builder:   Schweizer, J. Otto    
  Bureau Brothers (founders)    
\_\_\_\_\_

State significance of property, and justify criteria, criteria considerations, and areas and periods of significance noted above.  
\_\_\_\_ See continuation sheet.

## Summary

Criterion A, statewide significance  
Criterion Consideration F

The Monument to Confederate Women is associated with the historic context "Something So Dim It Must Be Holy": Civil War Commemorative Sculpture in Arkansas, 1886-1934 as a commemorative monument financed and erected through the efforts of a veterans' organization in Arkansas. As such, it is eligible under Criterion A with statewide significance for its associations with the efforts of the United Confederate Veterans to reflect members' perception of the noble character and valor of the women who supported the veterans and their cause. Thus, it also meets the eligibility requirements of Criteria Consideration F: Commemorative Properties.

## Elaboration

Confederate Women's monuments were a fairly late addition to the monument-making of the Lost Cause. A tribute to the "ladies of the sixties" was not proposed until July, 1896, at the national United Confederate Veterans reunion in Richmond, Virginia. Interest in this idea began to build and several years later the U.C.V. established a General Committee to coordinate the plans for each state's monument.

At the 1906 meeting of the Arkansas Division, U.C.V. in Fort Smith, it was decided to fully cooperate with the General Committee to work on a women's memorial and a fund raising drive was begun. One means the Arkansas U.C.V. used for raising money was the sale of J. M. Lucey's book of sketches, incidents, narratives, and poems entitled "Confederate Women of Arkansas, '861-1865." The sales of the book were slow, but eventually produced a \$500 profit. The U.C.V.'s financial worries were ended, however, in 1911 when they convinced the state legislature to pass a bill appropriating \$10,000 for the monument.

Having secured the necessary funds, the Arkansas U.C.V. turned its attention to more aesthetic matters and selected sculptor J. Otto Schweizer to create the monument. Although he was not originally contacted by the U.C.V., Schweizer had heard of the plans to build a women's monument in Arkansas and boldly submitted an unsolicited pencil sketch of his concept, which was accepted as the design. Born in Zurich, Switzerland in 1863, he had studied in Paris, Zurich, Dresden, and Italy, and was renowned for his work. The monument was completed by 1913 and Arkansas was poised to become one of the first Southern states to erect a tribute to the women of the Confederacy.

The monument was unveiled before 3,000 onlookers on the Capitol lawn on May 1, 1913. "It will serve to remind future generations of the patient bravery and silent sufferings of those who stayed at home through four long years of civil strife and gave courage and inspiration to the men who wore the gray...the Arkansas women of the Confederacy," the Arkansas Gazette wrote. The 50 surviving Confederate women who were present at the ceremony were given special seats of honor. Civil War veterans from the North and South were also in the audience, watching as 13 young women, each representing a different seceded state, pulled the curtains off the monument to the strains of "Just Before the Battle, Mother." Red and white roses were placed around the base and the crowd surged forward for a closer look. Gen. Charles Coffin gave the presenting speech, explaining the history of the monument and proclaiming of the women that "no nobler band of patriots ever blessed or glorified a nation." Gov. J. M. Futrell accepted the monument on behalf of

the state, and Mrs. Josie Frazee Cappleman, poet laureate of the Trans-Mississippi Division of the U.C.V., read an original poem entitled "Confederate Women."

The Monument to Confederate Women is associated with the historic context 'Something So Dim It Must Be Holy': Civil War Commemorative Sculpture in Arkansas, 1886-1934 as a commemorative monument financed and erected through the efforts of a veterans' organization in Arkansas. As such, it is eligible under Criterion A with statewide significance for its associations with the efforts of the United Confederate Veterans to reflect members' perception of the noble character and valor of the women who supported the veterans and their cause. Thus, it also meets the eligibility requirements of Criteria Consideration F: Commemorative Properties.

=====
9. Major Bibliographical References
=====

Arkansas Gazette, May 2, 1913, p. 1.

Jockers, Ernst. J. Otto Schweizer: The Man and His Work, Philadelphia: International Printing Co., p. 70.

Undated Arkansas Gazette clipping.

\_\_\_ See continuation sheet.

Previous documentation on file (NPS):

- preliminary determination of individual listing (36 CFR 67) has been requested.
- previously listed in the National Register
- previously determined eligible by the National Register
- designated a National Historic Landmark
- recorded by Historic American Buildings Survey # \_\_\_\_\_
- recorded by Historic American Engineering Record # \_\_\_\_\_

Primary Location of Additional Data:

- X State historic preservation office
- Other state agency
- Federal agency
- Local government
- University
- Other -- Specify Repository: \_\_\_\_\_

=====
10. Geographical Data
=====

Acreage of Property: Less than one

Table with 5 columns: UTM References, Zone Easting, Northing, Zone Easting, Northing. Rows A, B, C, D with numerical values and blank lines.

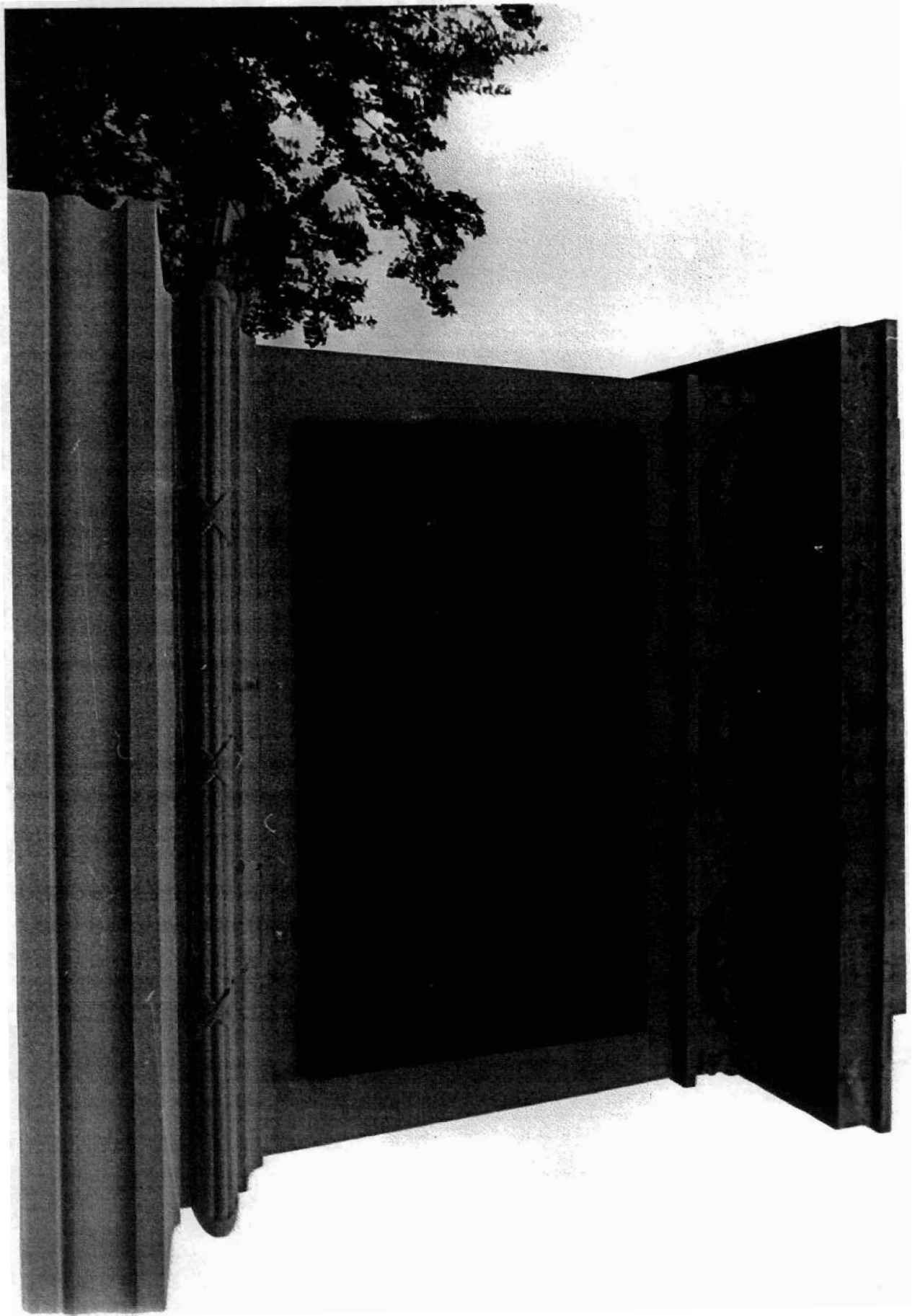
\_\_\_ See continuation sheet.

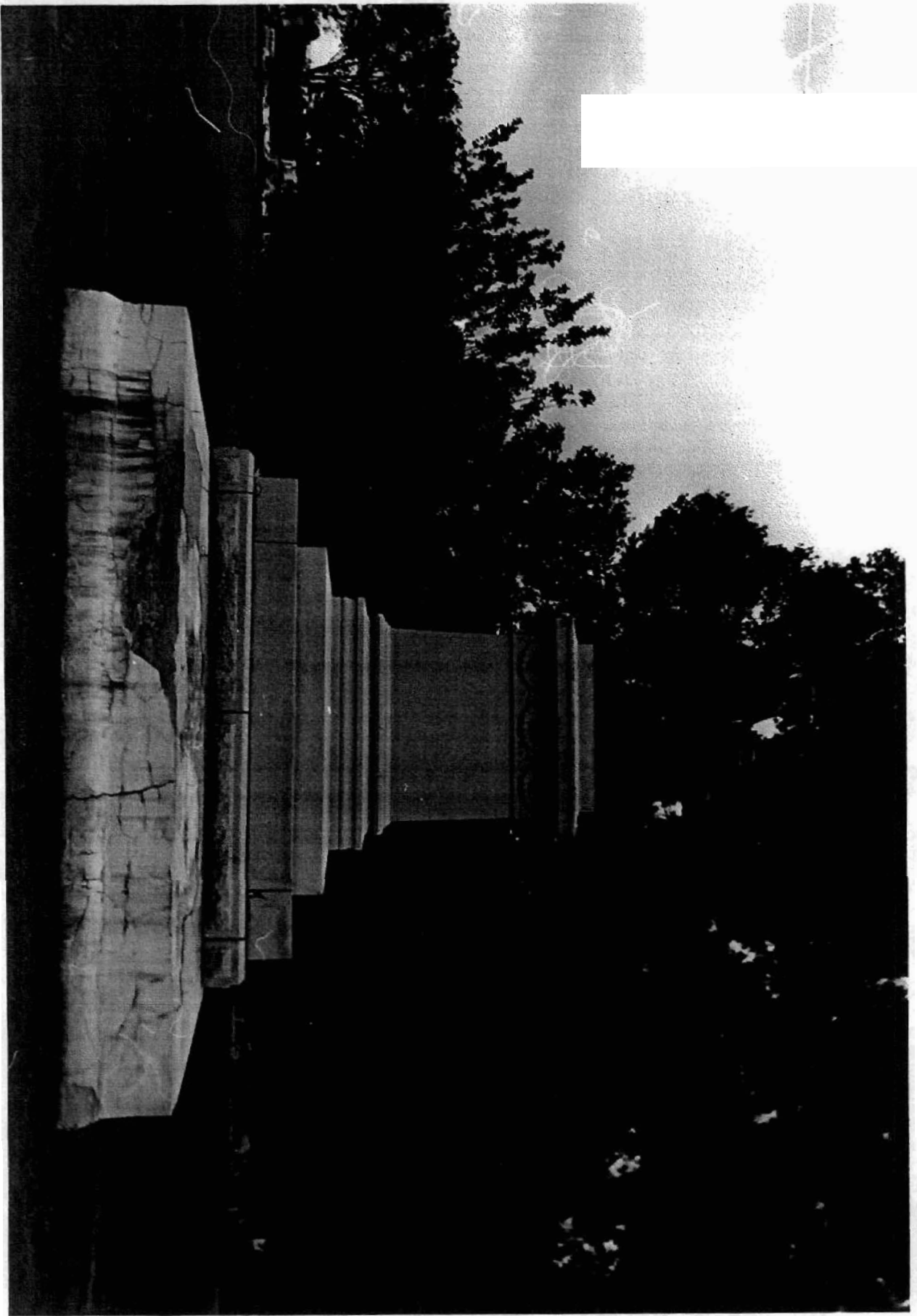
Verbal Boundary Description: \_\_\_ See continuation sheet.









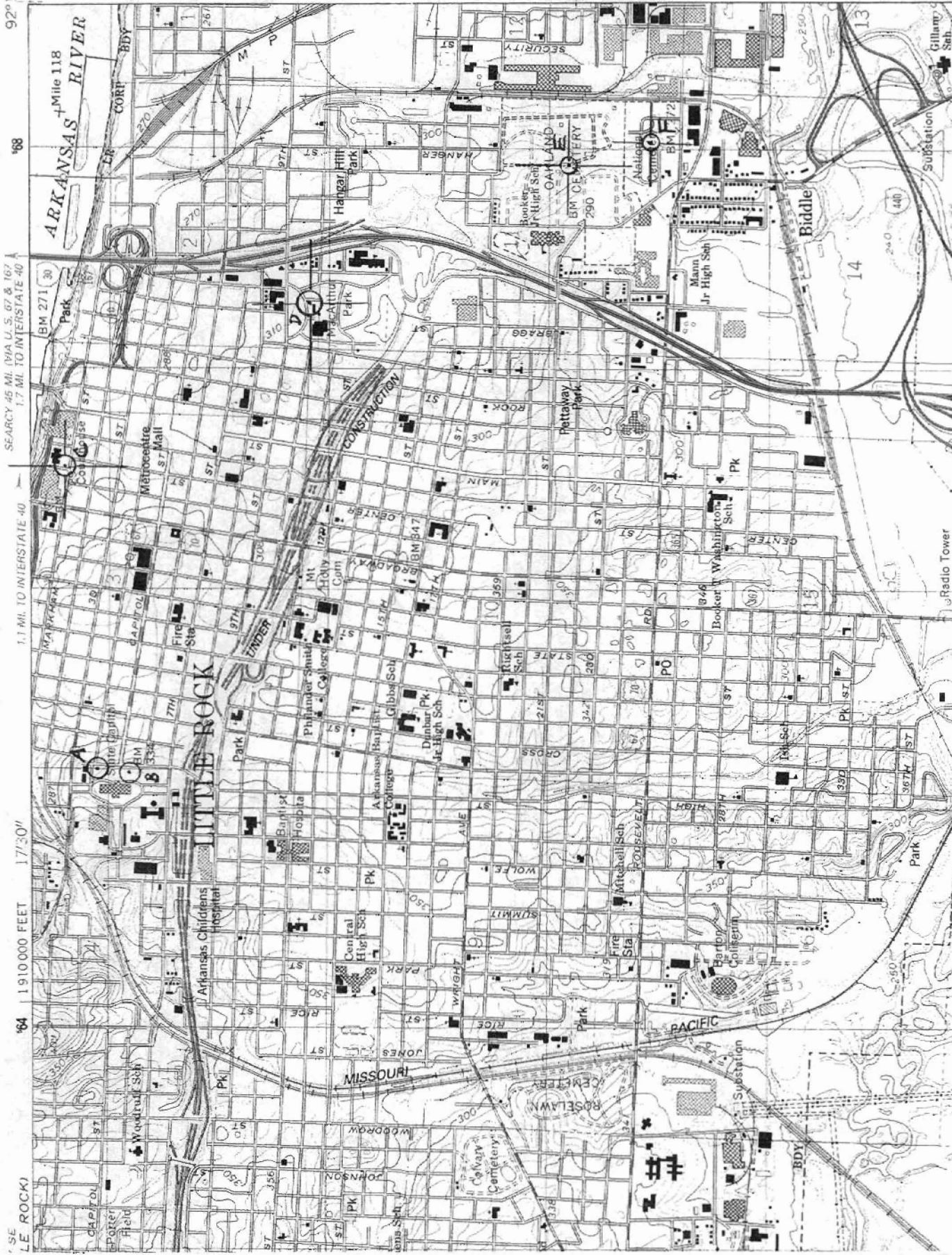


**Civil War Commemorative Sculpture in Arkansas, 1886-1934 maps**

A) CONFEDERATE SOLDIERS MONUMENT  
15/565200/3845060

B) MONUMENT TO CONFEDERATE WOMEN  
15/565100/3844900

LITTLE ROCK QUADRANGLE  
ARKANSAS  
7.5 MINUTE SERIES (TOPOGRAPHIC)



C) DAVID O. DOBB  
MEMORIAL  
#45 15/566630/  
3845250

D) MEMORIAL TO  
COMPANY A,  
CAPITOL GUARDS  
15/567280/  
3844090

E) LITTLE ROCK  
CONFEDERATE  
750 000  
MEMORIAL  
FEET  
15/568120/  
3842690

F) MINNESOTA  
MONUMENT  
15/568040/  
3842540

7551 SW  
MCAALMONT

92° 15'  
34° 45'

SEARCY 45 MI. VIA U.S. 67 & 167  
1.7 MI. TO INTERSTATE 40

1.1 MI. TO INTERSTATE 40

1910000 FEET  
17° 30'

#42