

NR listed 9/10/92

United States Department of the Interior  
National Park Service

NATIONAL REGISTER OF HISTORIC PLACES  
REGISTRATION FORM

1. Name of Property

historic name: Center Valley Well House

other name/site number: PP0047

2. Location

street & number: State Highway 124

not for publication: N/A

city/town: Center Valley

vicinity: N/A

state: AR county: Pope code: AR 115 zip code: 72801

3. Classification

Ownership of Property: Public-local

Category of Property: Structure

Number of Resources within Property:

Contributing	Noncontributing	
_____	_____	buildings
_____	_____	sites
<u>1</u>	_____	structures
_____	_____	objects
<u>1</u>	<u>0</u>	Total

Number of contributing resources previously listed in the National Register: N/A

Name of related multiple property listing: Public Schools in the Arkansas Ozarks, 1920-1940

=====

**4. State/Federal Agency Certification**

=====

As the designated authority under the National Historic Preservation Act of 1986, as amended, I hereby certify that this X nomination \_\_\_\_\_ request for determination of eligibility meets the documentation standards for registering properties in the National Register of Historic Places and meets the procedural and professional requirements set forth in 36 CFR Part 60. In my opinion, the property X meets \_\_\_\_\_ does not meet the National Register Criteria. \_\_\_\_\_ See continuation sheet.

Cathryn A. Byford \_\_\_\_\_ 8-2-92  
Signature of certifying official Date

Arkansas Historic Preservation Program  
State or Federal agency and bureau

In my opinion, the property \_\_\_\_\_ meets \_\_\_\_\_ does not meet the National Register criteria. \_\_\_\_\_ See continuation sheet.

\_\_\_\_\_  
Signature of commenting or other official Date

\_\_\_\_\_  
State or Federal agency and bureau

=====

**5. National Park Service Certification**

=====

I, hereby certify that this property is:

- \_\_\_\_\_ entered in the National Register \_\_\_\_\_  
\_\_\_\_\_ See continuation sheet.
- \_\_\_\_\_ determined eligible for the National Register \_\_\_\_\_  
\_\_\_\_\_ See continuation sheet.
- \_\_\_\_\_ determined not eligible for the National Register \_\_\_\_\_
- \_\_\_\_\_ removed from the National Register \_\_\_\_\_
- \_\_\_\_\_ other (explain): \_\_\_\_\_

\_\_\_\_\_  
Signature of Keeper Date of Action

=====

**6. Function or Use**

=====

Historic: EDUCATION \_\_\_\_\_ Sub: Education-related \_\_\_\_\_  
\_\_\_\_\_  
Current: EDUCATION \_\_\_\_\_ Sub: Education-related \_\_\_\_\_  
\_\_\_\_\_  
\_\_\_\_\_

=====

**7. Description**

=====

Architectural Classification:

LATE 19TH AND EARLY 20TH CENTURY AMERICAN MOVEMENTS

\_\_\_\_\_

\_\_\_\_\_

Other Description: Plain Traditional

Materials: foundation Stone roof Asphalt  
walls Stone other \_\_\_\_\_

Describe present and historic physical appearance. X See continuation sheet.

=====

**8. Statement of Significance**

=====

Certifying official has considered the significance of this property in relation to other properties: Locally.

Applicable National Register Criteria: A

Criteria Considerations (Exceptions): N/A

Areas of Significance: EDUCATION  
SOCIAL HISTORY  
\_\_\_\_\_  
\_\_\_\_\_  
\_\_\_\_\_

Period(s) of Significance: 1940

Significant Dates: N/A

Significant Person(s): N/A

Cultural Affiliation: N/A

Architect/Builder: Works Progress Administration  
\_\_\_\_\_  
\_\_\_\_\_

State significance of property, and justify criteria, criteria considerations, and areas and periods of significance noted above.  
X See continuation sheet.

=====

**9. Major Bibliographical References**

=====

See "Public Schools in the Arkansas Ozarks, 1920-1940" Multiple Property Form, Section H.

\_\_\_ See continuation sheet.

Previous documentation on file (NPS):

- preliminary determination of individual listing (36 CFR 67) has been requested.
- previously listed in the National Register
- previously determined eligible by the National Register
- designated a National Historic Landmark
- recorded by Historic American Buildings Survey # \_\_\_\_\_
- recorded by Historic American Engineering Record # \_\_\_\_\_

Primary Location of Additional Data:

- State historic preservation office
- Other state agency
- Federal agency
- Local government
- University
- Other -- Specify Repository: \_\_\_\_\_

=====

**10. Geographical Data**

=====

Acreage of Property: Less than one

UTM References: Zone Easting Northing      Zone Easting Northing

A	<u>15</u>	<u>492210</u>	<u>3909400</u>	B	_____	_____
C	_____	_____	_____	D	_____	_____

\_\_\_ See continuation sheet.

Verbal Boundary Description: \_\_\_ See continuation sheet.

Beginning at a point formed by the intersection of a line running along the northern edge of State Highway 124 with a perpendicular line running parallel with the well house's eastern elevation and located approximately 25 feet to the east thereof, proceed northerly along said line for a distance of approximately 100 feet to its intersection with a perpendicular line running parallel to the well house's northern elevation; thence proceed westerly along said line for a distance of approximately 100 feet to its intersection with a line running parallel to the well house's western elevation; thence proceed southerly along said line for a distance of approximately 100 feet to its intersection with a perpendicular line running along the northern edge of State Highway 124; thence proceed easterly along said line for a distance of approximately 100 feet to the point of beginning.

Boundary Justification: \_\_\_ See continuation sheet.

This boundary includes both the historic resource and all the surrounding property known to have been historically associated therewith that retains its integrity.

=====

**11. Form Prepared By**

=====

Name/Title: Kenneth Story, National Register Coordinator

Organization: Arkansas Historic Preservation Program Date: July 16, 1992

Street & Number: 225 E. Markham, Suite 300 Telephone: (501) 324-9346

City or Town: Little Rock State: AR ZIP: 72201

United States Department of the Interior  
National Park Service

## National Register of Historic Places Continuation Sheet

Section number 7 Page 1

---

### Summary

The Center Valley Well House is a single story, stone masonry open well house structure with an asphalt shingle hipped roof and low stone walls between the four square stone columns. The low stone walls are coped with concrete and exposed rafters project from beneath the roof deck. The continuous foundation is also constructed of stone.

### Elaboration

The Center Valley Well House is a single story, stone masonry open well house with an asphalt shingle hipped roof and low stone walls between the four square stone columns. The low stone walls are coped with concrete and exposed rafters project from beneath the roof deck. It is a completely symmetrical structure from any perspective, and without a principle axis of any kind.

Constructed as a well shelter for the school water supply, it continues to serve this function today.

United States Department of the Interior  
National Park Service

## National Register of Historic Places Continuation Sheet

Section number 8 Page 1

---

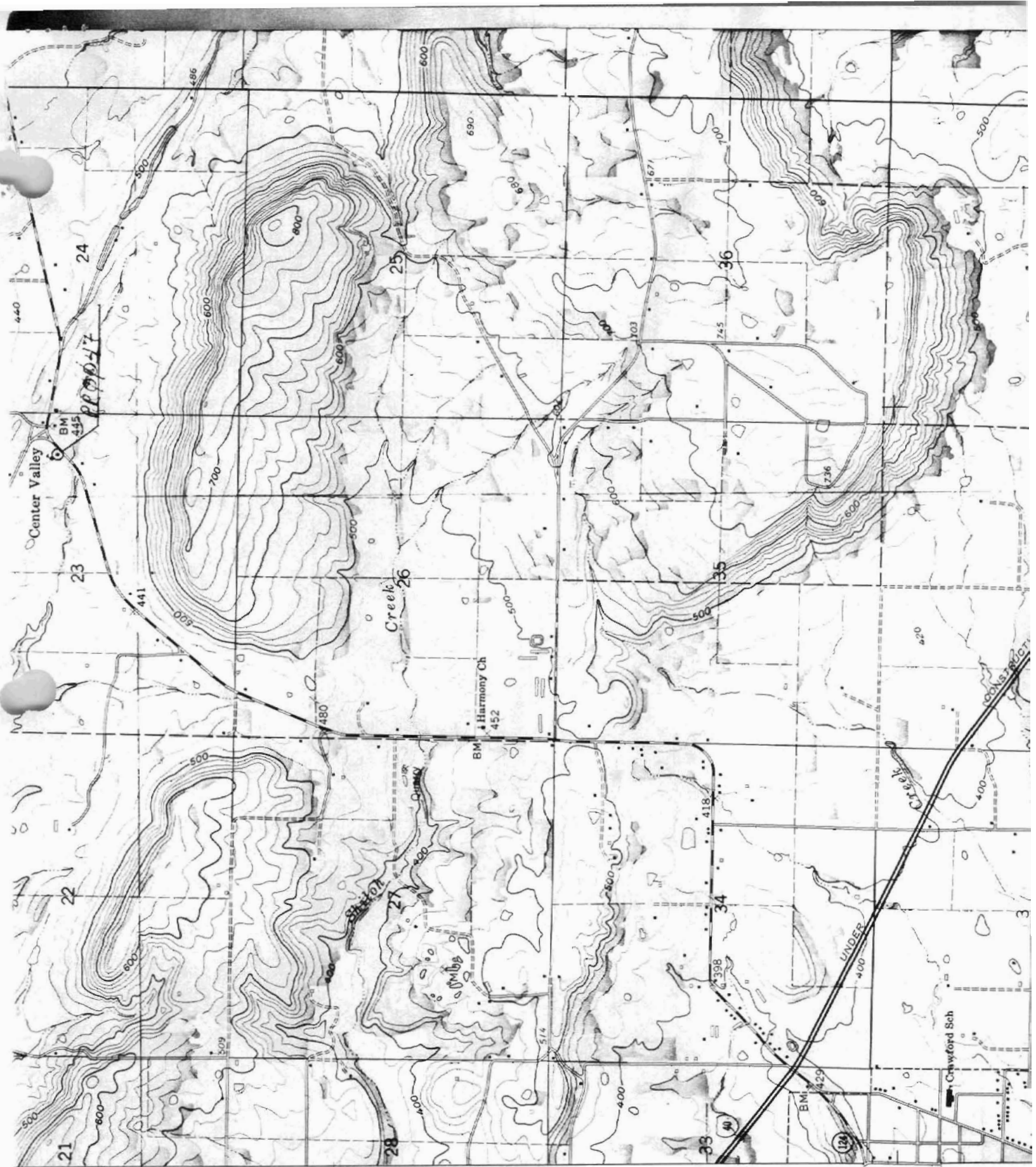
### Center Valley Well House

Center Valley, a tiny community north of Russellville, was dependent on its larger neighbor as an economic locus; coal mining remained the primary economic force and helped to revive the region's economy as the nation geared up for war in the 1940's. In 1940, however, the Depression held sway, and the W.P.A. authorized construction that year on a new school for the Center Valley School District as a means of alleviating unemployment and underemployment in Pope County. The Center Valley Well House was erected in that same year as an afterthought, a companion to the new school building and its campus, utilizing leftover construction materials and mimicking the design of the school itself.<sup>1</sup>

The Center Valley Well House, constructed during the period covered by the historic context *The Evolution of the Public School System in the Arkansas Ozarks, 1920-1940*, is a representative example of a small stone school building constructed for a rural school district. Its documented construction by the W.P.A. and its use during this period as a local school building clearly identify it with this historic context and with this property type. It is significant locally under Criterion A through its direct associations with both the history of the evolution of the public school system in the Ozark Mountain region of the state during this period and the W.P.A.

---

<sup>1</sup>Dallas T. Herndon, ed., Annals of Arkansas, 1947 (Little Rock, Arkansas: The Historical Record Association, 1947), p. 487.



Mike Walker  
 Center Valley  
 Arkansas  
 1/19/22 10/3909400  
 PP0047