

LISTED 09/05/91

United States Department of the Interior
National Park Service

National Register of Historic Places
Registration Form

This form is for use in nominating or requesting determinations of eligibility for individual properties or districts. See instructions in Guidelines for Completing National Register Forms (National Register Bulletin 18). Complete each item by marking "x" in the appropriate box or by entering the requested information. If an item does not apply to the property being documented, enter "N/A" for "not applicable." For functions, styles, materials, and areas of significance, enter only the categories and subcategories listed in the instructions. For additional space use continuation sheets (Form 10-900a). Type all entries.

1. Name of Property

historic name Pattie Cobb Hall

other names/site number Resource #WH2041

2. Location

street & number Harding University 900 E. Center

not for publication N/A

city, town Searcy

vicinity N/A

state Arkansas code AR county White

code 145

zip code 72143

3. Classification

Ownership of Property

- private
- public-local
- public-State
- public-Federal

Category of Property

- building(s)
- district
- site
- structure
- object

Number of Resources within Property

Contributing	Noncontributing
<u>1</u>	<u> </u> buildings
<u> </u>	<u> </u> sites
<u> </u>	<u> </u> structures
<u> </u>	<u> </u> objects
<u>1</u>	<u> </u> Total

Name of related multiple property listing:

Historic and Architectural Resources of White County, Arkansas

Number of contributing resources previously listed in the National Register N/A

4. State/Federal Agency Certification

As the designated authority under the National Historic Preservation Act of 1966, as amended, I hereby certify that this nomination request for determination of eligibility meets the documentation standards for registering properties in the National Register of Historic Places and meets the procedural and professional requirements set forth in 36 CFR Part 60. In my opinion, the property meets does not meet the National Register criteria. See continuation sheet.

Cathryn A. Boyd
Signature of certifying official

5-23-90
Date

State or Federal agency and bureau

In my opinion, the property meets does not meet the National Register criteria. See continuation sheet.

Signature of commenting or other official

Date

State or Federal agency and bureau

5. National Park Service Certification

I, hereby, certify that this property is:

- entered in the National Register. See continuation sheet.
- determined eligible for the National Register. See continuation sheet.
- determined not eligible for the National Register.
- removed from the National Register.
- other, (explain:)

Signature of the Keeper

Date of Action

6. Function or Use

Historic Functions (enter categories from instructions)

Education / Education-Related Housing

Current Functions (enter categories from instructions)

Education / Education-Related Housing

7. Description

Architectural Classification
(enter categories from instructions)

Colonial Revival

Materials (enter categories from instructions)

foundation Concrete

walls Brick

roof Asphalt

other Concrete

Stone

Describe present and historic physical appearance.

8. Statement of Significance

Certifying official has considered the significance of this property in relation to other properties:

nationally statewide locally

Applicable National Register Criteria A B C D

Criteria Considerations (Exceptions) A B C D E F G

Areas of Significance (enter categories from instructions)

Education
Architecture

Period of Significance

1919 - 33
1919

Significant Dates

1919
N/A

Cultural Affiliation

N/A

Significant Person

N/A

Architect/Builder

Unknown

State significance of property, and justify criteria, criteria considerations, and areas and periods of significance noted above.

9. Major Bibliographical References

See "Historic and Architectural Resources of White County, Arkansas,"
Section H.

Previous documentation on file (NPS):

- preliminary determination of individual listing (36 CFR 67) has been requested
- previously listed in the National Register
- previously determined eligible by the National Register
- designated a National Historic Landmark
- recorded by Historic American Buildings Survey # _____
- recorded by Historic American Engineering Record # _____

See continuation sheet

Primary location of additional data:

- State historic preservation office
- Other State agency
- Federal agency
- Local government
- University
- Other

Specify repository: _____

10. Geographical Data

Acreage of property Less than 1 acre

UTM References

A

1	5
---	---

6	7	5	7	6	0
---	---	---	---	---	---

3	9	0	0	9	9	0
---	---	---	---	---	---	---

Zone Easting Northing

B

--	--

--	--	--	--	--	--

--	--	--	--	--	--	--

Zone Easting Northing

C

--	--

--	--	--	--	--	--

--	--	--	--	--	--	--

D

--	--

--	--	--	--	--	--

--	--	--	--	--	--	--

See continuation sheet

Verbal Boundary Description

See continuation sheet

Boundary Justification

See continuation sheet

11. Form Prepared By

name/title Jill Bayles, National Register Historian
 organization Arkansas Historic Preservation Program date 13 November 1989
 street & number 225 E. Markham, Suite 300 telephone 501-371-2763
 city or town Little Rock state AR zip code 72201

**United States Department of the Interior
National Park Service****National Register of Historic Places
Continuation Sheet**Section number 7 Page 1

Description

The building known as Pattie Cobb Hall is located on the tree-shaded campus of Harding University in Searcy. This large, Colonial Revival structure was built in 1919 of reinforced concrete with a brick facade. There have been a few alterations to its exterior throughout the years and the interior was completely renovated in 1988; however, the building's integrity was not affected and it is still in excellent condition.

The dormitory has a three-story, irregular floor plan that includes a full basement and a continuous cast concrete foundation. Its Colonial Revival details include a roof-line balustrade, a full-facade recessed porch supported by Ionic capital columns, dentil molding at the cornice and six-over-six double-hung sash windows with stone sills and keystone lintels. A cast concrete, circular porch has been added to the original one-bay, central front porch on the east elevation. Its two-story-high flat roof is supported by plain concrete columns. The simple wooden balustrades on the first and second stories of the side porch are also recent alterations; the originals that they replaced resembled the roof-line balustrade with its decoratively carved baluster columns.

The two side porches are located on the T-shaped north and south elevations. The recessed porch on the north elevation extends across the entire facade and its three stories are supported by large Ionic columns and brick pilasters. Multi-paned french doors topped with transoms allow entrance from the porch to the building's interior. The porch on the south elevation is an enclosed, two-story projection that exhibits one multi-paned, rounded-arch window on its eastern side. The foundations of these porch elevations also contain unusual rounded-arch openings. The building's longer east and west elevations exhibit a continuous row of the six-over-six double-hung sash windows. The original one-bay, central front porch on the east elevation boasts an unusual set of multi-paned french doors topped not only with a two-part transom window, but also with an elliptical fanlight and keystone. All porches are flat-roofed with dentil molding along the cornices.

**United States Department of the Interior
National Park Service****National Register of Historic Places
Continuation Sheet**Section number 8 Page 1

Significance

Pattie Cobb Hall was built in 1919 as a facility for Galloway Female College, a Methodist institution that was founded in 1889 and continued for the next 44 years as the state's only women's college and one of a mere handful in the entire South [see Historic Context 3: Railroad Era]. The college gained a reputation throughout the area of incorporating high academic and moral standards among its enrollment of "Galloway Girls" and remained a great source of pride to Searcians during its tenure. Its closing in 1933, due to a large deficit and declining attendance, drew emotional protests from members of the community. Fortunately, Harding College, a Church of Christ institution that had been located in Morilton, Arkansas, decided to purchase the Galloway facilities less than a year later [see Historic Context 4: Boom and Bust]. As one of only two remaining buildings from the Galloway College years and the only one without excessive alteration, the dormitory is significant on a statewide level under National Register Criterion A for its association with the area's educational development, and as a symbol of a civilized, cultured lifestyle that resulted from the railroad's influence in an otherwise frontier area [see the associated property type significance statement for Railroad Era Religious and Institutional Buildings].

Its interesting variation of the Colonial Revival style also makes this structure significant on a local level under Criterion C [see the associated property type description statement for Railroad Era Religious and Institutional Buildings]. The dormitory stands as a representative of the forms, methods of construction and high artistic values that were popular during this period of expansion and relative prosperity brought about by the railroad.

**United States Department of the Interior
National Park Service**

National Register of Historic Places Continuation Sheet

Section number 10 Page 1

Acreage of property: Less than one

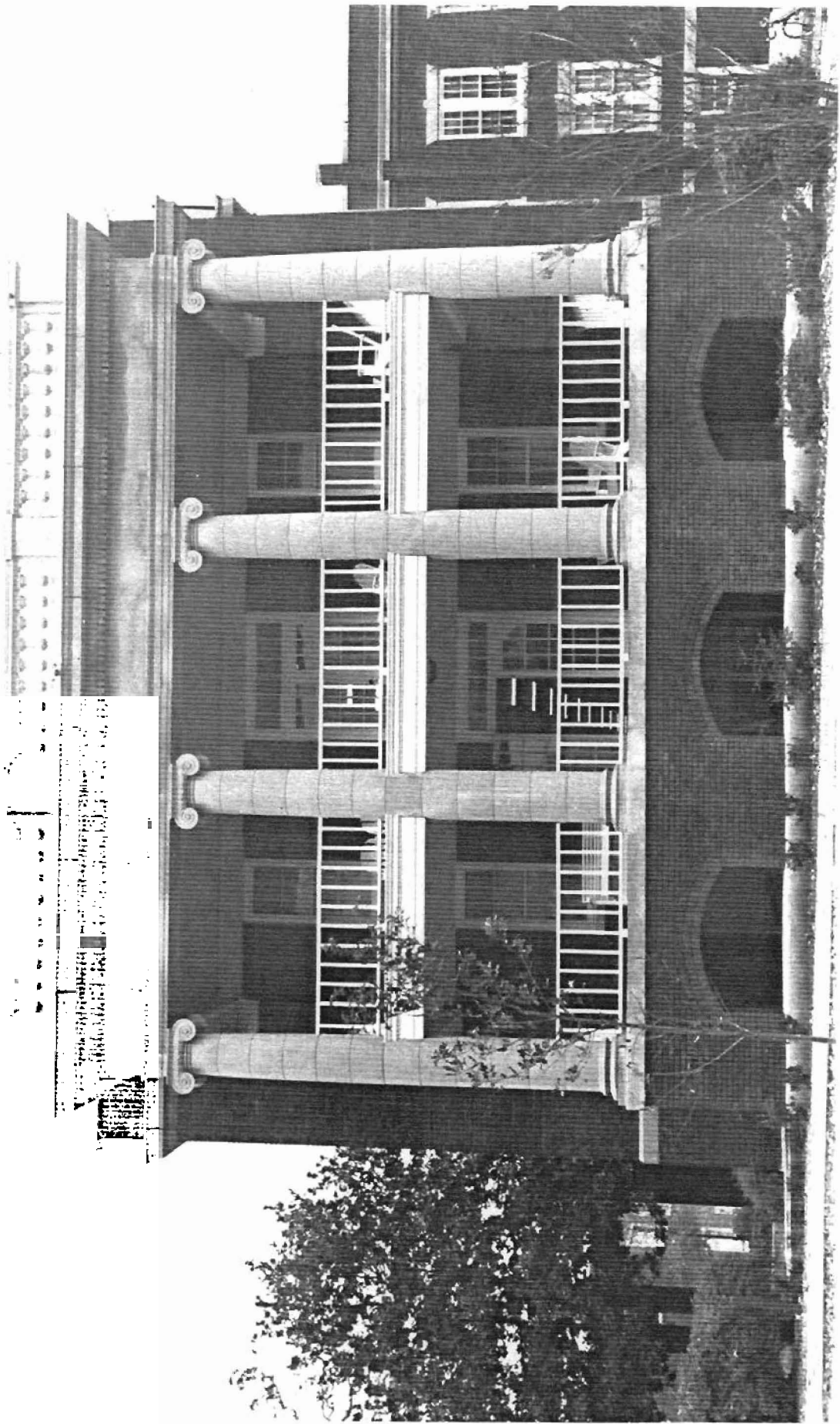
Verbal Boundary Description:

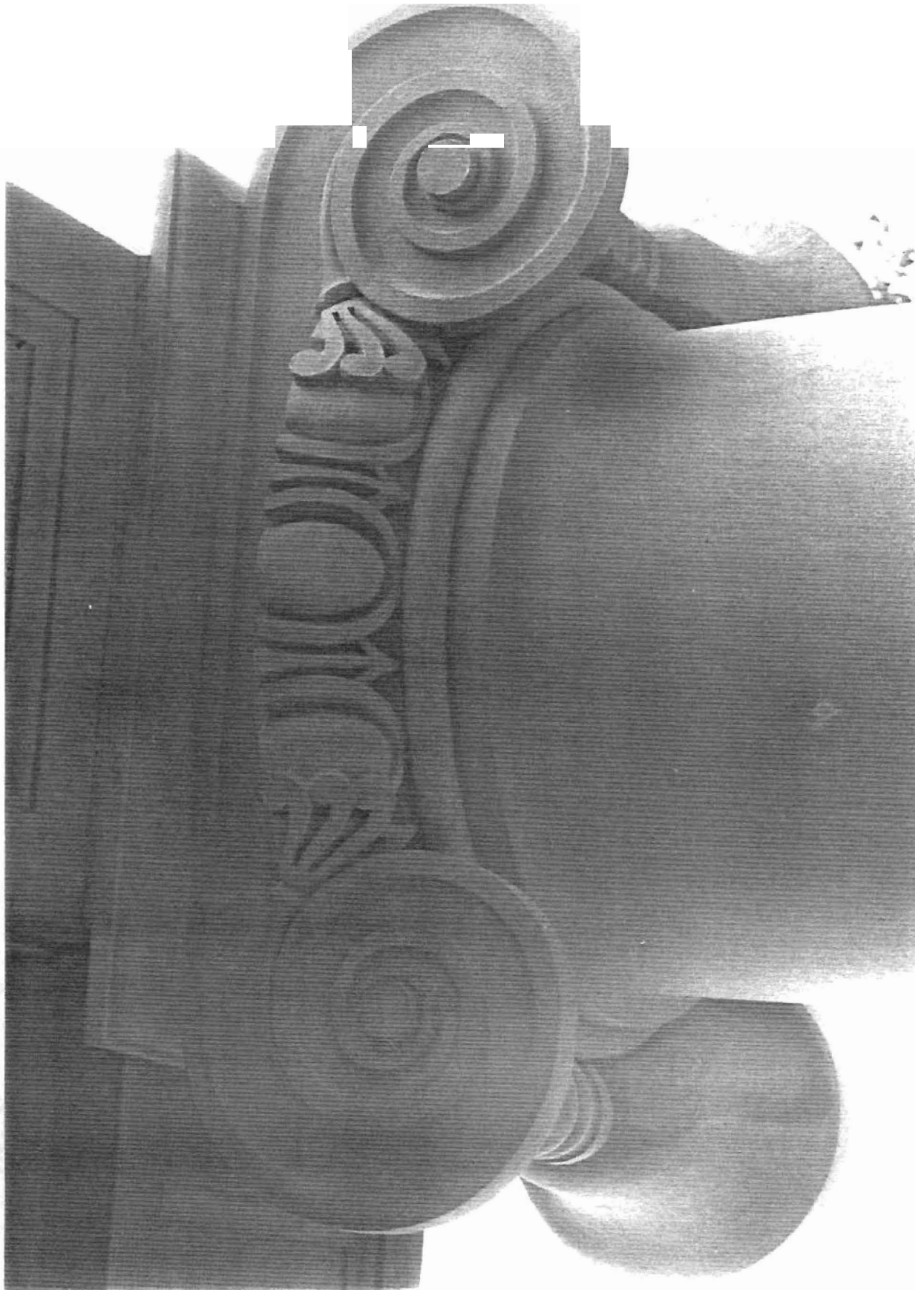
Lot 23 of the Watkins & Quarles Addition to the Town of Searcy.

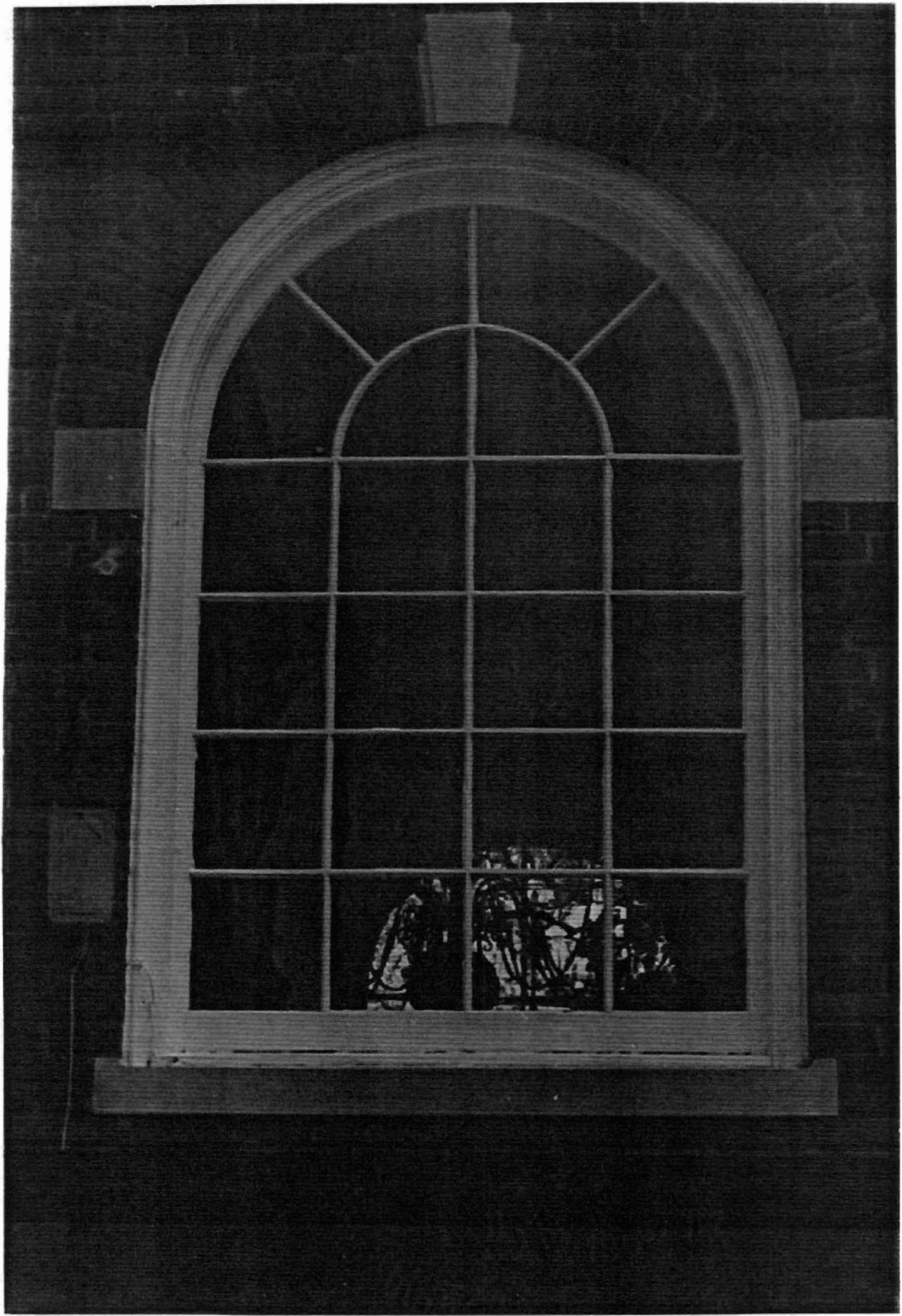
Boundary Justification:

This boundary includes all the property historically associated with this resource.

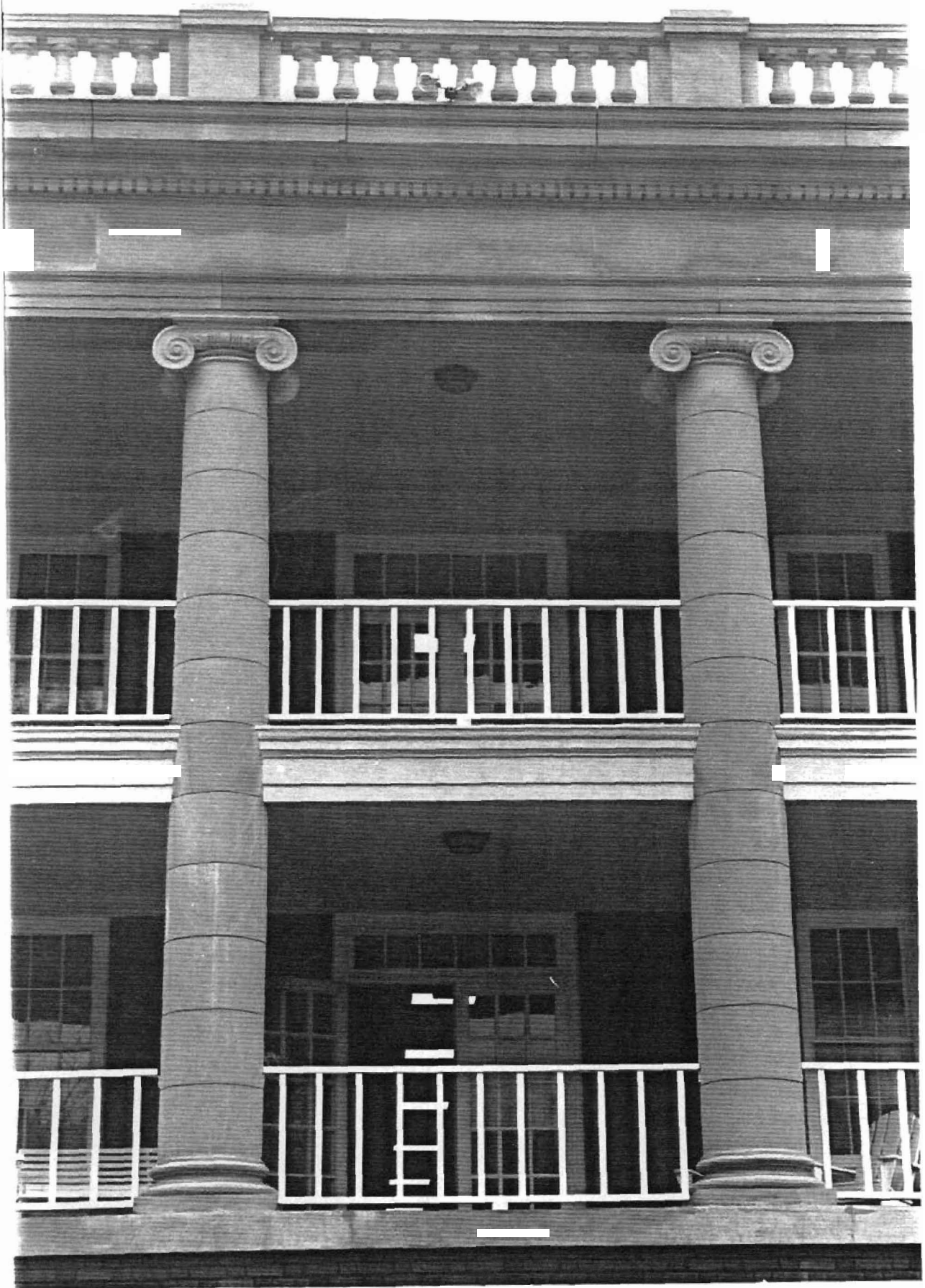




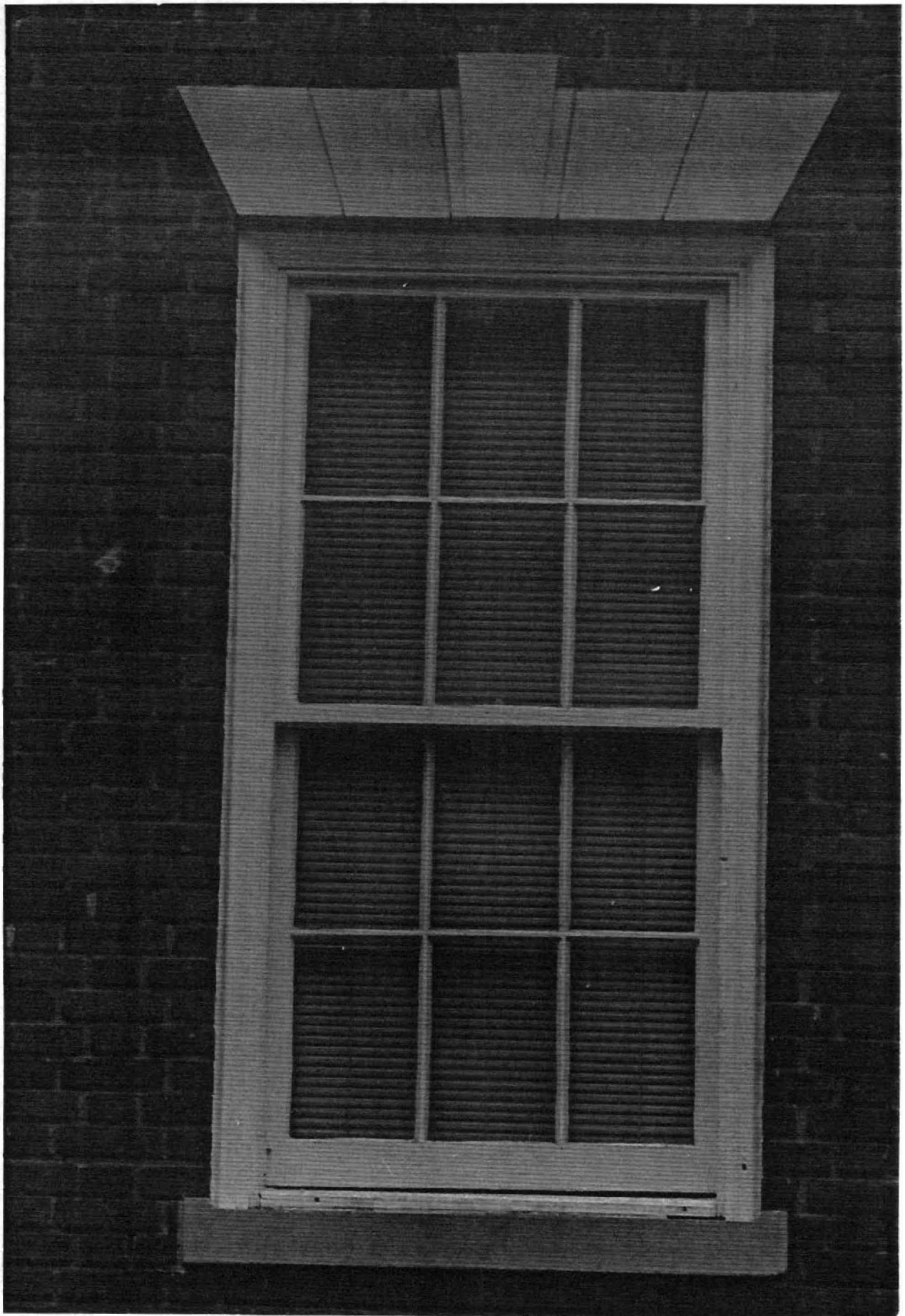




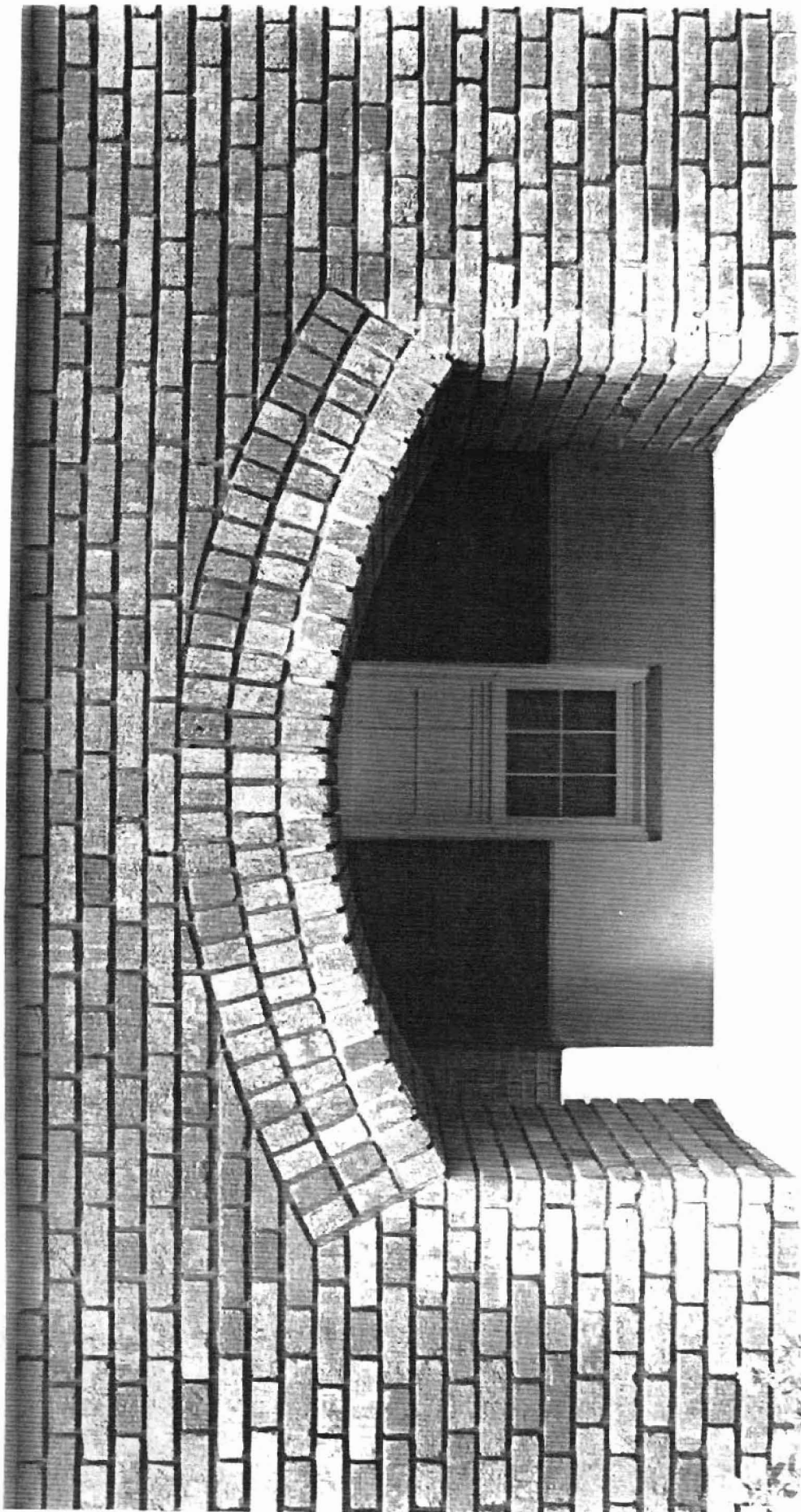




THE UNIVERSITY OF CHICAGO







WH1015 WH0037 WH2143 WH0036

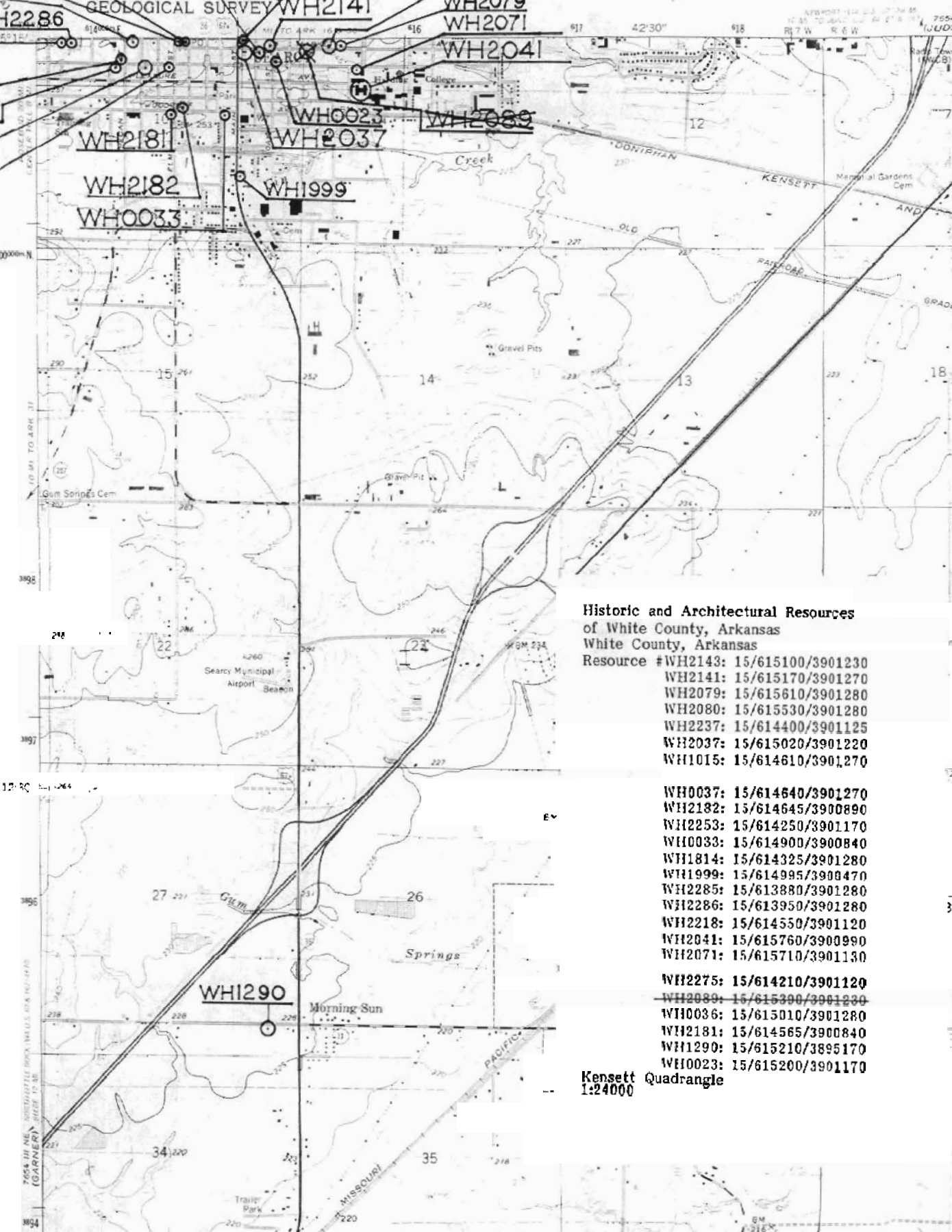
UNITED STATES
DEPARTMENT OF THE INTERIOR
GEOLOGICAL SURVEY

WH1814
WH2286
WH2285
WH2237
WH2218

WH2080
WH2079
WH2071
WH2041

WH2181
WH2182
WH0033
WH1999
WH2037

WH2089



**Historic and Architectural Resources
of White County, Arkansas
White County, Arkansas**

- Resource #WH2143: 15/615100/3901230
- WH2141: 15/615170/3901270
- WH2079: 15/615610/3901280
- WH2080: 15/615530/3901280
- WH2237: 15/614400/3901125
- WH2037: 15/615020/3901220
- WH1015: 15/614610/3901270
- WH0037: 15/614640/3901270
- WH2182: 15/614645/3900890
- WH2253: 15/614250/3901170
- WH0033: 15/614900/3900840
- WH1814: 15/614325/3901280
- WH1999: 15/614995/3900470
- WH2285: 15/613880/3901280
- WH2286: 15/613950/3901280
- WH2218: 15/614550/3901120
- WH2041: 15/615760/3900990
- WH2071: 15/615710/3901130
- WH2275: 15/614210/3901120
- WH2089: 15/615390/3901230
- WH0036: 15/615010/3901280
- WH2181: 15/614565/3900840
- WH1290: 15/615210/3895170
- WH0023: 15/615200/3901170

**Kensett Quadrangle
1:24000**