

6. Function or Use

Historic Functions (enter categories from instructions)

Government/ Correctional Facility

Current Functions (enter categories from instructions)

Vacant/ Not in Use

7. Description

Architectural Classification

(enter categories from instructions)

Other: WPA Architecture

Materials (enter categories from instructions)

foundation Concrete

walls Concrete

roof Concrete

other Iron

Describe present and historic physical appearance.

8. Statement of Significance

Certifying official has considered the significance of this property in relation to other properties:

nationally statewide locally

Applicable National Register Criteria A B C D

Criteria Considerations (Exceptions) A B C D E F G

Areas of Significance (enter categories from instructions)

Law

Period of Significance

1935

Significant Dates

1935

Cultural Affiliation

N/A

Significant Person

N/A

Architect/Builder

Works Progress Administration

State significance of property, and justify criteria, criteria considerations, and areas and periods of significance noted above.

9. Major Bibliographical References

See "Historic and Architectural Resources of White County, Arkansas," Section H.

Previous documentation on file (NPS):

- preliminary determination of individual listing (36 CFR 67) has been requested
- previously listed in the National Register
- previously determined eligible by the National Register
- designated a National Historic Landmark
- recorded by Historic American Buildings Survey # _____
- recorded by Historic American Engineering Record # _____

See continuation sheet

Primary location of additional data:

- State historic preservation office
- Other State agency
- Federal agency
- Local government
- University
- Other

Specify repository: _____

10. Geographical Data

Acreage of property _____

UTM References

A

Zone	Easting	Northing

B

Zone	Easting	Northing

C

--	--	--

D

--	--	--

See continuation sheet

Verbal Boundary Description

See continuation sheet

Boundary Justification

See continuation sheet

11. Form Prepared By

name/title Jill Bayles, National Register Historian
organization Arkansas Historic Preservation Program date 13 November, 1989
street & number 225 E Markham, Suite 300 telephone 501-371-2763
city or town Little Rock state Arkansas zip code 72201

United States Department of the Interior
National Park Service

**National Register of Historic Places
Continuation Sheet**

Section number 7 Page 1

Description

This small, now-abandoned jail, unaltered and in good condition, is located in an alley in the southwest White County town of Beebe and was built in 1935 as a project of the Works Progress Administration. Although its simple design, construction method and materials used can be found in the other WPA jails in the county, the Beebe jail does feature some unique characteristics; namely, a rounded top with parapeted roof, stationary windows, and an interior flue chimney.

The one-story structure is constructed of steel rod-reinforced cast concrete, with cast concrete roof and foundation. The parapet extending above the roofline is also made of cast concrete. The jail's exterior steel door, which has a small barred window, swings open to reveal a second door constructed entirely of iron bars. Inside there are two small cells, each with a barred stationary window; there is also one barred stationary window next to the exterior door across the front elevation. One cell has the interior flue chimney on its north wall, and an interior door separates the two cells.

**United States Department of the Interior
National Park Service**

**National Register of Historic Places
Continuation Sheet**

Section number 8 Page 1

Significance

The Beebe jail is one of only three cast concrete, WPA-constructed jails in the county, and the only one of the three with a parapeted roof, interior flue chimney and stationary windows. [See the associated property type for Depression Era Religious and Institutional Buildings]. Therefore, the jail is locally significant under National Register Criterion C for embodying a particular form and method of construction.

Built in the mid-1930's using WPA labor, the jail symbolizes the Depression era for residents of Beebe, and thus is also locally significant under Criterion A. Beebe is a small town that was settled along both sides of the railroad and was even named for the first president of the Cairo and Fulton line. With its growth so obviously tied to the railroad, Beebe flourished throughout the turn of the century and on into the war years, primarily through shipping vast amounts of fruit and lumber to city markets. Yet this economic dependency upon the railroad eventually threatened the town's stability, especially during the difficult Depression years and subsequent decline of the railroad. [See Historic Context 3: Boom and Bust: The War and Depression Years].

United States Department of the Interior
National Park Service

National Register of Historic Places Continuation Sheet

Section number 10 Page 1

Acreage of property: Less than one

UTM References:

A 15/602510/3881300

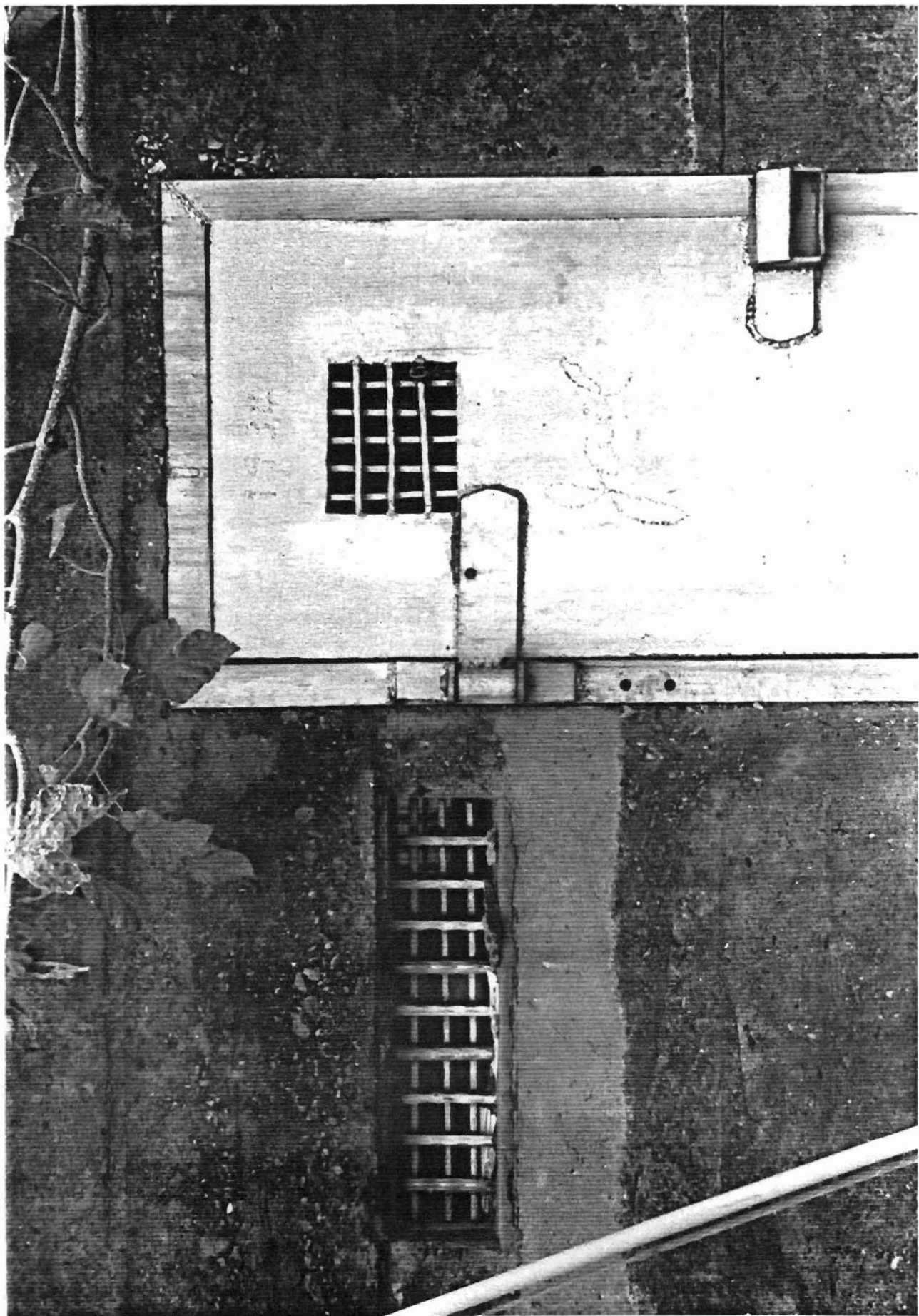
Verbal Boundary Description:

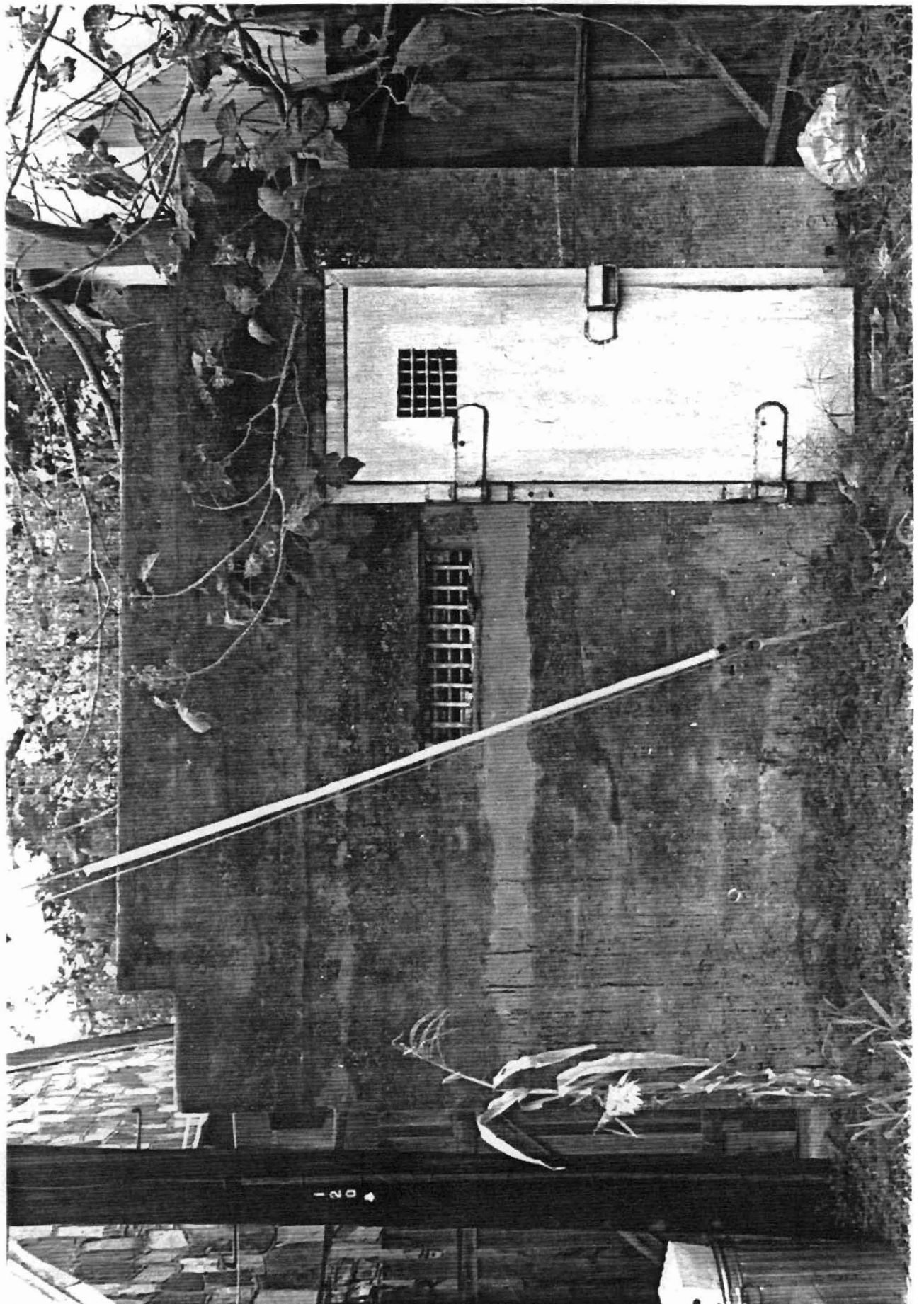
Beginning at a point on the southwest lot line 53 feet northwest of the southeast corner of Lot 12, Block 2, Original Town of Beebe, proceed northeasterly along a perpendicular line for a distance of 30 feet; thence proceed northwesterly along a perpendicular line for a distance of 17 feet; thence proceed southwesterly along a perpendicular line for a distance of 30 feet; thence proceed southeasterly along a perpendicular line for a distance of 17 feet to the point of beginning.

Boundary Justification:

This boundary includes all the property historically associated with this resource.







120

of White County, Arkansas
 White County, Arkansas
 Resolutions

- #WHI412: 15/601940/3882060
- WHI596: 15/602400/3880180
- WHI393: 15/602280/3880950
- WHI380: 15/602040/3881290
- WHI381: 15/602080/3881260
- WHI368: 15/602510/3881300
- WHI449: 15/602250/3881450
- WHI536: 15/601750/3881490
- WHI443: 15/601580/3880960
- WHI587: 15/602400/3880180

Beebe Quadrangle
 1:24000

