

6. Function or Use

Historic Functions (enter categories from instructions)

Education / School

Current Functions (enter categories from instructions)

Education / School

7. Description

Architectural Classification

(enter categories from instructions)

Other: WPA Craftsman Architecture

Materials (enter categories from instructions)

foundation Concrete

walls Brick

roof Asphalt

other Wood

Describe present and historic physical appearance.

=====

8. Statement of Significance

=====

Verifying official has considered the significance of this property in relation to other properties: Locally.

Applicable National Register Criteria: C

Criteria Considerations (Exceptions): _____

Areas of Significance: Architecture

Period(s) of Significance: 1939 _____

Significant Dates: 1939 _____

Significant Person(s): N/A _____

Cultural Affiliation: N/A _____

Architect/Builder: Works Progress Administration _____

State significance of property, and justify criteria, criteria considerations, and areas and periods of significance noted above.
X See continuation sheet.

=====

9. Major Bibliographical References

=====

See "Historic and Architectural Resources of White County, Arkansas," Section

See continuation sheet.

Previous documentation on file (NPS):

preliminary determination of individual listing (36 CFR 67) has been requested.

previously listed in the National Register

previously determined eligible by the National Register

designated a National Historic Landmark

recorded by Historic American Buildings Survey # _____

recorded by Historic American Engineering Record # _____

Primary Location of Additional Data:

State historic preservation office

Other state agency

Federal agency

Local government

University

Other -- Specify Repository: _____

=====

10. Geographical Data

=====

acreage of Property: Less than 1 acre

UTM References: Zone Easting Northing Zone Easting Northing

A 15 623180 3887050 B _____

C _____ D _____

See continuation sheet.

Verbal Boundary Description: _____ See continuation sheet.

Boundary Justification: See continuation sheet.

=====

11. Form Prepared By

=====

Name/Title: Jill Bayles, National Register Historian

Organization: Arkansas Historic Preservation Program Date: 13 November 1989

Street & Number: 225 E. Markham, Suite 300 Telephone: (501) 324-9346

City or Town: Little Rock State: AR ZIP: 72201

United States Department of the Interior
National Park Service

National Register of Historic Places Continuation Sheet

Section number 7 Page 1

Description

The Griffithville School, built by the Works Progress Administration in 1939, employs Craftsman features and has a construction method and design that is characteristic of the federally funded institutional buildings from the late 1930's. The building, located along a state highway in Griffithville, is still used as a school, is in good condition, and has undergone very little alteration within the last fifty years.

The long, rectangular, one-story structure is of frame construction with a brick veneer. Its Craftsman elements include three gable dormer windows along the north elevation, exposed rafters underneath both the gable-on-hip roof and the dormer windows, and multi-paned stationary windows running the entire length of the north and south elevations.

Three gable-roofed stoop porches supported by brick columns are located on the north and east elevations, with a larger, gable-roofed side porch located on the west elevation. This side porch is supported by four brick columns, has decorative braces under its gable, and a set of multi-paned french doors topped with a multi-paned, stationary transom window that allows access to the interior. The other doors entering off of the stoop porches are also multi-paned and topped by stationary transoms. The roof is covered with composition shingles and the foundation, housing a partial cellar, is made of cast concrete.

United States Department of the Interior
National Park Service

National Register of Historic Places Continuation Sheet

Section number 8 Page 1

Significance

The Griffithville School is one of only a few government-funded schools in White County constructed of brick rather than native stone, which was the preferred material of Works Progress and Civilian Conservation Corps workers. Its design, however, follows the same floorplan and stylistic details as other WPA and CCC buildings. The long, rectangular plan is highlighted by Craftsman and Prairie style features, which, as discussed in the associated property type for Depression Era Religious and Institutional Buildings, became characteristic of government-funded properties and also influenced the design of private properties for several years. Therefore, this property is significant under National Register Criterion C for generating a particular form, method of construction and style that became popular during this period. The 1939 construction date of this school makes it one of the county's last eligible structures and limits its period of significance to one year.

As discussed in Historic Context 3: Boom and Bust Era, the school is also historically significant under Criterion C because of its association with the Works Progress Administration, one of several federal relief programs that entered the entire state during the Depression years and provided not only jobs for its workers, but also the most modern and complete educational buildings and recreational centers that most residents of these small areas had ever seen. Often these buildings also displayed the only architectural features in these primarily vernacular communities.

The small community of Griffithville had its beginnings in the 1850's, when it was known as Dogwood Township. Its settlers were farmers whose small, self-sufficient farmsteads were scattered throughout the area. With the advent of the railroad in the late 1800's, the community finally developed into a town, and could boast of a sawmill, a general store and post office, and a Baptist church. With this new growth, the residents decided to give their community an official name, and they chose Griffithville in honor of the man sent by the Rock Island Railroad to survey the area. In 1900, the first public school was constructed, which consisted of eight grades in one room.

Although the Depression forced two grocery stores and the town's cafe to close, the school continued to expand. The final four grades were added by 1934 and six smaller schools were consolidated, bringing the enrollment to about 100 by the time the WPA finished the new building in 1939.

United States Department of the Interior
National Park Service

National Register of Historic Places Continuation Sheet

Section number 10 Page 1

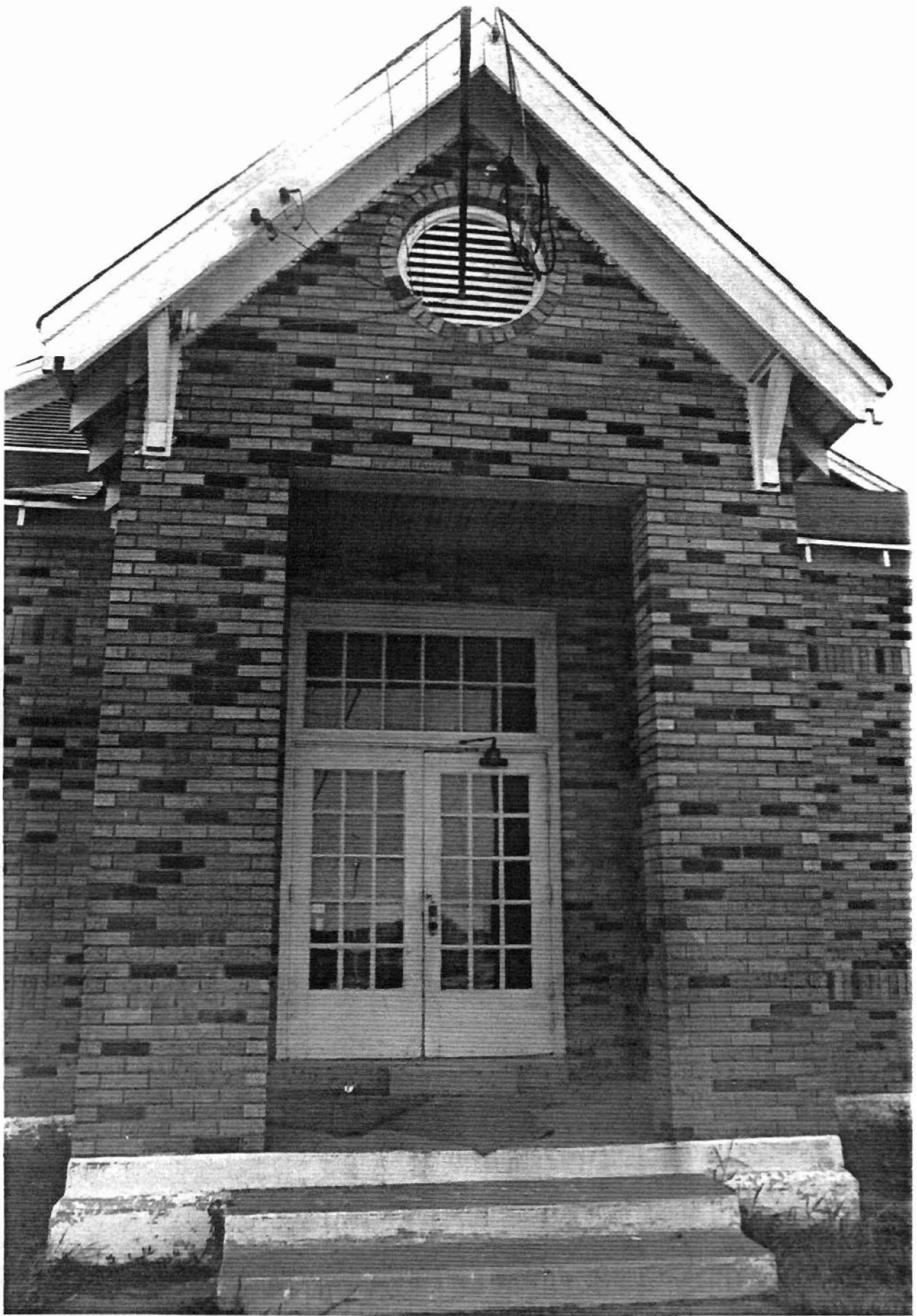
Verbal Boundary Description:

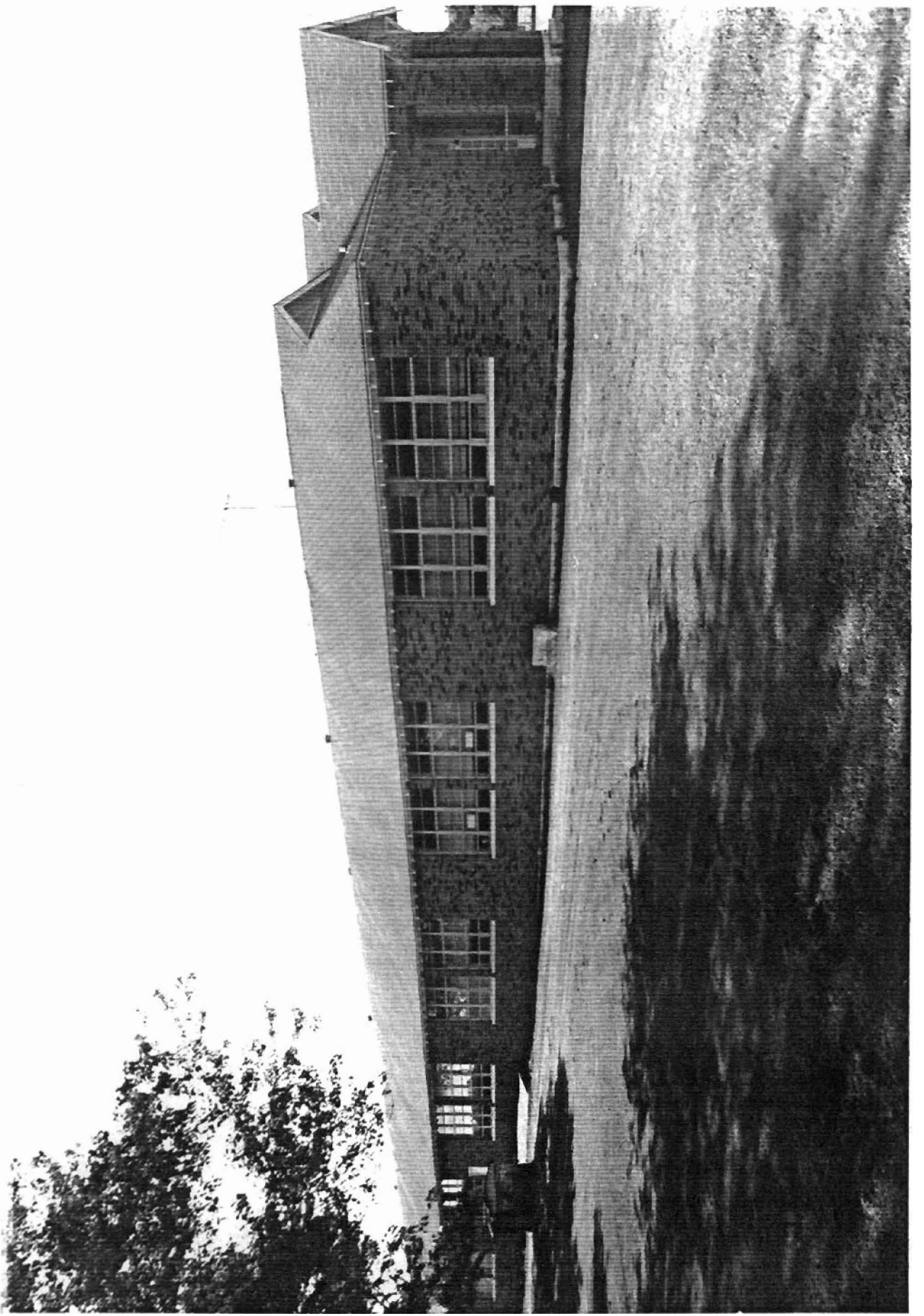
Beginning at the point formed by the intersection of the southern edge of State Highway 11 with a perpendicular line running parallel to the western elevation of the school and located approximately 25 feet to the west thereof, proceed southerly along said line for a distance of approximately 200 feet to a point formed by its intersection with a perpendicular line running parallel to the southern elevation of the school; thence proceed easterly for a distance of approximately 200 feet along said line to a point formed by its intersection with a perpendicular line running parallel to the eastern elevation of the school; thence proceed northerly along said line for a distance of approximately 200 feet to a point formed by its intersection with a perpendicular line running along the southern edge of State Highway 11; thence proceed westerly along said line for a distance of approximately 200 feet to the point of beginning.

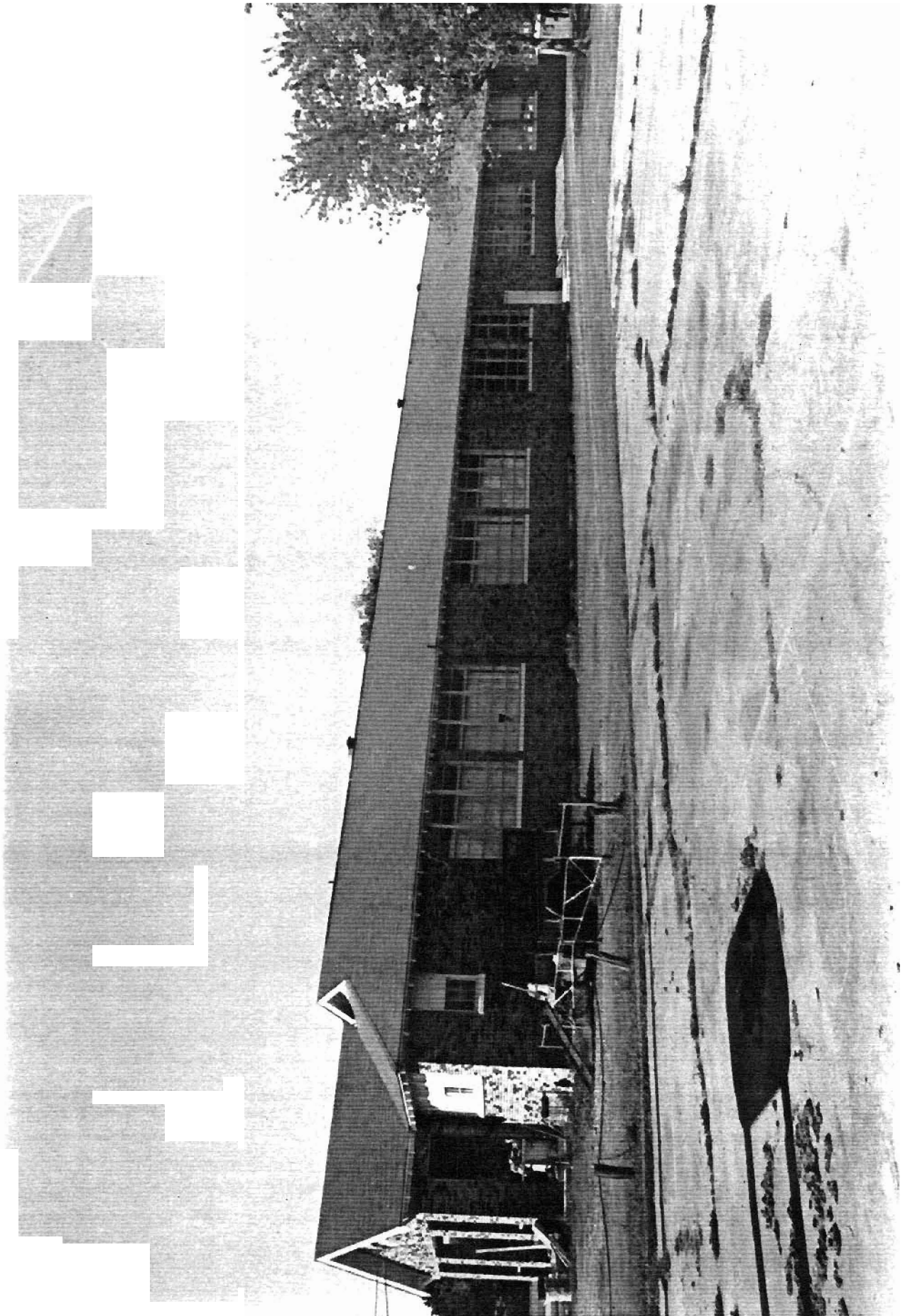
Boundary Justification:

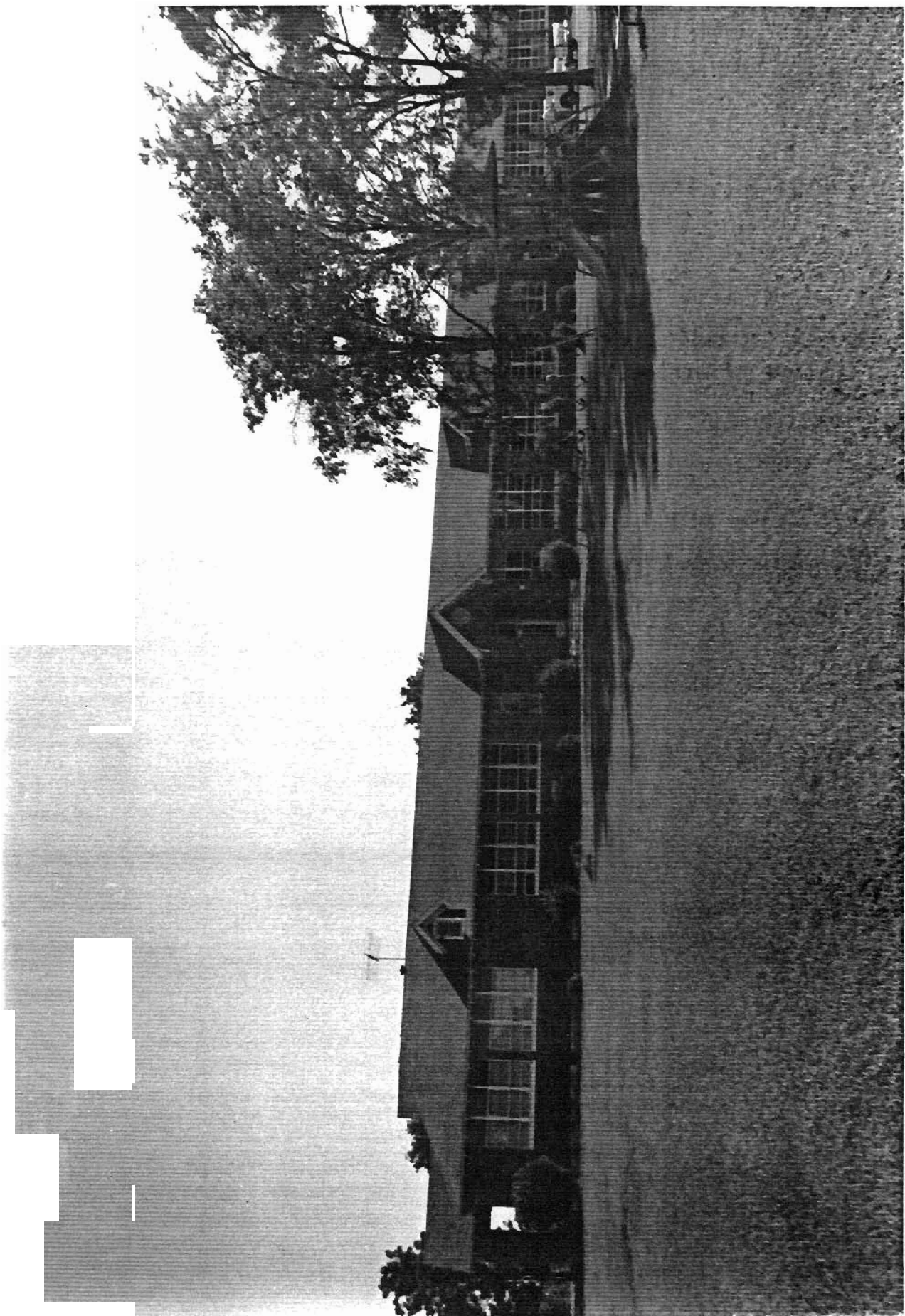
The original lot has been subdivided during the non-historic period, resulting in an indefinite current lot boundary; therefore, this boundary includes all the property historically associated with this resource that retains its integrity.



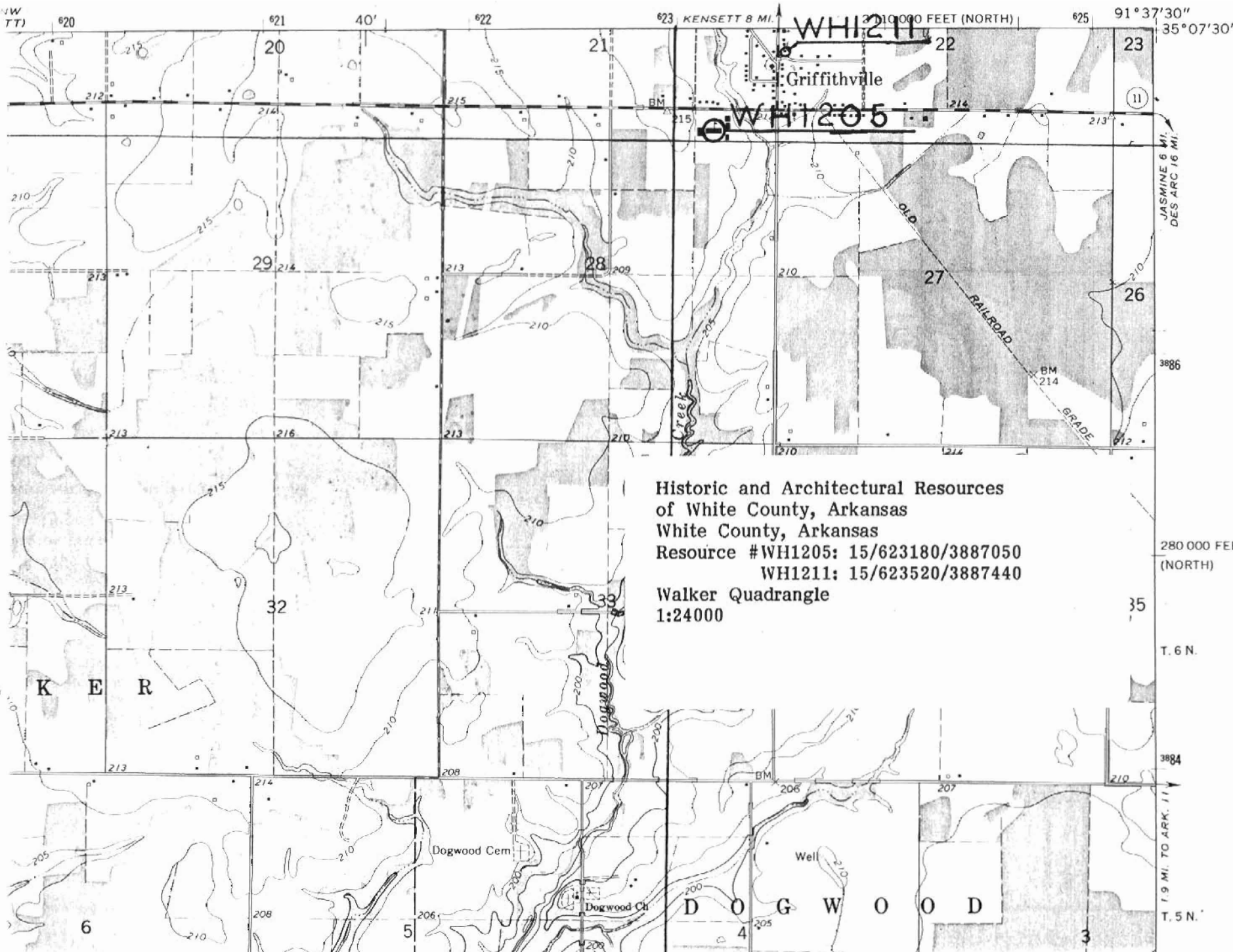








WALKER QUADRANGLE
 ARKANSAS
 7.5 MINUTE SERIES (TOPOGRAPHIC)



Historic and Architectural Resources
 of White County, Arkansas
 White County, Arkansas
 Resource #WH1205: 15/623180/3887050
 WH1211: 15/623520/3887440
 Walker Quadrangle
 1:24000

280 000 FEE
 (NORTH)
 35
 T. 6 N.
 3884
 1.9 MI. TO ARK. 11
 T. 5 N.