

NRLsted 7/12/92

United States Department of the Interior National Park Service

National Register of Historic Places Registration Form

This form is for use in nominating or requesting determinations of eligibility for individual properties or districts. See instructions in Guidelines for Completing National Register Forms (National Register Bulletin 16). Complete each item by marking "x" in the appropriate box or by entering the requested information. If an item does not apply to the property being documented, enter "N/A" for "not applicable." For functions, styles, materials, and areas of significance, enter only the categories and subcategories listed in the instructions. For additional space use continuation sheets (Form 10-900a). Type all entries.

1. Name of Property

historic name Fox Motel House
other names/site number Resource #WHO740

2. Location

street & number Highway 367
city, town Bald Knob
state Arkansas code AR county White code 145 zip code 72010

3. Classification

Ownership of Property: [X] private
Category of Property: [X] building(s)
Number of Resources within Property: Contributing 1, Noncontributing 0, Total 1

Name of related multiple property listing: Historic and Architectural Resources of White County, Arkansas

4. State/Federal Agency Certification

As the designated authority under the National Historic Preservation Act of 1966, as amended, I hereby certify that this [X] nomination [ ] request for determination of eligibility meets the documentation standards for registering properties in the National Register of Historic Places and meets the procedural and professional requirements set forth in 36 CFR Part 60. In my opinion, the property [X] meets [ ] does not meet the National Register criteria. [ ] See continuation sheet.
Signature of certifying official: Catherine H. Byrd
Date: 5-13-90
Arkansas Historic Preservation Program

In my opinion, the property [ ] meets [ ] does not meet the National Register criteria. [ ] See continuation sheet.
Signature of commenting or other official
Date
State or Federal agency and bureau

5. National Park Service Certification

I, hereby, certify that this property is:
[ ] entered in the National Register. [ ] See continuation sheet.
[ ] determined eligible for the National Register. [ ] See continuation sheet.
[ ] determined not eligible for the National Register.
[ ] removed from the National Register.
[ ] other, (explain:)
Signature of the Keeper Date of Action

**6. Function or Use**

Historic Functions (enter categories from instructions)

Domestic/ Hotel

Current Functions (enter categories from instructions)

Vacant/ Not in Use

**7. Description**

Architectural Classification

(enter categories from instructions)

Late 19th and 20th Century American  
Movements/ Craftsman

Materials (enter categories from instructions)

foundation concrete

walls weatherboard

roof asphalt shingle

other \_\_\_\_\_

Describe present and historic physical appearance.

**8. Statement of Significance**

Certifying official has considered the significance of this property in relation to other properties:

nationally     statewide     locally

Applicable National Register Criteria     A     B     C     D

Criteria Considerations (Exceptions)     A     B     C     D     E     F     G

Areas of Significance (enter categories from instructions)

ARCHITECTURE  
\_\_\_\_\_  
\_\_\_\_\_  
\_\_\_\_\_  
\_\_\_\_\_

Period of Significance

c. 1925  
\_\_\_\_\_  
\_\_\_\_\_

Significant Dates

c. 1925  
\_\_\_\_\_  
\_\_\_\_\_

Cultural Affiliation

N/A  
\_\_\_\_\_  
\_\_\_\_\_

Significant Person

N/A  
\_\_\_\_\_

Architect/Builder

unknown  
\_\_\_\_\_

State significance of property, and justify criteria, criteria considerations, and areas and periods of significance noted above.

See continuation sheet

**9. Major Bibliographical References**

See "Historic and Architectural Resources of White County, Arkansas," Section H.

**Previous documentation on file (NPS):**

- preliminary determination of individual listing (36 CFR 67) has been requested
- previously listed in the National Register
- previously determined eligible by the National Register
- designated a National Historic Landmark
- recorded by Historic American Buildings Survey # \_\_\_\_\_
- recorded by Historic American Engineering Record # \_\_\_\_\_

See continuation sheet

**Primary location of additional data:**

- State historic preservation office
- Other State agency
- Federal agency
- Local government
- University
- Other

Specify repository: \_\_\_\_\_

**10. Geographical Data**

Acreage of property \_\_\_\_\_

**UTM References**

A 

|  |  |  |  |  |  |  |  |  |  |  |  |
|--|--|--|--|--|--|--|--|--|--|--|--|
|  |  |  |  |  |  |  |  |  |  |  |  |
|--|--|--|--|--|--|--|--|--|--|--|--|

|  |  |  |  |  |  |  |  |  |  |  |  |
|--|--|--|--|--|--|--|--|--|--|--|--|
|  |  |  |  |  |  |  |  |  |  |  |  |
|--|--|--|--|--|--|--|--|--|--|--|--|

Zone    Easting    Northing

B 

|  |  |  |  |  |  |  |  |  |  |  |  |
|--|--|--|--|--|--|--|--|--|--|--|--|
|  |  |  |  |  |  |  |  |  |  |  |  |
|--|--|--|--|--|--|--|--|--|--|--|--|

|  |  |  |  |  |  |  |  |  |  |  |  |
|--|--|--|--|--|--|--|--|--|--|--|--|
|  |  |  |  |  |  |  |  |  |  |  |  |
|--|--|--|--|--|--|--|--|--|--|--|--|

Zone    Easting    Northing

C 

|  |  |  |  |  |  |  |  |  |  |  |  |
|--|--|--|--|--|--|--|--|--|--|--|--|
|  |  |  |  |  |  |  |  |  |  |  |  |
|--|--|--|--|--|--|--|--|--|--|--|--|

D 

|  |  |  |  |  |  |  |  |  |  |  |  |
|--|--|--|--|--|--|--|--|--|--|--|--|
|  |  |  |  |  |  |  |  |  |  |  |  |
|--|--|--|--|--|--|--|--|--|--|--|--|

See continuation sheet

**Verbal Boundary Description**

See continuation sheet

**Boundary Justification**

See continuation sheet

**11. Form Prepared By**

name/title Kenneth Story, National Register Coordinator  
organization Arkansas Historic Preservation Program date 2 April, 1990  
street & number 225 E Markham, Suite 300 telephone 501-371-2763  
city or town Little Rock state Arkansas zip code 72201

United States Department of the Interior  
National Park Service

**National Register of Historic Places  
Continuation Sheet**

Section number 7 Page 1

---

Description

The Fox Motel House is a one-and-one-half story, wood frame Craftsman residence. The side gable house block with its shed roof porch and rear gable roof ell constitutes a somewhat rambling plan. One square exterior brick chimney is attached to the south side of the house, just to the west of the front porch. The roof material is composition shingle, the walls are sheathed in weatherboarding, and the structure rests upon a continuous, concrete block foundation.

The eastern or front elevation is composed of a brick and wood porch surmounted by a low, spreading doghouse dormer. The dormer is lighted with two nine-pane fixed windows and decorated with triangular knee braces and exposed rafters. The wall beneath the porch is fenestrated with four symmetrically-placed nine-over-one wood sash windows flanking a central nine-pane entrance door. The porch features exposed cornice rafters and a curved box cornice which spans the length of the porch between the two brick corner piers. The cornice on the sides of the porch is arched. A brick, solid balustrade connects the piers with the wall and extends toward the porch stairway and low stoops.

The northern and southern elevations are similar in composition, the only exception being the gabled projecting bay toward the western end of the northern elevation. Otherwise both elevations are fenestrated with a variety of nine-over-one wood sash windows and entrances. The cornices are ornamented with knee braces and exposed rafters here also.

The western elevation features one window in the rear of the first rear gable roof ell and a sliding wood door in the rear of the second rear gable roof ell.

The Fox Motel House has suffered only the replacement of a few original windows; otherwise it is virtually unaltered. It is unoccupied and in fair condition.

United States Department of the Interior  
National Park Service

**National Register of Historic Places  
Continuation Sheet**

Section number   8   Page   1  

---

Significance

Criterion C, local significance

The Fox Motel House (Part E, Historic Context #4) is the best example in Bald Knob of a single story, wood frame, side-gable entry, Craftsman style residence. It reveals the more traditional Craftsman floor plan with a distinct, shed roof porch which projects from the side of the side gable plan. Though simply detailed, the Fox Motel House combines the low, spreading qualities of true Craftsman design with the "honest" expression of structural elements and restrained use of decoration to create a design that is both identifiably Craftsman in inspiration and aesthetically successful.

United States Department of the Interior  
National Park Service

## National Register of Historic Places Continuation Sheet

Section number 10 Page 1

---

Acreage of property: Less than one

UTM References

A 15/630420/3908620

Verbal Boundary Description:

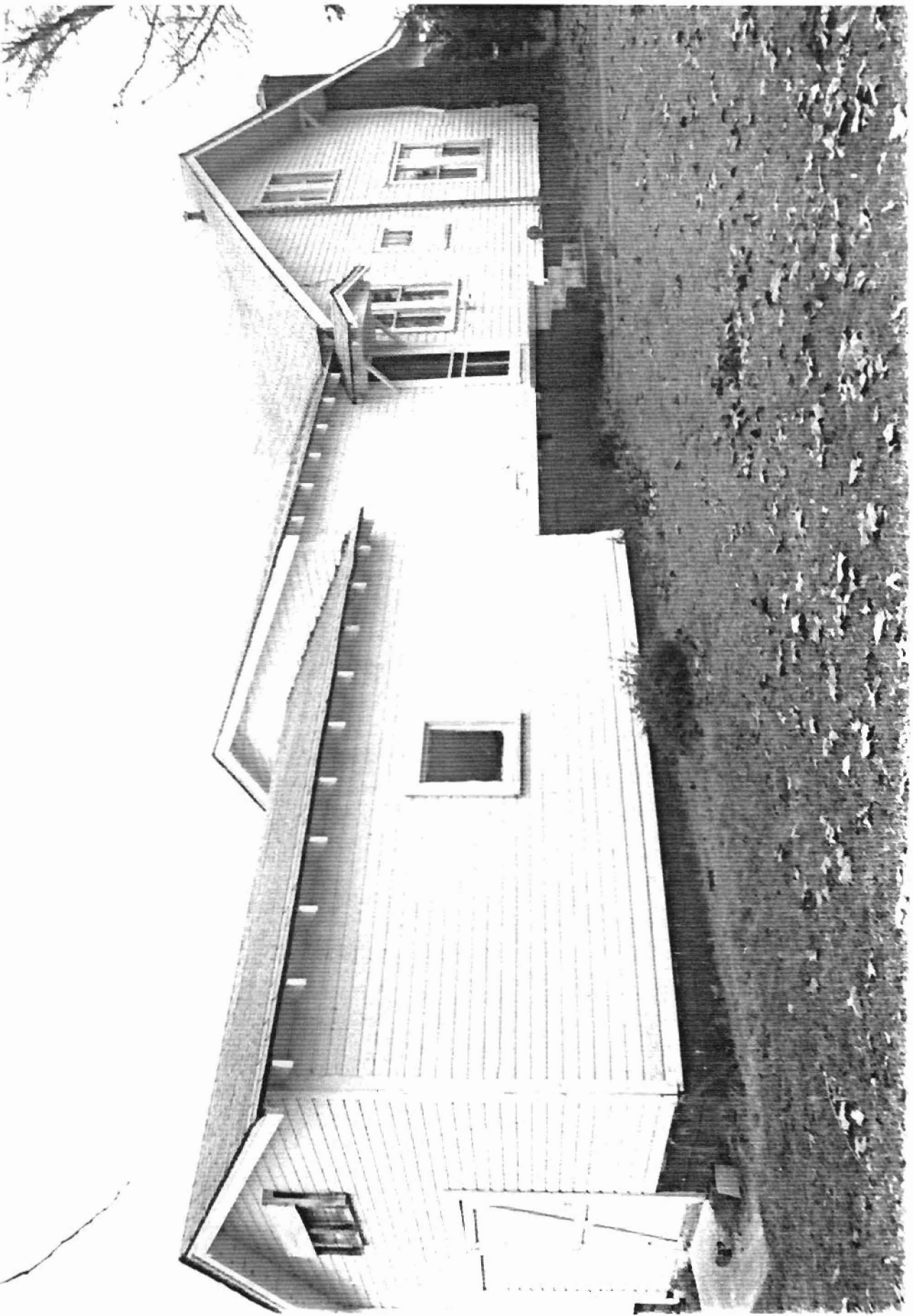
Beginning at a point formed by the intersection of the northwestern edge of State Highway 367 with a perpendicular line running parallel to the northeastern elevation of the house and located 50 feet to the northeast thereof, proceed northwesterly along said line for a distance of approximately 200 feet to a point formed by its intersection with a perpendicular line running parallel to the northwestern elevation of the house; thence proceed southwesterly for a distance of approximately 200 feet along said line to a point formed by its intersection with a perpendicular line running parallel to the southwestern elevation; thence proceed southeasterly along said line for a distance of approximately 200 feet to a point formed by its intersection with a perpendicular line running along the northwestern edge of State Highway 367; thence proceed northeasterly for a distance of approximately 200 feet along said line to the point of beginning.

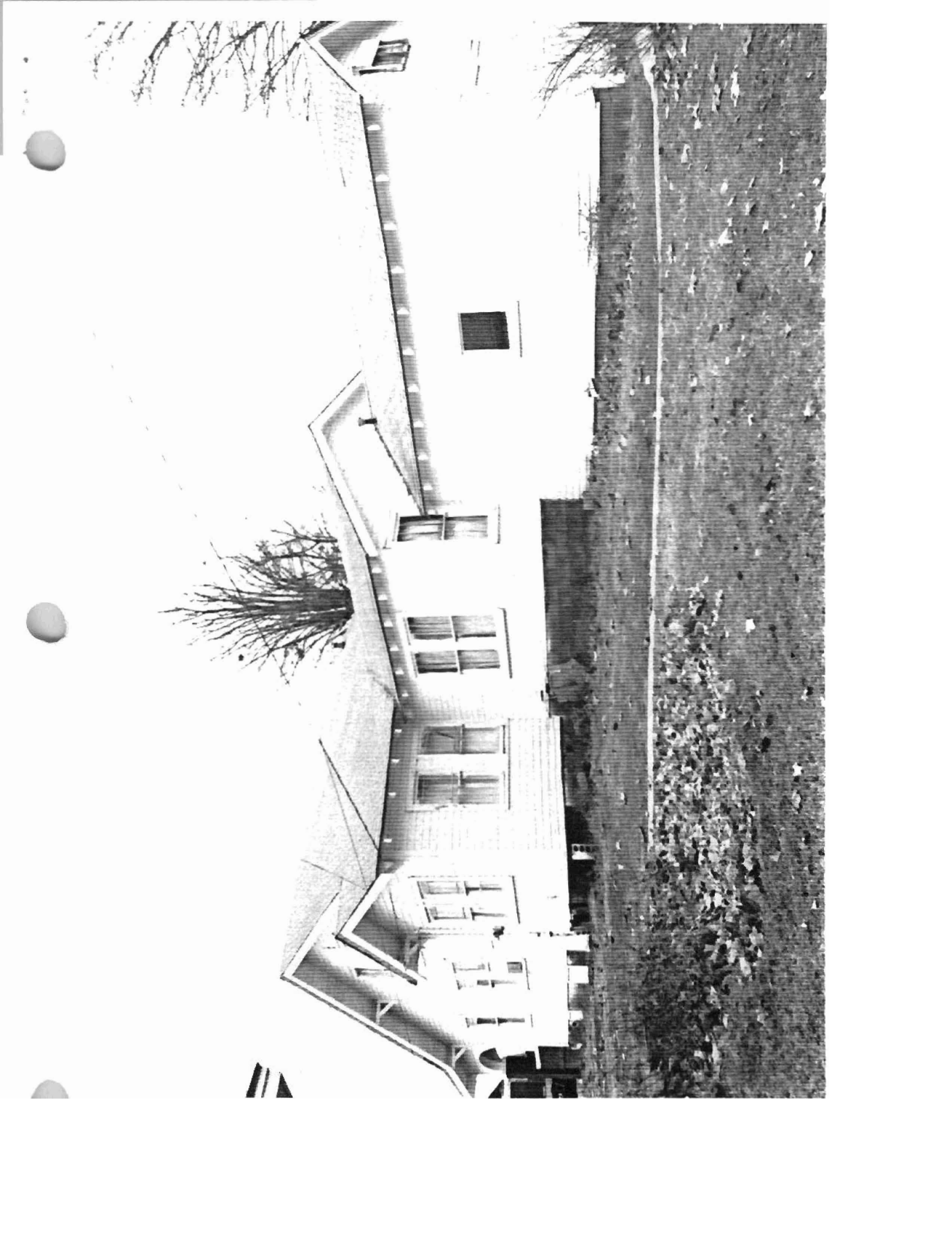
Boundary Justification:

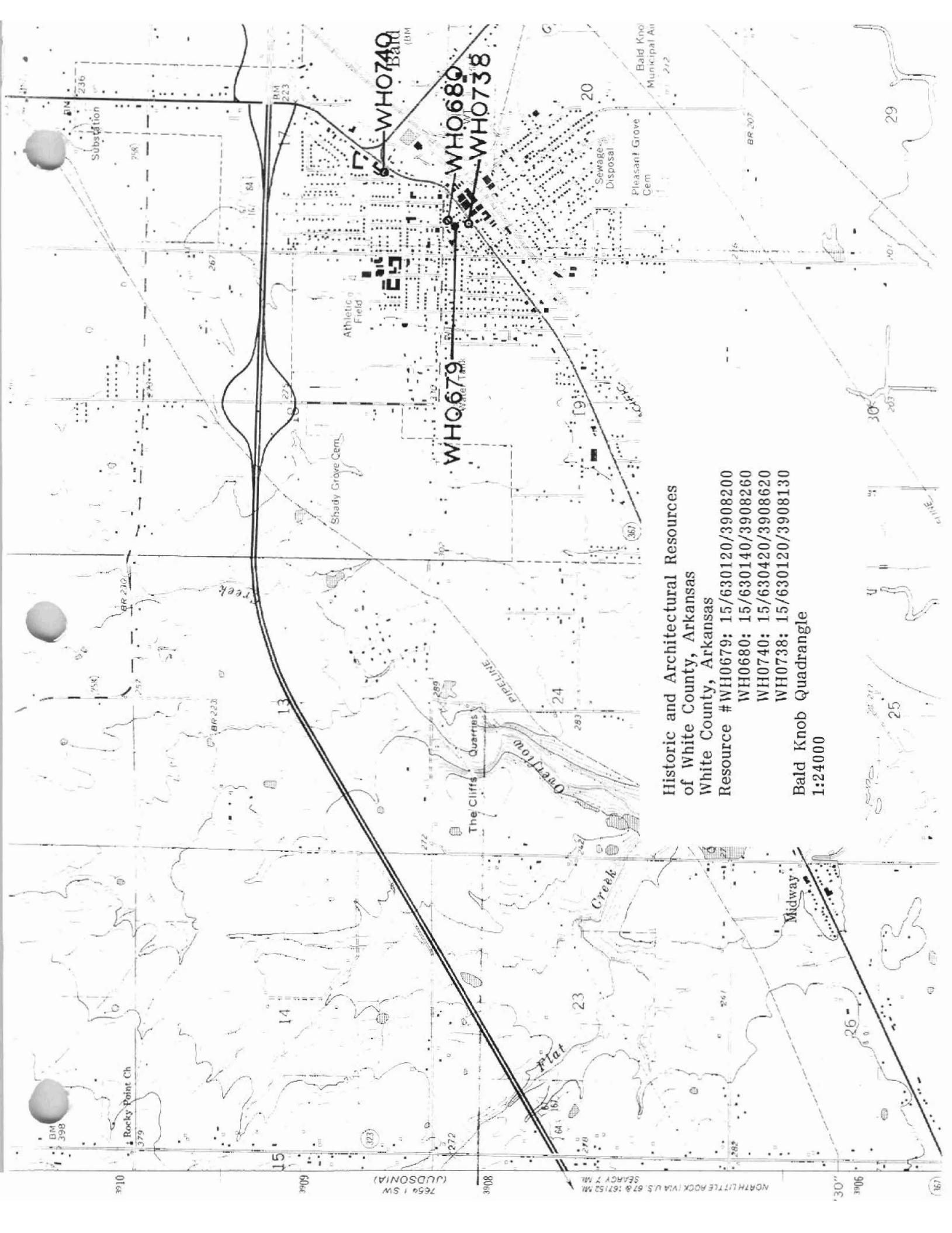
The original lot has been subdivided during the non-historic period, resulting in an indefinite current lot boundary; therefore, this boundary includes all the property historically associated with this resource that retains its integrity.











**Historic and Architectural Resources**

**of White County, Arkansas**

**White County, Arkansas**

**Resource #WH0679; 15/630120/3908200**

**WH0680; 15/630140/3908260**

**WH0740; 15/630420/3908620**

**WH0738; 15/630120/3908130**

**Bald Knob Quadrangle**

**1:24000**