

NR listed 7/21/92

United States Department of the Interior
National Park Service

National Register of Historic Places Registration Form

This form is for use in nominating or requesting determinations of eligibility for individual properties or districts. See instructions in *Guidelines for Completing National Register Forms* (National Register Bulletin 16). Complete each item by marking "x" in the appropriate box or by entering the requested information. If an item does not apply to the property being documented, enter "N/A" for "not applicable." For functions, styles, materials, and areas of significance, enter only the categories and subcategories listed in the instructions. For additional space use continuation sheets (Form 10-900a). Type all entries.

1. Name of Property

historic name Hilger, Louis N.; Homestead; Livestock Barn
other names/site number WH0604

2. Location

street & number County Road 374 not for publication NA
city, town Providence vicinity
state Arkansas code AR county White code AR 145 zip code 72081

3. Classification

Ownership of Property

- private
- public-local
- public-State
- public-Federal

Category of Property

- building(s)
- district
- site
- structure
- object

Number of Resources within Property

Contributing	Noncontributing
<u>1</u>	<u> </u> buildings
<u> </u>	<u> </u> sites
<u> </u>	<u> </u> structures
<u> </u>	<u> </u> objects
<u>1</u>	<u>0</u> Total

name of related multiple property listing:
historic and architectural resources
of White County, Arkansas

Number of contributing resources previously
listed in the National Register NA

4. State/Federal Agency Certification

As the designated authority under the National Historic Preservation Act of 1966, as amended, I hereby certify that this nomination request for determination of eligibility meets the documentation standards for registering properties in the National Register of Historic Places and meets the procedural and professional requirements set forth in 36 CFR Part 60. In my opinion, the property meets does not meet the National Register criteria. See continuation sheet.

Cathryn A. Buford
Signature of certifying official

5-9-91
Date

Arkansas Historic Preservation Program
State or Federal agency and bureau

In my opinion, the property meets does not meet the National Register criteria. See continuation sheet.

Signature of commenting or other official

Date

State or Federal agency and bureau

5. National Park Service Certification

I, hereby, certify that this property is:

- entered in the National Register.
 See continuation sheet.
- determined eligible for the National Register. See continuation sheet.
- determined not eligible for the National Register.
- removed from the National Register.
- other, (explain:)

Signature of the Keeper

Date of Action

6. Function or Use

Historic Functions (enter categories from instructions)

Agriculture/Subsistence/
Animal Facility/Storage

Current Functions (enter categories from instructions)

Agriculture/Subsistence/
Animal Facility/Storage

7. Description

Architectural Classification
(enter categories from instructions)

Other: Transverse Crib Barn

Materials (enter categories from instructions)

foundation Concrete
walls Wood/Board and Batten
roof Metal
other _____

Describe present and historic physical appearance.

8. Statement of Significance

Certifying official has considered the significance of this property in relation to other properties:

nationally statewide locally

Applicable National Register Criteria A - B C D

Criteria Considerations (Exceptions) A B C D E F G

Areas of Significance (enter categories from instructions)

Architecture

Period of Significance

1939

Significant Dates

NA

Cultural Affiliation

NA

Significant Person

NA

Architect/Builder

Unknown

State significance of property, and justify criteria, criteria considerations, and areas and periods of significance noted above.

See continuation sheet

9. Major Bibliographical References

Previous documentation on file (NPS):

- preliminary determination of individual listing (36 CFR 67) has been requested
- previously listed in the National Register
- previously determined eligible by the National Register
- designated a National Historic Landmark
- recorded by Historic American Buildings Survey # _____
- recorded by Historic American Engineering Record # _____

See continuation sheet

Primary location of additional data:

- State historic preservation office
- Other State agency
- Federal agency
- Local government
- University
- Other

Specify repository: _____

10. Geographical Data

Acres of property _____

UTM References

A
Zone Easting Northing

B
Zone Easting Northing

C

D

See continuation sheet

Verbal Boundary Description

See continuation sheet

Boundary Justification

See continuation sheet

11. Form Prepared By

name/title Ken Story, National Register Coordinator
organization Arkansas Historic Preservation Program date February 13, 1991
street & number 225 East Markham, Suite 300 telephone (501) 324-9346
city or town Little Rock state Arkansas zip code 72201

**United States Department of the Interior
National Park Service**

**National Register of Historic Places
Continuation Sheet**

Section number 7 Page 1

The livestock/equipment barn at the Louis N. Hilger Homestead is a two-story, wood frame, livestock/feed/equipment agricultural building. Its plan is transverse-crib with a side livestock stall shed. Its board-and-batten walls rest upon a continuous concrete foundation and a metal gambrel roof shelters the structure.

The northern or main elevation is accessed only via a large, central vehicular entry with a projecting hay hood above. The eastern elevation is lighted by two shed dormers projecting from the roof and three smaller, rectangular windows placed randomly in the shed wall below. The elevation is accessed via nine livestock doors that lead into the stalls behind. The southern elevation is blank with the exception of the central vehicular entrance, and the western elevation is lighted with two shed dormers and six square windows placed symmetrically in the wall below.

The interior of the barn is divided into five square stalls on each side of the central runway in the gambrel roof section and seven stalls in the eastern shed section. A large, open hay loft occupies the entire second story.

**United States Department of the Interior
National Park Service**

National Register of Historic Places Continuation Sheet

Section number 8 Page 1

Significance

Criterion C, local significance

The livestock/equipment barn at the Louis N. Hilger Homestead is the best example in the county from this era of White County history (Boom and Bust: The War and Depression Years, 1914-1939; Section E,4) of a barn of this size and floor plan from the late 1930's. Its remarkable braced frame construction (consisting as it does of 4"-square beams for the walls and 2"x4" planks for the roof framing) allows for its extraordinary height. It is also one of the few barns of any type in the county to use dormers in lighting the hay loft.

The barn was constructed in 1939 to shelter the mules that Louis Hilger used as draught animals for his dairy business. It survives in excellent condition.

United States Department of the Interior
National Park Service

National Register of Historic Places Continuation Sheet

Section number 9 Page 1

See "Historic and Architectural Resources of White County, Arkansas," Section H.

United States Department of the Interior
National Park Service

National Register of Historic Places Continuation Sheet

Section number 10 Page 1

Acreage of property: Less than one

UTM References:

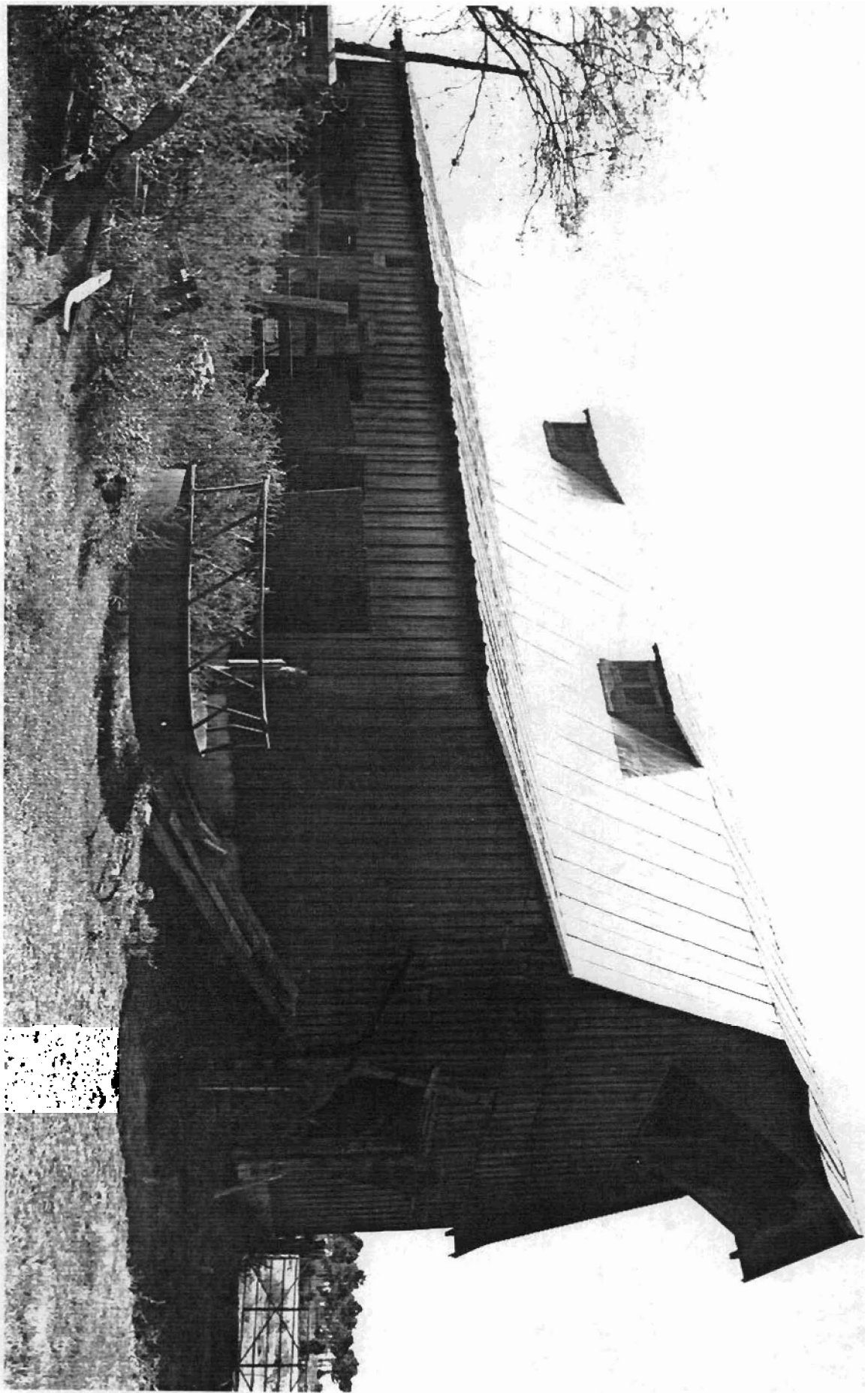
A 15/618820/3914660

Verbal Boundary Description:

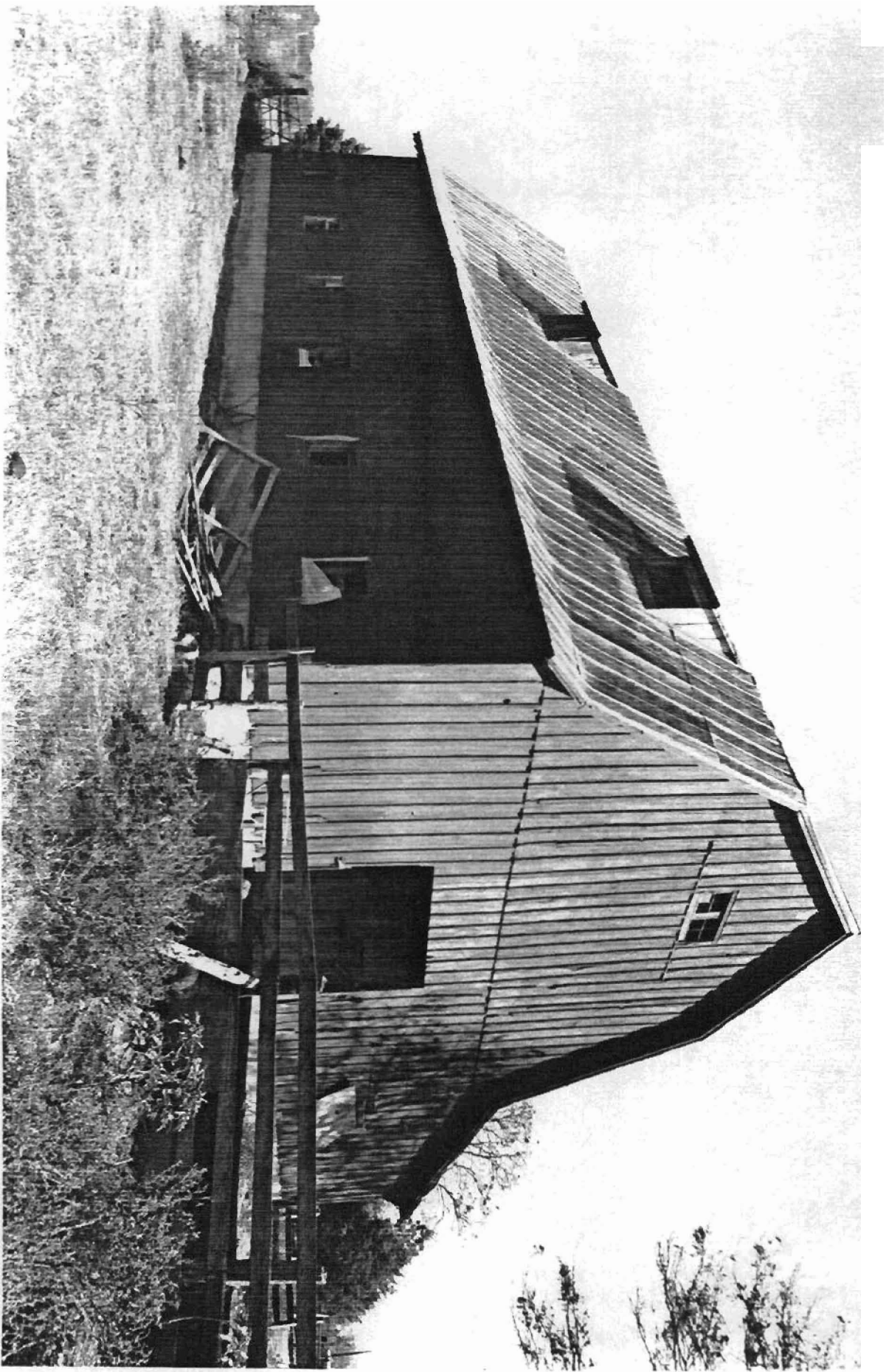
Beginning at the point formed by the intersection of a line running parallel to the northern elevation of the barn and located 25 feet to the north thereof with a perpendicular line running parallel to the western elevation of the barn and located 25 feet to the west thereof, proceed southerly along the latter line for a distance of approximately 200 feet to the point formed by its intersection with a perpendicular line running parallel to the southern elevation of the barn; thence proceed easterly along said line for a distance of approximately 200 feet to a point formed by its intersection with a perpendicular line running parallel to the eastern elevation of the barn; thence proceed northerly for a distance of approximately 200 feet along said line to a point formed by its intersection with a perpendicular line running parallel to the northern elevation of the barn; thence proceed westerly for a distance of approximately 200 feet along said line to the point of beginning.

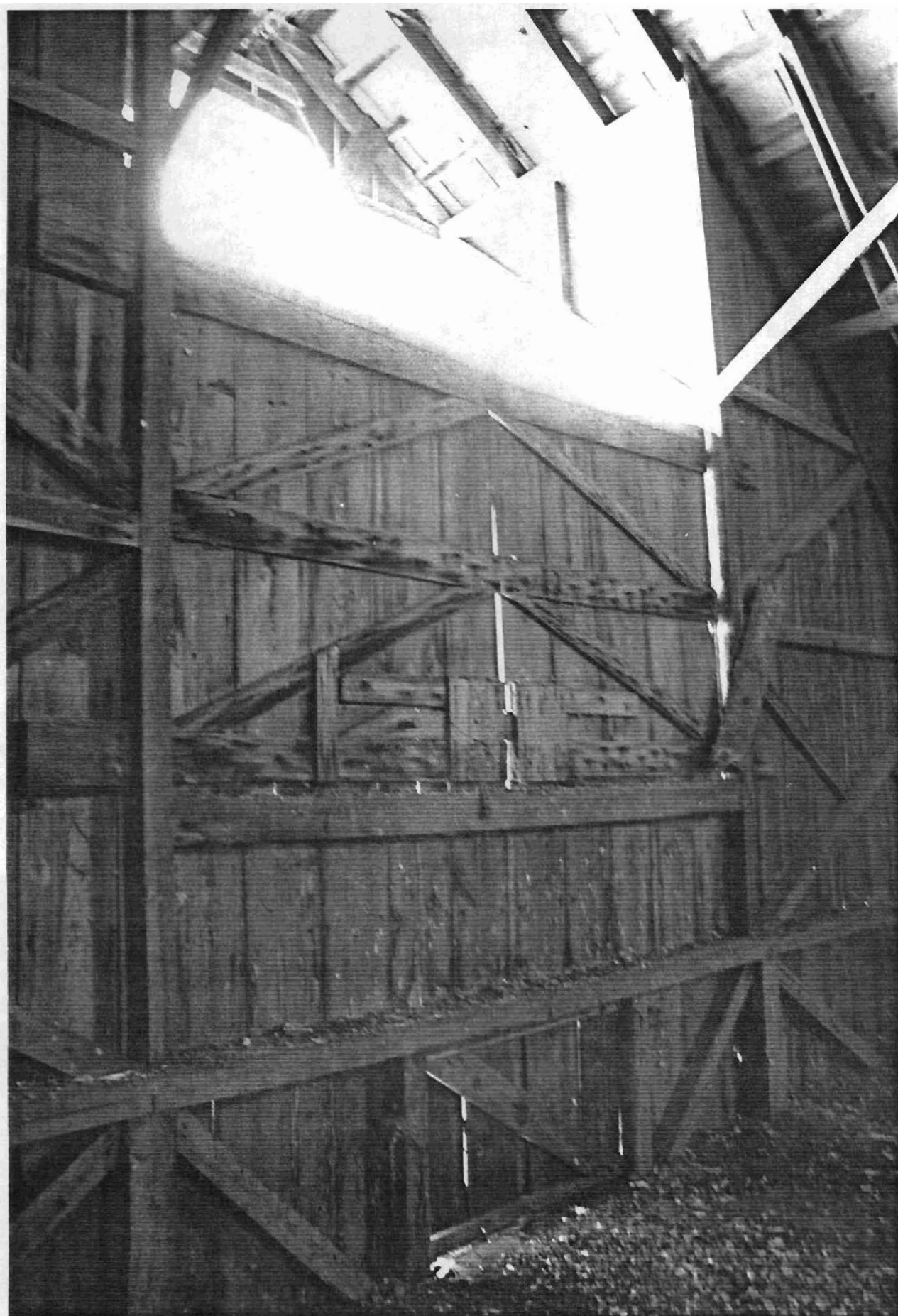
Boundary Justification:

This resource was constructed as part of a larger farmstead that has lost its integrity as such; thus, this boundary includes all the property known to be historically associated with this resource.





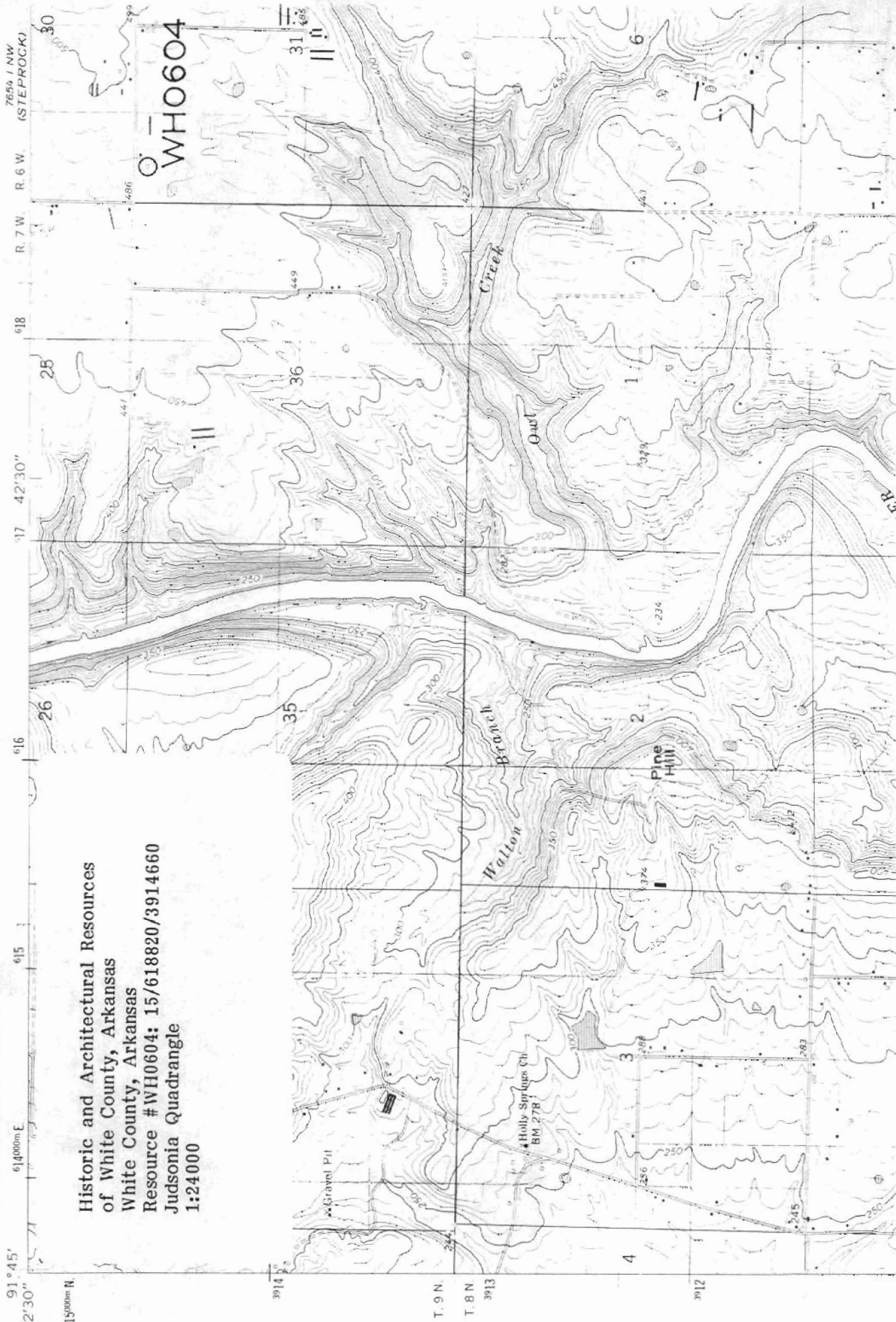




WH0604 15/615990/3001410

UNITED STATES
DEPARTMENT OF THE INTERIOR
GEOLOGICAL SURVEY

Historic and Architectural Resources
of White County, Arkansas
White County, Arkansas
Resource #WH0604: 15/618820/3914660
Judsonia Quadrangle
1:24000



7654 IV NE
(PANGBURN)