

LISTED 09/13/91

United States Department of the Interior National Park Service

National Register of Historic Places Registration Form

This form is for use in nominating or requesting determinations of eligibility for individual properties or districts. See instructions in Guidelines for Completing National Register Forms (National Register Bulletin 16). Complete each item by marking "x" in the appropriate box or by entering the requested information. If an item does not apply to the property being documented, enter "N/A" for "not applicable." For functions, styles, materials, and areas of significance, enter only the categories and subcategories listed in the instructions. For additional space use continuation sheets (Form 10-900a). Type all entries.

1. Name of Property

historic name Stanley Simpson Farmstead; Picking Sled other names/alte number WH0145

2. Location

street & number County Road 190 not for publication NA city, town Providence vicinity NA state Arkansas code AR county White code AR145 zip code 72081

3. Classification

Ownership of Property: private (checked), public-local, public-State, public-Federal. Category of Property: building(s), district, site, structure (checked), object. Number of Resources within Property: Contributing 1, Noncontributing 0, Total 1. Name of related multiple property listing: historic and architectural resources of White County, Arkansas. Number of contributing resources previously listed in the National Register: NA

4. State/Federal Agency Certification

As the designated authority under the National Historic Preservation Act of 1966, as amended, I hereby certify that this nomination request for determination of eligibility meets the documentation standards for registering properties in the National Register of Historic Places and meets the procedural and professional requirements set forth in 36 CFR Part 60. In my opinion, the property meets does not meet the National Register criteria. See continuation sheet. Signature of certifying official: Catherine A. Byford, Date: 5-9-91, Arkansas Historic Preservation Program

In my opinion, the property meets does not meet the National Register criteria. See continuation sheet. Signature of commenting or other official: Date: State or Federal agency and bureau

5. National Park Service Certification

I, hereby, certify that this property is: entered in the National Register. See continuation sheet. determined eligible for the National Register. See continuation sheet. determined not eligible for the National Register. removed from the National Register. other, (explain:). Signature of the Keeper Date of Action

6. Function or Use

Historic Functions (enter categories from instructions)

Agriculture/Subsistence/Storage

Current Functions (enter categories from instructions)

Vacant/ Not in use

7. Description

Architectural Classification

(enter categories from instructions)

Materials (enter categories from instructions)

Other: Mobile Strawberry Picking Shed

foundation Wood

walls Wood

roof Metal

other _____

Describe present and historic physical appearance.

9. Major Bibliographical References

See continuation sheet

Previous documentation on file (NPS):

- preliminary determination of individual listing (36 CFR 67) has been requested
- previously listed in the National Register
- previously determined eligible by the National Register
- designated a National Historic Landmark
- recorded by Historic American Buildings Survey # _____
- recorded by Historic American Engineering Record # _____

Primary location of additional data:

- State historic preservation office
- Other State agency
- Federal agency
- Local government
- University
- Other

Specify repository: _____

10. Geographical Data

Acreage of property _____

UTM References

A
 Zone Easting Northing

B
 Zone Easting Northing

C

D

See continuation sheet

Verbal Boundary Description

See continuation sheet

Boundary Justification

See continuation sheet

11. Form Prepared By

name/title Ken Story, Architectural Historian
 organization Arkansas Historic Preservation Program date February 20, 1991
 street & number 225 East Markham, Suite 300 telephone (501) 324-9346
 city or town Little Rock, state Arkansas zip code 72201

9. Major Bibliographical References

Previous documentation on file (NPS):

- preliminary determination of individual listing (36 CFR 67) has been requested
- previously listed in the National Register
- previously determined eligible by the National Register
- designated a National Historic Landmark
- recorded by Historic American Buildings Survey # _____
- recorded by Historic American Engineering Record # _____

See continuation sheet

Primary location of additional data:

- State historic preservation office
- Other State agency
- Federal agency
- Local government
- University
- Other

Specify repository: _____

10. Geographical Data

Acreage of property _____

UTM References

A

Zone	Easting	Northing

B

Zone	Easting	Northing

C

--	--	--

D

--	--	--

See continuation sheet

Verbal Boundary Description

See continuation sheet

Boundary Justification

See continuation sheet

11. Form Prepared By

name/title Ken Story, Architectural Historian
organization Arkansas Historic Preservation Program date February 20, 1991
street & number 225 East Markham, Suite 300 telephone (501) 324-9346
city or town Little Rock, state Arkansas zip code 72201

United States Department of the Interior
National Park Service

National Register of Historic Places

Continuation Sheet

Section number 7 Page 1

The Picking Sled at the Stanley Simpson Farmstead is a single story, braced wood frame strawberry picking and storage structure. It is rectangular in plan. Its metal gable roof and combination board-and-batten/weatherboard walls are supported on a foundation composed of long, wood runners.

Its southern and northern elevations are each accessed by a single-leaf hinged door. Its eastern elevation is blank and its western elevation features large plank inserts that could be removed to allow for berries to be loaded during the picking process and then replaced to prevent spillage as the sled became full.

**United States Department of the Interior
National Park Service**

National Register of Historic Places Continuation Sheet

Section number 8 Page 1

Significance

Criteria A and C, local significance

The Picking Sled at the Stanley Simpson Farmstead is significant from this era of White County history (Boom and Bust: The War and Depression Years, 1914-1939; Section E,4) as the only surviving example in White County of a mobile wood strawberry storage structure that was pulled by horse or mule around the fields during harvest time for the purpose of harvesting strawberries. Toward that end it was outfitted with wood runners for easier motion. It is therefore significant both as an extant structure whose use was directly associated with the strawberry industry in White County and as an example of the ability of local builders to adapt common vernacular construction techniques in response to occupational requirements.

**United States Department of the Interior
National Park Service**

**National Register of Historic Places
Continuation Sheet**

Section number 9 Page 1

See "Historic and Architectural Resources of White County, Arkansas," Section H.

**United States Department of the Interior
National Park Service**

**National Register of Historic Places
Continuation Sheet**

Section number 10 Page 1

Acreage of property: Less than one

UTM References:

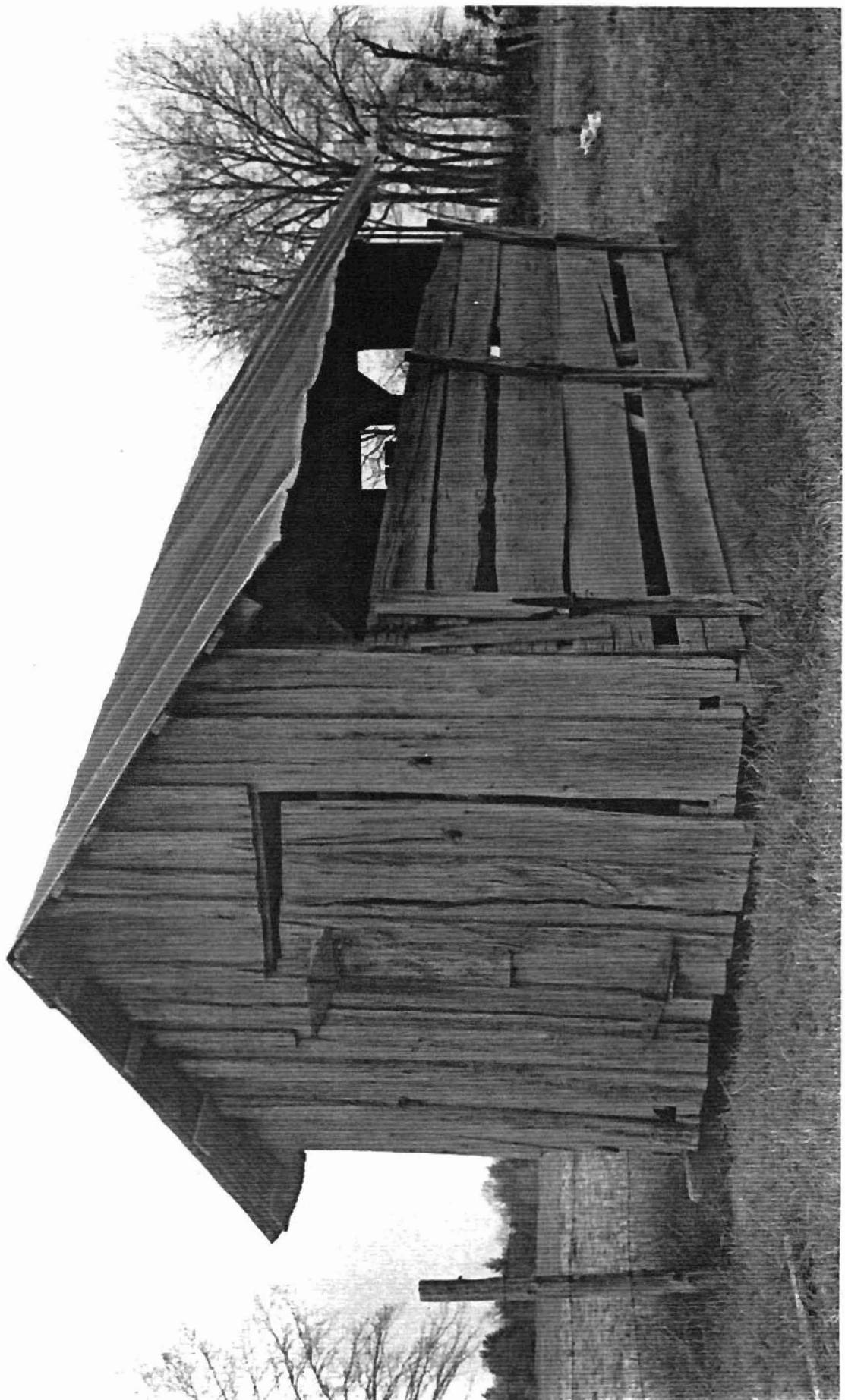
A 15/618975/3915650

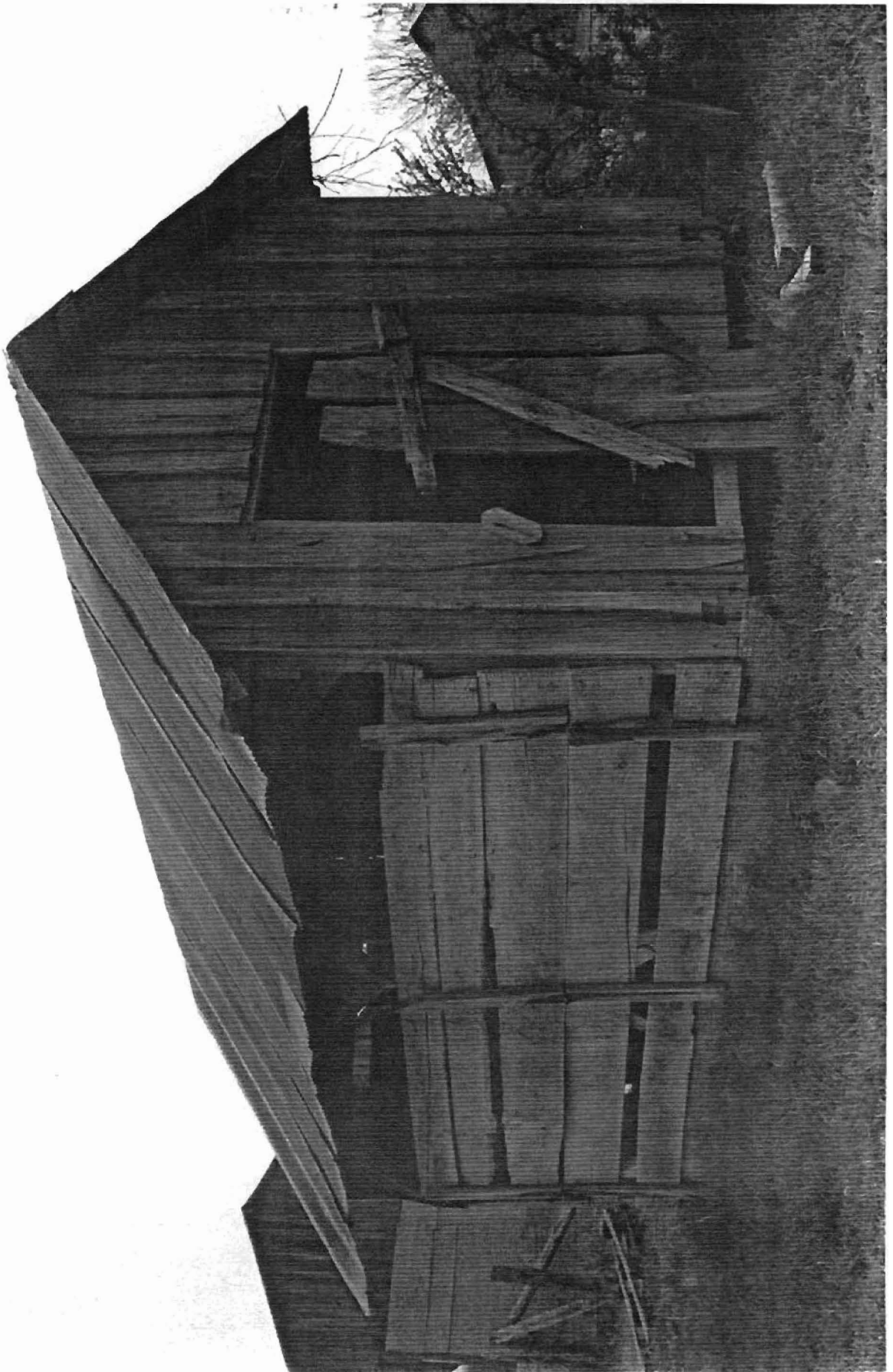
Verbal Boundary Description:

Beginning at a point formed by the intersection of a line running along the southern elevation of the picking sled with a perpendicular line running along the eastern elevation of the sled (located 250 feet due north of the northern edge of County Road 390 and 1,000 feet east of the eastern edge of County Road 388), proceed northerly along latter line to a point formed by its intersection with a perpendicular line running along the northern elevation of the sled; thence proceed westerly along said line to a point formed by its intersection with a perpendicular line running along the western elevation of the sled; thence proceed southerly along said line to a point formed by its intersection with a perpendicular line running along the southern elevation of the sled; thence proceed easterly to the point of beginning.

Boundary Justification:

This boundary includes all the property historically associated with this resource.





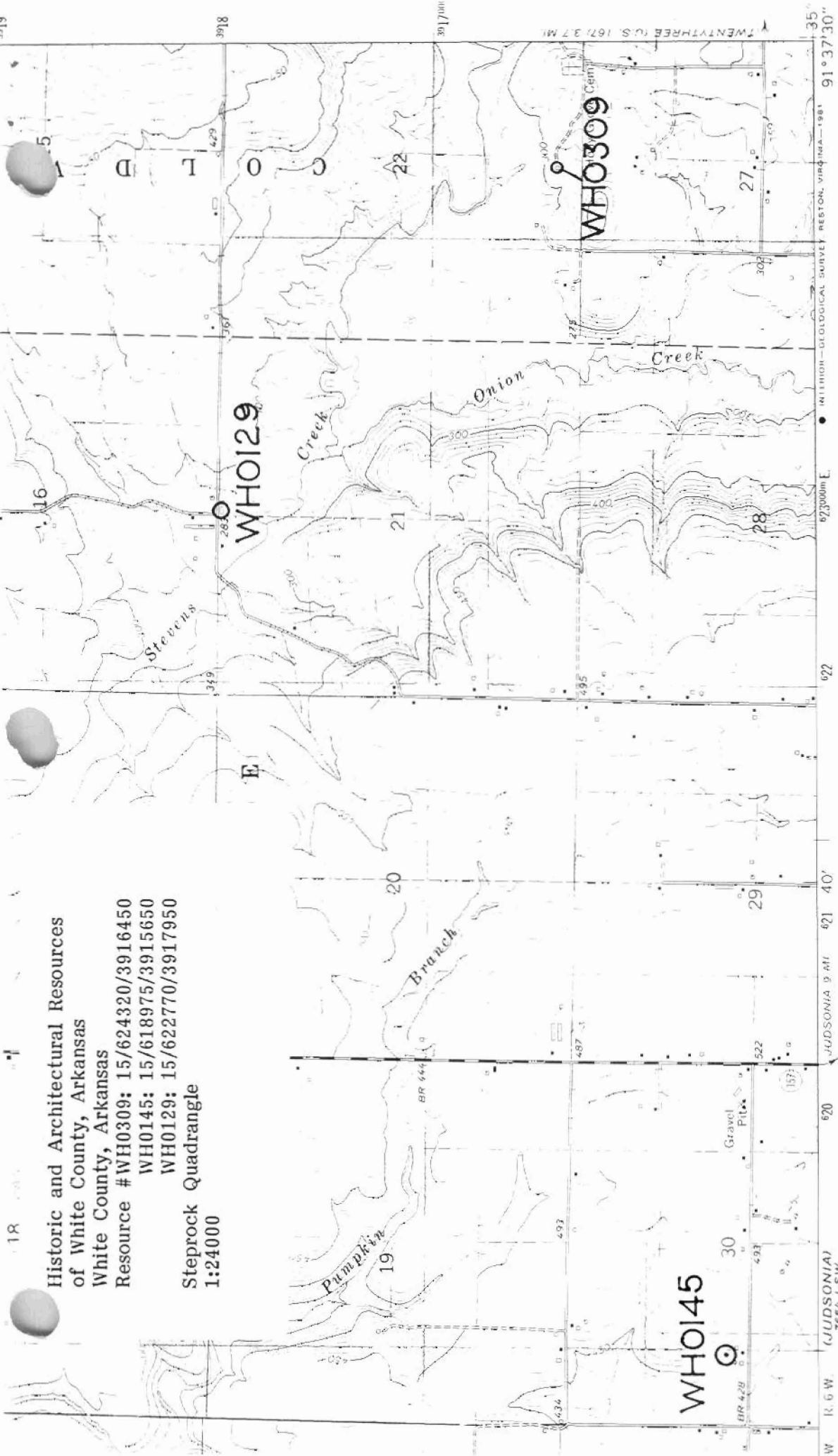


3919

18

Historic and Architectural Resources
 of White County, Arkansas
 White County, Arkansas
 Resource # WH0309: 15/624320/3916450
 WH0145: 15/618975/3915650
 WH0129: 15/622770/3917950

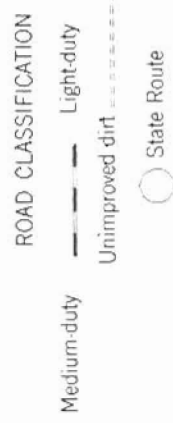
Steprock Quadrangle
 1:24000



SCALE 1:24 000



CONTOUR INTERVAL 10 FEET
 NATIONAL GEODETIC VERTICAL DATUM OF 1929



QUADRANGLE LOCATION

STEPROCK, ARK.

N3522.5—W9137.5/7.5

1965

COMPLIES WITH NATIONAL MAP ACCURACY STANDARDS
 FEDERAL SURVEY, DENVER, COLORADO 80225, OR RESTON, VIRGINIA 22092
 GEOLOGICAL COMMISSION, LITTLE ROCK, ARKANSAS 72204
 FOR MORE INFORMATION ON REQUESTING TOPOGRAPHIC MAPS AND SYMBOLS IS AVAILABLE ON REQUEST