

NR Listed 5/26/95

United States Department of the Interior
National Park Service

NATIONAL REGISTER OF HISTORIC PLACES
REGISTRATION FORM

=====

1. Name of Property

=====

historic name: Maple Street Overpass

other name/site number: N/A

=====

2. Location

=====

street & number: Maple Street at its crossing of the Frisco Railroad

not for publication: N/A

city/town: Fayetteville

vicinity: N/A

state: AR county: Washington code: AR 143 zip code: 72701

=====

3. Classification

=====

Ownership of Property: Public-local

Category of Property: Structure

Number of Resources within Property:

Contributing	Noncontributing	
_____	_____	buildings
_____	_____	sites
_____	_____	structures
_____	_____	objects
_____	_____	Total

Number of contributing resources previously listed in the National Register: N/A

Name of related multiple property listing: Historic Bridges of Arkansas

=====
4. State/Federal Agency Certification
=====

As the designated authority under the National Historic Preservation Act of 1986, as amended, I hereby certify that this X nomination _____ request for determination of eligibility meets the documentation standards for registering properties in the National Register of Historic Places and meets the procedural and professional requirements set forth in 36 CFR Part 60. In my opinion, the property X meets _____ does not meet the National Register Criteria. _____ See continuation sheet.

Carolyn A. Slater _____ 4-11-95
Signature of certifying official Date

Arkansas Historic Preservation Program
State or Federal agency and bureau

In my opinion, the property _____ meets _____ does not meet the National Register criteria. _____ See continuation sheet.

Signature of commenting or other official Date

State or Federal agency and bureau

=====
5. National Park Service Certification
=====

I, hereby certify that this property is:

- _____ entered in the National Register _____
_____ See continuation sheet.
- _____ determined eligible for the National Register _____
_____ See continuation sheet.
- _____ determined not eligible for the National Register _____
- _____ removed from the National Register _____
- _____ other (explain): _____

Signature of Keeper Date of Action

=====
6. Function or Use
=====

Historic: TRANSPORTATION Sub: Road-related

Current: TRANSPORTATION Sub: Road-related

=====
9. Major Bibliographical References
=====

See "Historic Bridges of Arkansas" MPS Nomination, Section H.

___ See continuation sheet.

Previous documentation on file (NPS):

- preliminary determination of individual listing (36 CFR 67) has been requested.
- previously listed in the National Register
- previously determined eligible by the National Register
- designated a National Historic Landmark
- recorded by Historic American Buildings Survey # _____
- recorded by Historic American Engineering Record # _____

Primary Location of Additional Data:

- X State historic preservation office
- Other state agency
- Federal agency
- Local government
- University
- Other -- Specify Repository: _____

=====
10. Geographical Data
=====

Acreage of Property: Less than one

Table with 5 columns: UTM References, Zone, Easting, Northing, Zone, Easting, Northing. Rows A, B, C, D with values like 15, 394940, 3992140.

___ See continuation sheet.

Verbal Boundary Description: ___ See continuation sheet.

Beginning at a point formed by the intersection of the northern edge of Maple Street with a perpendicular line running parallel with the western end of the bridge and located approximately 25 feet to the west thereof, proceed northerly for a distance of approximately 25 feet to its intersection with a perpendicular line running parallel with the bridge's northern side; thence proceed easterly along said line for a distance of approximately 110 feet to its intersection with a perpendicular line; thence proceed southerly along said line for a distance of approximately 75 feet to its intersection with a perpendicular line; thence proceed westerly along said line for a distance of approximately 110 feet to its intersection with a perpendicular line; thence proceed northerly to the point of beginning.

Boundary Justification: ___ See continuation sheet.

This boundary includes all the property historically associated with this resource.

=====
11. Form Prepared By
=====

Name/Title: Ken Story, National Register/Survey Coordinator
Organization: Arkansas Historic Preservation Program Date: 04/04/95
Street & Number: 323 Center Street, Suite 1500 Telephone: (501) 324-9880
City or Town: Little Rock State: AR Zip: 72201

United States Department of the Interior
National Park Service

National Register of Historic Places Continuation Sheet

Section number 7 Page 1

Description

Located on Maple Street at the point where it crosses the Frisco Railroad line, the Maple Street Overpass is of reinforced concrete construction and consists of a single deck span supported by an arched substructure that transfers the load to the approach abutments. It is approximately 60 feet in length and 25 feet in width at its widest point. Its abutment and pier material is reinforced concrete, and its deck material is asphalt laid over reinforced concrete. A decorative Art Deco-style balustrade with original inset lighting fixtures borders the pedestrian sidewalk on either side of the deck.

United States Department of the Interior
National Park Service

National Register of Historic Places Continuation Sheet

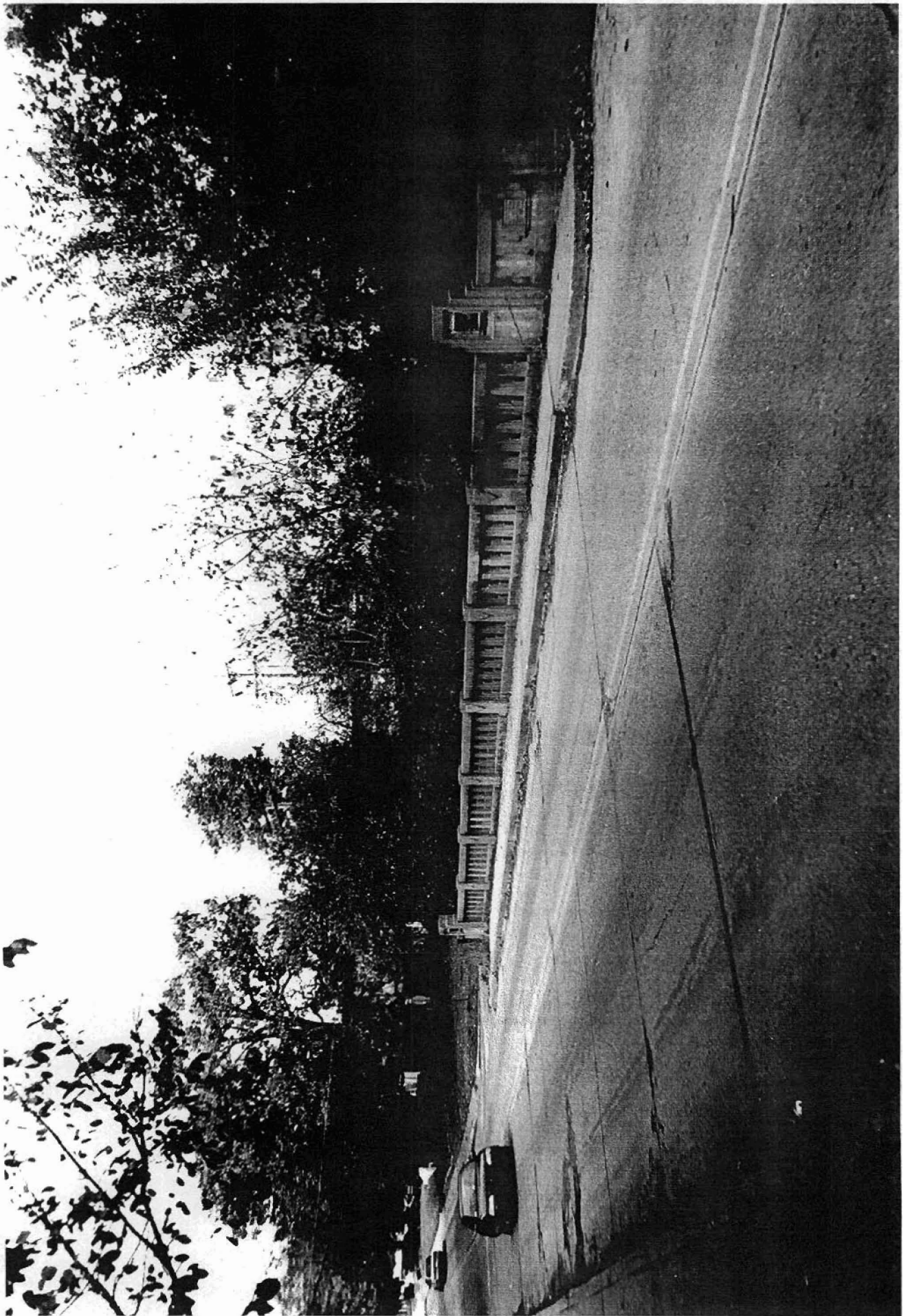
Section number 8 Page 1

Significance

Constructed in 1936, the Maple Street Overpass is associated with the *Arkansas Highway and Transportation Era* historic context and is of the open masonry substructure type. Constructed under the authority of the St. Louis-San Francisco Railroad, the Arkansas State Highway Commission and the United States Bureau of Public Roads, it was designed by Frederick Lutt Johann, the well-known bridge designer who did an assortment of other work in Arkansas. Given its intact condition it retains sufficient integrity to remain associated with its historic period and with the Lutt Johann Bridge Company that constructed it. As such it is locally eligible under Criterion C.







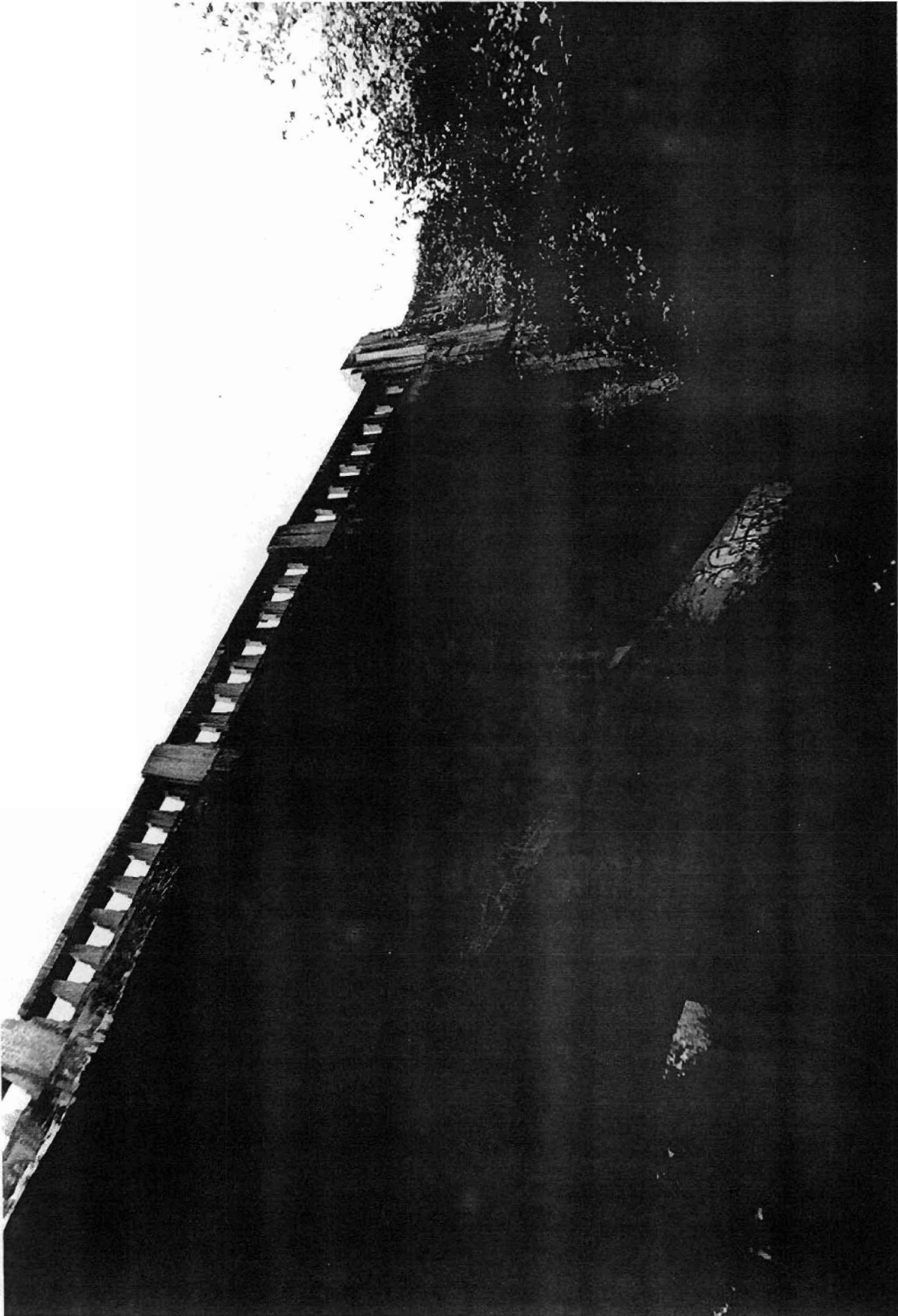
ST. LOUIS-SAN FRANCISCO RY.
FRED. LUTTJOHANN
CONTRACTOR.

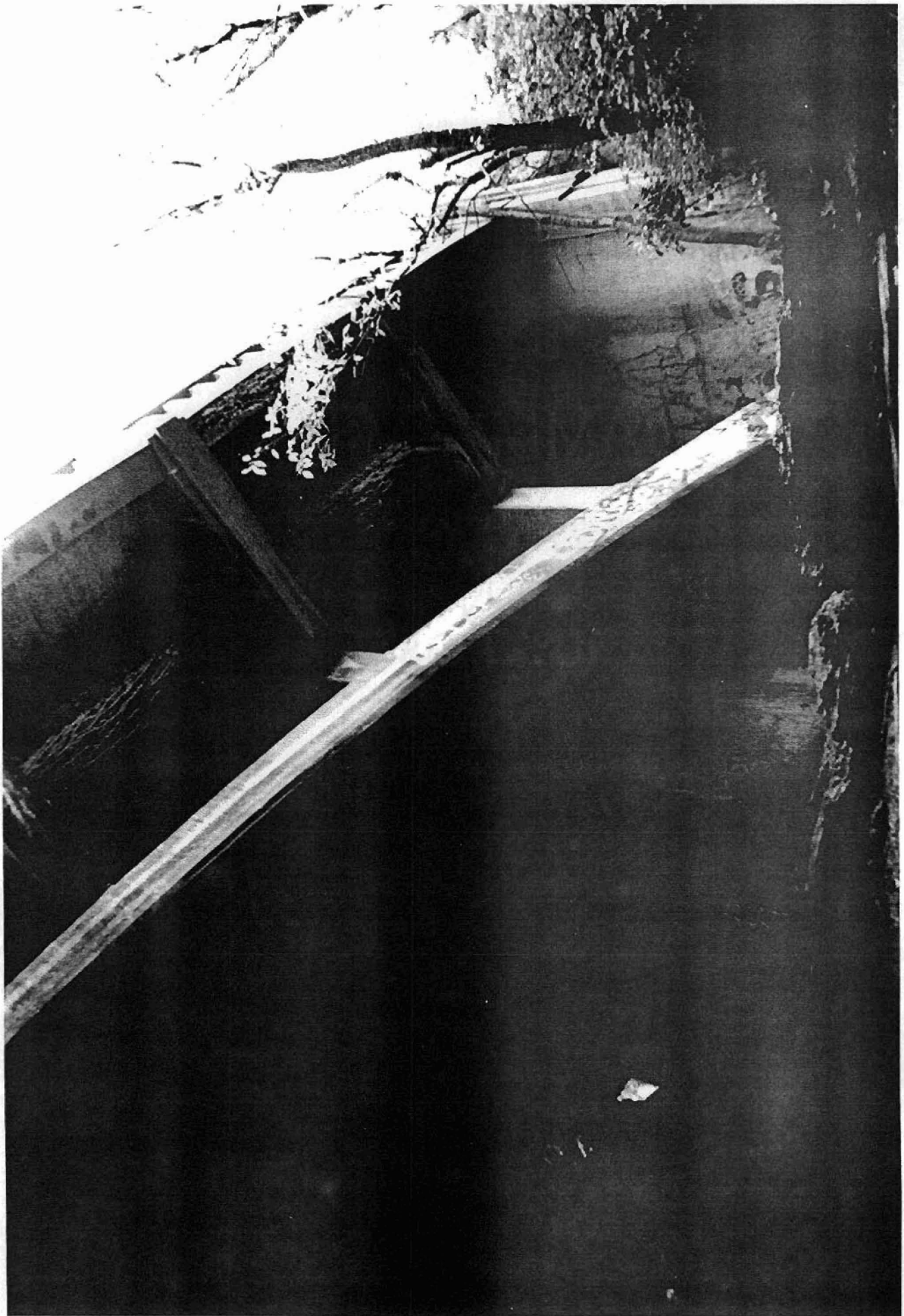
ARKANSAS
STATE HIGHWAY COMMISSION

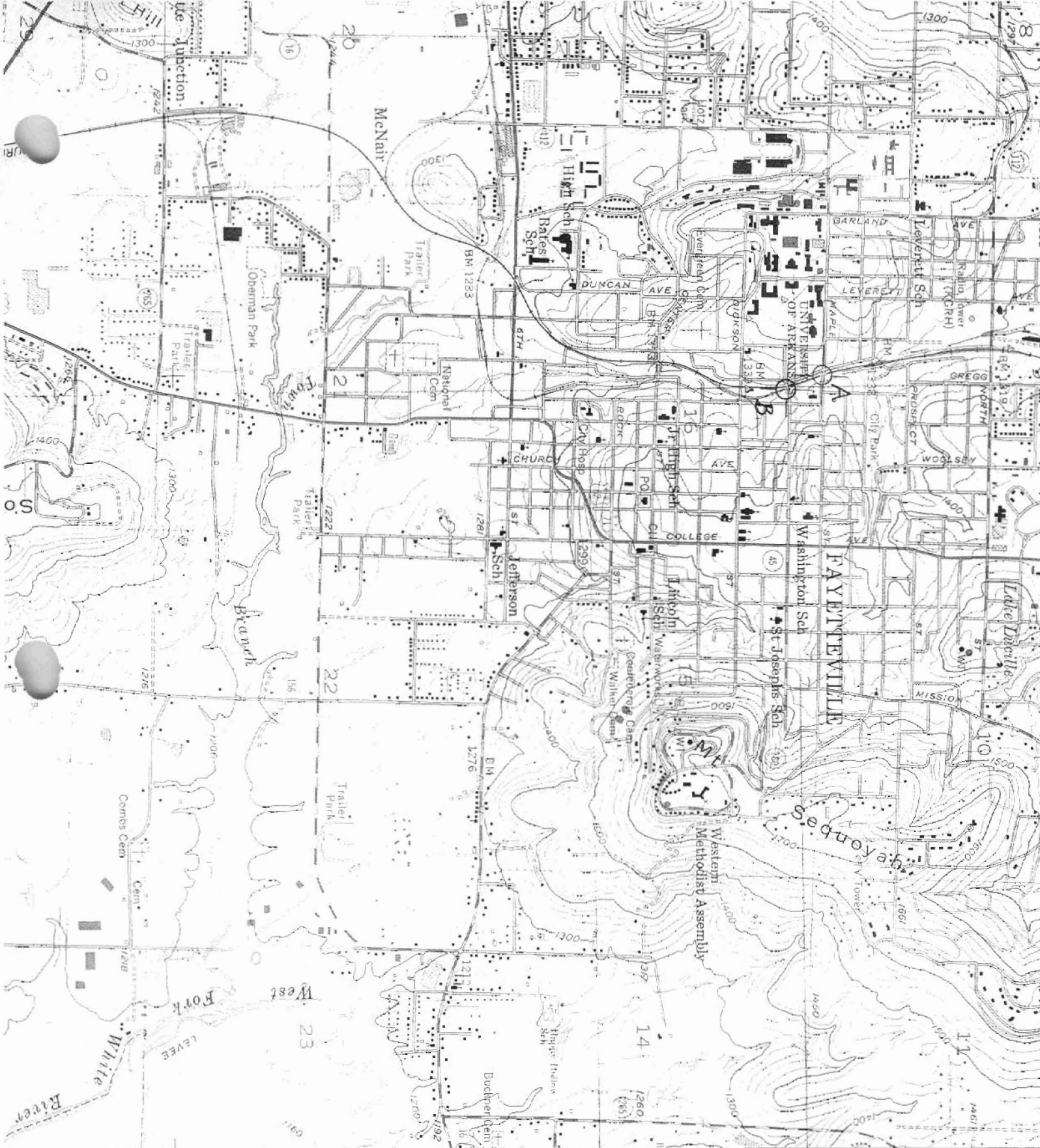
AND THE
UNITED STATES
BUREAU OF PUBLIC ROADS

1936

BRIDGE NO.







SPRINGDALE 9 MI

- A) MAPLE ST.
 OVERTHROW
 15) 394940/
 3992140
 - B) LAFALETTE ST
 OVERTHROW
 15) 395000/
 3991960
- (ELKINS)
 7156 II SE
 FAYETTEVILLE,
 WASHINGTON CO.,
 ARKANSAS

2989
 2130'

2990

2991

2992