

United States Department of the Interior
National Park Service

NATIONAL REGISTER OF HISTORIC PLACES
REGISTRATION FORM

=====

1. Name of Property

=====

historic name: Fishback School

other name/site number: WA0359

=====

2. Location

=====

street & number: State Highway 68N

not for publication: N/A

city/town: Springdale

vicinity: X

state: AR county: Washington

code: AR 143

zip code: 72764

=====

3. Classification

=====

Ownership of Property: Private

Category of Property: Building

Number of Resources within Property:

Contributing	Noncontributing	
<u>1</u>	_____	buildings
_____	_____	sites
_____	_____	structures
_____	_____	objects
<u>1</u>	<u>0</u>	Total

Number of contributing resources previously listed in the National Register: N/A

Name of related multiple property listing: Public Schools in the Arkansas Ozarks, 1920-1940

=====

7. Description

=====

Architectural Classification:

LATE 19TH AND EARLY 20TH CENTURY AMERICAN MOVEMENTS

=====

Other Description: Plain Traditional

Materials: foundation Concrete roof Asphalt
walls WOOD/Weatherboard other N/A

Describe present and historic physical appearance. X See continuation sheet.

=====

8. Statement of Significance

=====

Certifying official has considered the significance of this property in relation to other properties: Locally.

Applicable National Register Criteria: A

Criteria Considerations (Exceptions): N/A

Areas of Significance: EDUCATION

Period(s) of Significance: 1925-1940

Significant Dates: N/A

Significant Person(s): N/A

Cultural Affiliation: N/A

Architect/Builder: Unknown

State significance of property, and justify criteria, criteria considerations, and areas and periods of significance noted above.
X See continuation sheet.

=====

9. Major Bibliographical References

=====

See "Public Schools in the Arkansas Ozarks, 1920-1940" Multiple Property Form, Section H.

___ See continuation sheet.

Previous documentation on file (NPS):

- preliminary determination of individual listing (36 CFR 67) has been requested.
- previously listed in the National Register
- previously determined eligible by the National Register
- designated a National Historic Landmark
- recorded by Historic American Buildings Survey # _____
- recorded by Historic American Engineering Record # _____

Primary Location of Additional Data:

- State historic preservation office
- Other state agency
- Federal agency
- Local government
- University
- Other -- Specify Repository: _____

=====

10. Geographical Data

=====

Acreeage of Property: Less than one

UTM References: Zone Easting Northing Zone Easting Northing

A	<u>15</u>	<u>401540</u>	<u>4003170</u>	B	___	___	___
C	___	___	___	D	___	___	___

___ See continuation sheet.

Verbal Boundary Description: ___ See continuation sheet.

Beginning at a point located on the western edge of State Highway 68N formed by its intersection with a perpendicular line running parallel to the school's northern elevation and located 50 feet to the north thereof, proceed along said line for a distance of approximately 200 feet to its intersection with a perpendicular line running parallel to the school's western elevation; thence proceed southerly along said line for a distance of approximately 200 feet to its intersection with a perpendicular line running parallel to the school's southern elevation; thence proceed easterly along said line for a distance of approximately 200 feet to its intersection with a perpendicular line running along the western edge of State Highway 68N; thence proceed northerly along said line for a distance of approximately 200 feet to the point of beginning.

Boundary Justification: ___ See continuation sheet.

This boundary includes both the historic resource and all the surrounding property known to have been historically associated therewith that retains its integrity.

=====
11. Form Prepared By
=====

Name/Title: Kenneth Story, National Register Coordinator

Organization: Arkansas Historic Preservation Program Date: July 10, 1992

Street & Number: 225 E. Markham, Suite 300 Telephone: (501) 324-9346

City or Town: Little Rock State: AR ZIP: 72201

United States Department of the Interior
National Park Service

National Register of Historic Places Continuation Sheet

Section number 7 Page 1

Summary

The Fishback School is a single story, wood frame classroom building designed in the Plain Traditional style with restrained Colonial Revival influences. The asphalt shingle hipped roof covers an essentially rectangular plan, the only interruption being the projecting, central front entrance bay. The weatherboarded walls are supported by a continuous concrete block foundation.

Elaboration

The Fishback School is a single story, wood frame classroom building designed in the Plain Traditional style with restrained Colonial Revival influences. This plan is essentially rectangular, as it is relieved only by the projecting, pedimented front entrance bay. The asphalt shingle hipped roof covers an essentially rectangular plan, the only interruption being the projecting, central front entrance bay. The weatherboarded walls are supported by a continuous concrete block foundation.

The eastern or front elevation is symmetrically-organized around the central entrance bay. The pediment of the entrance bay is filled with wood weatherboarding and a sloping asphalt shingle cornice just above the entrance. The transom of the entry below has been filled with narrow, flush planks, and the double-leaf entrance is accessed via a low set of concrete steps. The walls to either side of the central bay are each lighted with three nine-over-one sash windows. The western elevation opposite is also symmetrical. It is accessed via two symmetrically-placed, central, single-leaf entries and lighted with three fixed nine-pane wood windows to either side of the entries.

The northern and southern elevations are identical, as each is lighted with a central, nine-over-one wood sash window.

Significant exterior details are limited to the pedimented front entrance bay and the tall, panelled friezeboard placed directly beneath the cornice.

The Fishback School has remained largely unaltered since its construction and is in good condition.

United States Department of the Interior
National Park Service

National Register of Historic Places Continuation Sheet

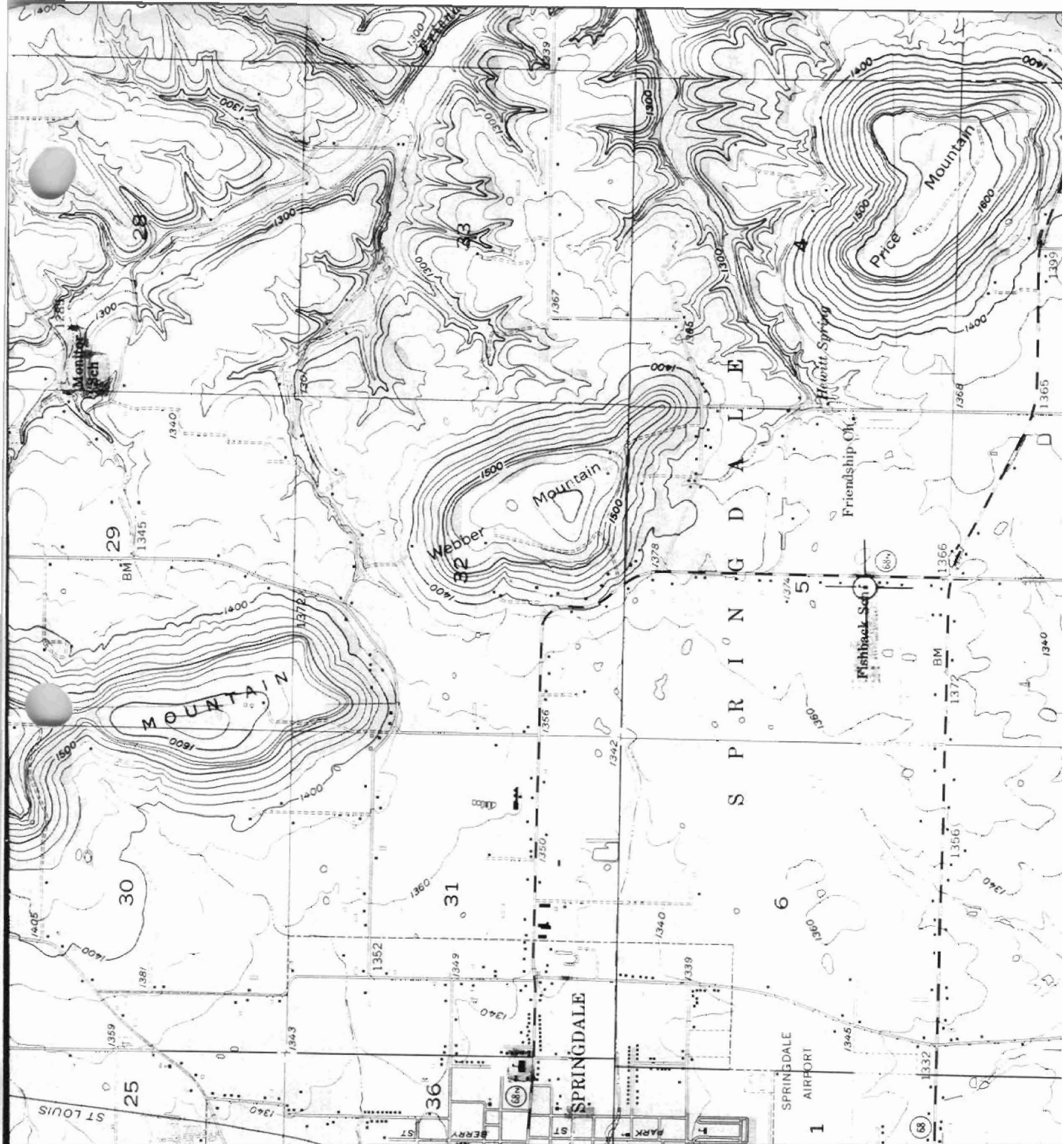
Section number 8 Page 1

Fishback School

Springdale, in the 1920's, was an important market center for the grapes, apples, vegetables and other produce cultivated on the farmlands and orchards of Washington and Benton counties. The construction of the Fishback School in 1925 reflects the growth of Springdale as a market hub, as well as the improvement in educational physical plants as a result of the McRae Administration.¹

The Fishback School, constructed during the period covered by the historic context *The Evolution of the Public School System in the Arkansas Ozarks, 1920-1940*, is a representative example of a small, wood frame school building constructed for a rural school district. Its use during this period as a local school building clearly identifies it with this historic context and with this property type. It is significant locally under Criterion A through its direct associations with the history of the evolution of the public school system in the Ozark Mountain region of the state during this period.

¹The WPA Guide to 1930's Arkansas, 310.



0.9 MI. TO U.S. 62 & 71
 SLOAM SPRINGS 25 MI.

T. 18 N.
 T. 17 N.

*FISHBACK V. CHOWN
 SPRINGDALE MO.
 W. 450015-10/4003170
 FAX 400-359*

15/4015-10/4003170

WA0359