

*NR Listed 5/26/95*

United States Department of the Interior  
National Park Service

NATIONAL REGISTER OF HISTORIC PLACES  
REGISTRATION FORM

=====

1. Name of Property

=====

historic name: Lafayette Street Overpass

other name/site number: N/A

=====

2. Location

=====

street & number: Lafayette Street at its crossing of the Frisco Railroad

not for publication: N/A

city/town: Fayetteville

vicinity: N/A

state: AR county: Washington code: AR 143 zip code: 72701

=====

3. Classification

=====

Ownership of Property: Public-local

Category of Property: Structure

Number of Resources within Property:

Contributing	Noncontributing	
_____	_____	buildings
_____	_____	sites
<u>1</u>	_____	structures
_____	_____	objects
<u>1</u>	<u>0</u>	Total

Number of contributing resources previously listed in the National Register: N/A

Name of related multiple property listing: Historic Bridges of Arkansas

\_\_\_\_\_

=====
4. State/Federal Agency Certification
=====

As the designated authority under the National Historic Preservation Act of 1986, as amended, I hereby certify that this X nomination request for determination of eligibility meets the documentation standards for registering properties in the National Register of Historic Places and meets the procedural and professional requirements set forth in 36 CFR Part 60. In my opinion, the property X meets does not meet the National Register Criteria. See continuation sheet.

Signature of certifying official Date

Arkansas Historic Preservation Program
State or Federal agency and bureau

In my opinion, the property meets does not meet the National Register criteria. See continuation sheet.

Signature of commenting or other official Date

State or Federal agency and bureau

=====
5. National Park Service Certification
=====

I, hereby certify that this property is:

- entered in the National Register See continuation sheet.
determined eligible for the National Register See continuation sheet.
determined not eligible for the National Register
removed from the National Register
other (explain):

Signature of Keeper Date of Action

=====
6. Function or Use
=====

Historic: TRANSPORTATION Sub: Road-related
Current: TRANSPORTATION Sub: Road-related

=====

**7. Description**

=====

Architectural Classification:

Other

\_\_\_\_\_

\_\_\_\_\_

Other Description: Open masonry substructure

Materials:	foundation	<u>Concrete</u>	roof	<u>N/A</u>
	walls	<u>Concrete/metal</u>	other	<u>Asphalt over</u>
		<u>balustrade</u>		<u>reinforced</u>
				<u>concrete</u>

Describe present and historic physical appearance. X See continuation sheet.

=====

**8. Statement of Significance**

=====

Certifying official has considered the significance of this property in relation to other properties: Local.

Applicable National Register Criteria: C

Criteria Considerations (Exceptions): N/A

Areas of Significance: ENGINEERING

\_\_\_\_\_

\_\_\_\_\_

\_\_\_\_\_

Period(s) of Significance: 1938-1939

Significant Dates: 1938

Significant Person(s): N/A

\_\_\_\_\_

Cultural Affiliation: N/A

Architect/Builder: United States Bureau of Public Roads

\_\_\_\_\_

\_\_\_\_\_

State significance of property, and justify criteria, criteria considerations, and areas and periods of significance noted above. X See continuation sheet.

=====
9. Major Bibliographical References
=====

See "Historic Bridges of Arkansas" MPS Nomination, Section H.

\_\_\_ See continuation sheet.

Previous documentation on file (NPS):

- preliminary determination of individual listing (36 CFR 67) has been requested.
- previously listed in the National Register
- previously determined eligible by the National Register
- designated a National Historic Landmark
- recorded by Historic American Buildings Survey # \_\_\_\_\_
- recorded by Historic American Engineering Record # \_\_\_\_\_

Primary Location of Additional Data:

- X State historic preservation office
- Other state agency
- Federal agency
- Local government
- University
- Other -- Specify Repository: \_\_\_\_\_

=====
10. Geographical Data
=====

Acreage of Property: Less than one

Table with 5 columns: UTM References, Zone Easting, Northing, Zone Easting, Northing. Rows A, B, C, D with numerical values and blank lines.

\_\_\_ See continuation sheet.

Verbal Boundary Description: \_\_\_ See continuation sheet.

Beginning at a point formed by the intersection of the northern edge of Lafayette Street with a perpendicular line running parallel with the western end of the bridge and located approximately 25 feet to the west thereof, proceed northerly for a distance of approximately 25 feet to its intersection with a perpendicular line running parallel with the bridge's northern side; thence proceed easterly along said line for a distance of approximately 170 feet to its intersection with a perpendicular line; thence proceed southerly along said line for a distance of approximately 80 feet to its intersection with a perpendicular line; thence proceed westerly along said line for a distance of approximately 170 feet to its intersection with a perpendicular line; thence proceed northerly to the point of beginning.

Boundary Justification: \_\_\_ See continuation sheet.

This boundary includes all the property historically associated with this resource.

=====

11. Form Prepared By

=====

Name/Title: Ken Story, National Register/Survey Coordinator

- Organization: Arkansas Historic Preservation Program Date: 04/04/95

Street & Number: 323 Center Street, Suite 1500 Telephone: (501) 324-9880

City or Town: Little Rock State: AR Zip: 72201

**United States Department of the Interior**  
**National Park Service**

**National Register of Historic Places**  
**Continuation Sheet**

Section number   7   Page   1  

---

**Description**

Located on Lafayette Street at the point where it crosses the Frisco Railroad line, the Lafayette Street Overpass is of reinforced concrete construction and consists of a three-span deck resting upon by two reinforced concrete supports (of three connected piers each) placed to either side of the railroad tracks and solid concrete abutments beneath the approaches. It is approximately 120 feet in length and 30 feet in width at its widest point. Its abutment and pier material is reinforced concrete, and its deck material is asphalt laid over reinforced concrete. A decorative metal balustrade connects substantial concrete posts that feature original inset lighting fixtures, and the balustrade borders the pedestrian sidewalk on either side of the deck.

United States Department of the Interior  
National Park Service

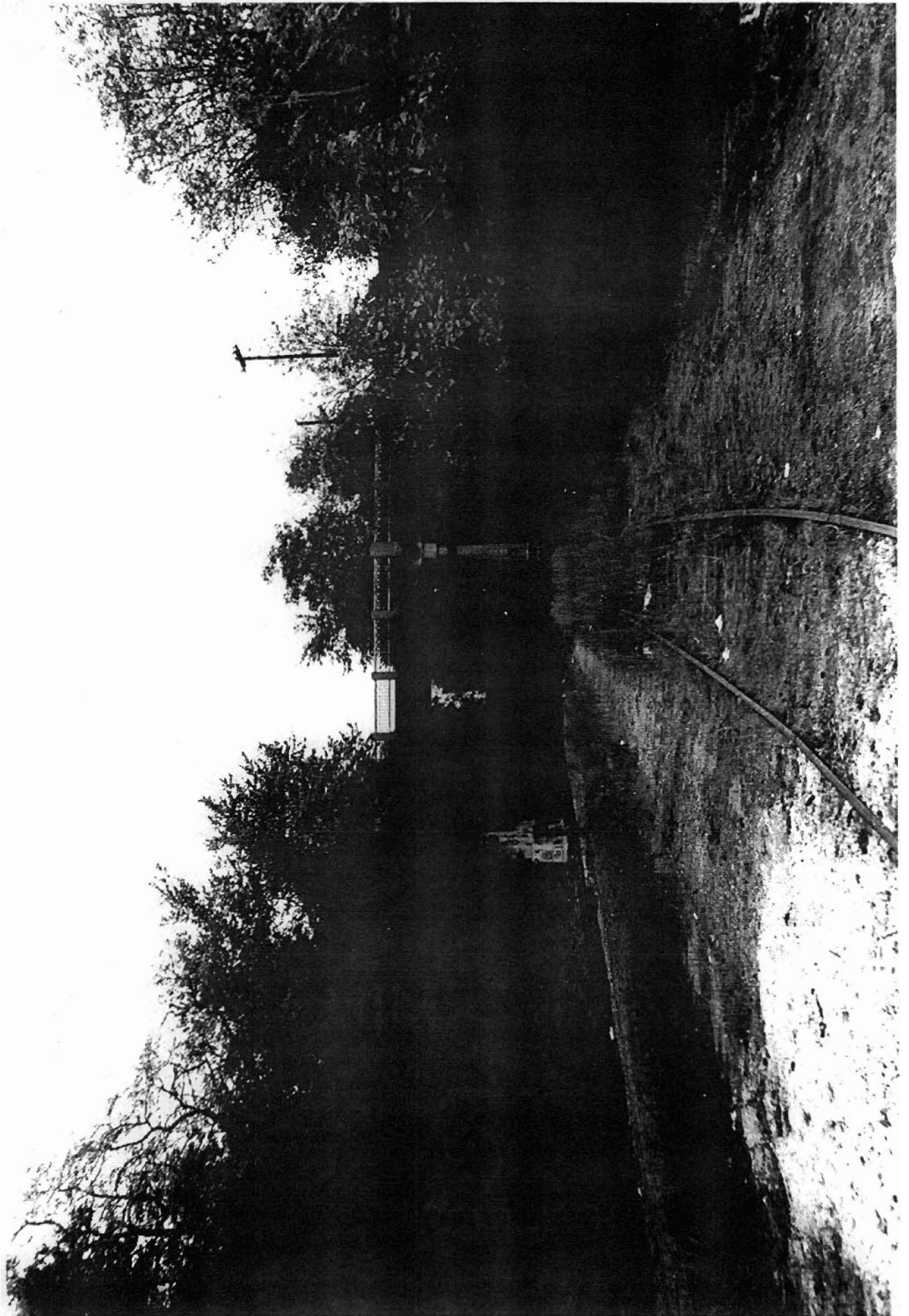
## National Register of Historic Places Continuation Sheet

Section number 8 Page 1

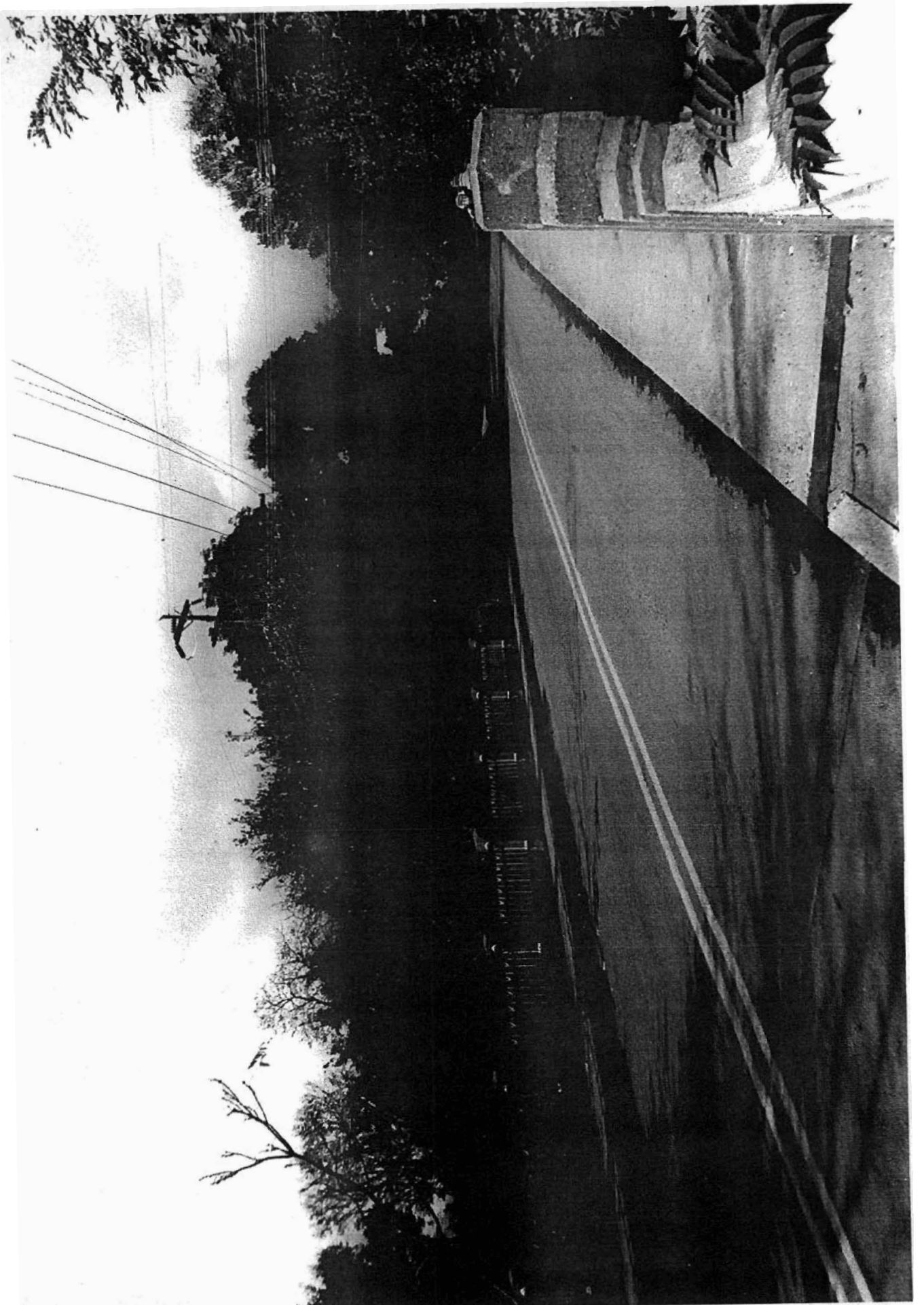
---

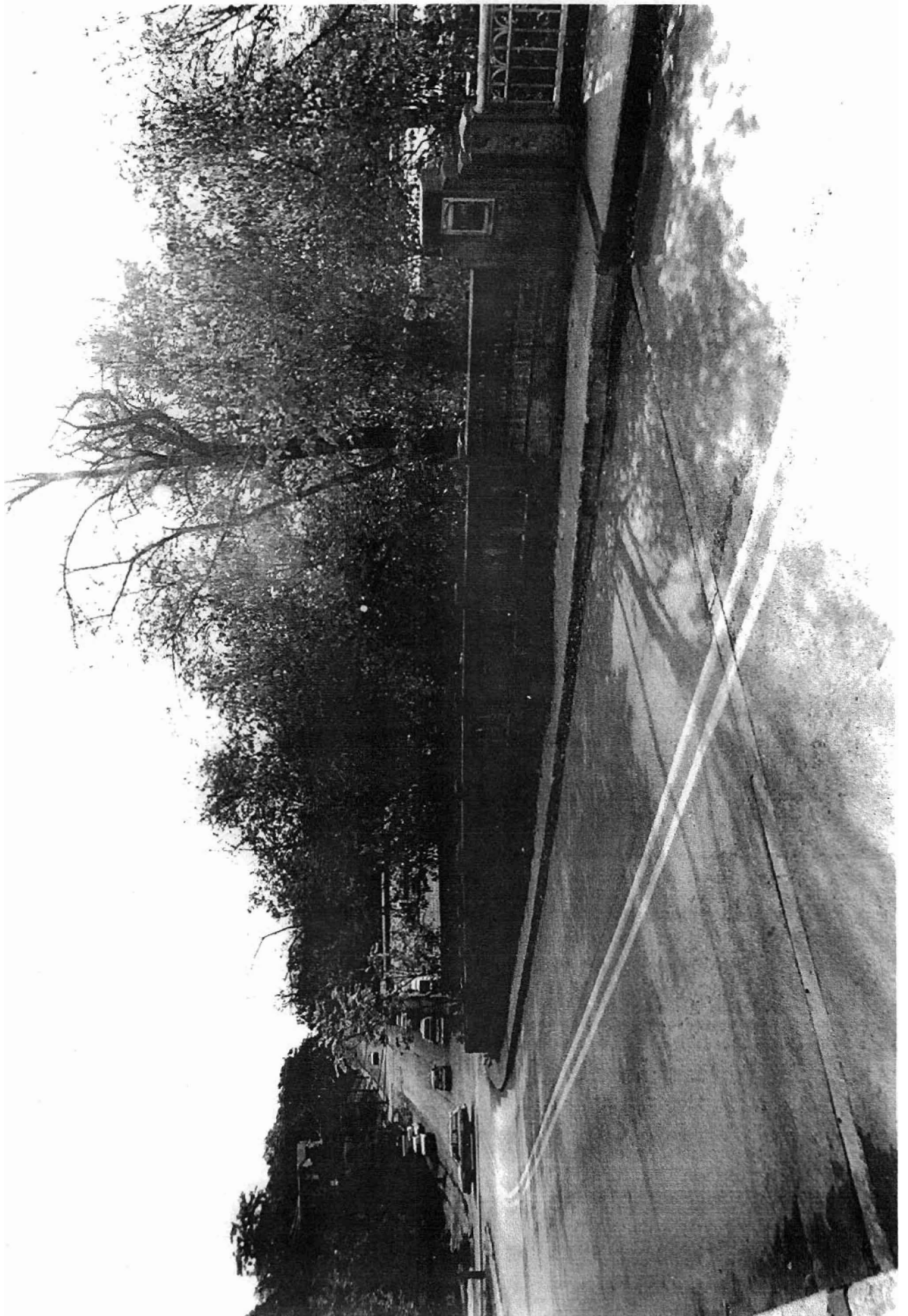
### Significance

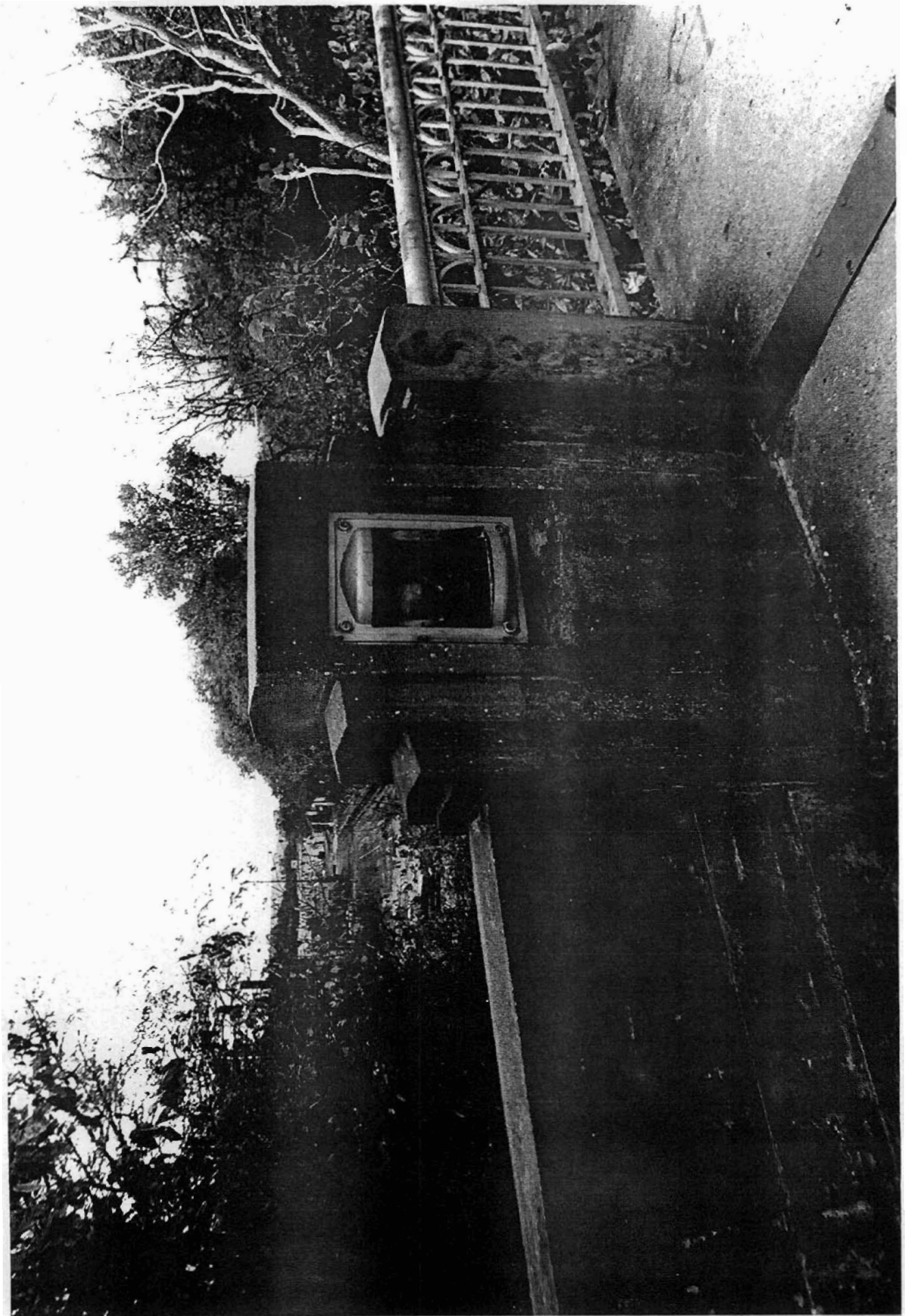
Constructed in 1938 by the contractor Ed. B. Mooney, Inc., the Lafayette Street Overpass is associated with the *Arkansas Highway and Transportation Era* historic context and is of the open masonry substructure type. Constructed under the authority of the St. Louis-San Francisco Railroad, the Arkansas State Highway Commission and the United States Bureau of Public Roads, its designer is not known. Given its intact condition it retains sufficient integrity to remain associated with its historic period, and stands as the best example of an Art Deco-influenced concrete bridge in Fayetteville; it is thus locally eligible under Criterion C.

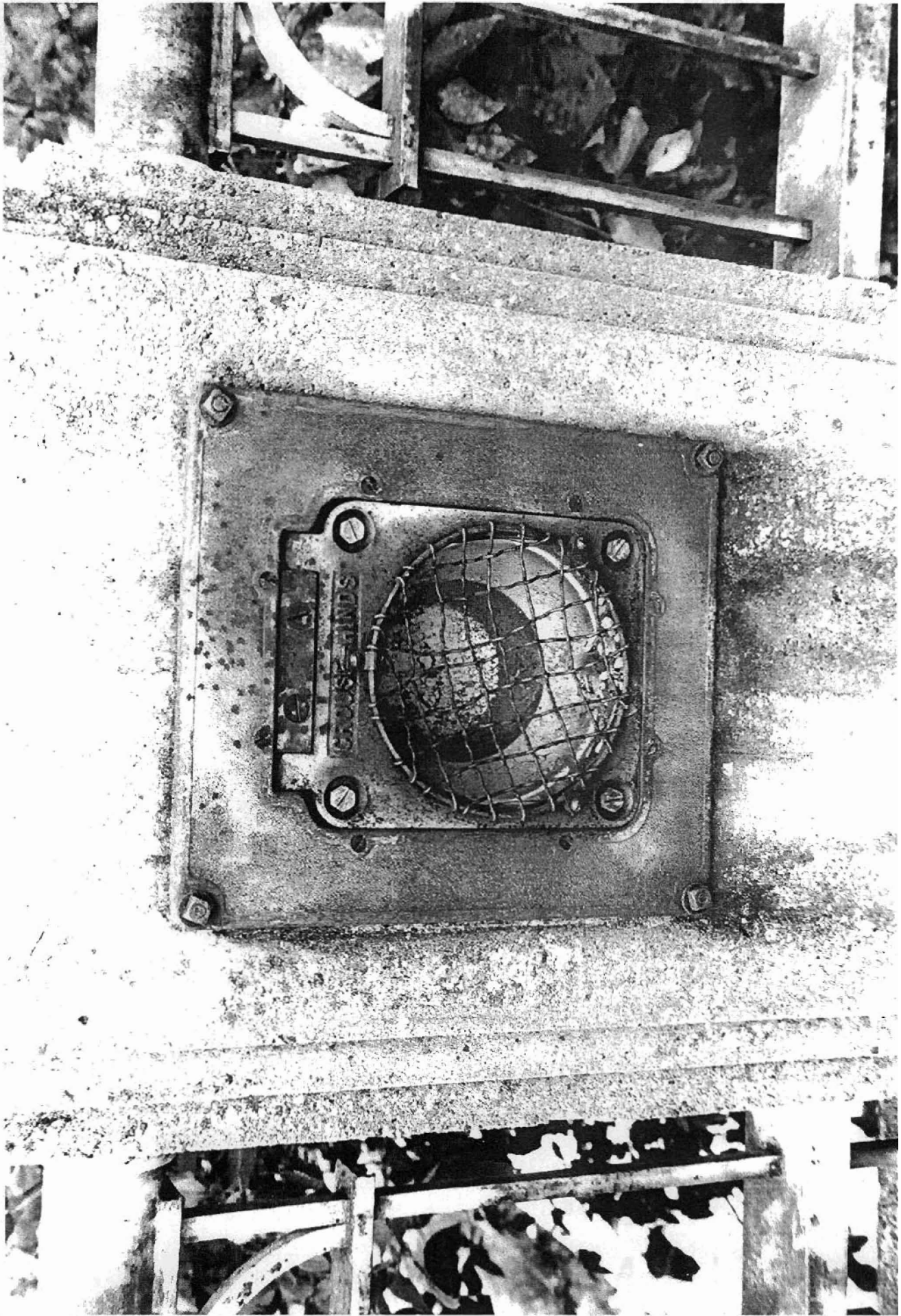


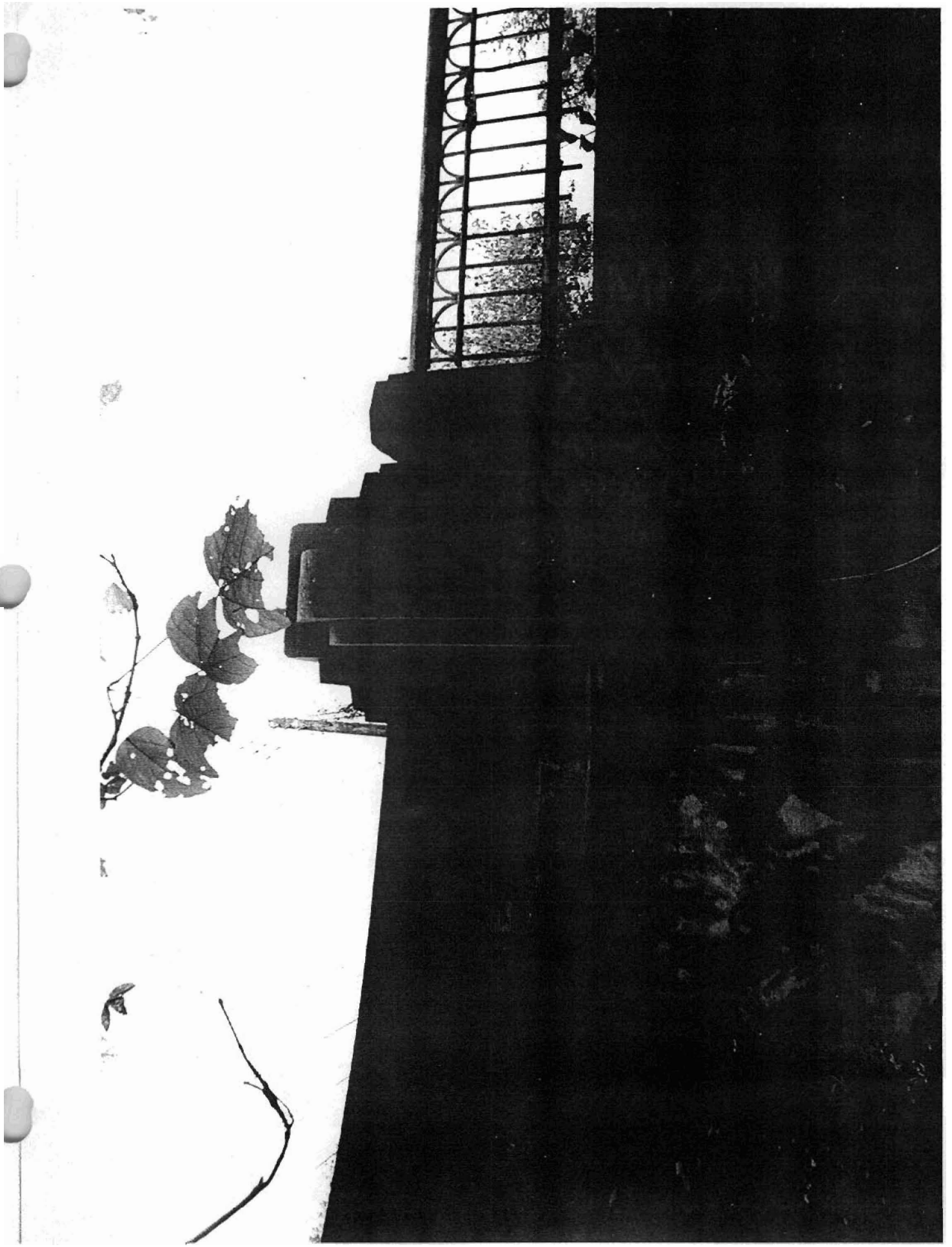












WEST LAFAYETTE  
STREET OVERRASS  
ED. B. MOONEY, INC.

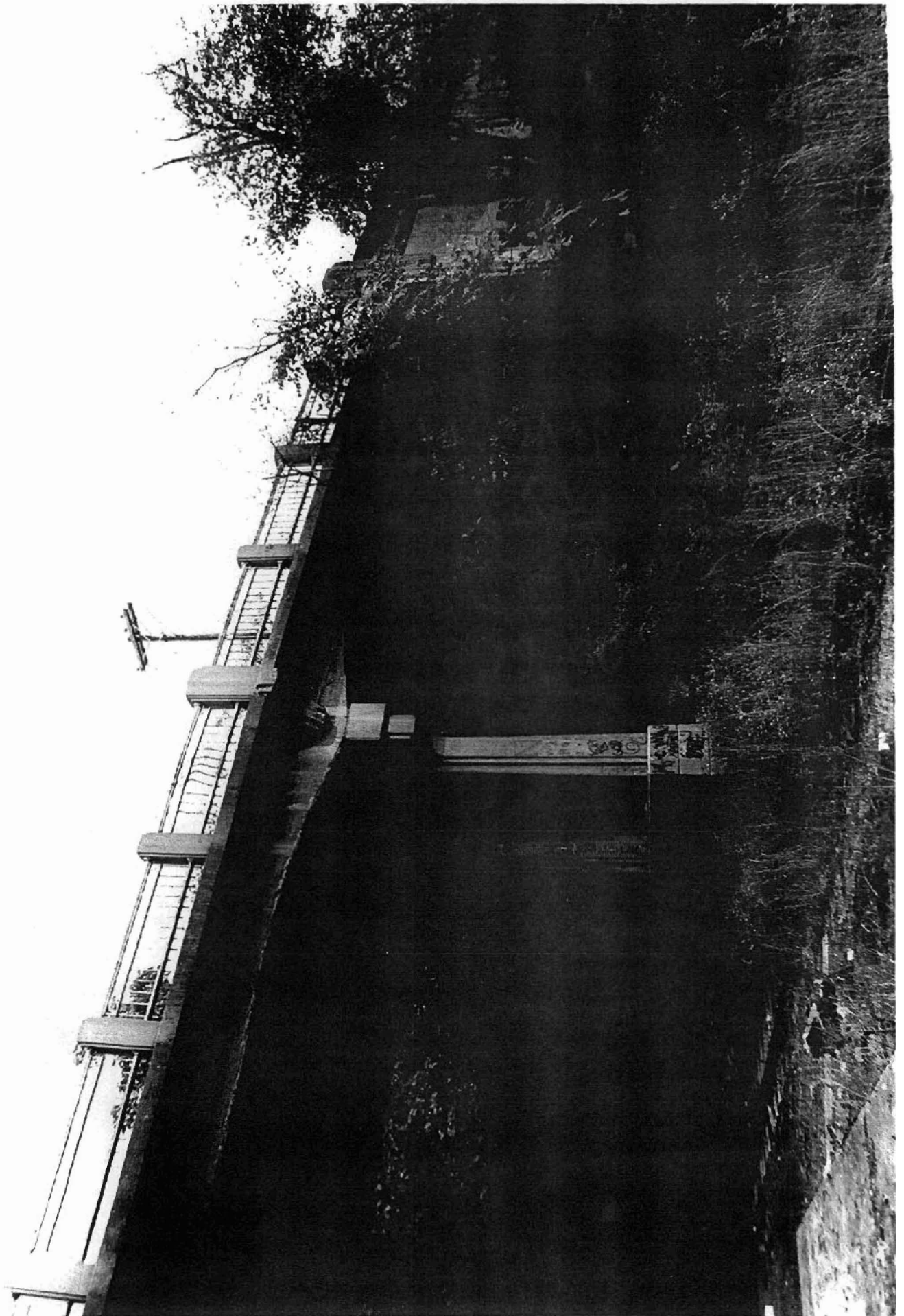
CONTRACTOR.

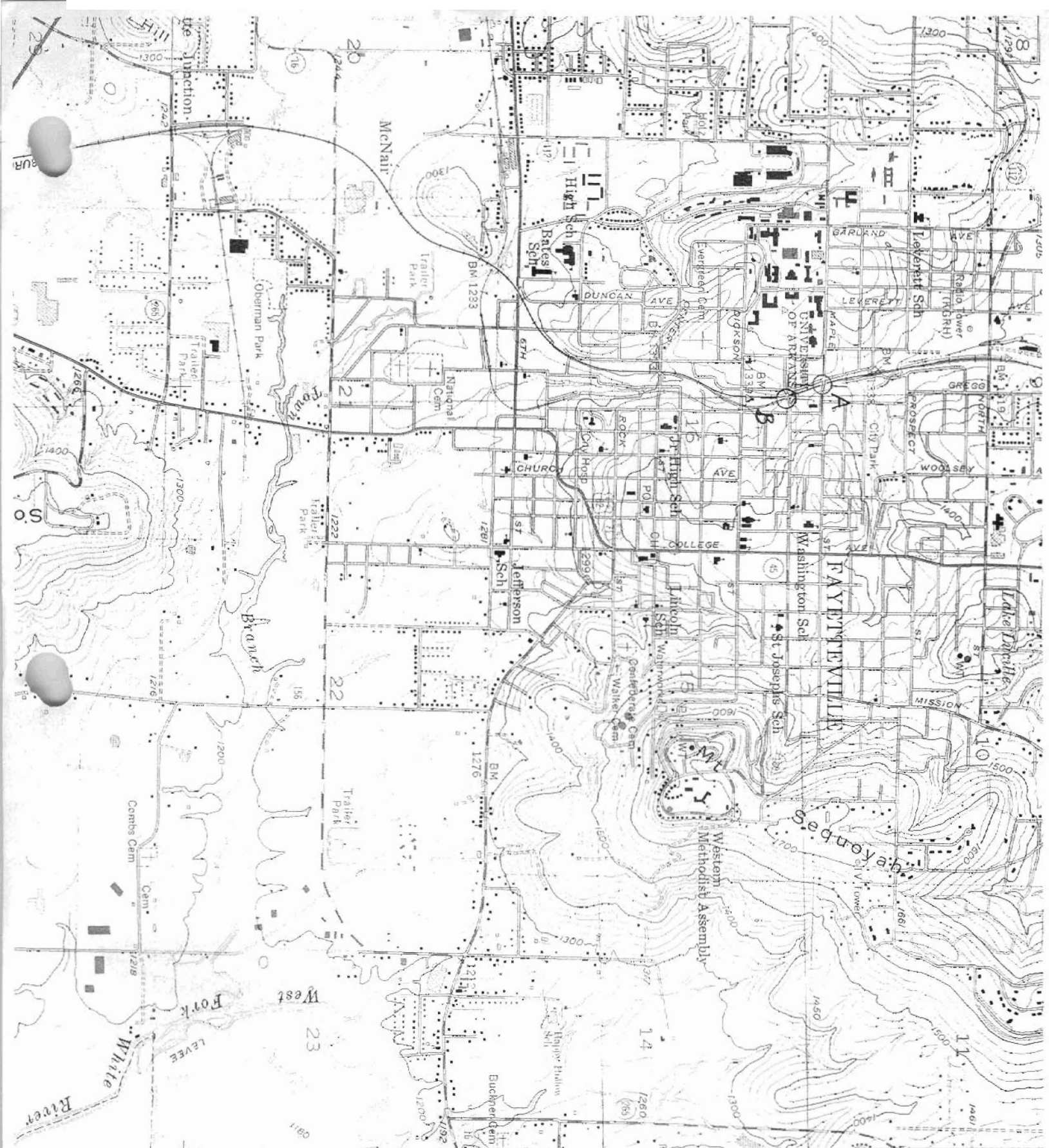
ARKANSAS  
STATE HIGHWAY COMMISSION  
AND THE

UNITED STATES  
BUREAU OF PUBLIC ROADS

1938

BRIDGE NO.





(ELKINS) 7155 N SE  
 FAYETTEVILLE,  
 ARKANSAS  
 3991960  
 B) LAFAYETTE ST  
 OVERTPASS  
 15) 395000/  
 3992140  
 A) MAPLE ST  
 OVERTPASS  
 15) 394940/  
 3992140  
 SPRINGDALE 9 MI