

United States Department of the Interior
National Park Service

NATIONAL REGISTER OF HISTORIC PLACES
REGISTRATION FORM

1. Name of Property

historic name: Alco School

other name/site number: ST0277

2. Location

street & number: Just north of State Highway 66

not for publication: N/A

city/town: Alco

vicinity: N/A

state: AR

county: Stone

code: AR 137

zip code: 72610

3. Classification

Ownership of Property: Private

Category of Property: Building

Number of Resources within Property:

Contributing	Noncontributing	
<u>1</u>	_____	buildings
_____	_____	sites
_____	_____	structures
_____	_____	objects
<u>1</u>	<u>0</u>	Total

Number of contributing resources previously listed in the National Register: N/A

Name of related multiple property listing: Public Schools in the Arkansas Ozarks, 1920-1940

=====
4. State/Federal Agency Certification
=====

As the designated authority under the National Historic Preservation Act of 1986, as amended, I hereby certify that this X nomination _____ request for determination of eligibility meets the documentation standards for registering properties in the National Register of Historic Places and meets the procedural and professional requirements set forth in 36 CFR Part 60. In my opinion, the property X meets _____ does not meet the National Register Criteria. _____ See continuation sheet.

Cathryn A. Byrd _____ 7-14-92
Signature of certifying official Date

Arkansas Historic Preservation Program
State or Federal agency and bureau

In my opinion, the property _____ meets _____ does not meet the National Register criteria. _____ See continuation sheet.

Signature of commenting or other official Date

State or Federal agency and bureau

=====
5. National Park Service Certification
=====

I, hereby certify that this property is:

- _____ entered in the National Register _____
_____ See continuation sheet.
- _____ determined eligible for the _____
National Register _____
- _____ See continuation sheet.
- _____ determined not eligible for the _____
National Register _____
- _____ removed from the National Register _____
- _____ other (explain): _____

Signature of Keeper Date
of Action

=====
6. Function or Use
=====

Historic: EDUCATION Sub: School

Current: DOMESTIC Sub: Single dwelling

=====
7. Description
=====

Architectural Classification:

LATE 19TH AND EARLY 20TH CENTURY AMERICAN MOVEMENTS

Other Description: Plain Traditional

Materials: foundation Stone roof Asphalt
walls Stone other N/A

Describe present and historic physical appearance. X See continuation sheet.

=====
8. Statement of Significance
=====

Certifying official has considered the significance of this property in relation to other properties: Locally.

Applicable National Register Criteria: A

Criteria Considerations (Exceptions): N/A

Areas of Significance: EDUCATION
SOCIAL HISTORY

Period(s) of Significance: 1938-1940

Significant Dates: N/A

Significant Person(s): N/A

Cultural Affiliation: N/A

Architect/Builder: National Youth Administration

State significance of property, and justify criteria, criteria considerations, and areas and periods of significance noted above. X See continuation sheet.

=====

9. Major Bibliographical References

=====

See "Public Schools in the Arkansas Ozarks, 1920-1940" Multiple Property Form, Section H.

___ See continuation sheet.

Previous documentation on file (NPS):

- preliminary determination of individual listing (36 CFR 67) has been requested.
- previously listed in the National Register
- previously determined eligible by the National Register
- designated a National Historic Landmark
- recorded by Historic American Buildings Survey # _____
- recorded by Historic American Engineering Record # _____

Primary Location of Additional Data:

- State historic preservation office
- Other state agency
- Federal agency
- Local government
- University
- Other -- Specify Repository: _____

=====

10. Geographical Data

=====

Acreage of Property: Less than one

UTM References: Zone Easting Northing Zone Easting Northing

A	<u>15</u>	<u>556630</u>	<u>3971850</u>	B	___	___	___
C	___	___	___	D	___	___	___

___ See continuation sheet.

Verbal Boundary Description: ___ See continuation sheet.

Beginning at a point formed by the intersection of a line running parallel with the building's southern elevation and located 50 feet to the south thereof with a perpendicular line running parallel with the building's western elevation and located 50 feet to the west thereof, proceed northerly along the latter line for a distance of approximately 200 feet to its intersection with a perpendicular line running parallel to the building's northern elevation; thence proceed easterly along said line for a distance of approximately 200 feet to its intersection with a line running parallel to the building's eastern elevation; thence proceed southerly along said line for a distance of approximately 200 feet to its intersection with a perpendicular line running parallel with the building's southern elevation; thence proceed westerly along said line for a distance of approximately 200 feet to the point of beginning.

Boundary Justification: ___ See continuation sheet.

This boundary includes both the historic resource and all the surrounding property known to have been historically associated therewith that retains its integrity.

=====
11. Form Prepared By
=====

Name/Title: Kenneth Story, National Register Coordinator

Organization: Arkansas Historic Preservation Program Date: July 14, 1992

Street & Number: 225 E. Markham, Suite 300 Telephone: (501) 324-9346

City or Town: Little Rock State: AR ZIP: 72201

United States Department of the Interior
National Park Service

National Register of Historic Places Continuation Sheet

Section number 7 Page 1

Summary

The Alco School is a one story cut stone structure built by the National Youth Administration in 1938. The building exhibits construction typical of WPA/NYA structures.

Elaboration

The Alco School, now a private dwelling, was constructed by the NYA in 1938. The plan is rectangular and consists of a continuous stone foundation supporting cut stone walls that are covered with a composition-shingle, hipped roof. Louvered eyebrow dormers ornament the roof.

The western elevation features a parapeted porch with single bay entry and one two-over-two window.

The southern elevation features two one-over-one window treatments and a small gable roofed wooden structure covering a water pump.

The eastern exposure contains the only unaltered windows. They are of a nine-over-nine arrangement. The remaining windows are one-over-ones.

The northern elevation is blank.

The marker plaque for this building states: "Built in cooperation with the Alco School District. School board members were A.M. Lawrence - President, C.E. Ward - Secretary and J.R. Gilbert."

Oral history tells us that grades 1-5 met in the north room of this school while grades 6-9 met in the southern room.

United States Department of the Interior
National Park Service

National Register of Historic Places Continuation Sheet

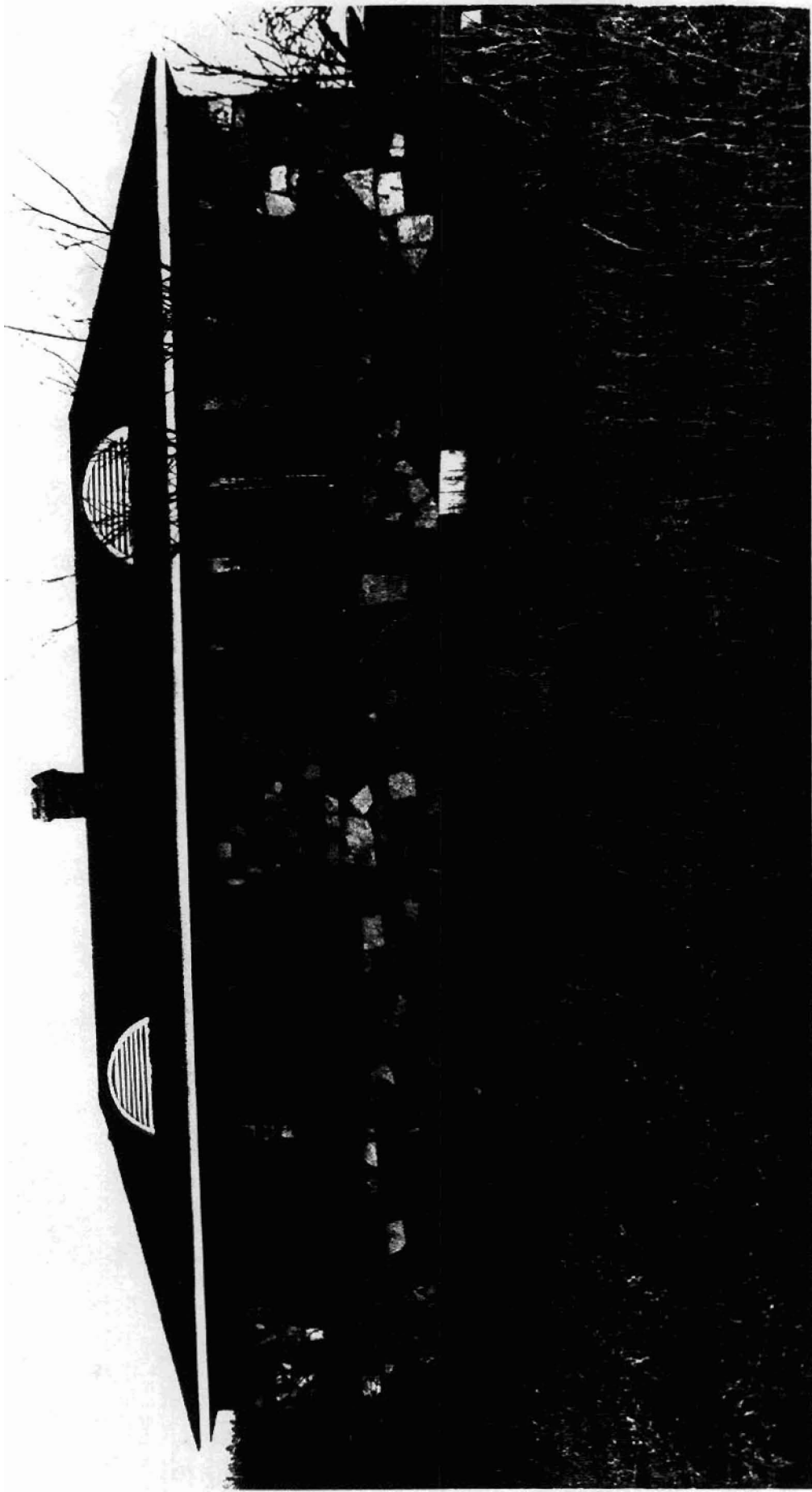
Section number 8 Page 1

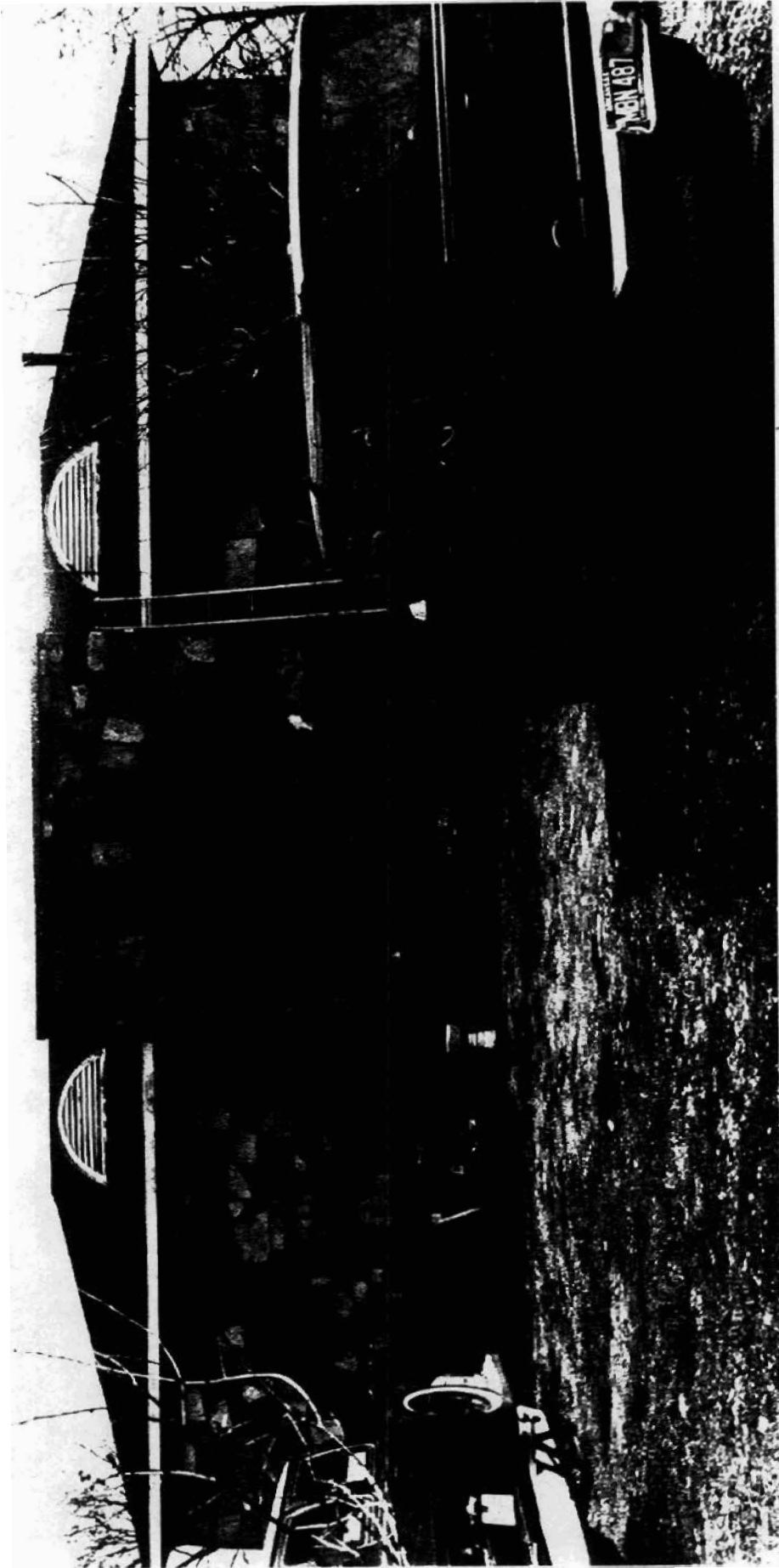
Alco School

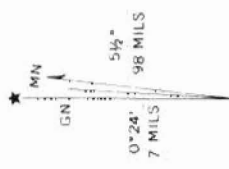
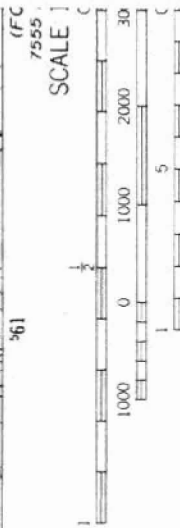
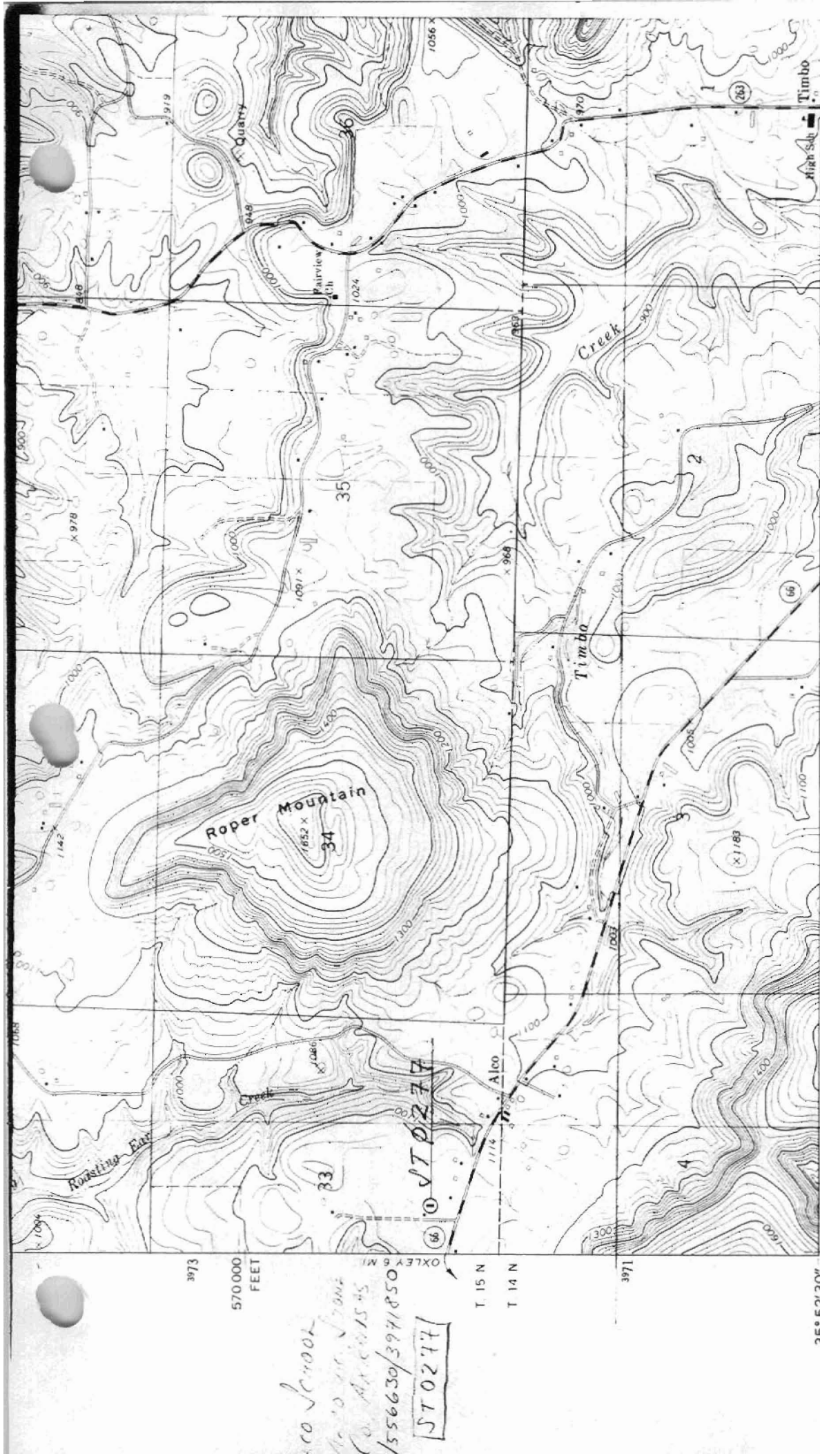
Stone County has always been one of Arkansas's most isolated and sparsely populated counties; as late as the 1940's, the county's only rail link with the rest of the state was the Missouri & North Arkansas depot at Arlberg in the extreme southwest corner of the state, several miles south of Alco. Mountain View, the county seat with a population of 420, was the county's largest town. Cattle and fruit growing were the only major industries in Stone County during the 1930's, and most of the all-white population was engaged in subsistence agriculture on yeoman farms. The Depression hit these subsistence farmers unusually hard, and the W.P.A. funded school construction project in Alco in 1938 established a much-needed educational facility for the impoverished region.¹

The Alco School, constructed during the period covered by the historic context *The Evolution of the Public School System in the Arkansas Ozarks, 1920-1940*, is a representative example of a small stone school building constructed for a rural school district. Its documented construction by the N.Y.A. and its use during this period as a local school building clearly identify it with this historic context and with this property type. It is significant locally under Criterion A through its direct associations with both the history of the evolution of the public school system in the Ozark Mountain region of the state during this period and the N.Y.A.

¹Dallas T. Herndon, Annals of Arkansas, 1947 (Little Rock, AR: The Historical Record Association, 1947), 720.







THIS MAP COMPLIES WITH NATIO
 FOR SALE BY U. S. GEOLOGICAL SURVEY, DENVER
 AND ARKANSAS GEOLOGICAL COMMISS
 A FOLDER DESCRIBING TOPOGRAPHIC MAPS

UTM GRID AND 1972 MAGNETIC NORTH
 DECLINATION AT CENTER OF SHEET

3973
 570 000
 FEET
 1556630/3971850
 ST 0277

OXLEY 6 MI.
 T 15 N
 T 14 N

35° 52' 30"
 92° 22' 30"

57
 58
 59
 1 900 000 FEET
 MOUNTAIN VIEW 1/4 MI.

7555
 (FC)

3971

3973

3971

Mapped by U.S. Forest Service
 Edited and published by the Geological Survey
 Control by USGS, USC&GS, and U.S. Forest Service
 Topography by photogrammetric methods from aerial
 photographs taken 1964. Field checked 1972
 Polyconic projection. 1927 North American datum
 10,000-foot grid based on Arkansas coordinate system, north zone
 1000-meter Universal Transverse Mercator grid ticks,
 zone 15, shown in blue
 To place on the predicted North American Datum 1983
 move the projection lines 5 meters south and
 14 meters east as shown by dashed corner ticks
 There may be private inholdings within the boundaries of