

HISTORIC RESOURCES OF STONE COUNTY
STONE COUNTY, ARKANSAS

ARKANSAS HISTORIC PRESERVATION PROGRAM

Survey Number ST-240

Owner Mr. Henry Wendler

Property Name Miles Jeffery Barn

Address c/o Mrs. Richard Brewer

Location Vic. of Optimus

Box 5

Significant Date/s c.1858

Mountain View, AR 72560

ARCHITECTURAL DESCRIPTION

The Miles Jeffery Barn is part of the Miles Jeffery Homestead located in the northeast section of Stone County. The homestead began around 1858 just east of Livingston Creek. The integrity of the barn still remains intact while the other surviving structures on the homestead have been modified in recent years. The barn is comprised of three saddle notched log cribs, each divided by driveways running perpendicular to the roof's ridge pole. The cribs' foundations are made of stack stone piers. They are incorporated into a barn plan by its gable roof. The overhang of the roof creates open sheds, supported by log posts, to the northwest and southeast of the cribs.

Each crib of the Jeffery Barn differs in measurements. The largest crib, 11' x 17', occupies the northeast end of the barn plan. It stands about one and one-half stories high and has a rectangular opening in its gable end. The crib's small door, located in the center of the wall, opens southwest to the driveway. The southwest end of the barn is occupied by the smallest log crib, measuring 8' x 11'. The dimensions of the middle crib are 11' x 11'. These two cribs share a common log plate that does not extend to the larger crib. Both cribs have large door openings to the open shed on the southeast elevation. The small crib also has a rectangular opening in its gable end.

STATEMENT OF SIGNIFICANCE

Located near Livingston Creek in the northeast section of Stone County, the Miles Jeffery Barn was constructed circa 1858. The barn on the Jeffery Homestead displays a traditional evolution from the single crib to a triple crib barn plan, as the demand for its functions increased with the growth of the farm. Each log crib, separated by drives, is of a different dimension descending in size from northeast to southwest. The northeast crib was constructed around 1858, and the next two cribs, moving to the west, were added later to expand the barn. The barn is also significant because its integrity has survived the recent modifications applied to the remaining structures of the Jeffery Homestead.

Verbal Boundary Description: The nominated property, located within the S $\frac{1}{2}$ of the SW $\frac{1}{4}$ of the SW $\frac{1}{4}$ of the SE $\frac{1}{4}$ of S26, R11W, T16N, is bounded on the north, east, west and south by lines running parallel to and 100' from the major facades of the barn.

Acreage: less than 1
Quadrangle Name: Sylamore

Quadrangle Scale: 1:24000

UTM Reference:
Zone: 15

Easting: 579100

Northing: 3982600





RESOURCE PHOTOGRAPH SHEET

ARKANSAS
HISTORIC
PRESERVATION
PROGRAM

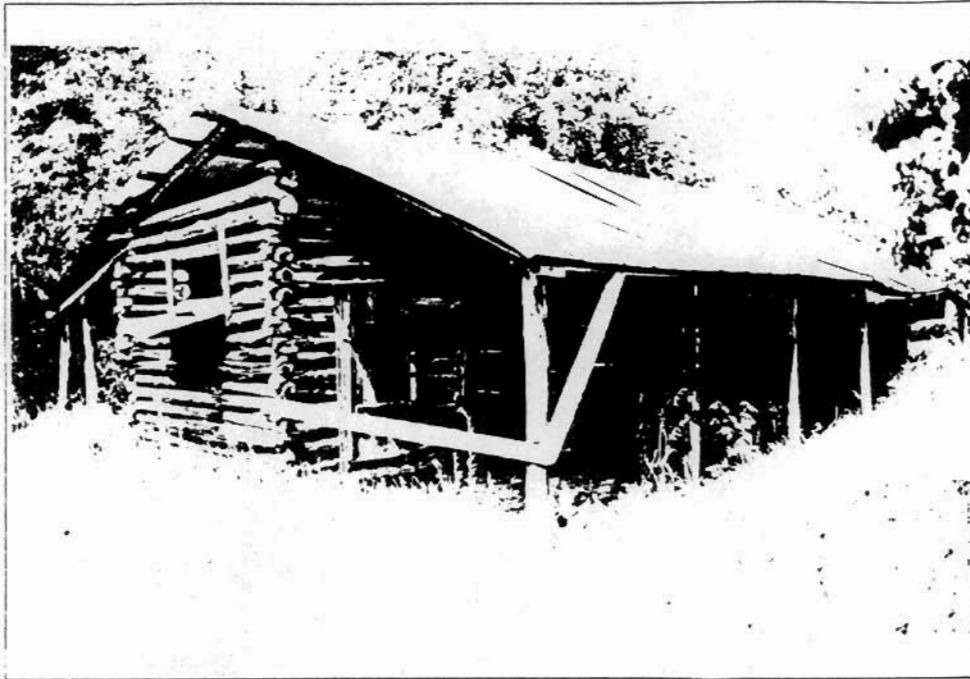


Historic Resources of Stone County
Miles Jeffery Barn, ST-240
Optimus vicinity
Don Brown, photographer
1983
Negative on file at the AHPP
Viewed from the east



RESOURCE PHOTOGRAPH SHEET

ARKANSAS
HISTORIC
PRESERVATION
PROGRAM



Historic Resources of Stone County
Miles Jeffery Barn, ST-240
Optimus vicinity
Don Brown, photographer
1983
Negative on file at the AHPP
Viewed from the southwest