

HISTORIC RESOURCES OF STONE COUNTY  
STONE COUNTY, ARKANSAS

ARKANSAS HISTORIC PRESERVATION PROGRAM

Survey Number ST-174

Owner Mr. Homer T. Hess  
Mr. Leemon Hess

Property Name Wesley Copeland House

Address Fox, AR 72051

Location vic. of Timbo

Significant Date/s c.1858

ARCHITECTURAL DESCRIPTION

The Wesley Copeland House is located in the Timbo Valley, south of the community of Timbo, in western Stone County. The c. 1858 Copeland House reflects the dogtrot or two pens with open hall plan. The log constructed house, facing south, sits on stone piers and is covered by an exaggerated overhanging gable roof. Each pen measures 18' x 18'. The log walls are locked together with square notching. Weatherboard, believed to be an 1880's application, covers the west, north and east elevations of the house.

The principal (south) elevation exhibits a full length porch created by the overhang of the gable roof. Chamfered posts, with simple beveled square capitals, supports the roof overhang. The porch cornice is adorned with a saw-tooth design. Under the porch, each of the pen's log facades displays a small centered six-over-six double-hung window with plain surrounds. The open hall, in recent years, has been enclosed with vertical board infilling. A boxed-in stairway, attached to the west wall of the open hall, leads to the loft. The stairs are accessible by way of the front porch.

The west elevation or gable end is covered with weatherboard. It features an exterior hewn stone chimney. A window opening appears to the south side of the chimney's firebox.

The north (rear) elevation features a full length shed addition. The shed was attached at the time of the weatherboard covering of the log cribs. Only a two-over-two double window on the shed's west end and the vertical board infilling of the open hall disrupts an otherwise solid weatherboard elevation.

A cube-cut stone exterior chimney distinguishes the gable end of the east elevation. A scored diamond pattern is displayed on the smooth stone surface of the chimney. Two boarded window openings in the gable flank the chimney's stack. A four-over-four double-hung window and a batten door are respectively placed to the left and right of the chimney's firebox. A second door provides access into the rear shed.

STATEMENT OF SIGNIFICANCE

Built c. 1858, the Wesley Copeland House best illustrates an original dogtrot plan in Stone County. Wesley Copeland constructed the pre-Civil War log house in the Timbo Valley in the western part of the county. The two log pens are of equal size, and are locked together by square-notching. Each pen has a finely crafted exterior stone chimney in the gable ends. The west chimney was built by

Copeland at the original construction of the house. This chimney is made of the traditional dry hewn stone found in many of the early log houses in the county. The east chimney was constructed in the late 1870's by N. F. Woodworth and is made of smooth cut stone with a diamond pattern scored on its surface. Woodworth was also responsible for the high-pitched roof, rear shed addition, and the weatherboard siding. Also significant about the house is the boxed in stairway located in the front of the hall instead of the traditional location at the rear.

Verbal Boundary Description: The nominated property, located within the SW $\frac{1}{4}$  of the NW $\frac{1}{4}$  of S18, R12W, T14N, is bounded on the south by an improved road, and on the east, west and north by lines running parallel to and 50' from the three major facades of the house.

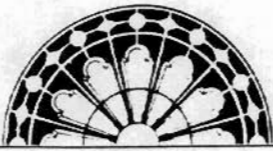
Acreage: less than 1  
Quadrangle Name: Fox

Quadrangle Scale: 1:24000

UTM Reference:  
Zone: 15

Easting: 562580

• Northing: 3967670



RESOURCE PHOTOGRAPH SHEET

ARKANSAS  
HISTORIC  
PRESERVATION  
PROGRAM

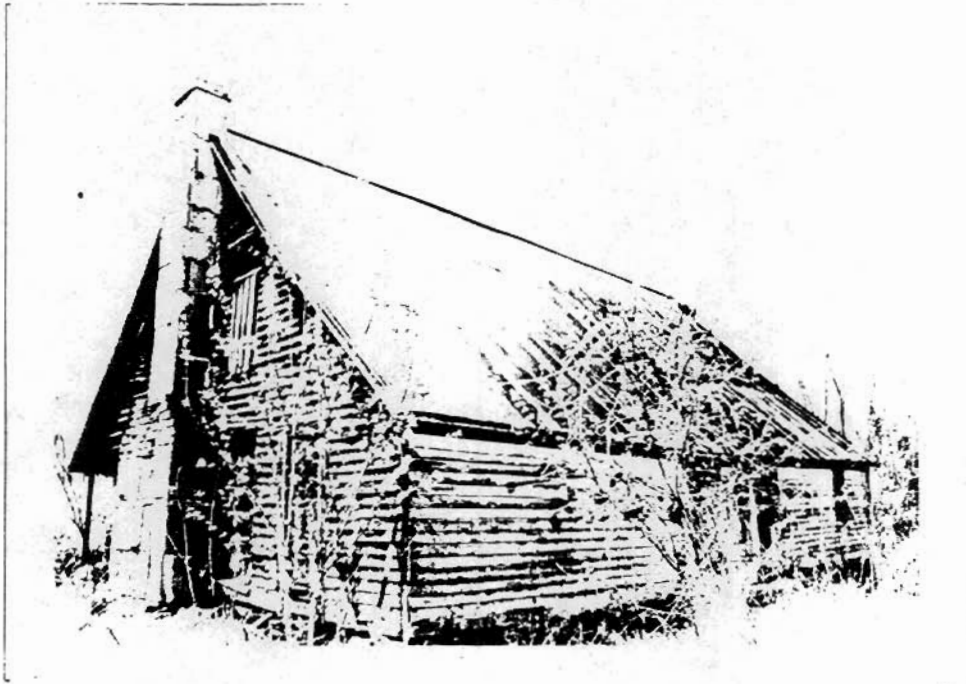


Historic Resources of Stone County  
Wesley Copeland House, ST-174  
Timbo vicinity  
Don Brown, photographer  
1983  
Negative on file at the AHPP  
Viewed from the south



RESOURCE PHOTOGRAPH SHEET

ARKANSAS  
HISTORIC  
PRESERVATION  
PROGRAM



Historic Resources of Stone County  
Wesley Copeland House, ST-174  
Timbo vicinity  
Don Brown, photographer  
1983  
Negative on file at the AHPP  
Viewed from the northeast



RESOURCE PHOTOGRAPH SHEET

ARKANSAS  
HISTORIC  
PRESERVATION  
PROGRAM



Historic Resources of Stone County  
Wesley Copeland House, ST-174  
Timbo vicinity  
Don Brown, photographer  
1983  
Negative on file at the AHPP  
Viewed from the southwest