

HISTORIC RESOURCES OF STONE COUNTY
STONE COUNTY, ARKANSAS

ARKANSAS HISTORIC PRESERVATION PROGRAM

Survey Number ST-170

Owner Mr. Everal Farris

Property Name Jim Morris Barn

Address Timbo, AR 72680

Location Timbo

Significant Date/s c.1900

ARCHITECTURAL DESCRIPTION

The Jim Morris Barn is located in the west Stone County town of Timbo. It is situated along Highway 66, the county's paved road running from Mountain View west to the county line. Resting on a continuous stone foundation, the two story frame barn is faced with board and batten and covered with a gambrel roof. The Morris Barn is built on a transverse crib plan. What is usually a wide central driveway in the plan was modified to a narrow walkway with the stalls on either side.

The principal (north) elevation's first story has a batten single leaf entrance into the central walkway. Above the door is a square opening. The batten doors on either side of the central door allow access into the stall areas. A segmental-shaped opening identifies the second story loft area. Above the opening is a bale carrier track sheltered by the overhang of the roof's ridge.

The rear (south) elevation has a large open shed attachment supported by log posts. A hay rack is beneath its roof, as are two large lattice gates. The gates allow animal access to the stall areas. A small square opening is set in an otherwise solid mass of the barn's gambrel end. Both the east and west elevations of the structure display solid board and batten masses.

STATEMENT OF SIGNIFICANCE

The Jim Morris Barn is a fine example of a specialized barn or stable constructed from the transverse crib plan. Most transverse crib barns in Stone County were multi-functional structures. The Morris Barn, built in 1900, stabled horses. Most uncommon was the modification to the transverse plan. The builder modified the central drive space into a walkway. The horses entered the stalls by way of the two large lattice gates to the rear of the barn.

Verbal Boundary Description: The nominated property, located within the NW $\frac{1}{4}$ of the SE $\frac{1}{4}$ of the NE $\frac{1}{4}$ of S12, R13W, T14N, is bounded on the north by Highway 66 and on the south, west and east by lines running parallel to and 50' from the three major facades of the barn.

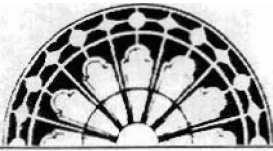
Acreage: less than 1
Quadrangle Name: Fox

Quadrangle Scale: 1:24000

UTM Reference:
Zone: 15

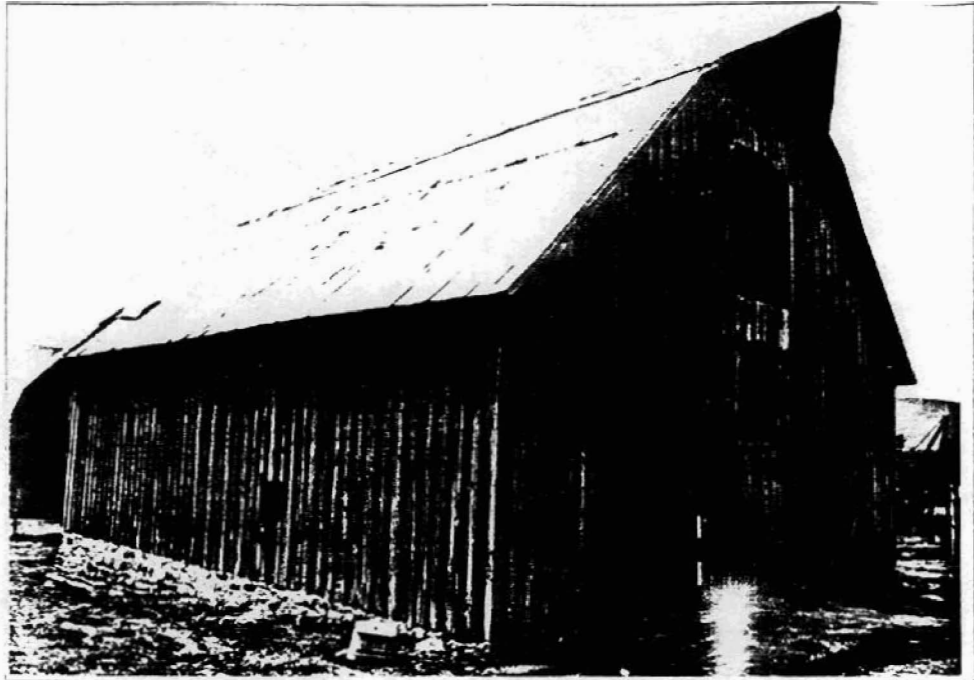
Easting: 562190

Northing: 3969400



RESOURCE PHOTOGRAPH SHEET

ARKANSAS
HISTORIC
PRESERVATION
PROGRAM



Historic Resources of Stone County

Jim Morris Barn; ST-170

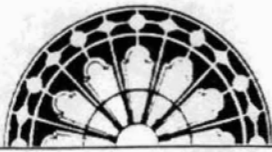
Timbo

Don Brown, photographer

1983

Negative on file at the AHPP

Viewed from the northeast



RESOURCE PHOTOGRAPH SHEET

ARKANSAS
HISTORIC
PRESERVATION
PROGRAM



Historic Resources of Stone County

Jim Morris Barn, ST-170

Timbo

Don Brown, photographer

1983

Negative on file at the AHPP

Viewed from the southeast