

HISTORIC RESOURCES OF STONE COUNTY
STONE COUNTY, ARKANSAS

ARKANSAS HISTORIC PRESERVATION PROGRAM

Survey Number ST-161

Owner Mrs. T.T. Foster

Property Name H. S. Mabry Barn

Address Route 74, Box 498

Location East Richwoods

Mountain View, AR 72560

Significant Date/s c.1922

ARCHITECTURAL DESCRIPTION

The H. S. Mabry Barn is located southeast of Mountain View in an area known as East Richwoods. Built c. 1922 by Albert Hubbler, the barn reflects an unusually large transverse crib plan with side sheds. Placed on a continuous stone foundation, the two story frame weatherboard barn is covered with a gable roof. Two elongated gable roof configurations, supported by short posts and located near the west end of the roof, cover vent openings along the roof's ridge line.

The first floor accommodates the farm animals with stalls positioned on either side of the central driveway. Each stall is equipped with a wood grain chute and trough. The open end shed areas to the north and south side of the main section provides additional cover space. The second story loft furnishes a large storage space. The second story also features feeding access to the stalls below. The rectangular bale openings in the floor and the wood chutes create a more efficient feeding process.

A pedimented gable end extension of the roof's ridge distinguishes the principal (east) elevation of the barn. The overhang provides shelter for the bale carrier and track. Underneath the overhang are two double door rectangular openings. These doors furnish access to the loft area. A four-over-four window is positioned to each side of the top door configuration while two door openings flank the second central opening. Directly below, a large rectangular opening with two wood gates provides entry to the central driveway. Gates to the two side sheds complete the front facade.

An open shed defines the south elevation of the structure. This space is created by the extension of the second story which is supported by ten rustic posts. Four horizontal boards with a cross vertical board are located between each post creating a side barrier. The second story elevation is marked by four doors symmetrically arranged on the elevation. The second shed area on the north elevation is also created by the continuation of the second floor. Supported by posts on a stone foundation the shed is enclosed with vertical board infilling. The small window openings are intermittently spaced in the vertical board side. Two door openings are placed in the east and west ends of the second floor wall.

The rear (west) elevation is similar to the principal facade. The ground is marked by the entrances into the central driveway and the shed wings. Above the central ground opening is a rectangular double door configuration with a single leaf door to each side of it. A paired window opening in the gable completes the elevation.

STATEMENT OF SIGNIFICANCE

The H. S. Mabry Barn is significant for its unusual massive scale and its display of exceptional workmanship on an ancillary structure not commonly found in Stone County. The use of weatherboard was not usually found on barns in the county up to this to this time. Built around 1922 by Albert Huebbler, a German craftsman, the barn housed H. S. Mabry's mule herd which he used for farming and in his stave mill operation.

Verbal Boundary Description: The nominated property, located within the SE $\frac{1}{4}$ of the SW $\frac{1}{4}$ of the NW $\frac{1}{4}$ of S25, R11W, T14N, is bounded on the south by an improved road and on the north, east and west by lines running parallel to and 100' from the three major facades of the barn.

Acreage: less than 1

Quadrangle Name: Mountain View

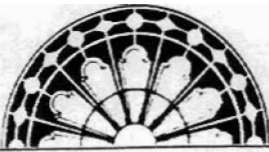
Quadrangle Scale: 1:24000

UTM Reference:

Zone: 15

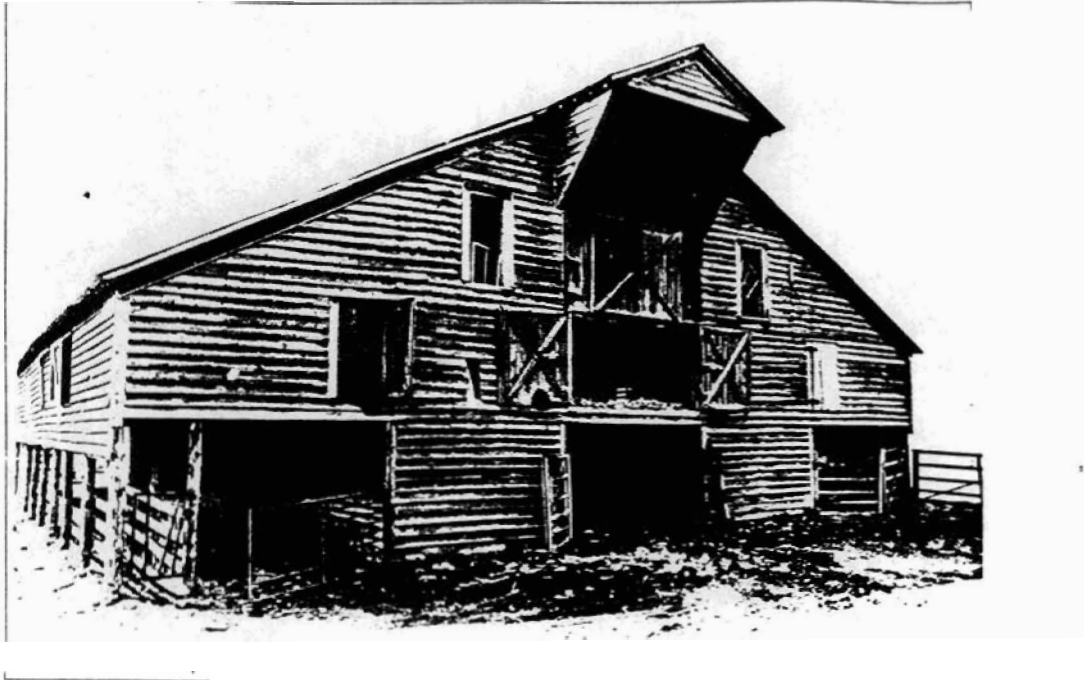
Easting: 579960

Northing: 3964110

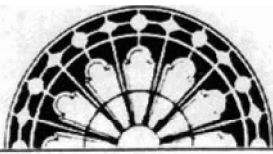


RESOURCE PHOTOGRAPH SHEET

ARKANSAS
HISTORIC
PRESERVATION
PROGRAM



Historic Resources of Stone County
H. S. Mabry Barn, ST-161
East Richwoods
Don Brown, photographer
1983
Negative on file at the AHPP
Viewed from the east



RESOURCE PHOTOGRAPH SHEET

ARKANSAS
HISTORIC
PRESERVATION
PROGRAM



Historic Resources of Stone County
H. S. Mabry Barn, ST-161
East Richwoods
Don Brown, photographer
1983
Negative on file at the AHPP
Viewed from the southwest