

HISTORIC RESOURCES OF STONE COUNTY
STONE COUNTY, ARKANSAS

ARKANSAS HISTORIC PRESERVATION PROGRAM

Survey Number ST-123

Owner Mrs. Marie Younger

Property Name Samuel Brown House

Address Route 70, Box 120

Location West Richwoods

Mountain View, AR 72560

Significant Date/s c.1848

ARCHITECTURAL DESCRIPTION

The Samuel Brown House is situated on a long lane off Highway 5 in the West Richwoods area, south of Mountain View. The c. 1848 Brown House reflects a weatherboard covered dogtrot or two pens with open hall plan. The log constructed house, facing west, sits on stone piers and is covered by a gable roof. The weatherboard which covers the structure is believed to have been applied prior to or soon after the Civil War.

A full length porch distinguishes the principal (west) elevation of the house. The porch roof, an extension of the gable roof slope, is supported by eight chamfered wood posts. Under the porch, the front wall is covered by flush board siding. Each pen is identified by a centered multi-panel wood door flanked by small six-over-six double-hung windows with wood louver shutters. A multi-light over wood panel door is centered in the enclosed open hall area.

The gable ends of the house represent the structure's north and south elevations. An exterior hewn stone chimney defines the north gable end. A small four pane window exists in the gable, east of the chimney's stack. A twentieth century rectangular room addition is attached to the gable end. The weatherboard structure has a gable roof and a front (west) shed addition. The room functions as a kitchen. Its twentieth century building materials are clearly differentiated from the original nineteenth century weatherboard of house's gable end. The south elevation exhibits paired six-over-six windows surrounded by simple drop siding. The gable still retains its original weatherboard and has a small four pane window placement.

The rear (east) elevation had a full length porch of the same configuration as on the principal elevation. The porch roof was also supported by eight chamfered posts. Today, about half of the original porch has been enclosed by simple drop board siding. The enclosure's fenestration consists of three-over-one double-hung windows with the upper sash being vertical in design. The original exterior flushboard siding is retained in the interior. Under the remaining rear open porch, the door and window arrangement and design of the front elevation are reiterated on the south pen.

The Samuel Brown smokehouse is situated a few feet south of the house. The log structure is the only surviving ancillary structure of the c. 1848 Samuel Brown Homestead. Its log walls are V-notched at the corners. The rectangular structure, placed on stone piers, features a overhanging gable roof. The overhang provides shelter for the batten door located in the north gable end.

STATEMENT OF SIGNIFICANCE

The Samuel Brown House is a prime resource representing the popular up-grading and refining of a log house in rural Arkansas to reflect the prosperity of its owner. The house was constructed circa 1848 by Samuel Brown, an immigrant farmer from North Carolina. Brown came to the county in 1840 and by 1847 had acquired significant amount of acreage. He increased his land holdings throughout the 1850's, and sought to make his house reflect his increasing prosperity. Brown covered the logs with weatherboard, added window shutters and multi-paneled doors, and remodeled the interior to include finely crafted fire mantels and handsome paneled wainscotting. The property also contains a single log crib smokehouse with an overhanging gable roof located in the traditional close proximity to the main house.

Verbal Boundary Description: The nominated property, located within the SE $\frac{1}{4}$ of the SE $\frac{1}{4}$ of the SE $\frac{1}{4}$ of S22, R11W, T14N, is bounded on the east by Sams Creek and on north, south and west by lines running parallel to and 100' from the three major facades of the House and to include the smokehouse

Acreage: less than 1

Quadrangle Name: Mountain View SW

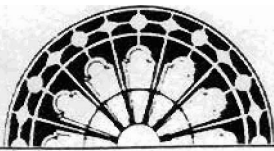
Quadrangle Scale: 1:24000

UTM Reference:

Zone: 15

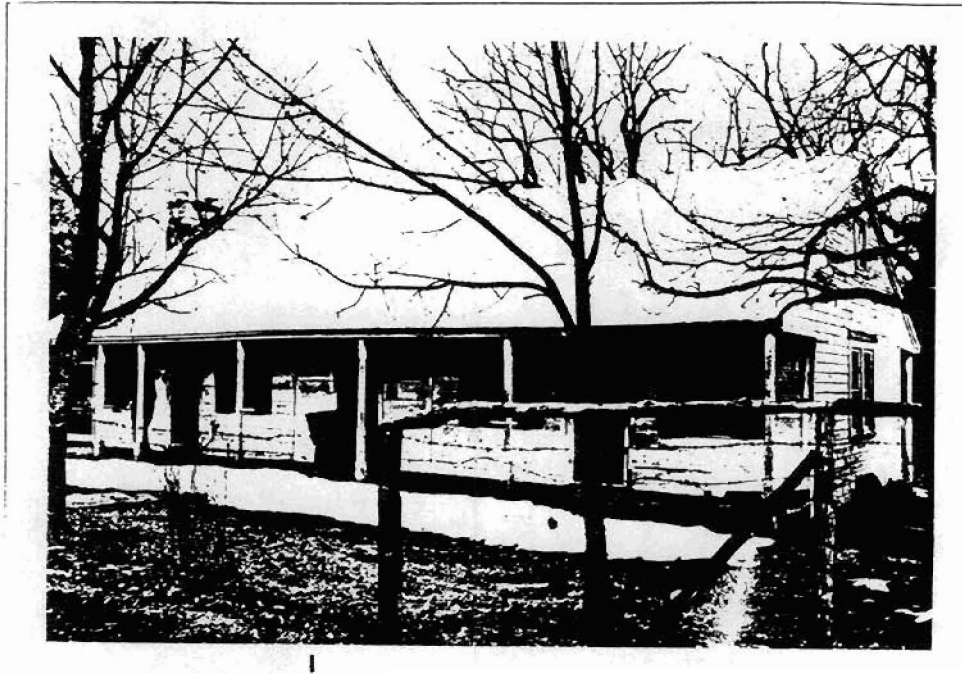
Easting: 577300•

Northing: 3965260

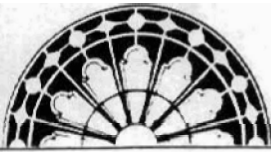


RESOURCE PHOTOGRAPH SHEET

ARKANSAS
HISTORIC
PRESERVATION
PROGRAM



Historic Resources of Stone County
Samuel Brown House, ST-123
West Richwoods
Don Brown, photographer
1983
Negative on file at the AHPP
Viewed from the west

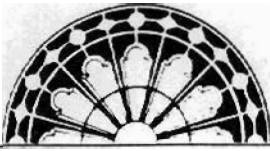


RESOURCE PHOTOGRAPH SHEET

ARKANSAS
HISTORIC
PRESERVATION
PROGRAM

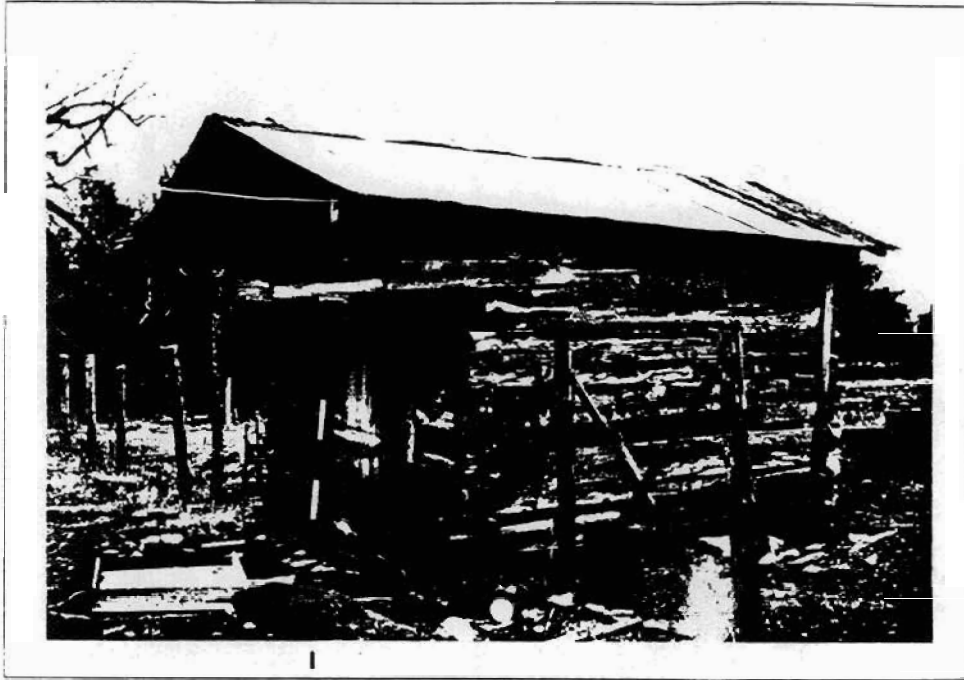


Historic Resources of Stone County
Samuel Brown House, ST-123
West Richwoods
Don Brown, photographer
1983
Negative on file at the AHPP
Viewed from the east



RESOURCE PHOTOGRAPH SHEET

ARKANSAS
HISTORIC
PRESERVATION
PROGRAM



Historic Resources of Stone County
Samuel Brown House (Smokehouse), ST-123
West Richwoods
Don Brown, photographer
1983
Negative on file at the AHPP
Viewed from the west