

HISTORIC RESOURCES OF STONE COUNTY
STONE COUNTY, ARKANSAS

ARKANSAS HISTORIC PRESERVATION PROGRAM

Survey Number ST-101

Owner Mr. Dan Kemp

Property Name C. L. Smith & Son
General Store

Address P.O. Box 329

Location Mountain View

Mountain View, AR 72560

Significant Date/s 1905

ARCHITECTURAL DESCRIPTION

C. L. Smith & Son General Store is located on the south corner site across from Mountain View's courthouse square. Constructed in 1905 by the Brewer Brothers, local masons, the store is a symmetrically massed load-bearing stone structure built on the standard rectangular commercial plan. The principal facade (north) exhibits a subtle Romanesque influence. Two large round arched window openings, articulated with voussiors, flank the central entry of like design creating a vernacular Romanesque impression. The building's dressed stone entablature, capped with stone coping completes the facade. The double doors and windows are not original to the building. The exposed east elevation is a solid mass of coursed rusticated native stone. The roof construction is flat with a parapet of descending steps along the east wall. •

STATEMENT OF SIGNIFICANCE

Built in 1905, one year after first stone building on the square, the C. L. Smith and Son General Store represents the first period of stone construction that developed on the square after 1904. Though traditional in plan, it represents an awareness of Romanesque style by the stone masons, the Brewer Brothers. This style influence is reflected in the stone work around the building's door and window openings.

Verbal Boundary Description: Lot 1, Block 7 of Brewer's Addition.

Acreage: less than 1

Quadrangle Name: Mountain View

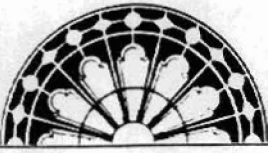
Quadrangle Scale: 1:24000

UTM Reference:

Zone: 15

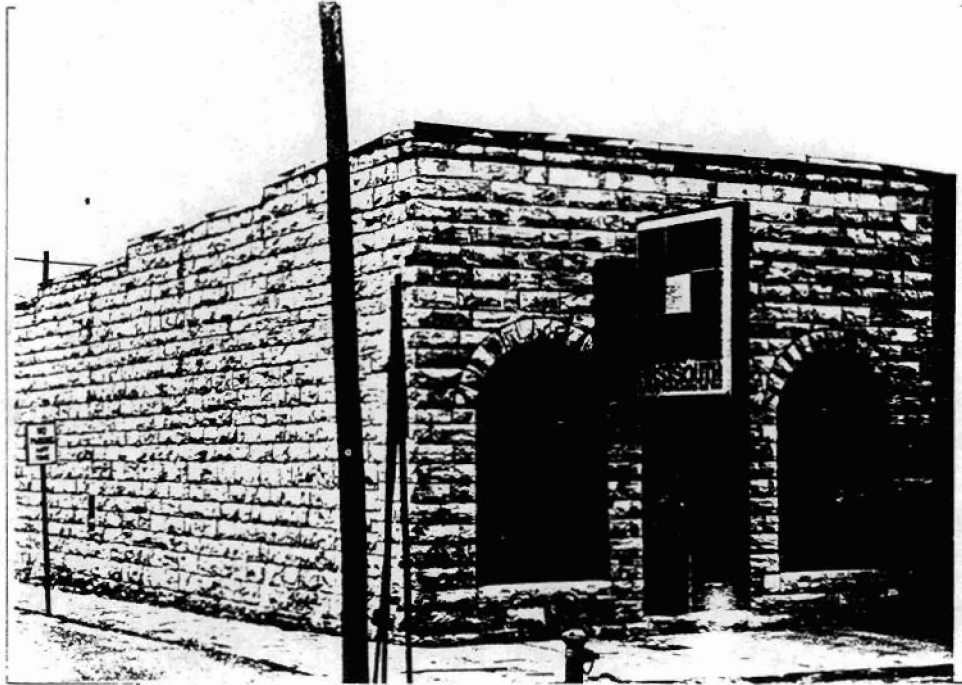
Easting: 579630

Northing: 3969500



RESOURCE PHOTOGRAPH SHEET

ARKANSAS
HISTORIC
PRESERVATION
PROGRAM



Historic Resources in Stone County
C. L. Smith & Son General Store, ST-101
Mountain View
Don Brown, photographer
1983
Negative on file at the AHPP
Viewed from the northeast