

HISTORIC RESOURCES OF STONE COUNTY
STONE COUNTY, ARKANSAS

ARKANSAS HISTORIC PRESERVATION PROGRAM

Survey Number ST-30

Owner Mr. & Mrs. Gerald Partee

Property Name H. J. Dougherty House

Address Marcella, AR 72555

Location Marcella

Significant Date/s c. 1905

ARCHITECTURAL DESCRIPTION

Situated along Highway 14, the H. J. Dougherty House is located in the southeastern Stone County community of Marcella. Built c. 1905, the Dougherty House is a one story dogtrot or two pens with open hall plan. The frame weatherboard house, facing east, sits on stone piers and is covered by an overhanging gable roof.

A full length porch distinguishes the principal (east) elevation of the house. The porch roof, an extension of the gable roof, is supported by six chamfered posts. Under the porch, the house facade consists of two pens flanking the weatherboard-enclosed hall. Two four-over-four double-hung windows within plain surrounds identify the pens and flank a central door, placed in the enclosure.

The gable ends of the house represent the structure's north and south elevations. A cut stone exterior chimney defines the north gable end. A four paneled wood door is positioned adjacent to the chimney firebox's west side. In the south elevation, a four-over-four double-hung window with plain surrounds is centered in the gable end mass.

The west (rear) elevation is distinguished by a weatherboard enclosed porch. A central door flanked by symmetrically placed single windows defines the west wall of the enclosed space. The north wall of the enclosed porch encompasses a four-over-four double-hung window. A four-light window is placed in its south end.

STATEMENT OF SIGNIFICANCE

The c. 1905 J. H. Dougherty House, built on a dogtrot or two pen with open hall, reflects the change in the dogtrot's facade during the twentieth century. The modification to the facade was the enclosing of the open hall. The most recognizable characteristic of this method is the center door placed in the enclosure. The central door becomes the principal entrance into the house. If neatly done, as with the Dougherty House, the house's enclosure with the central door can be mistaken for a central hall plan instead of the dogtrot.

Verbal Boundary Description: The nominated property, located within the NW¹/₄ of the NW¹/₄ of S6, R8W, T13N, is bounded on the east by Highway 14, and on the north, south and west by lines running parallel to and 50 ft. from the three elevations of the house.

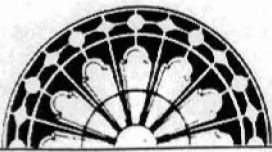
Acres: less than 1
Quadrangle Name: Marcella

Quadrangle Scale: 1:24000

UTM Reference:
Zone: 15

Easting: 600840

Northing: 3961250

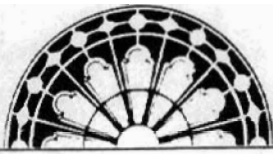


RESOURCE PHOTOGRAPH SHEET

ARKANSAS
HISTORIC
PRESERVATION
PROGRAM

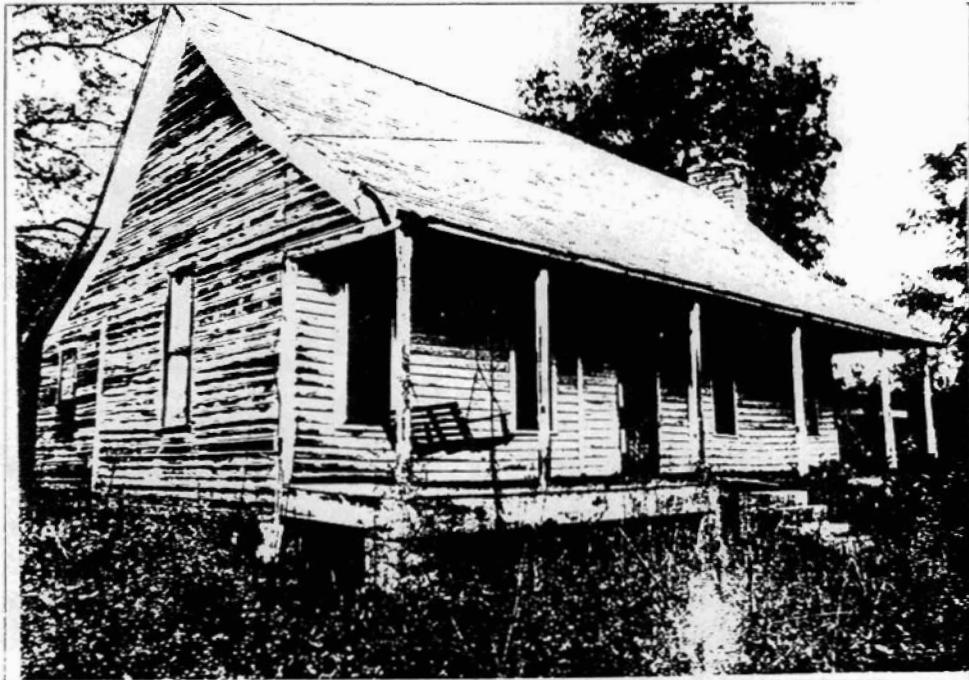


Historic Resources of Stone County
H. J. Dougherty House, ST-30
Marcella
Don Brown, photographer
1983
Negative on file at the AHPP
Viewed from the northeast

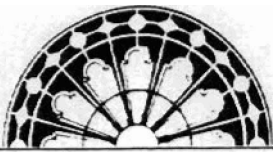


RESOURCE PHOTOGRAPH SHEET

ARKANSAS
HISTORIC
PRESERVATION
PROGRAM



Historic Resources of Stone County
H. J. Dougherty House, ST-30
Marcella
Don Brown, photographer
1983
Negative on file at the AHPP
Viewed from the southeast



RESOURCE PHOTOGRAPH SHEET

ARKANSAS
HISTORIC
PRESERVATION
PROGRAM



Historic Resources of Stone County

H. J. Dougherty House, ST-30

Marcella

Don Brown, photographer

1983

Negative on file at the AHPP

Viewed from the northwest