

HISTORIC RESOURCES OF STONE COUNTY  
STONE COUNTY, ARKANSAS

ARKANSAS HISTORIC PRESERVATION PROGRAM

Survey Number ST-3

Owner Mr. & Mrs. Dupree Fountain, et. al.

Property Name Walter Gray House

Address 8212 Luwanda St.

Location Melrose

Little Rock, AR 72205

Significant Date/s c.1910

ARCHITECTURAL DESCRIPTION

Located in the southeast portion of Stone County, the Walter Gray House stands approximately .5 mile south of Highway 14 which runs between Mountain View and Batesville, the government seat of Independence County. The house, oriented on a north-south axis, sits perpendicular to an unimproved road that leads into the foothills to the west. Built by Walter Gray in 1910, the house is a one story dogtrot with an original two room rear ell extending from the west end. The frame weatherboard house rests on a stone pier foundation and is covered with a cross gabled roof.

The principal elevation (north) presents a handsome symmetrically proportioned dogtrot facade dressed with a full-length hip-roofed porch, which is supported by chamfered posts. The balustrade reflects a local craftsman's design of alternating the lengths of the squared balusters with the taller members supporting the handrail. The open hall, which separates the two pens, allows access to each pen by way of wood paneled doors. Screened-in rectangular frames set on weatherboard bases partially enclosed the hallway, creating a single door opening. Each pen has two symmetrically arranged four-over-four double-hung windows within simple classical surrounds.

The west elevation consists of an exterior stone chimney and the west side of the rear ell. The chimney, located on the gable end of the west pen, is built of sawn cube-shaped stones. Laying the cubes on end presents a veneer surface not commonly used in the construction of chimneys in Stone County. The west fenestration is also made of four-over-four windows enclosed in simple classical facing. The secondary paneled wood door provides access to the kitchen in the ell.

The rear elevation (south) is dominated by the rear ell and a L-shaped porch. Although uncertain of the date, the porch was later enclosed with screen and wood. A single four-over-four window defines the ell's gable end as well as the east gable end of the dogtrot's east pen.

A stone ancillary structure, built in recent years, sits adjacent to the north-west corner of the front porch.

STATEMENT OF SIGNIFICANCE

The Walter Gray House, built in 1910, represents the continued use of the traditional house plans into the twentieth century. Constructed on a dogtrot or two pen with open hall, the house reflects the use of the rear ell in the original building plan. The survey showed the dogtrot to be one of two of the most popu-

lar houses types during this period in Stone County. Walter Gray was a successful farmer and businessman in the southeast part of the county.

Verbal Boundary Description: The nominated property, located within the NW<sup>1</sup>/<sub>4</sub> of the SW<sup>1</sup>/<sub>4</sub> of section 21, R8W, T13N, is bounded on the west by an improved road and on the north, south and east by lines running parallel to and 50 ft. from the three major facades of the house.

Acreage: less than 1  
Quadrangle Name: Concord

Quadrangle Scale: 1:24000

UTM Reference:  
Zone;15

Easting: 603900

Northing: 3955390



RESOURCE PHOTOGRAPH SHEET

ARKANSAS  
HISTORIC  
PRESERVATION  
PROGRAM

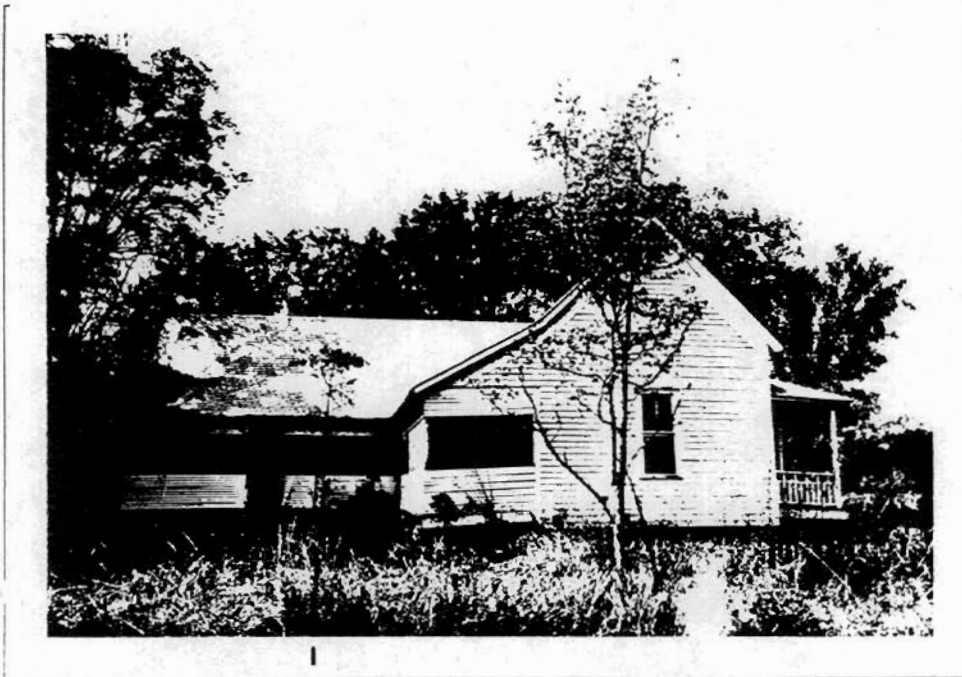


Historic Resources of Stone County  
Walter Gray House, ST-3  
Melrose  
Don Brown, photographer  
1983  
Negative on file at the AHPP  
Viewed from the north



## RESOURCE PHOTOGRAPH SHEET

ARKANSAS  
HISTORIC  
PRESERVATION  
PROGRAM



Historic Resources of Stone County  
Walter Gray House, ST-3  
Melrose  
Don Brown, photographer  
1983  
Negative on file at the AHPP  
Viewed from the east