

HISTORIC RESOURCES OF EVENING SHADE
FRANKLIN COUNTY, ARKANSAS

ARKANSAS HISTORIC PRESERVATION PROGRAM

Survey Number ES-3

Owner Mrs. Gertie Kissinger

Property Name Stokes House

Address Cammack Street

Location Cammack Street, Evening Shade

Evening Shade, AR 72532

Significant Date/s 1882

ARCHITECTURAL DESCRIPTION

The Stokes House, constructed in 1882, is located on a large lot facing west on Cammack Street. The Stokes House is a two-story gable-roofed structure with a one-story gable-roofed ell on the north side of the rear elevation and a one-story shed roofed addition covering the remainder of the rear elevation.

A two-story porch with paired turned posts supporting a flat roof distinguish the front facade. Rows of turned posts with decorative jig saw cut brackets and a spindled frieze enrich the design of the entire porch. Balustrades on each floor are composed of simple square posts.

On each floor, centrally located doorways offer access from the porch into the house. The first floor entrance contains a single door flanked by single pane sidelights and a light transom. The second floor doorway is similarly articulated with the exception of the transom. Two pairs of six-over-six double-hung windows flank both doorways.

The north gable end contains an exterior brick chimney flanked by two six-over-six windows on each floor and features gable end returns. The south gable end is similarly detailed with no windows on the west side of the chimney.

STATEMENT OF SIGNIFICANCE

The Stokes House is significant to the architectural character of Evening Shade. The house was constructed ca. 1880 by Dudley Williams and later owned by the Stokes family. The construction of the Stokes House is reflective of the growth and prosperity of Evening Shade in the late nineteenth century. **Virtually unaltered**, the Stokes House's finely crafted porch presents an excellent example of the impact and interpretation of the Queen Anne style on the traditional vernacular building types in Evening Shade.

Verbal Boundary Description 3-16-6, Town Lots: north part of 45 & north part of 46

Acreage less than one acre

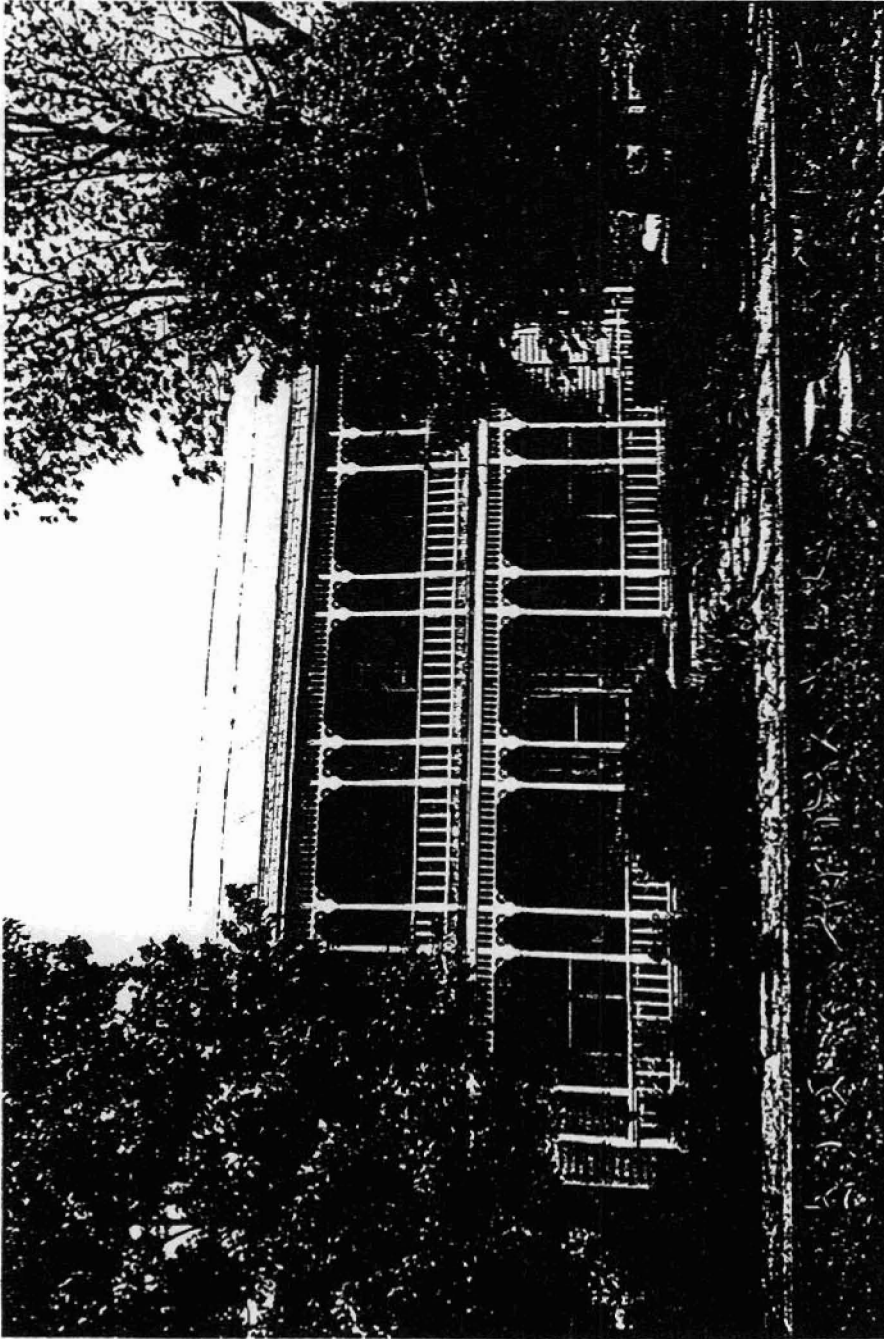
Quadrangle Name Evening Shade

Quadrangle Scale 1:24000

UTM Reference

15 Easting 624385 Northing 3992490

SH100/18



ES-3
Stokes House
Bob Dunn, Photographer
May, 1981
Negative at the Ark. Hist. Pres. Program
West elevation
No. 4 of 16