

SH0013

HISTORIC RESOURCES OF EVENING SHADE
SHARP COUNTY, ARKANSAS

ARKANSAS HISTORIC PRESERVATION PROGRAM

Survey Number ES-9

Owner C.A. Thomas

Property Name Coger House

Address Main Street

Location Main Street, Evening Shade

Evening Shade, AR 72532

Significant Date/s ca. 1870

ARCHITECTURAL DESCRIPTION

Located on a spacious lot facing Main Street, the Coger House is a two-story rectangular wood frame gable-roofed structure, built ca. 1870. An original one-story frame shed-roofed addition runs the full length of the rear (south) elevation and a one-story frame gable-roofed ell projection southward from the shed roofed addition.

The front (north) facade is distinguished by a two-story flat roofed porch. The cut sandstone foundation wall and first floor wrought iron posts are Twentieth century additions. The second floor of the porch features turned posts and jigsaw cut brackets with spindles. Turned posts also compose the balustrade. This porch is a late-nineteenth-century addition which replaced the structure's original Greek Revival influenced porch. First and second floor entrances, on center axis, are covered by the porch. The first floor entry is composed of a single door (originally double-doors) flanked by four light windows and a ten light transom. The second story entry contains double doors flanked by sidelights of three panes over wood panels. The first floor entry is flanked by two two-over-two double-hung windows, the second floor entry by two six-over-six double-hung windows.

The west gable end contains returns and an exterior brick chimney flanked by two six-over-six windows on each floor. The east gable end contains returns, two six-over-six windows on each floor and an interior brick flue. The shed roofed addition has one window in the east elevation.

The interior is composed of a central hall flanked by two rooms on each floor. All rooms contain horizontal boards covered with wallpaper, wood floors and plain window and door facings. The east room on the second floor has a beaded wood ceiling.

STATEMENT OF SIGNIFICANCE

The Coger House is architecturally significant in the built environment of Evening Shade. It was constructed ca. 1870 by Polk Jones and later acquired by Claude T. Coger, long-time owner of the Sharp County Record. The Coger House, originally Greek Revival influenced, is a vernacular structure illustrating the influence of the Victorian styles popular during Evening Shade's era of greatest prosperity. Located on Main Street one block west of the commercial area, the Coger House contributes greatly to the late-nineteenth-century physical character of Evening Shade.

Roll # 17: 17-19

SH0013

HISTORIC RESOURCES OF EVENING SHADE
'ARP COUNTY, ARKANSAS

ARKANSAS HISTORIC PRESERVATION PROGRAM

Survey Number ES-9
Property Name Coger House
page 2

Verbal Boundary Description 3-16-6, Town Lots: south part of 47 and all of 48

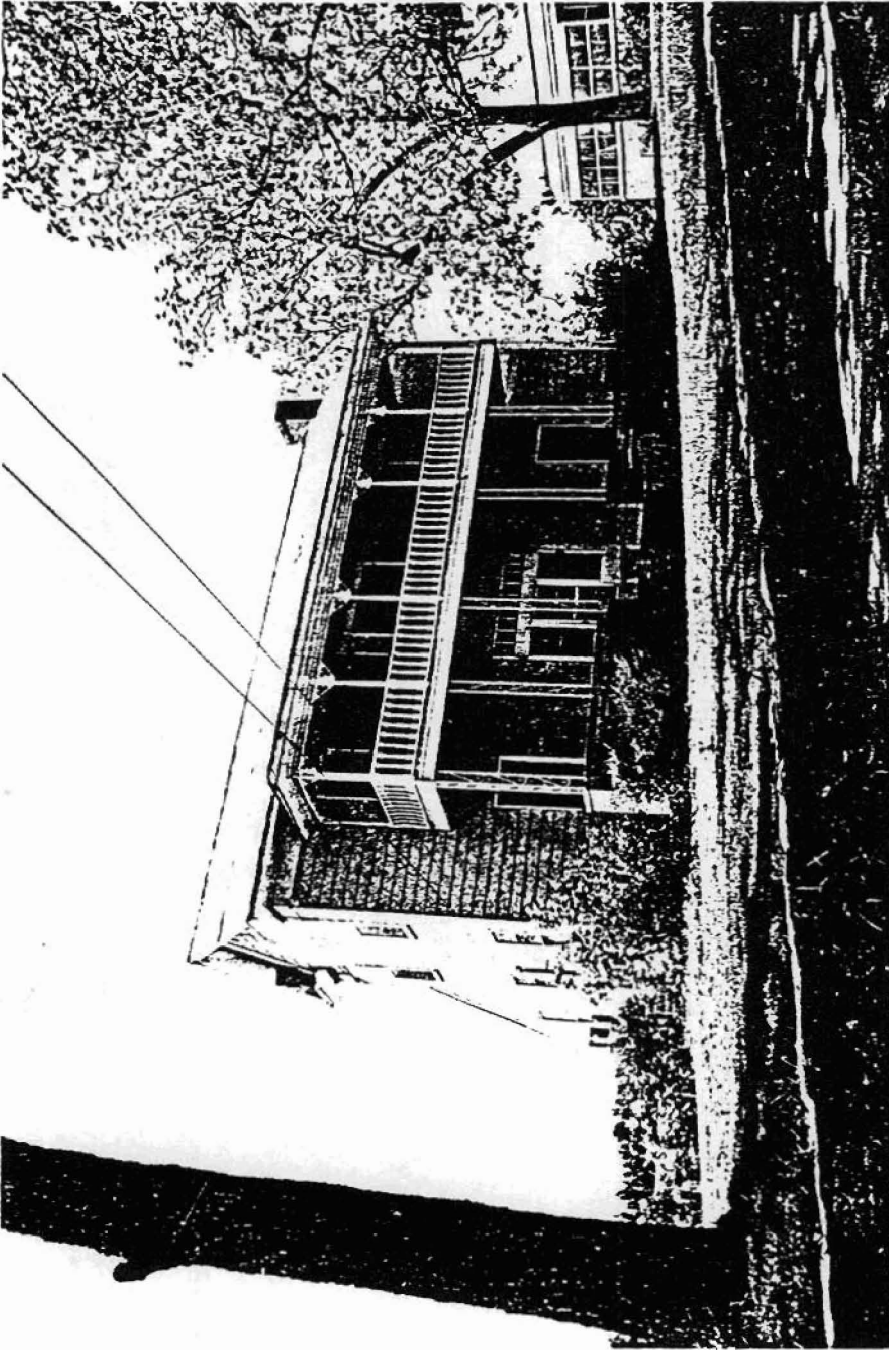
Acreage less than one

Quadrangle Name Evening Shade Quadrangle Scale 1:24000

UTM Reference

Zone 15 Easting 624300 Northing 3992530

SH003



ES-9
Coger House
Bob Dunn, Photographer May, 1981
Negative at the Ark. Hist. Pres. Program
View from the northeast
No. 10 of 16