

SH0012

HISTORIC RESOURCES OF EVENING SHADE  
SHARP COUNTY, ARKANSAS

ARKANSAS HISTORIC PRESERVATION PROGRAM

Key Number ES-10

Owner Vernon Houtz

Property Name W. A. Edwards House

Address Main Street

Location Main Street, Evening Shade

Evening Shade, AR 72532

Significant Date/s ca. 1890

ARCHITECTURAL DESCRIPTION

The W. A. Edwards House, ca. 1890, is a one and one-half story wood frame structure with a gable roof. The front (north) facade contains two gable dormers with two-over-two double-hung windows. A cross gabled ell on the west side of the front elevation contains a bay window of two-over-two double-hung windows and decorative wood shingles. A single door flanked by sidelights of two panes and capped by a two light transom compose the main entry. To the east of the entry are two two-over-two double-hung windows. A porch consisting of turned posts, originally resting on lattice work, are supported by a sandstone wall. This porch covers two-thirds of the front and east facades. An ell on the rear elevation contains two gabled dormers with two-over-two double-hung windows and decorative wood shingles.

STATEMENT OF SIGNIFICANCE

W. A. Edwards House is significant to the architectural character of Evening Shade. The house was built ca. 1890 by William A. Edwards, a prominent merchant. His house is one of few constructed in Evening Shade ca. 1890. With its cross gabled ells and bay window, the W. A. Edwards House displays a unique character within Evening Shade.

Verbal Boundary Description 3-16-6, part of the northwest quarter of the northwest quarter

Quadrangle Name Evening Shade

Quadrangle Scale 1:24000

Acreage 2.0 acres

UTM Reference

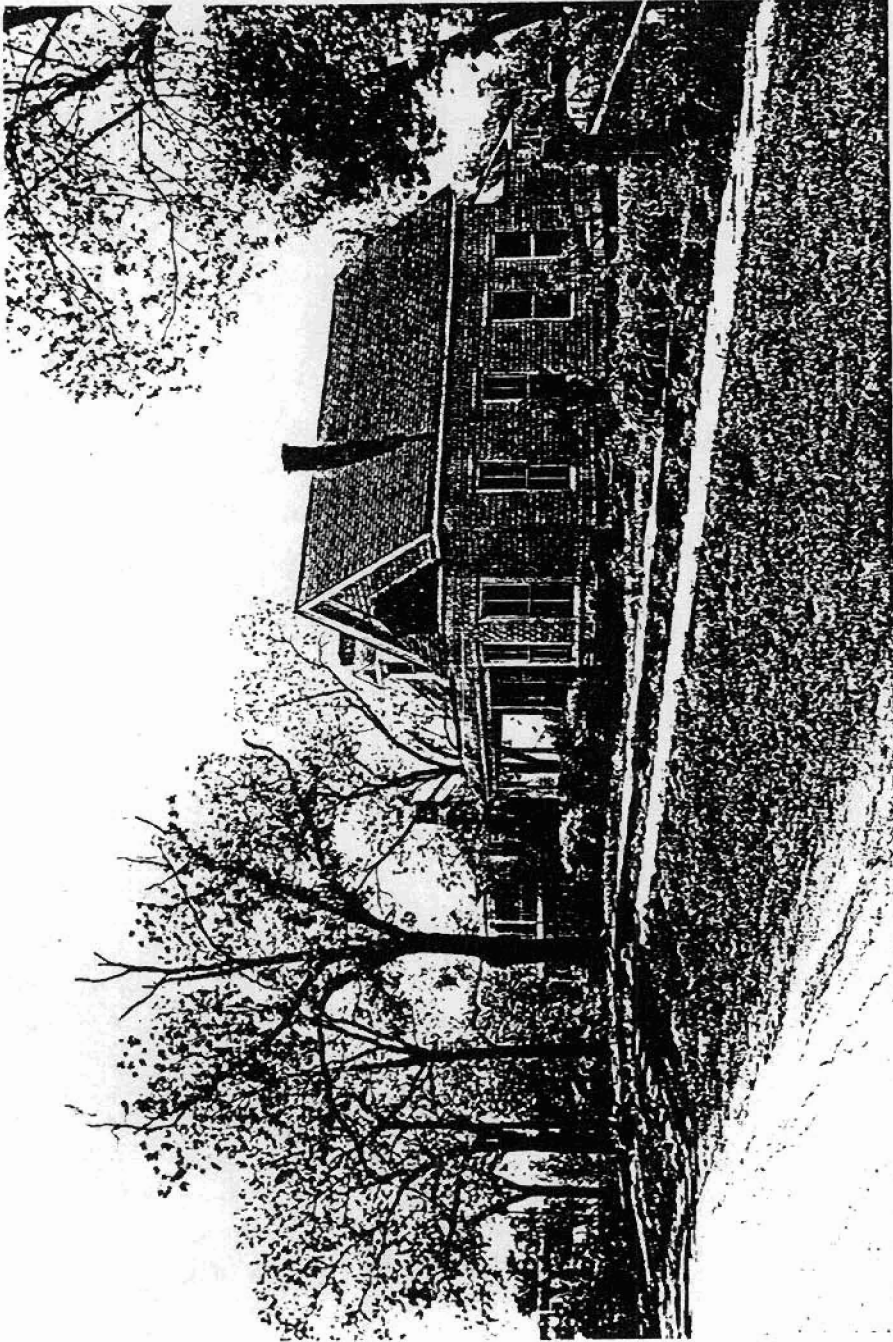
Zone 15 Easting 624260 Northing 3992525

Roll #

18:06-10

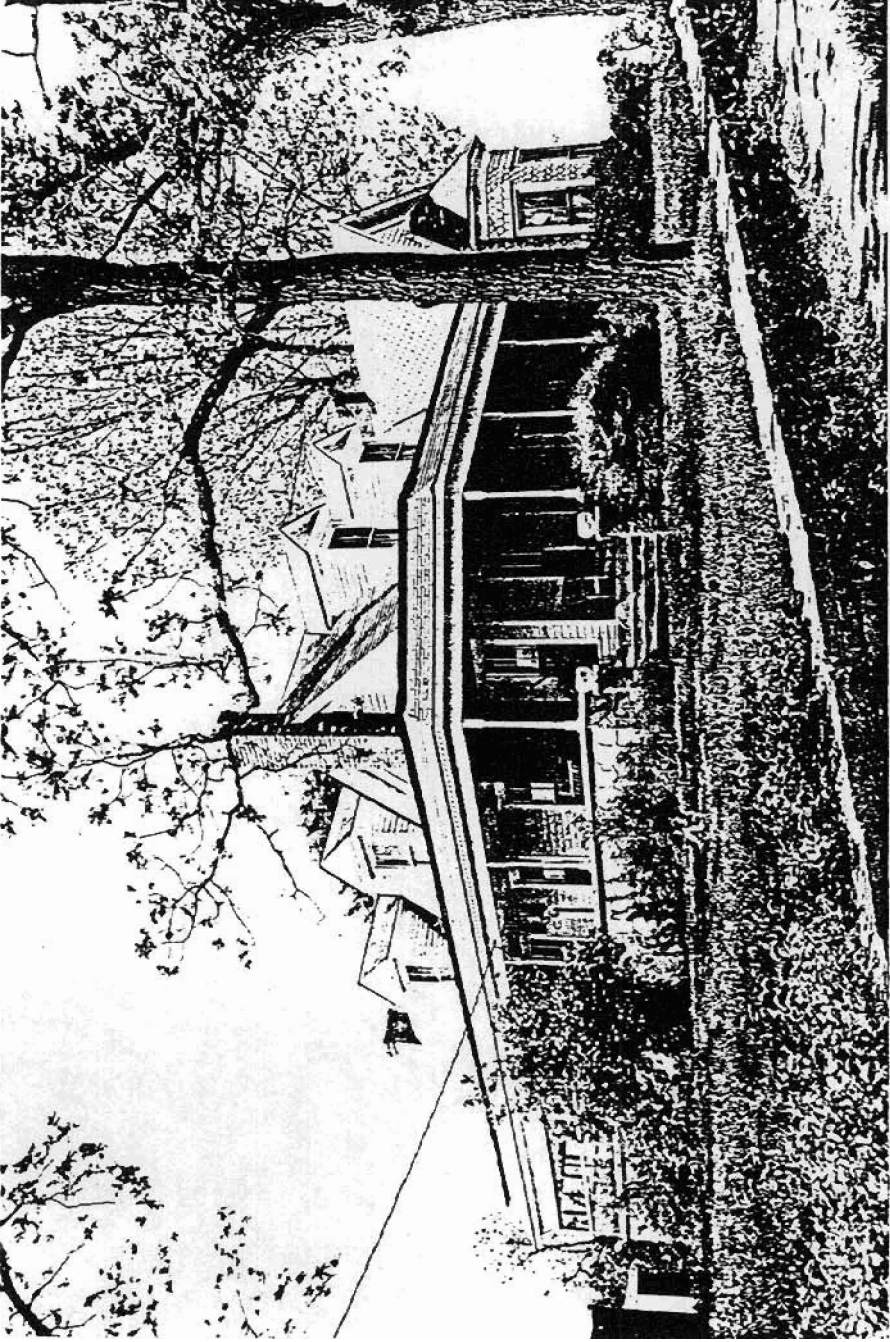
18:12-00

SH10012



ES-9 & 10  
Coger House & W. A. Edwards House  
Bob Dunn, Photographer  
May, 1981  
Negative at the Ark. Hist. Pres. Program  
View from the west  
No. 12 of 16

540012



ES-10  
W. A. Edwards House  
Bob Dunn, Photographer May, 1981  
Negative at the Ark. Hist. Pres. Program  
View from the northeast  
No. 11 of 16