

NR listed 8/18/93

United States Department of the Interior  
National Park Service

NATIONAL REGISTER OF HISTORIC PLACES  
REGISTRATION FORM

=====

1. Name of Property

=====

historic name: Hatchett, Columbus, House

other name/site number: SE 0255

=====

2. Location

=====

street & number: Northern corner of Main & Hazel Streets.

not for publication: N/A

city/town: Leslie

vicinity: N/A

state: AR

county: Searcy

code: AR 129

zip code: 72645

=====

3. Classification

=====

Ownership of Property: Private

Category of Property: Building

Number of Resources within Property:

Contributing	Noncontributing	
<u>2</u>	<u>      </u>	buildings
<u>2</u>	<u>      </u>	sites
<u>2</u>	<u>      </u>	structures
<u>4</u>	<u>      </u>	objects
<u>4</u>	<u>0</u>	Total

Number of contributing resources previously listed in the National Register: N/A

Name of related multiple property listing: Historic and Architectural Resources of Searcy County, Arkansas

=====  
**4. State/Federal Agency Certification**  
=====

As the designated authority under the National Historic Preservation Act of 1986, as amended, I hereby certify that this X nomination \_\_\_\_\_ request for determination of eligibility meets the documentation standards for registering properties in the National Register of Historic Places and meets the procedural and professional requirements set forth in 36 CFR Part 60. In my opinion, the property X meets \_\_\_\_\_ does not meet the National Register Criteria. \_\_\_\_\_ See continuation sheet.

Cathryn Bradford Slater \_\_\_\_\_ 6-7-93  
Signature of certifying official Date

Arkansas Historic Preservation Program  
State or Federal agency and bureau

In my opinion, the property \_\_\_\_\_ meets \_\_\_\_\_ does not meet the National Register criteria. \_\_\_\_\_ See continuation sheet.

\_\_\_\_\_  
Signature of commenting or other official Date

\_\_\_\_\_  
State or Federal agency and bureau

=====  
**5. National Park Service Certification**  
=====

I, hereby certify that this property is:

- \_\_\_\_\_ entered in the National Register \_\_\_\_\_  
\_\_\_\_\_ See continuation sheet.
- \_\_\_\_\_ determined eligible for the \_\_\_\_\_  
National Register \_\_\_\_\_  
\_\_\_\_\_ See continuation sheet.
- \_\_\_\_\_ determined not eligible for the \_\_\_\_\_  
National Register \_\_\_\_\_
- \_\_\_\_\_ removed from the National Register \_\_\_\_\_
- \_\_\_\_\_ other (explain): \_\_\_\_\_

\_\_\_\_\_  
Signature of Keeper Date  
of Action

=====  
**6. Function or Use**  
=====

Historic: Domestic Sub: single family dwelling  
\_\_\_\_\_  
Current : Domestic Sub: single family dwelling  
\_\_\_\_\_  
\_\_\_\_\_

=====

**7. Description**

=====

Architectural Classification:

Colonial Revival

\_\_\_\_\_

\_\_\_\_\_

Other Description: N/A

Materials: foundation concrete roof metal  
walls concrete other wood

Describe present and historic physical appearance. X See continuation sheet.

=====

**8. Statement of Significance**

=====

Certifying official has considered the significance of this property in relation to other properties: local.

Applicable National Register Criteria: C

Criteria Considerations (Exceptions): N/A

Areas of Significance: Architecture

\_\_\_\_\_

\_\_\_\_\_

\_\_\_\_\_

\_\_\_\_\_

Period(s) of Significance: c. 1910

Significant Dates: N/A

Significant Person(s): N/A

\_\_\_\_\_

Cultural Affiliation: N/A

Architect/Builder: Hatchett, Columbus  
Shannon, M.  
Hardin, Bob

State significance of property, and justify criteria, criteria considerations, and areas and periods of significance noted above.  
X See continuation sheet.

=====

**9. Major Bibliographical References**

=====

See "Historic and Architectural Resources of Searcy County, Arkansas, Section H.

\_\_\_ See continuation sheet.

Previous documentation on file (NPS):

- preliminary determination of individual listing (36 CFR 67) has been requested.
- previously listed in the National Register
- previously determined eligible by the National Register
- designated a National Historic Landmark
- recorded by Historic American Buildings Survey # \_\_\_\_\_
- recorded by Historic American Engineering Record # \_\_\_\_\_

Primary Location of Additional Data:

- State historic preservation office
- Other state agency
- Federal agency
- Local government
- University
- Other -- Specify Repository: \_\_\_\_\_

=====

**10. Geographical Data**

=====

Acreage of Property: Less than one

UTM References: Zone Easting Northing    Zone Easting Northing

A	<u>15</u>	<u>540000</u>	<u>3964730</u>	B	___	_____	_____
C	___	_____	_____	D	___	_____	_____

\_\_\_ See continuation sheet.

Verbal Boundary Description: \_\_\_ See continuation sheet.

Beginning at the northern corner of Main and Hazel Streets, proceed northeast along the curblineline of Hazel St. to a point formed by the intersection of said line and a line formed by the rear elevation of the smokehouse. Then proceed northwest along this line to a point formed by the intersection with a line formed by, yet 10 ft. from, the northwestern elevation of the house. Then proceed southwest along this line to the intersection with the Main St. curblineline. Then proceed southeast along the curblineline to the point of beginning.

Boundary Justification: \_\_\_ See continuation sheet.

This boundary includes all of the property historically associated with the resource that retains its integrity, including the house, smokehouse, and two retaining walls.

=====

**11. Form Prepared By**

=====

Name/Title: Patrick Zollner, National Register Historian

Organization: Arkansas Historic Preservation Program Date: 04/28/93

Street & Number: 323 Center, 1600 Tower Bldg. Telephone: (501) 324-9880

City or Town: Little Rock State: AR ZIP: 72201

United States Department of the Interior  
National Park Service

## National Register of Historic Places Continuation Sheet

Section number 7 Page 1

---

### Summary

Located at the northern corner of Main and Hazel Streets in Leslie, the Columbus Hatchett House is a large two-story residence constructed c. 1910 in a vernacular interpretation of the Colonial Revival style. The house features decorative detail in the egg-and-dart molding above the window lintels, the rough-cut molded concrete quoins, and the ornate Palladian-type windows in the four projecting gable ends. There is one contributing outbuilding. The Columbus Hatchett House is in excellent condition.

### Elaboration

Located at the northern corner of Main and Hazel Streets in Leslie, the Columbus Hatchett House is a large two-story residence constructed c. 1910 in a vernacular interpretation of the Colonial Revival style. The structure is constructed of rusticated concrete blocks with quoins formed by concrete blocks molded to resemble rough-cut stone. A continuous poured-concrete foundation supports the irregular plan which is covered by a cross-gable roof with a hipped-roof section integrated into the southeast elevation. The roof is clad with silver metal shingles. There is one interior and one exterior brick chimney.

The front, or southwestern, elevation is dominated by the central, two-story gable-roof projection and the full-facade, single-story porch. The hipped-roof porch also projects to accommodate the central bay and is supported by nine white-painted, non-fluted columns on attic bases. Originally, the columns featured clay Ionic capitals, however, only one survives today. Underneath the porch, there are two asymmetrically placed single-leaf doors with transoms (one in the projecting bay) and three large windows with multiple-pane, leaded-glass upper sashes (one of which is in the projecting bay). The second story of the projecting-gable bay has a flat-decked landing on top of the first-story porch that is defined by a turned-spindle balustrade. Directly above its first-story counterpart, a similar single-leaf door (though with a smaller transom) opens onto the deck. The bay is also fenestrated by a one-over-one double-hung window. Two identical one-over-one windows are symmetrically placed in the two flanking walls. Although all of the windows feature substantial concrete sills and lintels, the front and side elevation windows can also boast of ornate egg-and-dart molding across the top of the lintels.

An unusual metal boxed cornice, which appears to be original, encircles the house. At each of the four projecting gable ends, the cornice returns are curved for a decorative effect. These gable ends are filled with light-pink colored brick which contrasts with the brown-colored concrete. Each gable end is adorned with an impressive and ornate Palladian-type window.

United States Department of the Interior  
National Park ServiceNational Register of Historic Places  
Continuation SheetSection number 7 Page 2

All are in good condition with the exception of the northwestern bay window which is currently boarded over and painted white.

The northwestern bay is fenestrated by a leaded-glass type window on the first story and a conventional one-over-one window directly above on the second story. The square exterior brick chimney is located behind the rear corner of this bay.

On the rear, or northeastern, elevation a single-story, novelty sided, shed-roof addition is placed within the northeastern valley created by the side and rear projecting gables. This addition contains a single-leaf entrance and three small four-pane stationary windows. The two side walls of the projecting gables are fenestrated by three one-over-one double-hung windows. The central projecting gable bay on the rear elevation contains a single one-over-one double-hung window on each story. A historic second-story shed-roof addition is attached to the rear of the integral hipped-roof section within the valley on the southeastern elevation. Supported by simple wood posts, this novelty sided addition has an inset porch with a balustrade and two turned-spindle posts adorned with delicate brackets. This porch is accessed by a concrete and wood stairway with a modern concrete-block constructed landing at the halfway point. Underneath this addition, there is a single-leaf door with transom and a one-over-one window.

Fenestration for the southeastern elevation is composed of a one-over-one window symmetrically placed on each story of the hipped-roof section and a group of three narrow one-over-one windows on the first story of the projecting gable end with two conventional-size one-over-one windows on the second story.

The interior was not accessible.

There is one contributing outbuilding on the property. A small weatherboard-clad, gable-roof smokehouse is located at the rear (behind the eastern corner) of the house. There are also two historic retaining walls on the property that contribute to the nomination. A substantial fieldstone retaining wall, with a set of seven concrete stairs leading to the sidewalk, parallels the street in front of the house. At the rear of the house, a shorter concrete retaining wall is situated directly underneath, and to either side of, the front elevation of the smokehouse.

The Columbus Hatchett House is in excellent condition.

United States Department of the Interior  
National Park Service

## National Register of Historic Places Continuation Sheet

Section number 8 Page 1

---

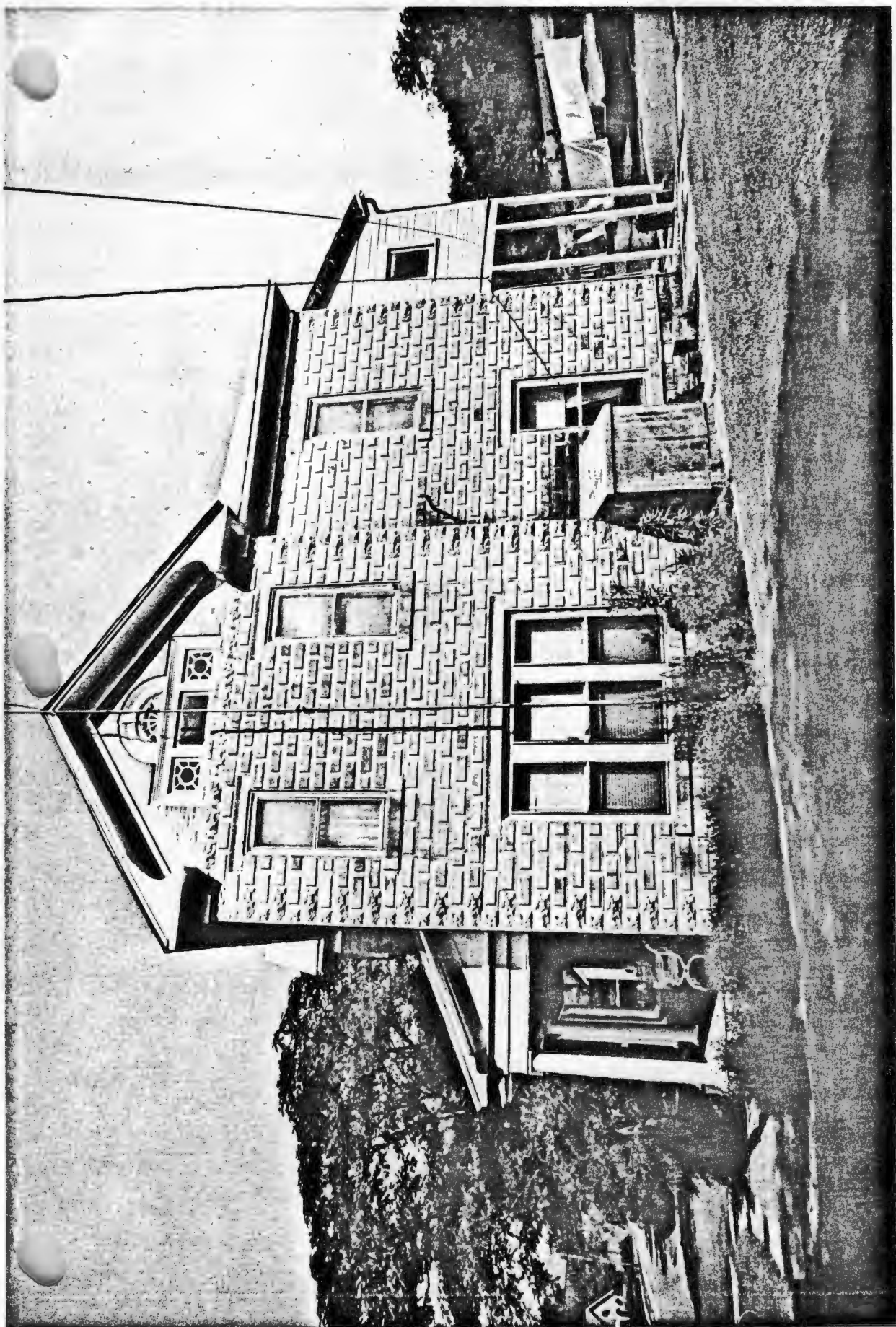
### Significance

The Columbus Hatchett House was constructed c. 1910 by Columbus Hatchett and M. Shannon with concrete blocks fashioned by Bob Hardin. When completed, Columbus Hatchett's new home was undoubtedly the finest expression of Colonial Revival architecture in Leslie. The use of Tuscan porch columns, quoins, and ornate Palladian-type windows in the gable ends are typical Colonial Revival details, while other ornamentation, such as the egg-and-dart molding above the window lintels, the turned-spindle balustrades, and the cast concrete blocks, are more reflective of the aesthetic tastes and skills of the local builders. As such, the Columbus Hatchett House is eligible under Criterion C with local significance.

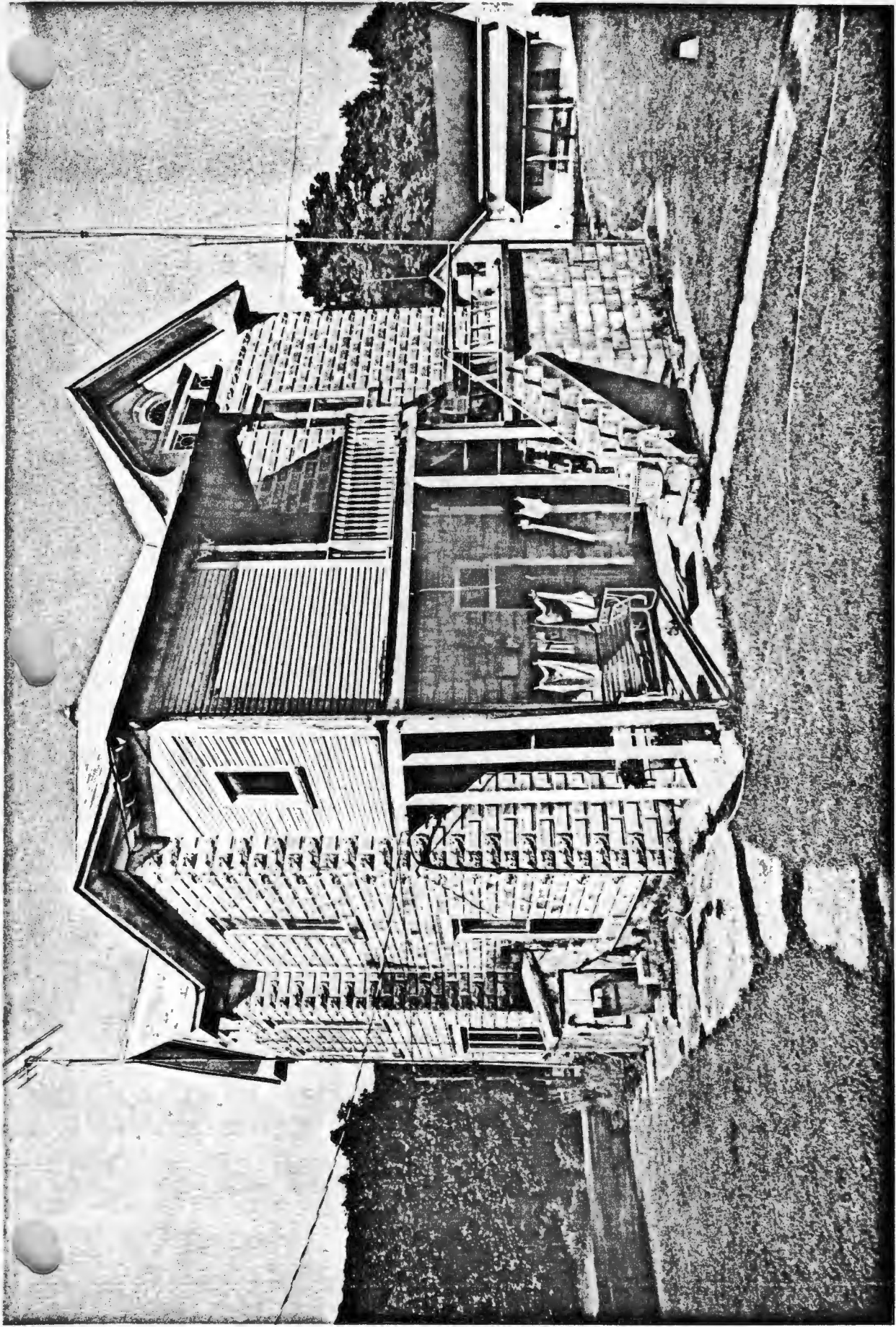




Columbus Hatchett House  
Searcy Co., Arkansas  
Photograph by Todd Ferguson  
August 1991  
Negative on file at AHP  
View of the front, or southwestern,  
elevation



Columbus Hetchett House  
Sevier Co., Arkansas  
Photograph by Todd Ferguson  
August 1991  
Negative on file at AHP  
View of the southeastern elevation

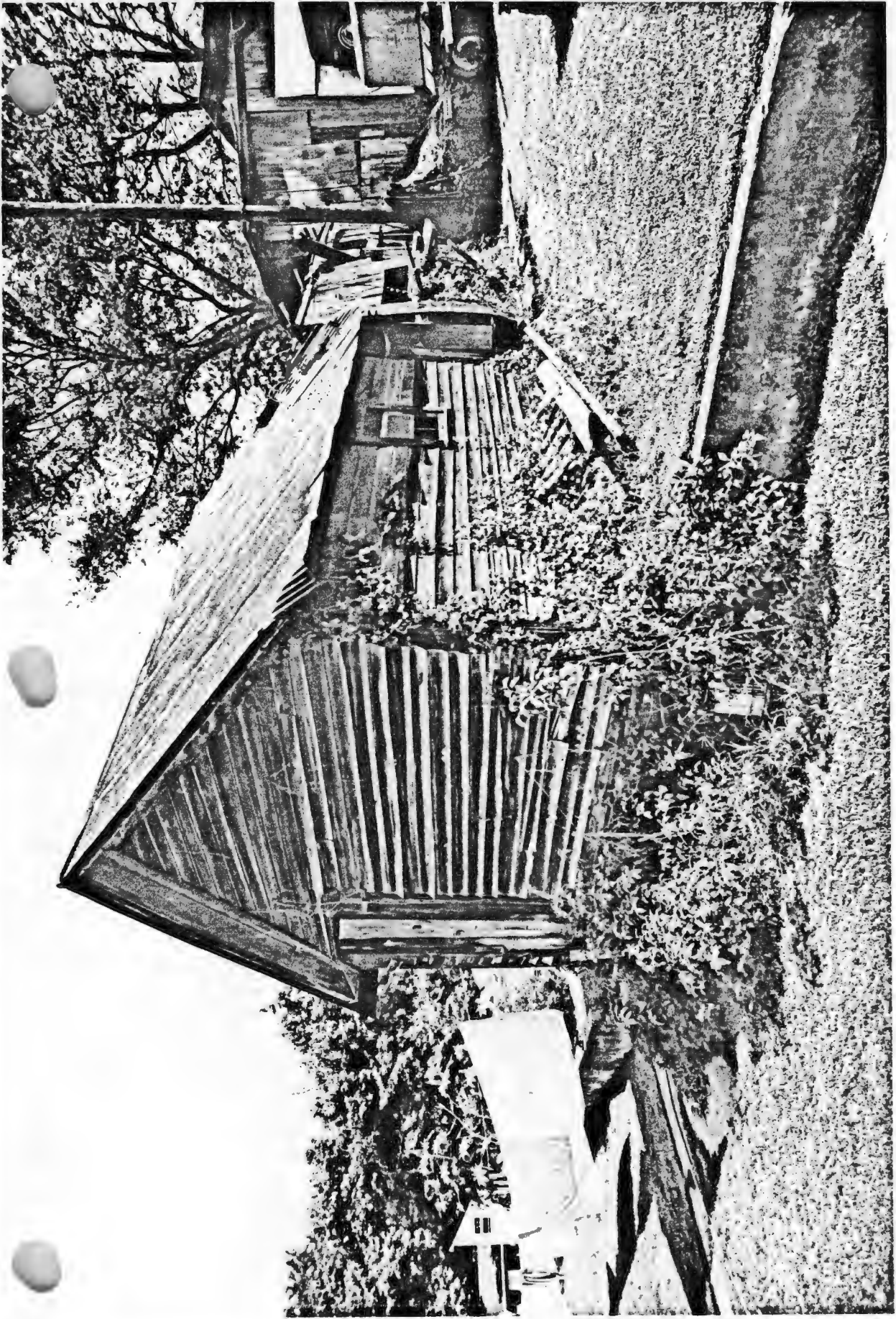


Columbus Hatchett House  
Searcy Co., Arkansas  
Photograph by Todd Ferguson  
August 1991  
Negative on file at AHP  
View of the rear, or northeastern,  
elevation

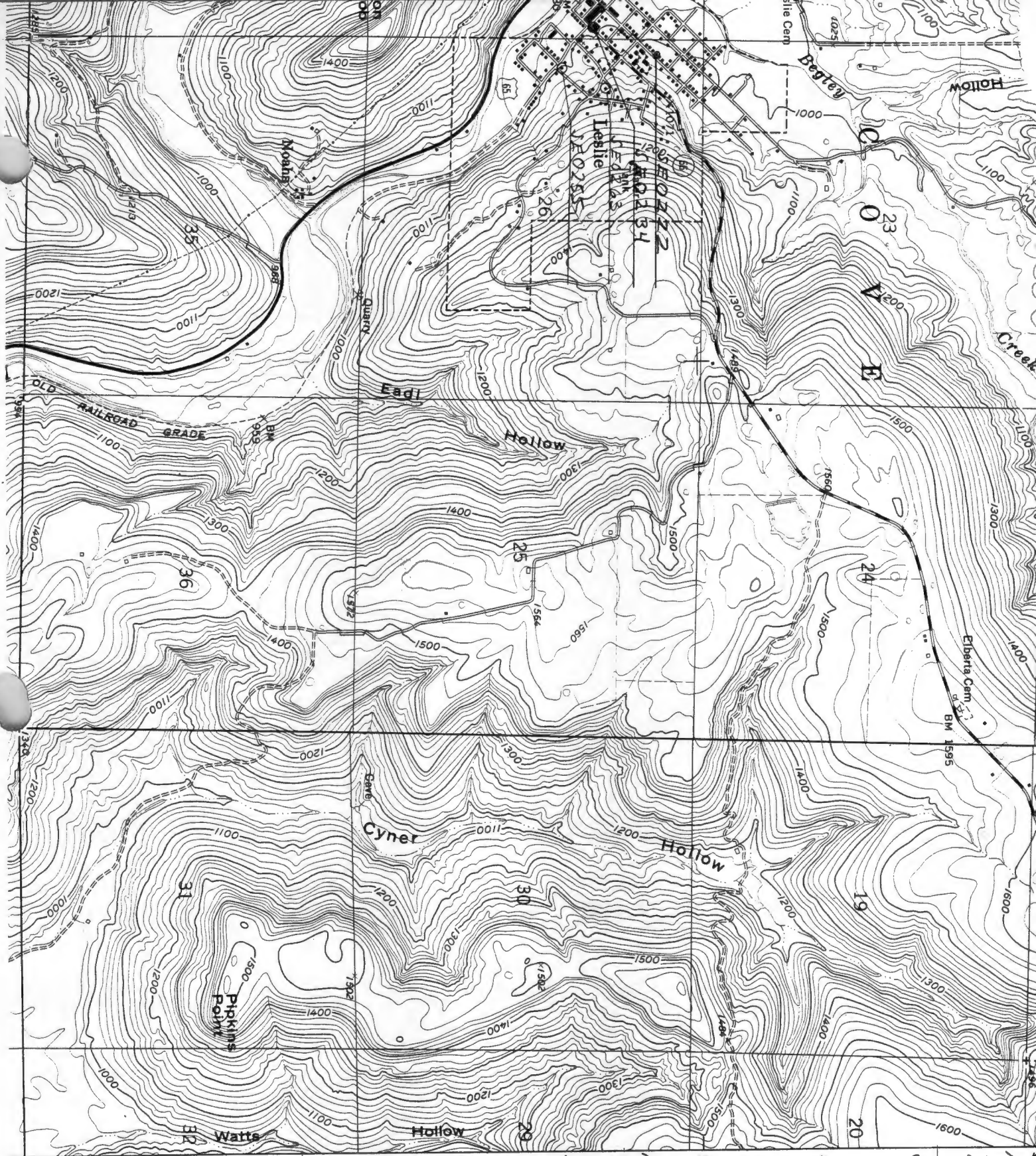


Columbus Hatchett House  
Searcy Co., Arkansas  
Photograph by Todd Ferguson  
August 1991  
Negative on file at AHP  
View of the rear, or  
northeastern, elevation  
from the north





Colombus Hatchett House  
Searcy Co., Arkansas  
Photograph by Todd Ferguson  
August 1991  
Negative on file at AHP  
View of Smokehouse from  
the south



Historic and  
 Architectural  
 Resources of Barry  
 Co., 1880-1950's  
 JERRY BOWEN,  
 ARKANSAS

3966

50'

SE 0222:  
 15/539740/3965020

3965

SE 0224:  
 15/539170/3968180

3964

SE 0234:  
 15/539770/3964870

3964

SE 0255:  
 15/540000/3964730

3964

SE 0263:  
 15/540010/3964990

T. 14 N.

T. 12 N.