

Book Copy

United States Department of the Interior  
National Park Service

NATIONAL REGISTER OF HISTORIC PLACES  
REGISTRATION FORM

=====

1. Name of Property

=====

historic name: State Highway 96 Bridge

other name/site number: SB0457

=====

2. Location

=====

street & number: State Highway 96 at its crossing of tributary of Vache  
Grasse Creek

not for publication: N/A

city/town: Greenwood

vicinity: X

state: AR county: Sebastian code: AR 131 zip code: 72949

=====

3. Classification

=====

Ownership of Property: Public-state

Category of Property: Structure

Number of Resources within Property:

Contributing

Noncontributing

<u>  1  </u>	<u>      </u>	buildings
<u>      </u>	<u>      </u>	sites
<u>      </u>	<u>      </u>	structures
<u>      </u>	<u>      </u>	objects
<u>  1  </u>	<u>  0  </u>	Total

Number of contributing resources previously listed in the National Register: N/A

Name of related multiple property listing: Historic Bridges of Arkansas

=====
4. State/Federal Agency Certification
=====

As the designated authority under the National Historic Preservation Act of 1986, as amended, I hereby certify that this X nomination request for determination of eligibility meets the documentation standards for registering properties in the National Register of Historic Places and meets the procedural and professional requirements set forth in 36 CFR Part 60. In my opinion, the property X meets does not meet the National Register Criteria. See continuation sheet.

Signature of certifying official
[Handwritten Signature]

Date
3-31-95

Arkansas Historic Preservation Program
State or Federal agency and bureau

In my opinion, the property meets does not meet the National Register criteria. See continuation sheet.

Signature of commenting or other official

Date

State or Federal agency and bureau

=====
5. National Park Service Certification
=====

I, hereby certify that this property is:

- entered in the National Register See continuation sheet.
determined eligible for the National Register See continuation sheet.
determined not eligible for the National Register
removed from the National Register
other (explain):

Signature of Keeper Date of Action

=====
6. Function or Use
=====

Historic: TRANSPORTATION Sub: Road-related
Current: TRANSPORTATION Sub: Road-related

=====

**7. Description**

=====

Architectural Classification:

Other  
\_\_\_\_\_  
\_\_\_\_\_

Other Description: Steel pony truss

Materials:	foundation	<u>Stone</u>	roof	<u>N/A</u>
	walls	<u>Steel</u>	other	<u>Asphalt and concrete deck over steel substructure</u>

Describe present and historic physical appearance. X See continuation sheet.

=====

**8. Statement of Significance**

=====

Certifying official has considered the significance of this property in relation to other properties: Local.

Applicable National Register Criteria: C

Criteria Considerations (Exceptions): N/A

Areas of Significance: ENGINEERING  
\_\_\_\_\_  
\_\_\_\_\_  
\_\_\_\_\_

Period(s) of Significance: 1938-1939

Significant Dates: 1938

Significant Person(s): N/A  
\_\_\_\_\_  
\_\_\_\_\_

Cultural Affiliation: N/A

Architect/Builder: Unknown  
\_\_\_\_\_  
\_\_\_\_\_

State significance of property, and justify criteria, criteria considerations, and areas and periods of significance noted above.  
X See continuation sheet.

=====
9. Major Bibliographical References
=====

See "Historic Bridges of Arkansas" MPS Nomination, Section H.

\_\_\_ See continuation sheet.

Previous documentation on file (NPS):

- preliminary determination of individual listing (36 CFR 67) has been requested.
- previously listed in the National Register
- previously determined eligible by the National Register
- designated a National Historic Landmark
- recorded by Historic American Buildings Survey # \_\_\_\_\_
- recorded by Historic American Engineering Record # \_\_\_\_\_

Primary Location of Additional Data:

- X State historic preservation office
- Other state agency
- Federal agency
- Local government
- University
- Other -- Specify Repository: \_\_\_\_\_

=====
10. Geographical Data
=====

Acreeage of Property: Less than one

Table with 6 columns: UTM References, Zone Easting, Northing, Zone Easting, Northing. Rows A, B, C, D with numerical values and underlines.

\_\_\_ See continuation sheet.

Verbal Boundary Description: \_\_\_ See continuation sheet.

Beginning at a point formed by the intersection of the northern edge of State Highway 96 with a perpendicular line running parallel with the eastern end of the bridge and located approximately 25 feet to the east thereof, proceed northerly for a distance of approximately 25 feet to its intersection with a perpendicular line running parallel with the bridge's northern side; thence proceed westerly along said line for a distance of approximately 112 feet to its intersection with a perpendicular line; thence proceed southerly along said line for a distance of approximately 72.2 feet to its intersection with a perpendicular line; thence proceed easterly along said line for a distance of approximately 112 feet to its intersection with a perpendicular line; thence proceed northerly to the point of beginning.

Boundary Justification: \_\_\_ See continuation sheet.

This boundary includes all the property historically associated with this resource.

=====  
11. Form Prepared By  
=====

Name/Title: Ken Story, National Register/Survey Coordinator  
Organization: Arkansas Historic Preservation Program Date: 03/27/95  
Street & Number: 323 Center Street, Suite 1500 Telephone: (501) 324-9880  
City or Town: Little Rock State: AR Zip: 72201

**United States Department of the Interior**  
**National Park Service**

**National Register of Historic Places**  
**Continuation Sheet**

Section number   7   Page   1  

---

**Description**

Located at the point where State Highway 96 crosses Vache Grasse Creek, the State Highway 96 Bridge is of steel pony truss design with stone masonry substructure. It consists of a single span, 60 feet in length. The entire bridge is 62 feet long, 18.8 feet wide curb to curb, and 22.2 feet to the outside of the bottom chords. The abutment material is stone and the deck material is an asphalt and concrete over a steel substructure. Additional steel handrails run the length of the deck on each side.

United States Department of the Interior  
National Park Service

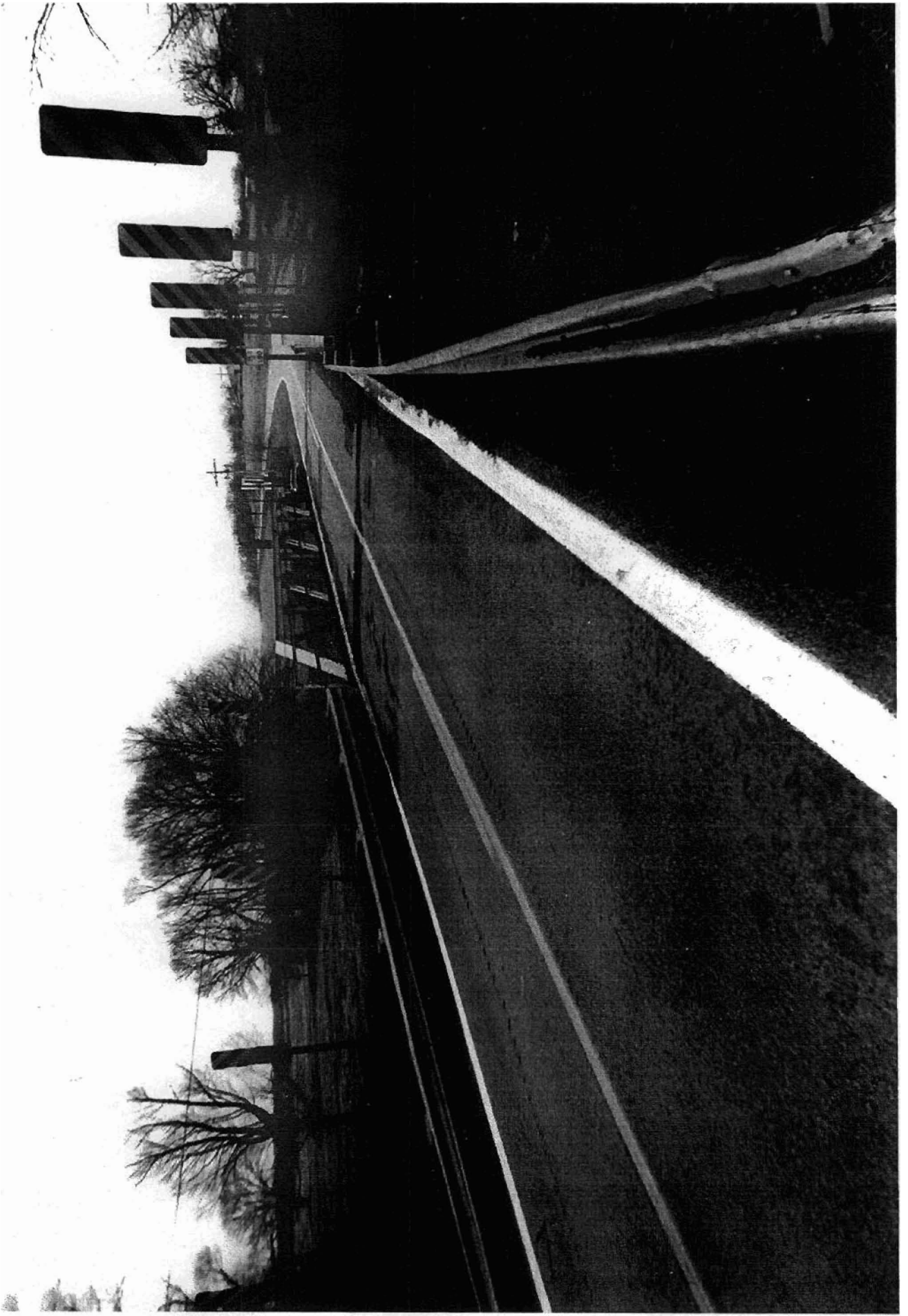
## National Register of Historic Places Continuation Sheet

Section number   8   Page   1  

---

### Significance

Constructed in 1938, the State Highway 96 Bridge is associated with the *Arkansas Highway and Transportation Era* historic context and is of the steel pony truss type. Though the identity of its original designer does not survive, it was constructed in conjunction with the Arkansas State Highway Commission and thus may well have been designed by one of that state agency's engineers. Given its relatively intact condition it retains sufficient integrity to remain associated with its historic period and is thus locally eligible under Criterion C.







DEPARTMENT OF THE INTERIOR  
GEOLOGICAL SURVEY

5417  
BARLI

7154  
LAV

LAVACA 7 MI

12' 30"

389

388

387000E

94° 15'

35° 15'

3901000W

390

387000E

388

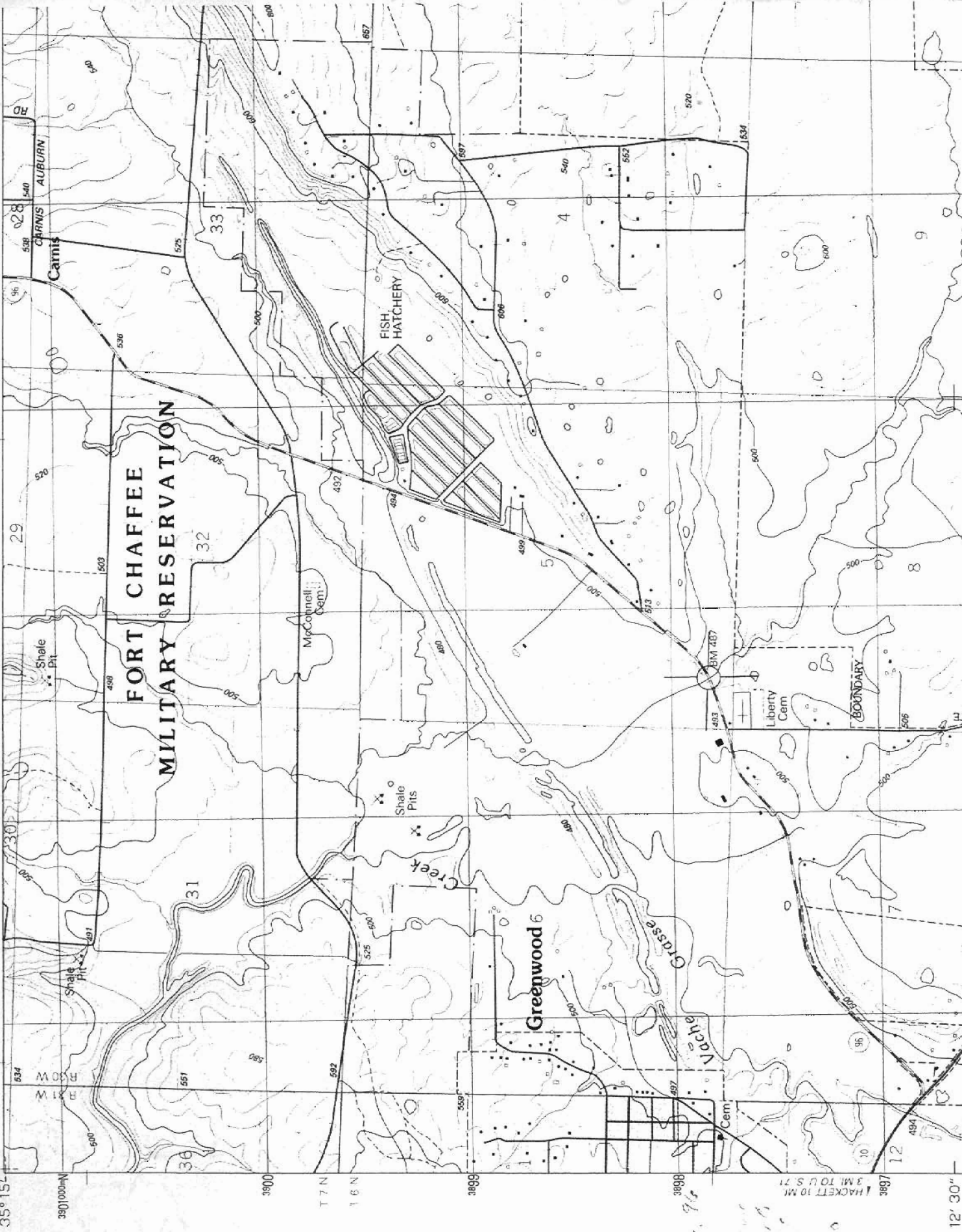
389

389

12' 30"

LAVACA 7 MI

7154  
LAV



Map Apr. 95  
Barlow  
Greenwood  
J. Barlow  
5/31/00  
80000

12' 30"

389

388

387000E

94° 15'

35° 15'

LAVACA 7 MI

7154  
LAV