

United States Department of the Interior  
National Park Service

National Register of Historic Places  
Registration Form

This form is for use in nominating or requesting determinations of eligibility for individual properties or districts. See instructions in *Guidelines for Completing National Register Forms* (National Register Bulletin 16). Complete each item by marking "x" in the appropriate box or by entering the requested information. If an item does not apply to the property being documented, enter "N/A" for "not applicable." For functions, styles, materials, and areas of significance, enter only the categories and subcategories listed in the instructions. For additional space use continuation sheets (Form 10-900a). Type all entries.

1. Name of Property

historic name Milltown Bridge

other names/site number HAER No. AR-55

2. Location

street & number County Road #77, 1.5 miles west of Milltown

not for publication N/A

city, town Milltown

vicinity

state Arkansas

code 05

county Sebastian

code 131

zip code 72936

3. Classification

Ownership of Property

- private
- public-local
- public-State
- public-Federal

Category of Property

- building(s)
- district
- site
- structure
- object

Number of Resources within Property

| Contributing | Noncontributing  |
|--------------|------------------|
| _____        | _____ buildings  |
| _____        | _____ sites      |
| <u>1</u>     | _____ structures |
| _____        | _____ objects    |
| <u>1</u>     | _____ Total      |

Name of related multiple property listing:

Historic Bridges of Arkansas

Number of contributing resources previously

listed in the National Register N/A

4. State/Federal Agency Certification

As the designated authority under the National Historic Preservation Act of 1966, as amended, I hereby certify that this  nomination  request for determination of eligibility meets the documentation standards for registering properties in the National Register of Historic Places and meets the procedural and professional requirements set forth in 36 CFR Part 60. In my opinion, the property  meets  does not meet the National Register criteria.  See continuation sheet.

Signature of certifying official

Date

Arkansas Historic Preservation Program

State or Federal agency and bureau

In my opinion, the property  meets  does not meet the National Register criteria.  See continuation sheet.

Signature of commenting or other official

Date

State or Federal agency and bureau

5. National Park Service Certification

I, hereby, certify that this property is:

- entered in the National Register.
- See continuation sheet.
- determined eligible for the National Register.  See continuation sheet.
- determined not eligible for the National Register.
- removed from the National Register.
- other, (explain:)

Signature of the Keeper

Date of Action

---

**6. Function or Use**

---

Historic Functions (enter categories from instructions)

Transportation/Road-Related

---

---

---

Current Functions (enter categories from instructions)

Transportation/Road-Related

---

---

---

---

**7. Description**

---

Architectural Classification

(enter categories from instructions)

Other: Closed Spandrel, Deck Arch

---

---

---

Materials (enter categories from instructions)

foundation masonrywalls masonry

---

---

---

roof

other

---

---

---

---

**Describe present and historic physical appearance**

United States Department of the Interior  
National Park Service

# National Register of Historic Places Continuation Sheet

Section number 7 Page 1

---

## SUMMARY

The Milltown Bridge, located on a secondary county dirt road in the south-eastern region of Sebastian County, is an excellent example of a relatively simplistic masonry bridge in Arkansas. Its closed spandrel, deck arch design is strictly functional, exhibiting only coursed masonry and voussoir in its limited detailing.

## ELABORATION

The Milltown Bridge is a two-span, 24-foot-long, masonry-arch bridge, constructed from roughly squared, coursed masonry. Its two arches, each 10-feet long, are semi-circular with the arch-barrels running skew to the axis of the spandrel wall (from the south elevation, the arch-barrels are skewed to the west). Each arch is trimmed with roughly cut voussoirs without keystones. Wing-walls are stepped downward. A short parapet is currently covered by road fill. A round, galvanized drain pipe in a stone wall has been added to the northeast wing-wall to carry a small run-off under an adjacent field-road. The date of this new construction is unknown. The Milltown Bridge is in excellent condition and is currently being used for vehicular traffic.

United States Department of the Interior  
National Park Service

## National Register of Historic Places Continuation Sheet

Section number 8 Page 1

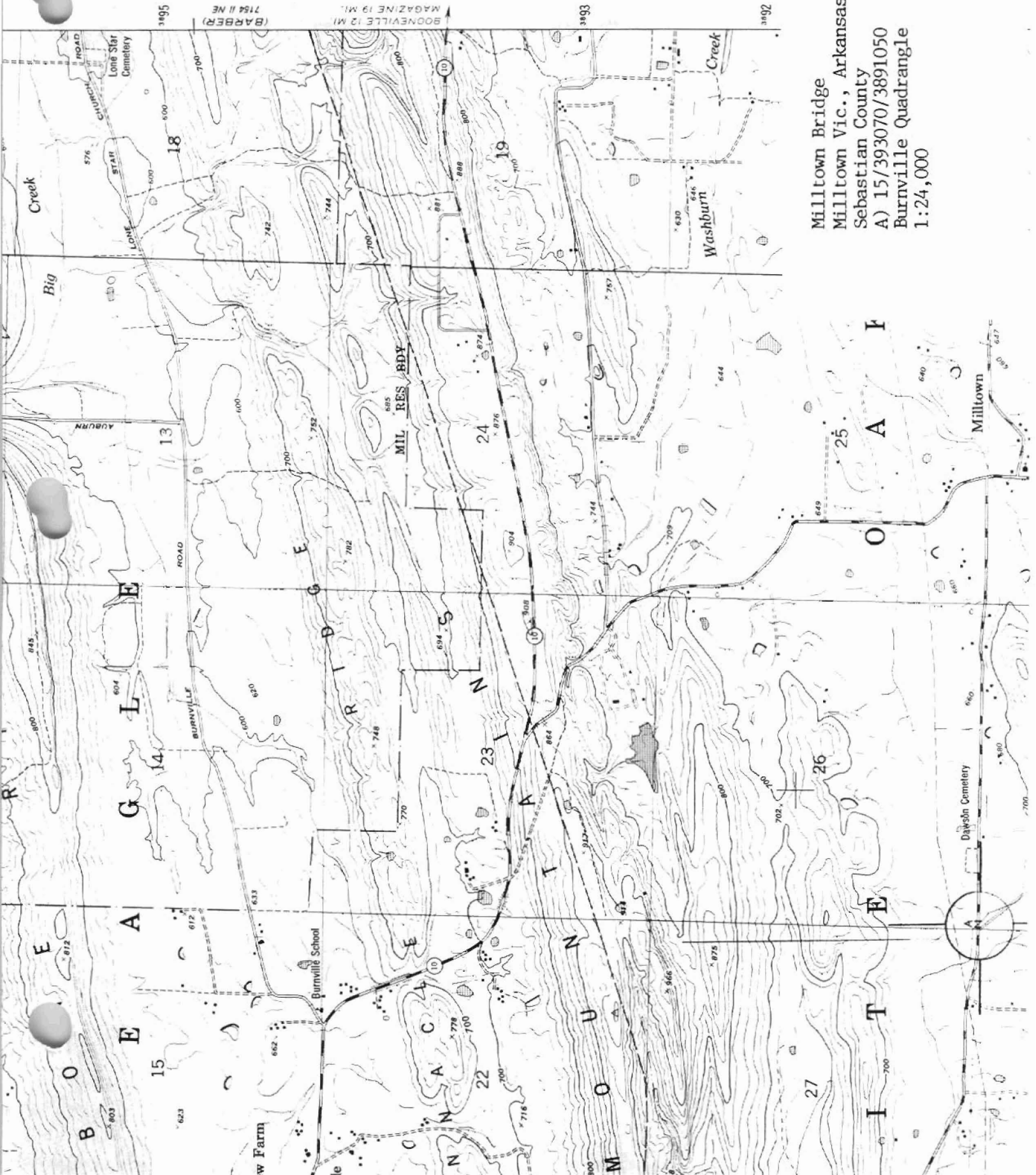
---

### SUMMARY

The Milltown Bridge survives as a rare Arkansas example of a federally conceived and constructed masonry bridge. It was built out of local material using labor intensive techniques during the "Depression Era" and as such is being nominated under Criteria A and C with statewide significance.

### SIGNIFICANCE

The Milltown Bridge is an example of a relatively simple masonry, closed-spandrel deck arch bridge constructed in Arkansas under the authority of the Works Progress Administration (WPA) in the late 1930's. The exact date of construction is not known. It remains as one of eight identified bridges of its type in the state and reflects the efforts of the WPA to alleviate the effects of "Depression Era" unemployment at the local county level in Arkansas. In addition, the Milltown Bridge expresses the WPA's achievements in bridge design, construction and craftsmanship during the Arkansas Highway and Transportation Department Era: 1923-1939.



Milltown Bridge  
 Milltown Vic., Arkansas  
 Sebastian County  
 A) 15/393070/3891050  
 Burnsville Quadrangle  
 1:24,000

3895

(BARBER)  
7154 II NE

BOONEVILLE 12 MI.  
MAGAZINE 19 MI.

3893

3892

18

19

13

24

14

23

15

22

27

26

25

E A

G L E

R I D G E

N S

M O U N T

E I

A F

Dawson Cemetery

Milltown

Washburn Creek

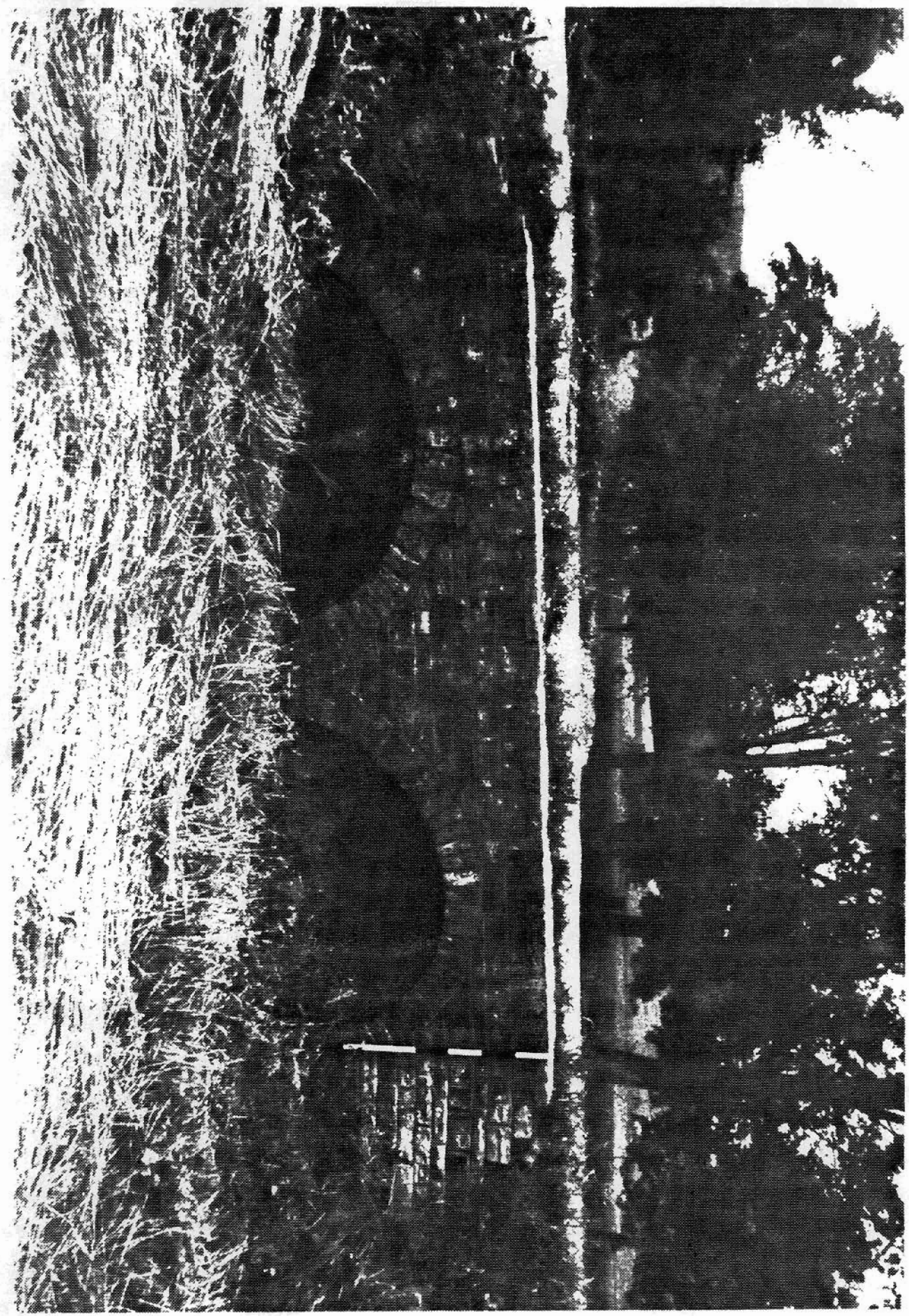
Big Creek

Lone Star Cemetery

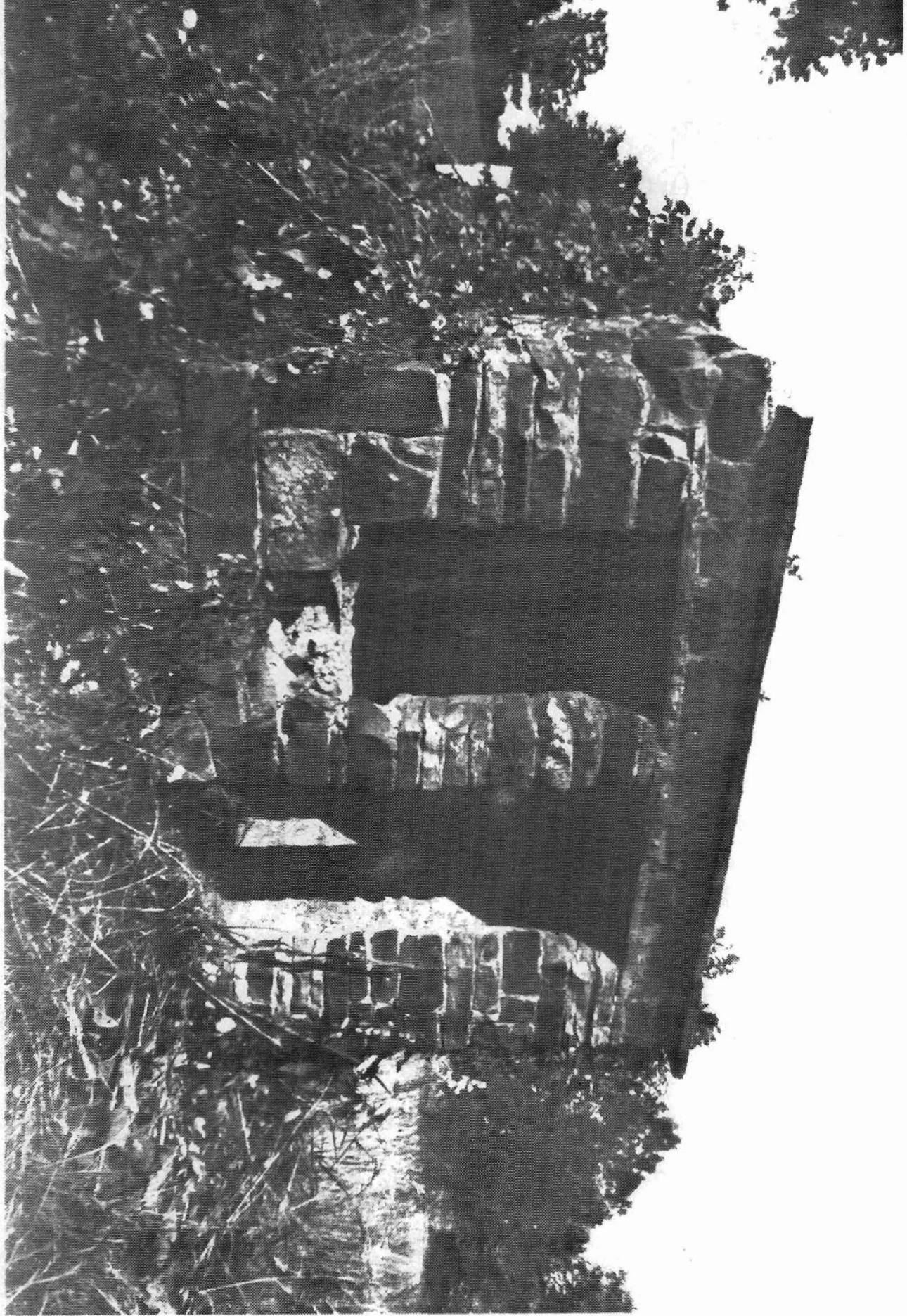
Burnsville School

MIL RES BDY















**8. Statement of Significance**

Certifying official has considered the significance of this property in relation to other properties:

nationally  statewide  locally

Applicable National Register Criteria  A  B  C  D

Criteria Considerations (Exceptions)  A  B  C  D  E  F  G

Areas of Significance (enter categories from instructions)

Transportation

Engineering

Social History

\_\_\_\_\_

\_\_\_\_\_

\_\_\_\_\_

\_\_\_\_\_

\_\_\_\_\_

Period of Significance

Late 1930's

\_\_\_\_\_

\_\_\_\_\_

Significant Dates

Late 1930's

\_\_\_\_\_

\_\_\_\_\_

Cultural Affiliation

N/A

\_\_\_\_\_

\_\_\_\_\_

Significant Person

N/A

Architect/Builder

Builder: Works Progress Administration

\_\_\_\_\_

State significance of property, and justify criteria, criteria considerations, and areas and periods of significance noted above.

**9. Major Bibliographical References**

See Historic Bridges of Arkansas, Multiple Property Nomination, Section H.

Previous documentation on file (NPS):

- preliminary determination of individual listing (36 CFR 67) has been requested
- previously listed in the National Register
- previously determined eligible by the National Register
- designated a National Historic Landmark
- recorded by Historic American Buildings Survey # \_\_\_\_\_
- recorded by Historic American Engineering Record # HAER No. AR-55

See continuation sheet

Primary location of additional data:

- State historic preservation office
- Other State agency
- Federal agency
- Local government
- University
- Other

Specify repository:  
U.S. Library of Congress

**10. Geographical Data**

Acreeage of property Less than one acre

UTM References

A 115 31913070 318191050  
 Zone Easting Northing

C \_\_\_\_\_

B \_\_\_\_\_  
 Zone Easting Northing

D \_\_\_\_\_

See continuation sheet

Verbal Boundary Description

Beginning at a point approximately 830 feet west of the southwest corner of Dawson Cemetery on County Road #77, the Milltown Bridge boundary begins at the east end abutment, where it extends west for approximately 24 feet, then terminates at the west end abutment.

See continuation sheet

Boundary Justification

The boundary includes the main spans, parapets, pier, and abutments that are historically associated with this property.

See continuation sheet

**11. Form Prepared By**

name/title Michael Swanča, Survey Coordinator

organization Arkansas Historic Preservation Program date February 5, 1990

street & number 225 East Markham Street telephone (501) 371-2763

city or town Little Rock state Arkansas zip code 72201