

book NR LISTED 5/18/95

United States Department of the Interior
National Park Service

NATIONAL REGISTER OF HISTORIC PLACES
REGISTRATION FORM

=====

1. Name of Property

historic name: Amboy Overpass

other name/site number: PU4777

=====

2. Location

street & number: State Highway 365 at crossing of Union-Pacific Railroad
north of junction of Highway 365 and State Highway 176

not for publication: N/A

city/town: North Little Rock vicinity: N/A

state: AR county: Pulaski code: AR 119 zip code: 72114

=====

3. Classification

Ownership of Property: Public-state

Category of Property: Structure

Number of Resources within Property:

Contributing		Noncontributing	
<u> </u>	<u> </u>	<u> </u>	buildings
<u> </u>	<u> </u>	<u> </u>	sites
<u> 1 </u>	<u> </u>	<u> </u>	structures
<u> </u>	<u> </u>	<u> </u>	objects
<u> 1 </u>	<u> </u>	<u> 0 </u>	Total

Number of contributing resources previously listed in the National Register: N/A

Name of related multiple property listing: Historic Bridges of Arkansas

=====

4. State/Federal Agency Certification

=====

As the designated authority under the National Historic Preservation Act of 1986, as amended, I hereby certify that this X nomination _____ request for determination of eligibility meets the documentation standards for registering properties in the National Register of Historic Places and meets the procedural and professional requirements set forth in 36 CFR Part 60. In my opinion, the property X meets _____ does not meet the National Register Criteria. _____ See continuation sheet

Cathryn A. Slater _____ Date 4-5-95
Signature of certifying official

Arkansas Historic Preservation Program
State or Federal agency and bureau

In my opinion, the property _____ meets _____ does not meet the National Register criteria. _____ See continuation sheet.

Signature of commenting or other official Date

State or Federal agency and bureau

=====

5. National Park Service Certification

=====

I, hereby certify that this property is:

- _____ entered in the National Register _____
_____ See continuation sheet.
- _____ determined eligible for the _____
National Register _____
_____ See continuation sheet.
- _____ determined not eligible for the _____
National Register _____
- _____ removed from the National Register _____
- _____ other (explain): _____

Signature of Keeper Date of Action

=====

6. Function or Use

=====

Historic: TRANSPORTATION Sub: Road-related

Current: TRANSPORTATION Sub: Road-related

=====

7. Description

=====

Architectural Classification:

Other _____

Other Description: Open masonry substructure

Materials:	foundation	<u>Concrete</u>	roof	<u>N/A</u>
	walls	<u>Concrete balustrade</u>	other	<u>Asphalt over reinforced concrete</u>

Describe present and historic physical appearance. X See continuation sheet.

=====

8. Statement of Significance

=====

Certifying official has considered the significance of this property in relation to other properties: Local.

Applicable National Register Criteria: C

Criteria Considerations (Exceptions): N/A

Areas of Significance: ENGINEERING

Period(s) of Significance: 1941-1945 _____

Significant Dates: 1941 _____

Significant Person(s): N/A

Cultural Affiliation: N/A _____

Architect/Builder: Federal Works Agency Public Roads Administration

State significance of property, and justify criteria, criteria considerations, and areas and periods of significance noted above.
X See continuation sheet.

=====
9. Major Bibliographical References
=====

See "Historic Bridges of Arkansas" MPS Nomination, Section H.

___ See continuation sheet.

Previous documentation on file (NPS):

- preliminary determination of individual listing (36 CFR 67) has been requested.
- previously listed in the National Register
- previously determined eligible by the National Register
- designated a National Historic Landmark
- recorded by Historic American Buildings Survey # _____
- recorded by Historic American Engineering Record # _____

Primary Location of Additional Data:

- X State historic preservation office
- Other state agency
- Federal agency
- Local government
- University
- Other -- Specify Repository: _____

=====
10. Geographical Data
=====

Acreeage of Property: Less than one

Table with 6 columns: UTM References, Zone, Easting, Northing, Zone, Easting, Northing. Rows A, B, C, D.

___ See continuation sheet.

Verbal Boundary Description: ___ See continuation sheet.

Beginning at a point formed by the intersection of the western edge of State Highway 365 with a perpendicular line running parallel with the northern end of the bridge and located approximately 25 feet to the north thereof, proceed westerly for a distance of approximately 25 feet to its intersection with a perpendicular line running parallel with the bridge's western side; thence proceed southerly along said line for a distance of approximately 623 feet to its intersection with a perpendicular line; thence proceed easterly along said line for a distance of approximately 86 feet to its intersection with a perpendicular line; thence proceed northerly along said line for a distance of approximately 623 feet to its intersection with a perpendicular line; thence proceed westerly to the point of beginning.

Boundary Justification: ___ See continuation sheet.

This boundary includes all the property historically associated with this resource.

=====
11. Form Prepared By
=====

Name/Title: Ken Story, National Register/Survey Coordinator
Organization: Arkansas Historic Preservation Program Date: 04/04/95
Street & Number: 323 Center Street, Suite 1500 Telephone: (501) 324-9880
City or Town: Little Rock State: AR Zip: 72201

United States Department of the Interior
National Park Service

National Register of Historic Places
Continuation Sheet

Section number 7 Page 1

Description

Located on State Highway 365 at the point where it crosses the Union-Pacific Railroad tracks, the Amboy Overpass is of the open masonry substructure type. It consists of a total of twelve spans, the longest of which measures 80 feet. The total length is 573 feet, with a deck width of 30 feet and an overall width of 36 feet. The eleven sets of reinforced concrete piers support the bridge, as do the reinforced concrete abutments. A reinforced concrete balustrade runs the full length of the deck on each side.

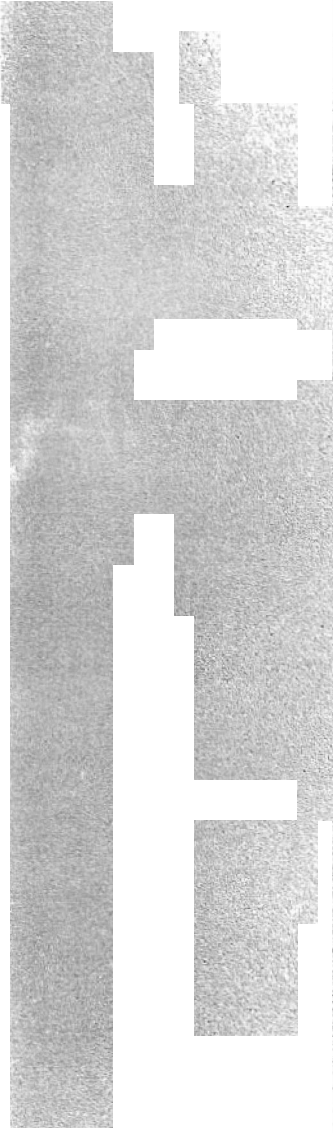
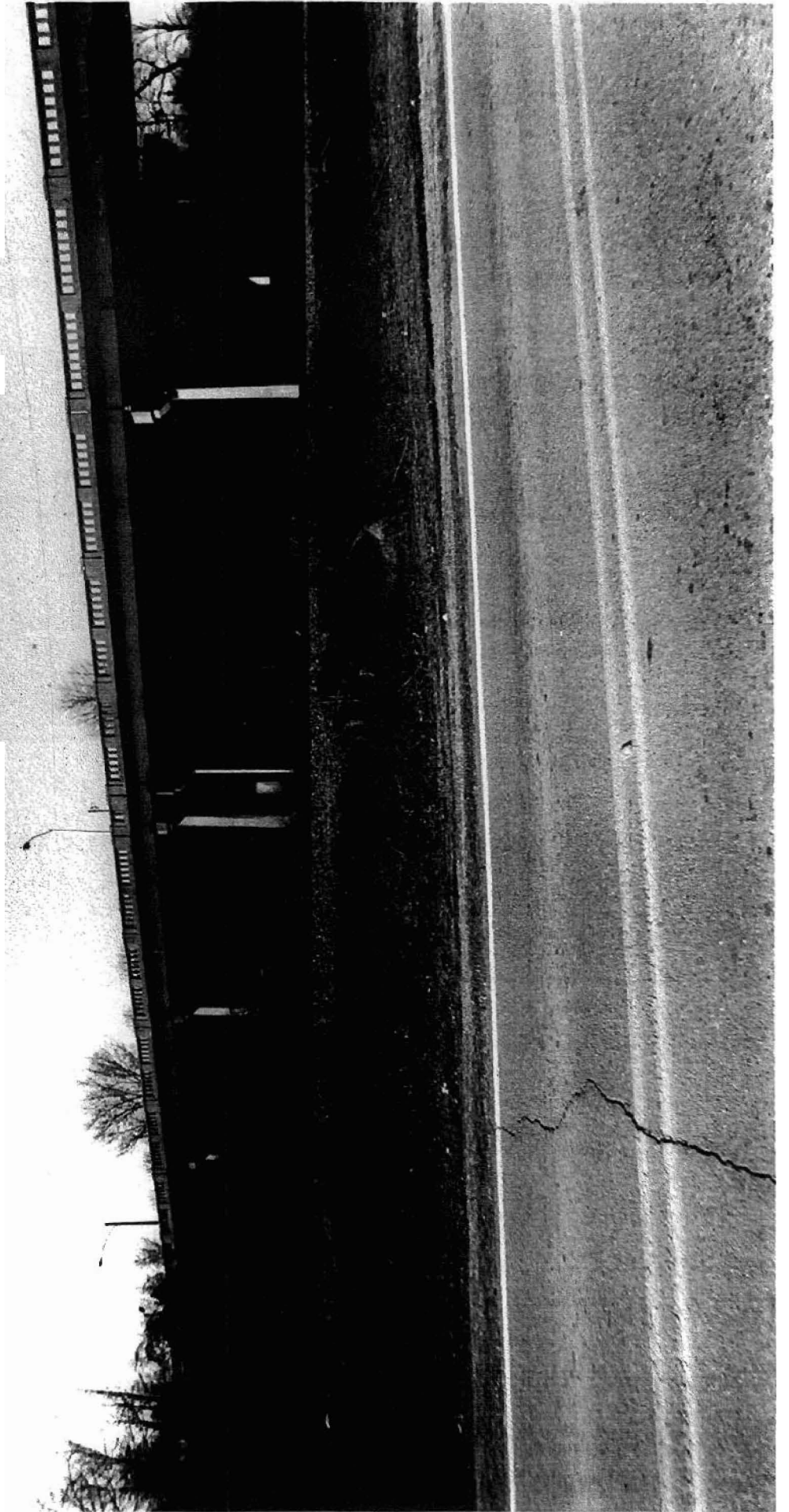
United States Department of the Interior
National Park Service

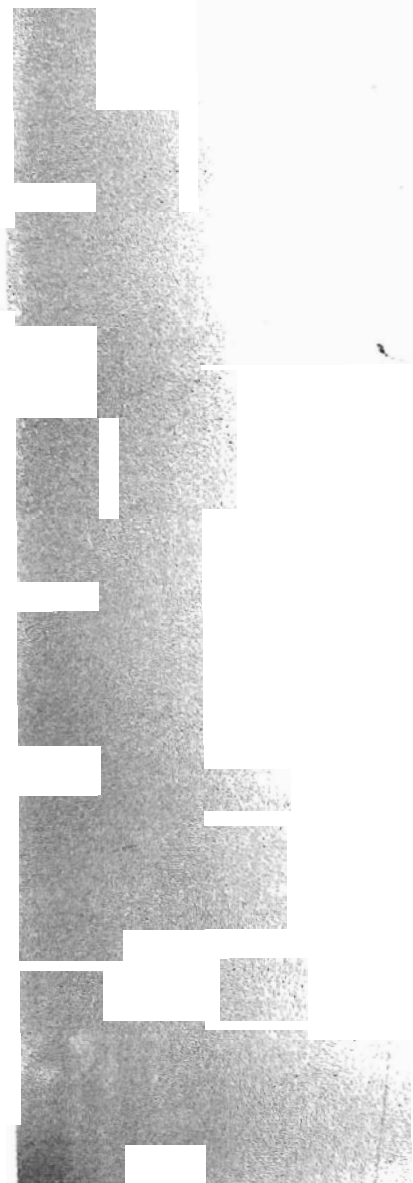
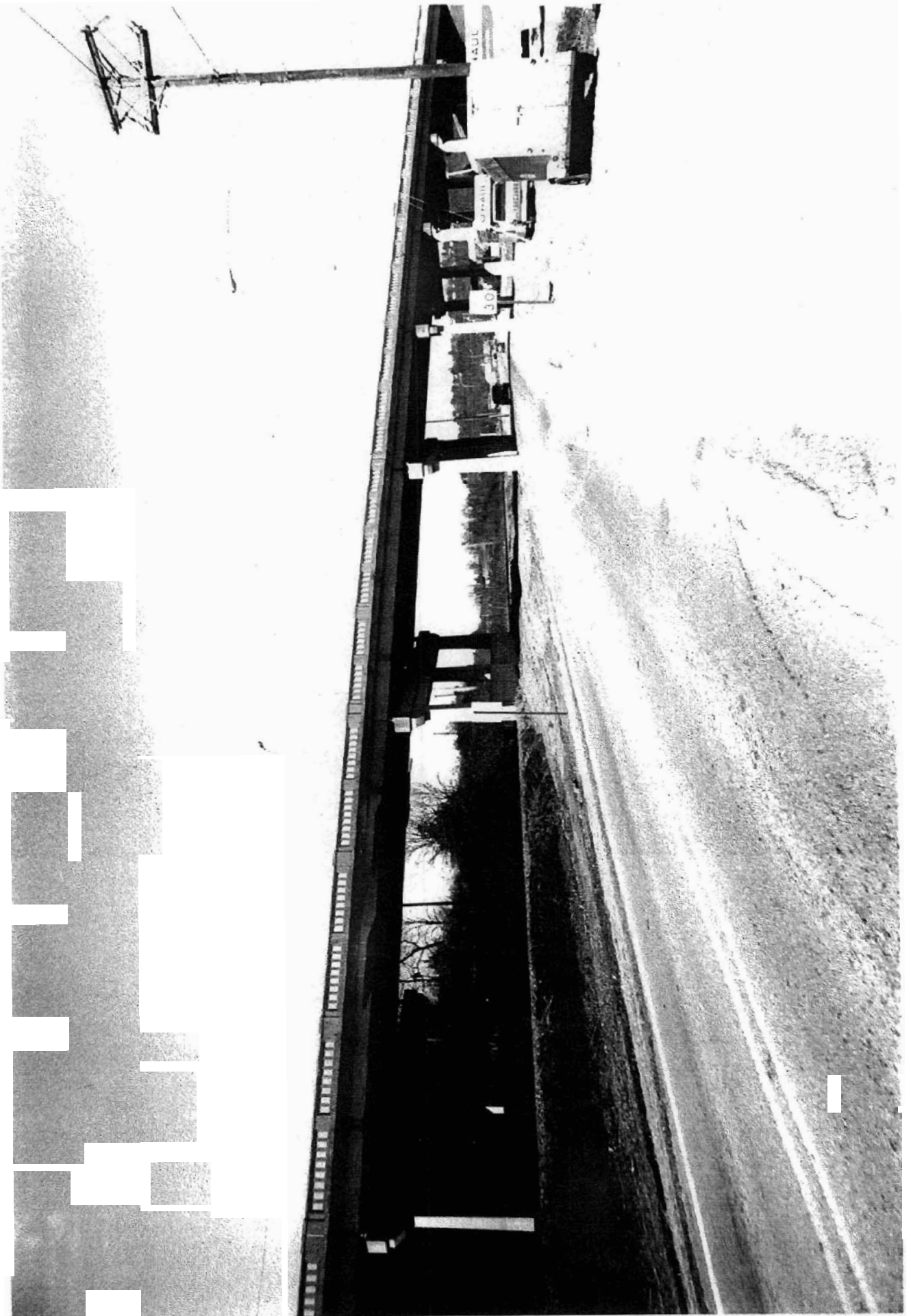
National Register of Historic Places Continuation Sheet

Section number 8 Page 1

Significance

Constructed in 1941, the Amboy Overpass is associated with the *World War II Era* historic context and is of the open masonry substructure type. It was erected by the contractor J. P. McNulty in conjunction with the Arkansas State Highway Commission and the Federal Works Agency Public Roads Administration. Given its relatively intact condition it retains sufficient integrity to remain associated with its historic period; it is thus locally eligible under Criterion C.





AMBOY OVERPASS

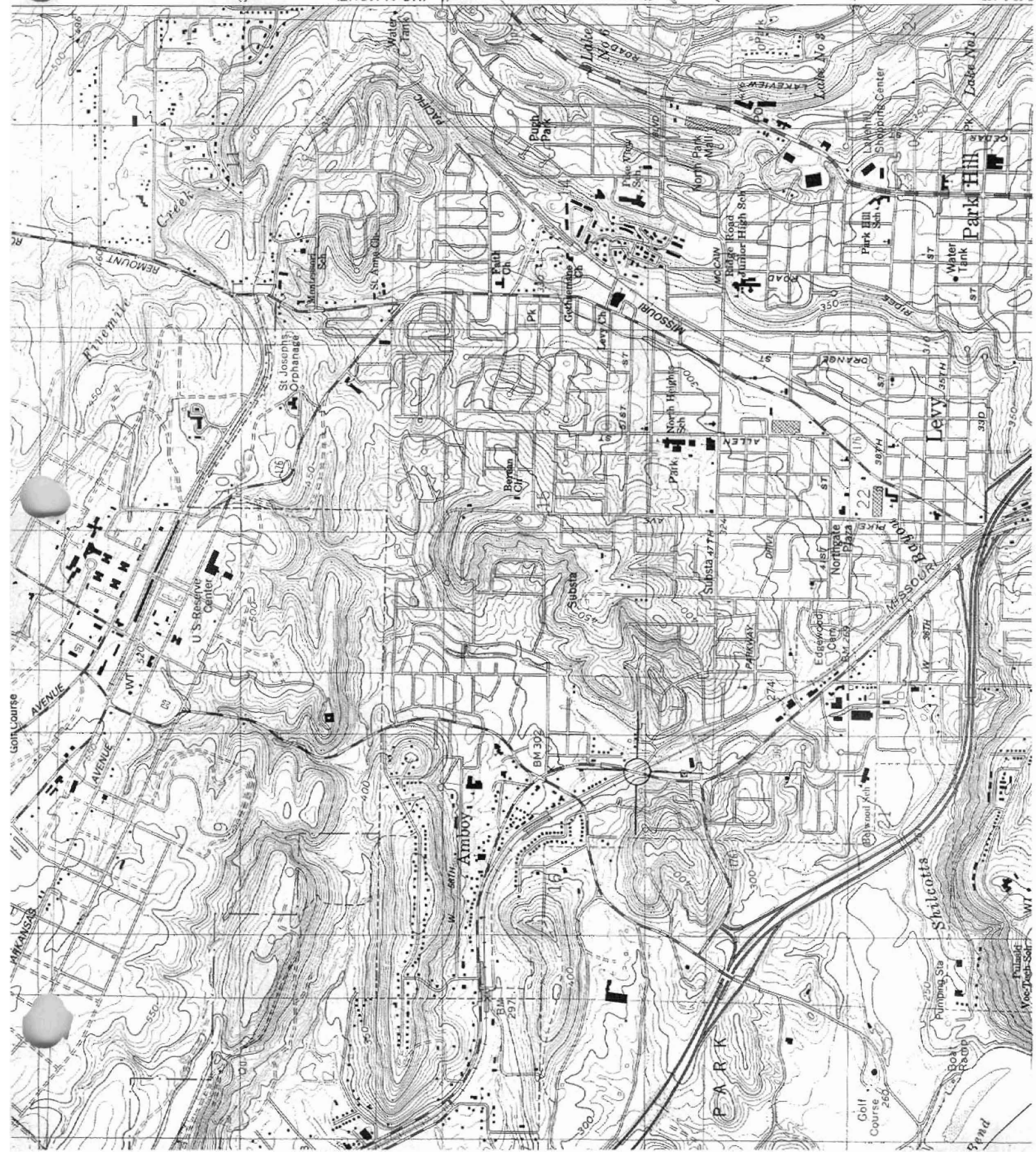
A. B. MENDLITZ
CONTRACTOR

ARKANSAS
STATE HIGHWAY COMMISSION
AND THE

FEDERAL WORKS AGENCY
PUBLIC ROADS ADMINISTRATION

1941

BRIDGE NO. _____



Amboy
 QUERRESS
 (STATE ROAD
 365)
 8951 NORTH LITTLE
 ROCK, QUERRESS, MO
 AR
 15/564800/
 3851040

3953

(MCALMONT)
 7553 1 SW

3952

4730'

5 67 & 187