

60-183-4110-63

OMB NO. 1024-00
EXP. 12/31/84. Puzaal

United States Department of the Interior
National Park Service

National Register of Historic Places
Inventory—Nomination Form

For NPS use only
received
date entered

Continuation sheet 81 Item number 1,2,4,6, & 10 Page 1

INDIVIDUAL DATA SHEET

General Description

Code: PU-122	Congressional District: Second
Associated Reformed	
Name: Presbyterian Church	Current Owner: Emmanuel Baptist Church
Address: 3323 W. 12th	
Little Rock, Arkansas	Address: 3323 W. 12th
County: Pulaski	Little Rock, Arkansas 72204

Architectural Information

Architectural Firm: Charles L. Thompson	
Date of Construction: ca. 1925	Stylistic Influence: Classical Revival
Original Use: Church	Present Use: Church

Geographical Information

UTM Reference: 15 563060/3844220	Acreage: Less than one
Verbal Boundary Description: Jones & Worthen's Addition Block 15, Lots 4, 5, 6	

Condition

<input type="checkbox"/> Excellent	<input type="checkbox"/> Deteriorated	<input type="checkbox"/> Unaltered
<input checked="" type="checkbox"/> Good	<input type="checkbox"/> Ruins	<input checked="" type="checkbox"/> Altered
<input type="checkbox"/> Fair	<input type="checkbox"/> Unexposed	

United States Department of the Interior
National Park Service

National Register of Historic Places
Inventory—Nomination Form

received
date entered

Continuation sheet

82

Item number 7 & 8

Page 2

Code: PU-122

(3323 W. 12th, Little Rock, AR)

Physical Description

Located on a small corner lot on a busy thoroughfare, a striking temple front with an Ionic hexastyle portico dominates the design of this otherwise simple red-brick church of modest size designed by Charles Thompson. Elevated on a high brick foundation, the church is approached by a wide group of stairs, encased by brick piers capped with cast stone coping. In keeping with the modest scale and size of the church, decoration is at a minimum. The Ionic columns, which rest on Attic bases, are unfluted and the entablature is unembellished. The double-leaf entrance is crowned by multi-paned transoms. Two large, multi-paned windows flank the door. Appearing over a simple cast stone molding at auditorium balcony level are three smaller windows with similar multi-paned windows in which mullions are arranged like spokes radiating from the center. The sides of the church have five bays separated by shallow brick piers which rest on cast stone water-table. Two large multi-paned windows appear in the bay nearest the entrance; subsequent bays feature large stained-glass windows in predominantly green and gold tones.

Statement of Significance

The church at 3323 West 12th in Little Rock is architecturally significant in its finely detailed Classical Revival design. The building was designed ca. 1925 by Charles L. Thompson in a then outlying area of town. Now a major street in Little Rock, the semi-commercial location of the building only serves to create a setting in which it is a landmark structure. The attractive temple front of the church features an Ionic hexastyle portico. The simplicity of the design is accentuated by the classical details on the portico. The elegant church is of red brick construction and is elevated on a high brick foundation. The classical influence in the design of this church varies from Thompson's tendency to utilize Gothic details in church design. This design features the only use of a monumental temple front portico for a church in the collection of drawings.

Rock, Pulaski Co., Arkansas

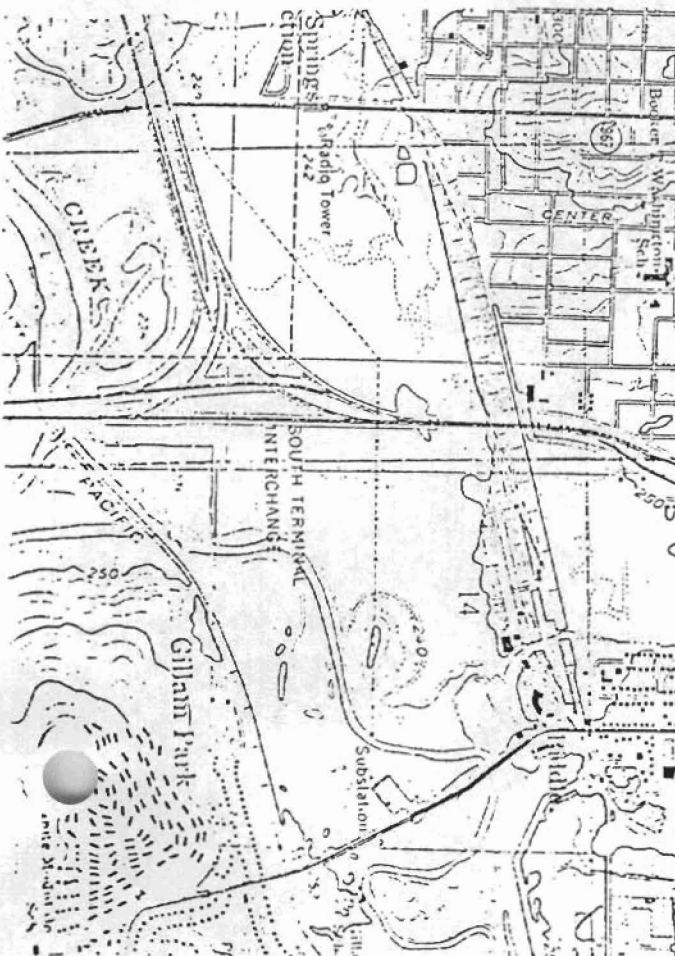
Triangle Name: Little Rock, Ark.

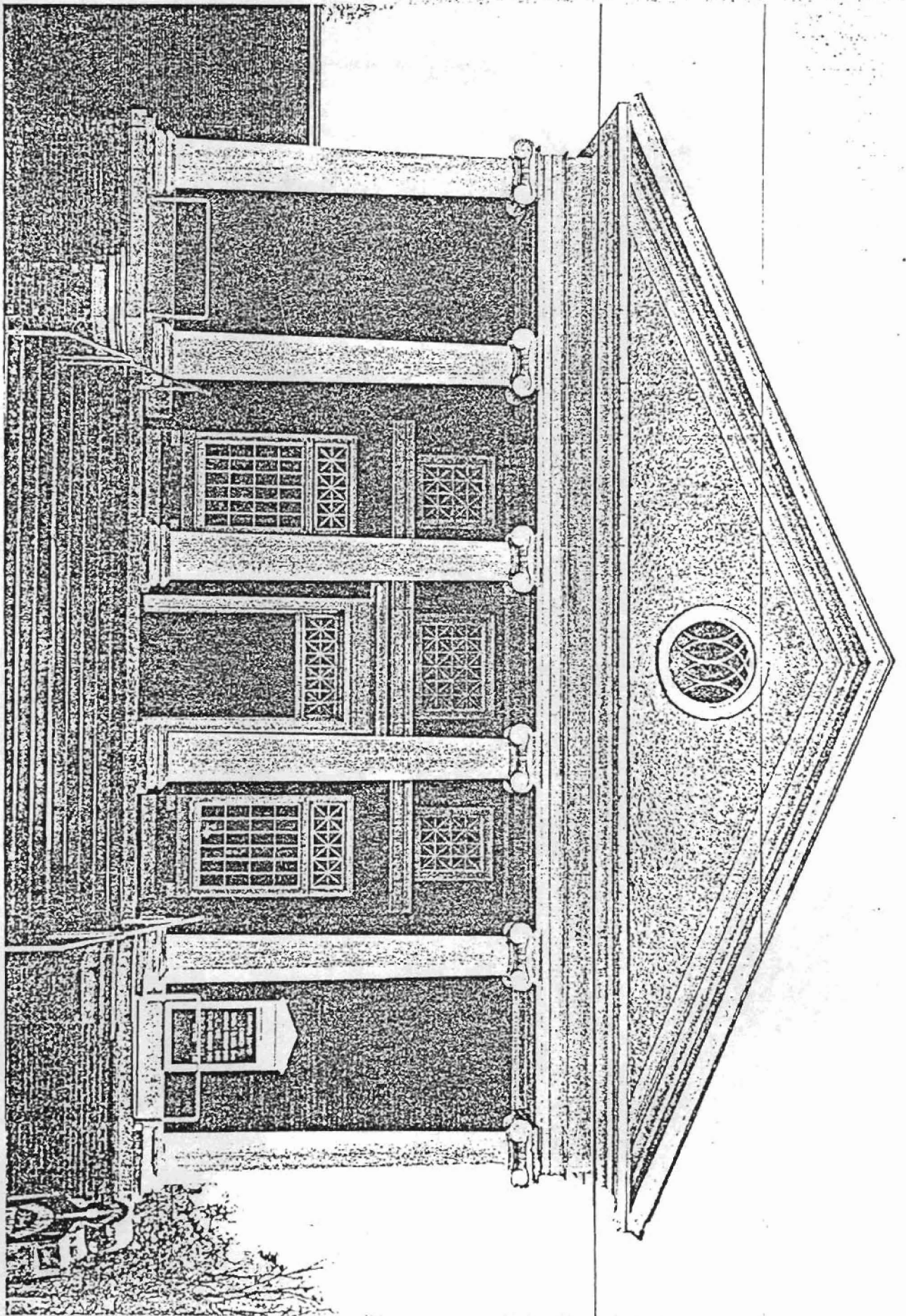
Scale: 1:24,000

Reference:	PU-090	15	566020/3844140
	PU-102	15	567080/3844520
	PU-106	15	566960/3844810
	PU-108	15	566890/3844870
	PU-109	15	566710/3844330

	PU-110	15	566830/3844330
	PU-115	15	567280/3844220
	PU-117	15	565730/3844950
	PU-122	15	563060/3844220
	PU-126	15	563670/3843210
	PU-127	15	566340/3843400
	PU-128	15	566470/3843490
	PU-134	15	566280/3843710
	PU-135	15	566220/3843810
	PU-141	15	565880/3843170
	PU-142	15	565820/3842960

	PU-143	15	565970/3843430
	PU-144	15	565950/3843270
	PU-145	15	565940/3843220
	PU-148	15	565930/3843040
	PU-149	15	565980/3843040
	PU-150	15	565980/3842920
	PU-151	15	565980/3842820
	PU-152	15	565920/3842430
	PU-159	15	562730/3844410
	PU-163	15	565680/3844930
	PU-165	15	565700/3844960





pu3224