

United States Department of the Interior
National Park Service

National Register of Historic Places
Inventory—Nomination Form

EXP. 12/31/84 PU317L
60-133-1110-61

For NPS use only
received
date entered

Continuation sheet 236

Item number 1, 2, 4 & 6

Page 1

INDIVIDUAL DATA SHEET

General Description

Code: PU-096

Congressional District: Second

Name: Retan House

Current Owner: Andrew F. Hicks

Address: 2510 Broadway

Kathleen Reynolds

Little Rock, Arkansas

Address:

2510 Broadway

County: Pulaski

Little Rock, Arkansas 72206

Architectural Information

Architectural Firm: Charles L. Thompson

Date of Construction: ca. 1915

Stylistic Influence: Prairie Style

Original Use: Residence

Present Use: Residence

Geographical Information

UTM Reference: 15 566020/3842460

Acreage: Less than one

Verbal Boundary Description: Retan's Addition

Block 2, Lot 10 & South 1/4 of Lot 11

Condition

Excellent
 Good
 Fair

Deteriorated
 Ruins
 Unexposed

Unaltered
 Altered

National Register of Historic Places
Inventory—Nomination Form

For NPS use only
RECEIVED
date entered

Continuation sheet 237

Item number 7 & 8

Page 2

Code: PU-096

(2510 Broadway, Little Rock, AR)

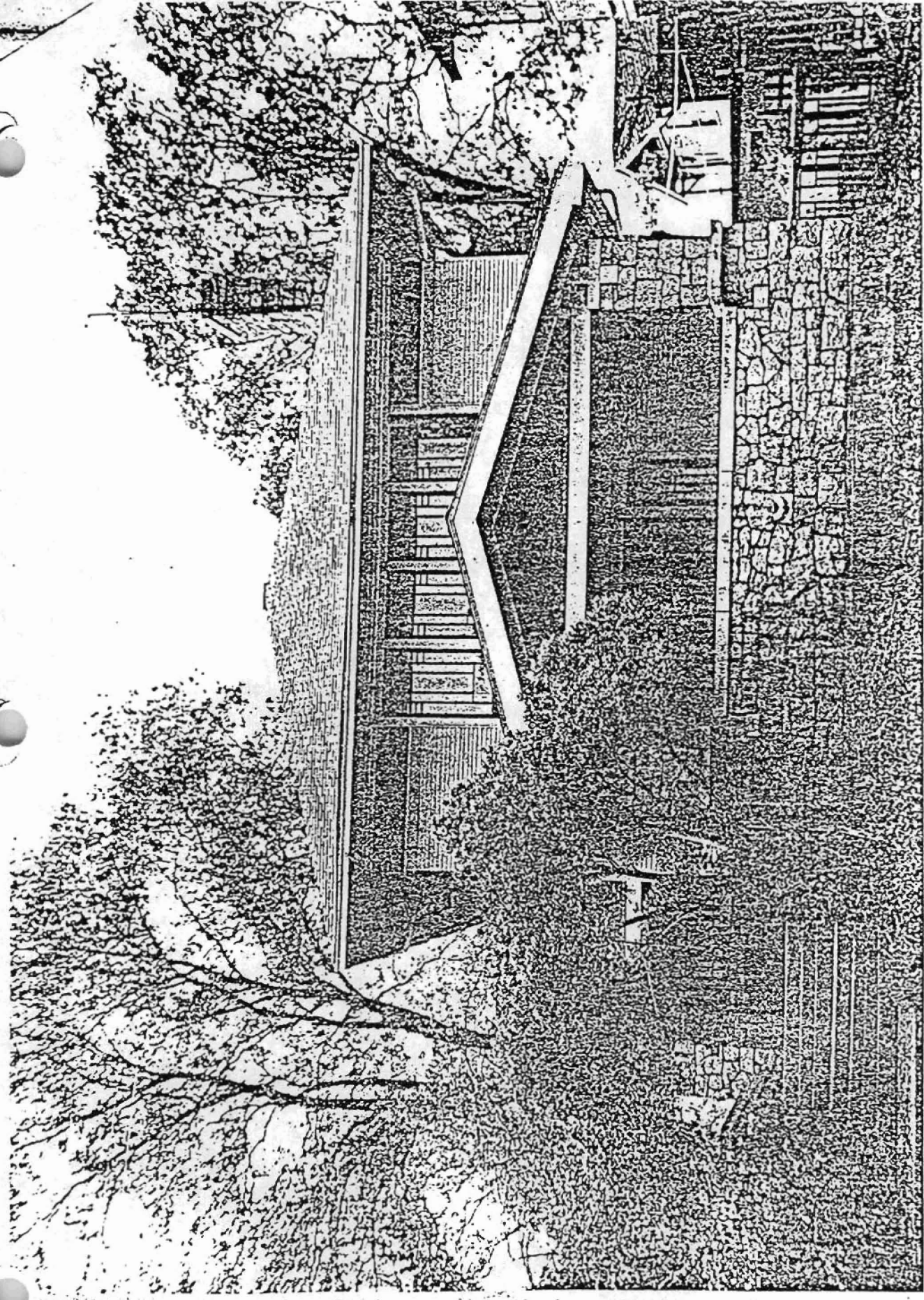
Physical Description

Although this frame house is of modest character, it is one of Charles Thompson's most distinguished Prairie Style-influenced designs, thought to have been executed around 1915. The simple massing of the main two-story block is capped by a shallow hipped roof with very wide eaves. From it project a front porch with shallow gable roof, supported by granite piers and enclosed by a granite wall with cast stone coping, and a long one-story stucco-faced flat roof wing on the south side elevation. Emphasizing the horizontal lines of the house is a wide frieze and a band of casement windows pushed up high under the eaves of the front elevation. Below these windows opening onto the front porch are wide French doors flanked with sidelights. Both the casement windows above and the French windows below are embellished with muntins in geometric Prairie Style motifs. The house is sited on an elevated lot and set well back from the street. A range of concrete steps located to the south of the front porch leads to a paved terrace and to the principal entryway, which in typical Prairie Style fashion, is set into the side of the house and is not visible from the street.

Statement of Significance

The Retan House at 2510 Broadway was designed by Charles L. Thompson ca. 1915. The design of this house reflects the strongest Frank Lloyd Wright influence of any home the firm designed. A shallow hipped roof with wide eaves tops the house. Concrete steps leading to the porch are set to the side and lead to the entrance which is not visible from the street. The horizontal emphasis of the house is accentuated by bands of Prairie Style windows. Elevated above street level, the Retan House is an unusually fine example of Prairie Style design in Arkansas by the Thompson firm.

Pu3174



Structures in Arkansas Represented in the
Charles L. Thompson Design Collection

Little Rock, Pulaski Co., Arkansas
Quadrangle Name: Little Rock, Ark.

Scale: 1:24,000

UTM Reference:	PU-091	15	566080/3843450
	PU-092	15	566040/3842840
	PU-093	15	566100/3842770
	PU-094	15	566030/3842630
	PU-095	15	566030/3842570
	PU-096	15	566020/3842460
	PU-101	15	566490/3842960
	PU-103	15	566920/3844180
	PU-104	15	566920/3844140
	PU-105	15	566820/3843500
	PU-111	15	567170/3844330
	PU-112	15	567210/3844330
	PU-113	15	567240/3844330
	PU-114	15	567080/3844510
	PU-118	15	564520/3843910
	PU-120	15	564610/3843060
	PU-121	15	566980/3844050
	PU-130	15	566380/3842960

