

United States Department of the Interior  
National Park Service

National Register of Historic Places  
Inventory—Nomination Form

For NPS use only
received
date entered

Continuation sheet 114 Item number 1,2,4,6, & 10 Page 1

INDIVIDUAL DATA SHEET

General Description

Code: PU-110	Congressional District: Second
Name: Little Rock Boys Club	Current Owner: Dr. Frank Kumpuris
Address: 8th & Scott	Address: 415 North University
County: Pulaski	Little Rock, Arkansas 72207

Architectural Information

Architectural Firm: Thompson, Sanders, and Ginocchio	
Date of Construction: 1930	Stylistic Influence: Colonial Revival
Original Use: Boys Club	Present Use: Office Space

Geographical Information

UTM Reference: 15 566830/3844330	Acreage: less than one
Verbal Boundary Description:	Original City of Little Rock Block 26, West 90' of Lots 1 and 2, all of lots 3 and 4 and North 2/3 of lot 5.

Condition

<input checked="" type="checkbox"/> Excellent	<input type="checkbox"/> Deteriorated	<input type="checkbox"/> Unaltered
<input type="checkbox"/> Good	<input type="checkbox"/> Ruins	<input checked="" type="checkbox"/> Altered
<input type="checkbox"/> Fair	<input type="checkbox"/> Unexposed	

EXP. 12/31/84

PUB1

United States Department of the Interior  
National Park Service

National Register of Historic Places  
Inventory—Nomination Form

For NPS use only
received
date entered

Continuation sheet

115

Item number 7 &amp; 8

Page 2

Code: PU-110

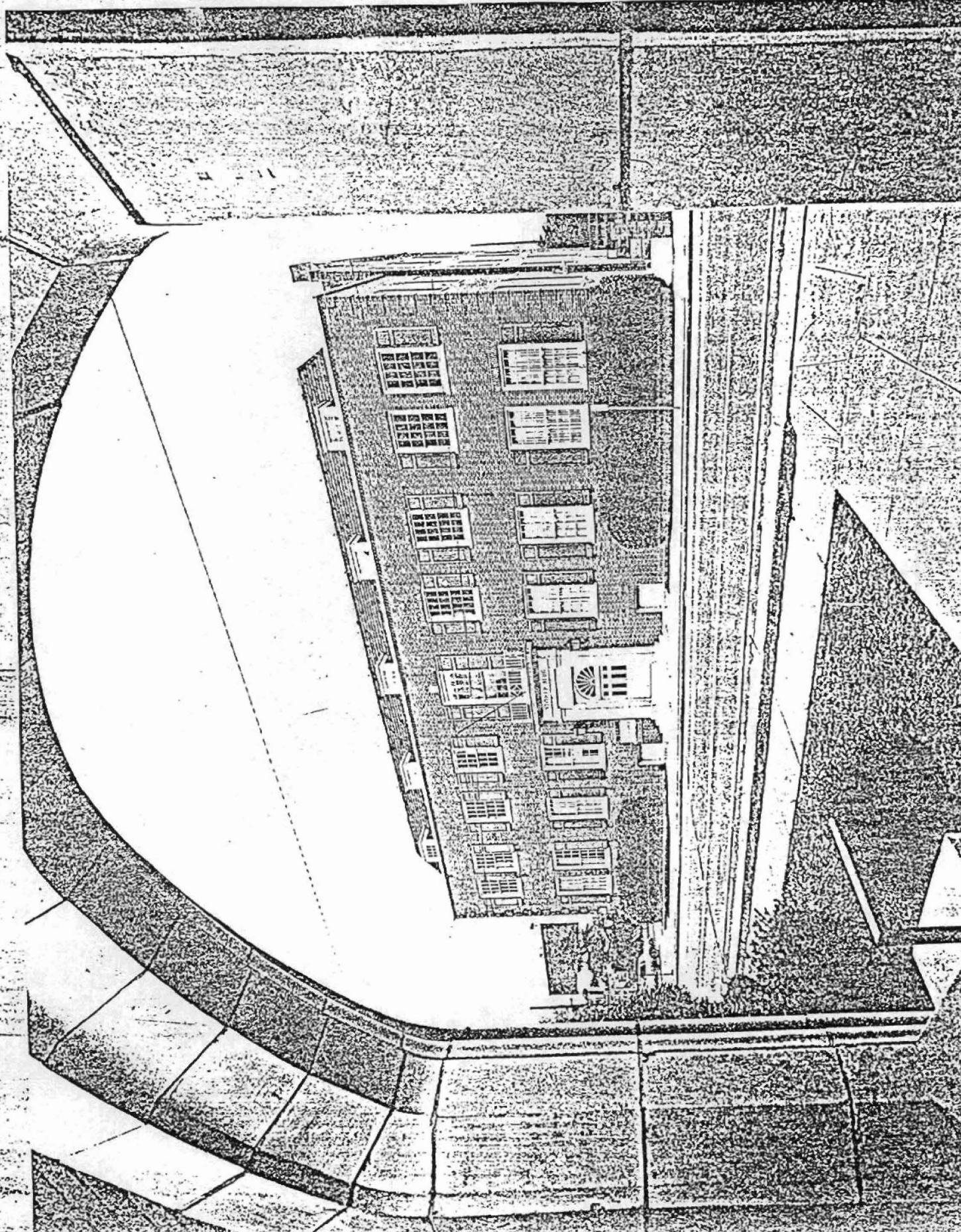
(8th and Scott, Little Rock, AR)

Physical Description

This 1930 design for a Boys Club reflects the continued popularity of the Colonial Revival style in the second quarter of the twentieth century. This long, rectangular, three-story-plus-basement structure is constructed of Flemish bond brick and is located in downtown Little Rock at the corner of Eighth and Scott Streets. The ten-bay facade faces Scott Street, with the third story recessed and capped with a mansard roof. From the side elevation on Eighth Street the structure's traditional silhouette of straight-edge gable ends is visible. Decorative interest is concentrated on the centrally located entrance in which a double leaf paneled door is crowned by a fanlight and framed by stone pilasters with simple capitals and bases. These pilasters support an entablature and the projecting cornice is embellished with a dentil molding. Forming a transition between the entrance and the large twelve-over-twelve pane sash window above, is a wrought-iron balustrade in an English neo-classical motif. Flat arches crown each of the sash windows. Those on the lower floor have twelve-over-twelve lights; those on the second floor have eight-over-eight lights. The third floor windows are small casement windows set within five gable roof dormers.

Statement of Significance

The Little Rock Boys Club Building was designed by the partnership of Thompson, Sanders and Ginocchio in 1930. The building is constructed of Flemish bond brick. Three stories in height, the third floor is recessed from the facade and is capped by a mansard roof. The focal point of the ten-bay facade is centered around the central entrance. A double leafed paneled door is topped by a fanlight and framed by stone pilasters which support an entablature. The Little Rock Boys Club Building shows an affinity for the Colonial Revival style popular in the second quarter of the twentieth century. The design is unique for its time period in this group of nominated structures and is a visual anchor in its streetscape.



Little Rock, Pulaski Co., Arkansas  
Quadrangle Name: Little Rock, Ark.  
Scale: 1:24,000

Reference:	PU-090	15	566020/3844140
	PU-102	15	567080/3844520
	PU-106	15	566960/3844810
	PU-108	15	566890/3844870
	PU-109	15	566710/3844330
	PU-110	15	566830/3844330
	PU-115	15	567280/3844220
	PU-117	15	565730/3844950
	PU-122	15	563060/3844220
	PU-126	15	563670/3843210
	PU-127	15	566340/3843400
	PU-128	15	566470/3843490
	PU-134	15	566280/3843710
	PU-135	15	566220/3843810
	PU-141	15	565880/3843170
	PU-142	15	565820/3842960
	PU-143	15	565970/3843430
	PU-144	15	565950/3843270
	PU-145	15	565940/3843220
	PU-148	15	565930/3843040
	PU-149	15	565980/3843040
	PU-150	15	565980/3842920
	PU-151	15	565980/3842820
	PU-152	15	565920/3842430
	PU-159	15	562730/3844410
	PU-163	15	565680/3844930
	PU-165	15	565700/3844960

