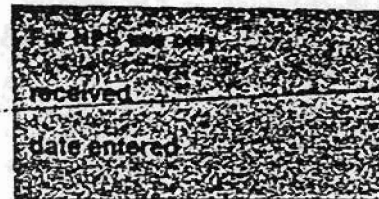


United States Department of the Interior  
National Park Service

National Register of Historic Places  
Inventory—Nomination Form



Continuation sheet 125 Item number 1, 2, 4, 6 & 10 Page 1

INDIVIDUAL DATA SHEET

General Description

Code: PU-108	Congressional District: Second
Name: B. P. O. E. Elks Club	Current Owner: H & M Realty Company
Address: 4th and Scott Little Rock, Arkansas	Address: 1315 East 26th Little Rock, Arkansas 72206
County: Pulaski	

Architectural Information

Architectural Firm: Theo Sanders	
Date of Construction: 1908	Stylistic Influence: Second Renaissance Revival
Original Use: B.P.O.E. Elks Club	Present Use: Women's City Club

Geographical Information

UTM Reference: 15 566890/3844870 Acreage: Less than one

Verbal Boundary Description: Original City of Little Rock  
Block 38, Lots 5 & 6

Condition

<input type="checkbox"/> Excellent	<input type="checkbox"/> Deteriorated	<input checked="" type="checkbox"/> Unaltered
<input checked="" type="checkbox"/> Good	<input type="checkbox"/> Ruins	<input type="checkbox"/> Altered
<input type="checkbox"/> Fair	<input type="checkbox"/> Unexposed	

United States Department of the Interior  
National Park Service

# National Register of Historic Places Inventory—Nomination Form

For NPS Use Only
received
date entered

Continuation sheet 126

Item number 7 &amp; 8

Page 2

Code: PU-108 (4th and Scott, Little Rock, AR)

## Physical Description

Built as a private clubhouse for the Benevolent Order of the Elks, this decorative, finely detailed three-story building provides an elegant focal point at the downtown Little Rock intersection of 4th and Scott Streets. Presenting a twentieth-century version of the Renaissance Revival, the structure was designed by Theo Sanders around 1908. Faced with an unusually attractive pinkish-red brick, the rectangular block has a five bay principal facade with a prominent overhanging cornice lined with slender decorative brackets. Narrow decorative metal vents appear just beneath the cornice. Crowning the facade is a parapet with cast stone coping embellished with a central panel with a carved, rounded centerpiece. Articulating the three floors are windows varying in size and shape. First floor fenestration of plate glass windows with sidelights and transoms set into large arched openings creates, along with the arched entrance, an arcade effect. Second story windows are paired single light sashes with cast stone lintels and decorative aprons with supporting brackets. Lining the third story are smaller paired single light sash windows. Slightly projecting brick panels extend upwards from the base of the aprons of second story windows to the cornice, forming vertical groupings of the two upper levels of fenestration.

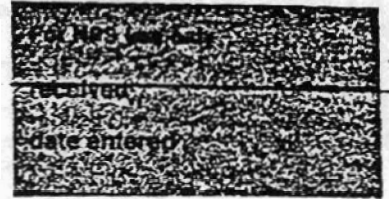
(continued)

## Statement of Significance

The B.P.O.E. Club at 4th and Scott in Little Rock was designed by Theo Sanders in 1908. Although Sanders was not with the Thompson firm at the time he designed this building, he added the original drawings to the firm's archives in 1927 when he joined Thompson and Ginocchio in partnership. One of the most richly decorative of the public buildings in the drawing collection, the B.P.O.E. Club is an elegant twentieth-century design reflecting the Second Renaissance Revival. Decorative details abound on all four elevations of the building. Windows interestingly vary in size and style. The focal point of the building is the main entrance on the west elevation. The double leaf doors with an arched transom are set into a decorative cast stone recessed arch. A second-story loggia above the entrance is framed by single Corinthian columns and pilaster with Corinthian capital. This loggia also features a balustrade of urn-shaped balusters. The building now houses the Little Rock Women's City Club and appears not to have been altered from its original design. The building provides an elegant focal point of the downtown intersection of 4th and Scott Streets.

United States Department of the Interior  
National Park Service

## National Register of Historic Places Inventory—Nomination Form



Continuation sheet 127

Item number 7

Page 3

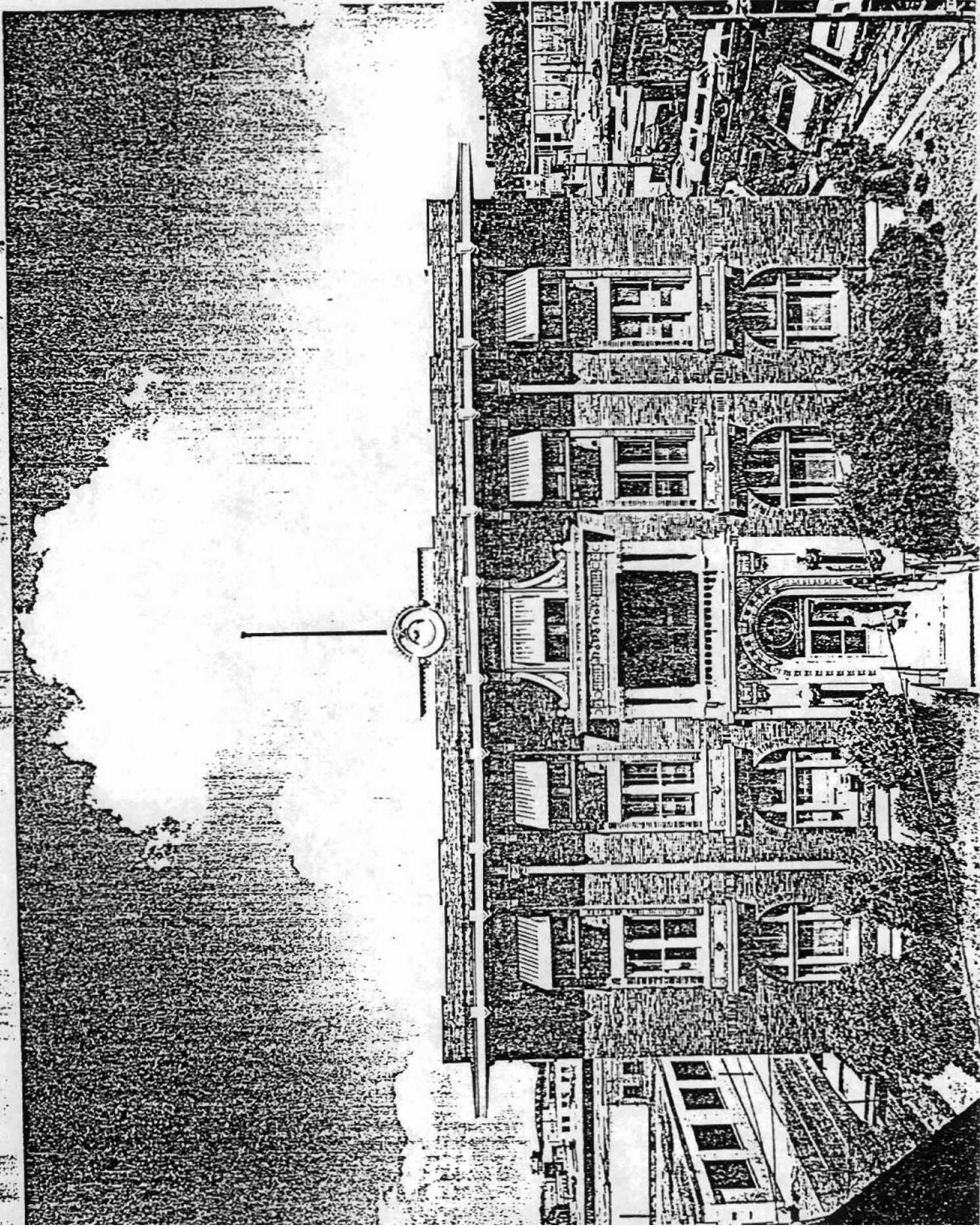
Code: PU-108 (4th and Scott, Little Rock, AR)

### Physical Description

(continuation)

The decorative interest of the central entrance bay extends upwards for the full three stories and provides a dramatic focal point in the principal elevation. The double leaf beveled plate glass door with arched transom is set in a cast stone recessed arch outlined by voussoirs and carved molding and corner blocks of foliate design. A second story loggia is framed by single Corinthian columns and a pilaster with Corinthian capital and a balustrade of urn-shaped balusters. The columns and pilasters support an entablature with "B.P.O.E." inscribed on the frieze. Crowning the projecting cornice of this loggia are large cast stone scroll-like volutes (infilled with carving in a cornucopia motif) which frame the third story. Completing this elegant three-story entrance ensemble are two tall period lamps with four clustered globes set atop the low cast stone piers which project from either side of the entrance.

### Statement of Significance



Little Rock, Pulaski Co., Arkansas  
Style Name: Little Rock, Ark.  
Scale: 1:24,000

Reference:	PU-090	15	566020/3844140
	PU-102	15	567080/3844520
	PU-106	15	566960/3844810
	PU-108	15	566890/3844870
	PU-109	15	566710/3844330
	PU-110	15	566830/3844330
	PU-115	15	567280/3844220
	PU-117	15	565730/3844950
	PU-122	15	563060/3844220
	PU-126	15	563670/3843210
	PU-127	15	566340/3843400
	PU-128	15	566470/3843490
	PU-134	15	566280/3843710
	PU-135	15	566220/3843810
	PU-141	15	565880/3843170
	PU-142	15	565820/3842960
	PU-143	15	565970/3843430
	PU-144	15	565950/3843270
	PU-145	15	565940/3843220
	PU-148	15	565930/3843040
	PU-149	15	565980/3843040
	PU-150	15	565980/3842920
	PU-151	15	565980/3842820
	PU-152	15	565920/3842430
	PU-159	15	562730/3844410
	PU-163	15	565680/3844930
	PU-165	15	565700/3844960

