

60-124-4110-56

UWID NO. 10-  
EXP: 12/31/84 PU31166

United States Department of the Interior  
National Park Service

National Register of Historic Places  
Inventory—Nomination Form

For NPS use only
received
date entered

Continuation sheet

128

Item number 1, 2, 4, 6, & 10 Page 1

INDIVIDUAL DATA SHEET

General Description

Code: PU-126

Congressional District: Second

Name: Roselawn Memorial Park Gatehouse Current Owner: Roselawn Memorial Park

Address: Roselawn Memorial Park  
2801 Asher

Address: 2801 Asher

County: Little Rock, Arkansas  
Pulaski

Little Rock, Arkansas 72204

Architectural Information

Architectural Firm: Thompson and Harding

Date of Construction: 1924

Stylistic Influence: Spanish, Colonial Revival  
Style

Original Use: Gatehouse to the cemetery Present Use: Gatehouse to the cemetery

Geographical Information

UTM Reference: 15 563670/3843210

Acreage: Less than one

Verbal Boundary Description: Part W $\frac{1}{4}$  SW S of Asher Avenue and W of MOP  
9 1N 12W RY sold to individuals

The boundaries of the nominated property extend 10 feet from the south, west and north exterior walls and 7 feet from the east wall.

Condition

Excellent  
 Good  
 Fair

Deteriorated  
 Ruins  
 Unexposed

Unaltered  
 Altered

EXP. 12/31/84

PU3166

**United States Department of the Interior  
National Park Service**

**National Register of Historic Places  
Inventory—Nomination Form**

For NPS Use Only
received
date entered

Continuation sheet 129

Item number 7 & 8

Page 2

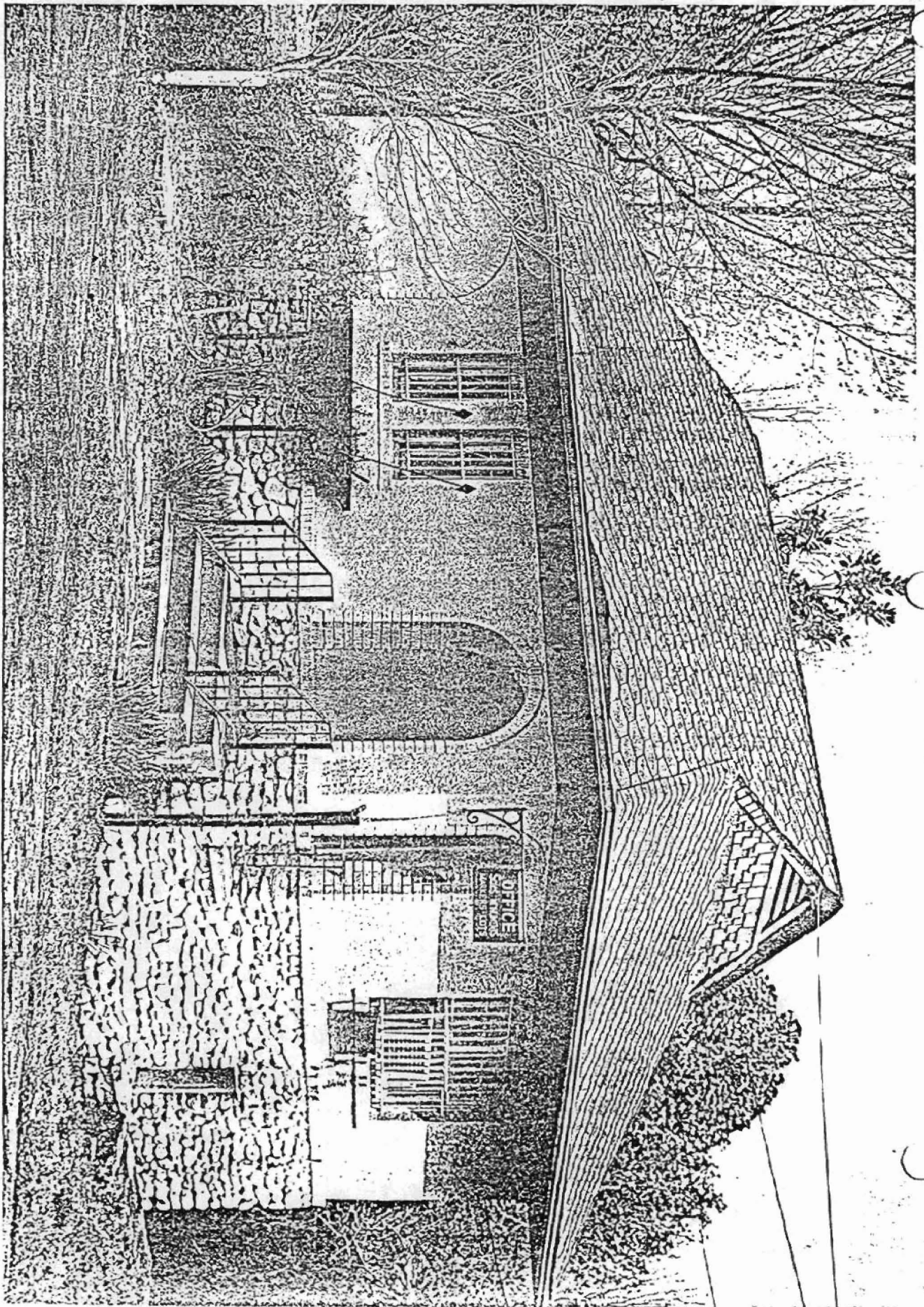
Code: PU-126 (2801 Asher, Little Rock, AR)

Physical Description

Designed by Thompson and Harding in 1924 as the office for a large cemetery, this small structure is located at the north entrance of Roselawn Memorial Park in Little Rock. The simple one-story rectangular building is faced with stucco and features an unusual foundation covering of cobblestones. Adding to the picturesque effect is the prominent gable end roof which forms an eyebrow window just over the arched recessed entryway. A porch with arched opening at the other end of the front elevation has been enclosed.

Statement of Significance

This small structure is a significant component of the thematic grouping both in terms of function - it is the only gatehouse represented in the collection - and design. The plans for the gatehouse are a unique combination of Spanish Mission design elements and elements associated with Richardsonian architecture of the late nineteenth century.



Little Rock, Pulaski Co., Arkansas  
 Quadrangle Name: Little Rock, Ark.  
 Scale: 1:24,000

Reference: PU-090 15 566020/3844140  
 PU-102 15 567080/3844520  
 PU-106 15 566960/3844810  
 PU-108 15 566890/3844870  
 PU-109 15 566710/3844330

PU-110 15 566830/3844330  
 PU-115 15 567280/3844220  
 PU-117 15 565730/3844950  
 PU-122 15 563060/3844220  
 PU-126 15 563670/3843210  
 PU-127 15 566340/3843400  
 PU-128 15 566470/3843490  
 PU-134 15 566280/3843710  
 PU-135 15 566220/3843810  
 PU-141 15 565880/3843170  
 PU-142 15 565820/3842960

PU-143 15 565970/3843430  
 PU-144 15 565950/3843270  
 PU-145 15 565940/3843220  
 PU-148 15 565930/3843040  
 PU-149 15 565980/3843040  
 PU-150 15 565980/3842920  
 PU-151 15 565980/3842820  
 PU-152 15 565920/3842430  
 PU-159 15 562730/3844410  
 PU-163 15 565680/3844930  
 PU-165 15 565700/3844960

