

United States Department of the Interior
National Park Service

National Register of Historic Places
Inventory—Nomination Form

EXP. 12/31/84
60-136-4110-61

For NPS use only
received
date entered

Continuation sheet

242

Item number 1, 2, 4, 6 & 10

Page 1

INDIVIDUAL DATA SHEET

General Description

Code: PU-104

Congressional District: Second

Name: Thurston House

Current Owner: Bailey Corporation

Address: 923 Cumberland
Little Rock; Arkansas

Address: 210 Gaines Place
Little Rock, Arkansas 72201

County: Pulaski

Architectural Information

Architectural Firm: Charles L. Thompson

Date of Construction: ca. 1900

Stylistic Influence: Queen Anne and Colonial
Revival

Original Use: Residence

Present Use: Residence

Geographical Information

UTM Reference: 15 566920/3844140

Acreage: Less than one

Verbal Boundary Description: Original City of Little Rock
Block 44, Lts. South ½ of 5,
all of 6

Condition

Excellent
 Good
 Fair

Deteriorated
 Ruins
 Unexposed

Unaltered
 Altered

United States Department of the Interior
National Park Service

National Register of Historic Places
Inventory—Nomination Form

Recorded
Date entered

Continuation sheet 243

Item number 7 & 8

Page 2

Code: PU-104

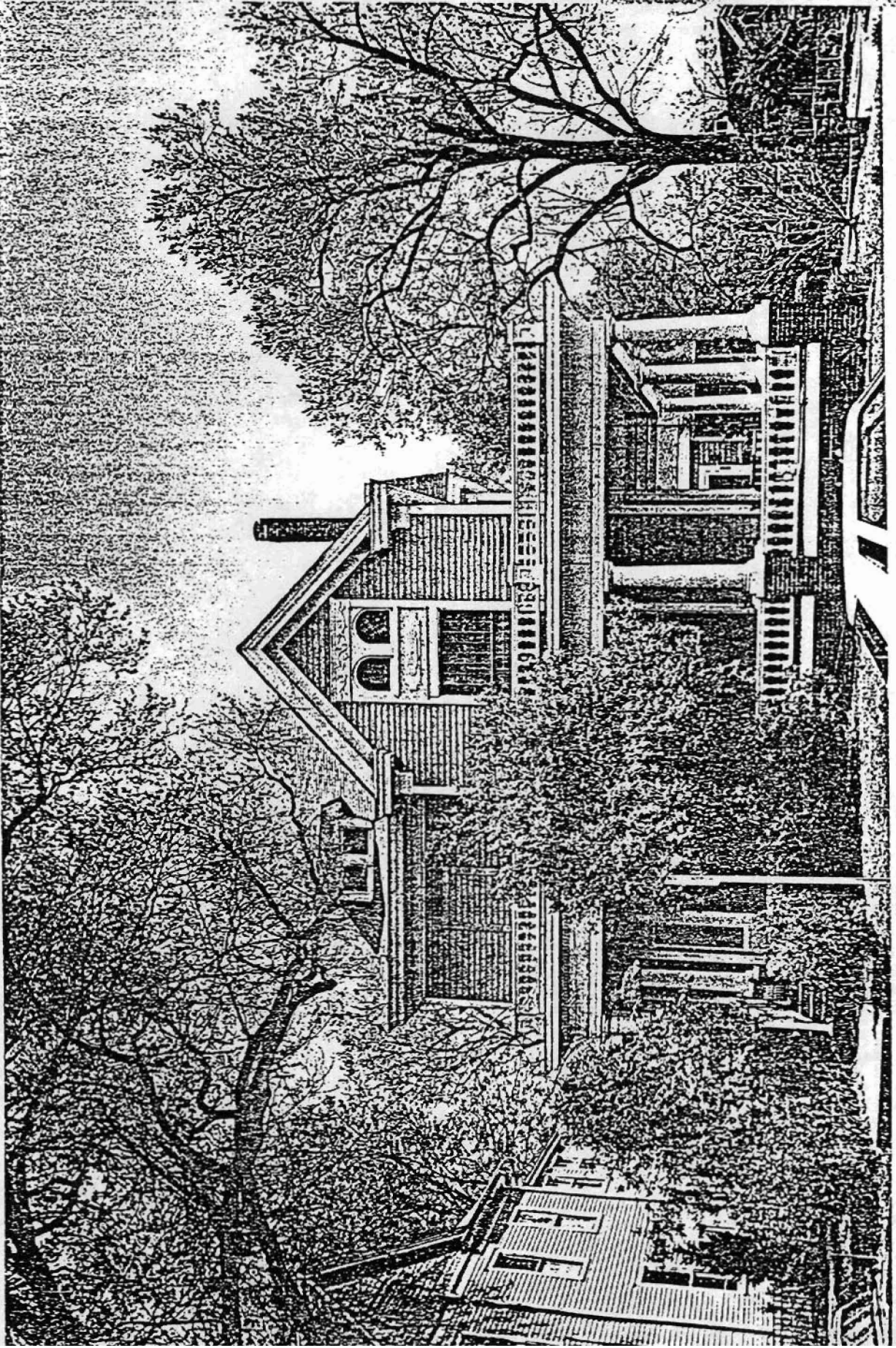
(923 Cumberland, Little Rock, AR)

Physical Description

Designed by Charles Thompson around 1900, this house represents the firm's preference during this period for houses which combine Queen Anne verticality and asymmetrical massing with Colonial Revival decorative details. Raised high on a brick foundation the tall two-story structure is faced with weatherboards, and capped by a tall hipped roof from which projects a gabled dormer and a cross gable section featuring prominent gable returns. A large porch wraps the front and south side elevations. Embellishing this porch are the supporting Tuscan columns and a full entablature enriched by dentil molding and a balustrade of turned spindles which lines the porch on both upper and lower levels. The front door and sidelights of beveled glass are framed by a fluted architrave with stylized Ionic pilasters. In a more Queen Anne vein is the decorative carved wood panel beneath two small arched windows which enriches the prominent cross gable.

Statement of Significance

The Thurston House at 923 Cumberland in Little Rock was designed by Charles L. Thompson ca. 1900. Located in the MacArthur Park Historic District, the Thurston House is an unusually formal and decorative version of many of the firm's transitional house designs featuring both Victorian and Colonial Revival elements. Decorative wood panels surrounding a second story window on the west facade serve as an unusual focal point on the house. Another unusually decorative feature on the Thurston House is the flat-roofed wrap-around porch which features Tuscan columns, a full entablature, and an upper balustrade of turned spindles. The vertical massing of the body of the house combined with the dominant porch with Colonial Revival detailing make the Thurston House distinctive in its neighborhood setting of simple foursquare designs.





Structures in Arkansas Represented in the Charles L. Thompson Design Collection

Little Rock, Pulaski Co., Arkansas
 Quadrangle Name: Little Rock, Ark.
 Scale: 1:24,000

UTM Reference:	PU-091	15	566080/3843450
	PU-092	15	566040/3842840
	PU-093	15	566100/3842770
	PU-094	15	566030/3842630
	PU-095	15	566030/3842570
	PU-096	15	566020/3842460
	PU-101	15	566490/3842960
	PU-103	15	566920/3844180
	PU-104	15	566920/3844140
	PU-105	15	566820/3843500
	PU-111	15	567170/3844330
	PU-112	15	567210/3844330
	PU-113	15	567240/3844330
	PU-114	15	567080/3844510
	PU-118	15	564520/3843910
	PU-120	15	564610/3843060
	PU-121	15	566980/3844050
	PU-130	15	566380/3842960

