

United States Department of the Interior
National Park Service

National Register of Historic Places
Inventory—Nomination Form

For NPS use only
received
date entered

Continuation sheet 78 Item number 1,2,4,6, & 10 Page 1

INDIVIDUAL DATA SHEET

General Description

Code: PU-115

Congressional District: Second

Name: St. Edwards Church
Address: 823 Sherman
Little Rock, Arkansas
County: Pulaski

Current Owner: St. Edwards Church
c/o Most Reverend Andrew J. McDonald
Address: 815 Sherman
Little Rock, Arkansas 72202

Architectural Information

Architectural Firm: Charles L. Thompson

Date of Construction: 1901

Stylistic Influence: Gothic

Original Use: Church

Present Use: Church

Geographical Information

UTM Reference: 15 567280/3844220

Acreage: Less than one

Verbal Boundary Description: Johnson's Addition Pt. Block 3,
Beginning SE corner W 290' N300'
E 140' S 100' E 150' S 200 to beginning.

Condition

Excellent
 Good
 Fair

Deteriorated
 Ruins
 Unexposed

Unaltered
 Altered

United States Department of the Interior
National Park Service

National Register of Historic Places
Inventory—Nomination Form

For NPS use only
received
date entered

Continuation sheet

79

Item number 7 & 8

Page 2

Code: PU-115

(823 Sherman, Little Rock, AR)

Physical Description

Rising directly from the sidewalk on a corner lot, St. Edwards Catholic Church, designed by Charles L. Thompson around 1901, is one of the most correct and most elaborately ornamented of the firm's several Gothic Revival churches. Placed on a rock-faced granite foundation, faced with smooth gray-brown brick, the church is characterized by the traditional massing of nave, transept and entrance towers. Twin symmetrical towers flank the recessed central bay; the drawings indicate two identical spires were to crown these towers, but, unfortunately they were never built. The traditional tri-partite entrance features three portals recessed within multiple stone moldings in Gothic arch shapes, flanked by slender colonnettes with foliated capitals, with tympani composed of stone tracery in quatrefoil cusps infilled with stained glass. Articulating the central portal are slender stone piers capped with crockets and a tall triangular outline infilled with quatrefoil tracery and crowned by stone cross. Just above the large rose window a single lancet window is ornamented with good molding, accentuating the stone cross at the central gable peak. The towers are framed by slender brick buttresses with stone coping and feature horizontal bands of cut stone inset with simple blocks which frame twin louvered lancet shaped openings.

(continued)

Statement of Significance

Charles L. Thompson's 1901 design for St. Edwards Church in Little Rock is the most academically accurate in the collection. Although the firm designed several Gothic Revival styled churches, St. Edwards Church reflects a tendency toward a more high-style design. Twin symmetrical towers flank a recessed bay. The drawings show identical spires on the towers, but they were never built. Located in the MacArthur Park Historic District, St. Edwards Church remains unaltered since its 1901 construction. With the original drawings in archival storage and the knowledge of the architect, the church has become a more important historic building within the MacArthur Park District.

United States Department of the Interior
National Park Service

National Register of Historic Places Inventory—Nomination Form

For NPS use only
received
date entered

Continuation sheet

80

Item number 7

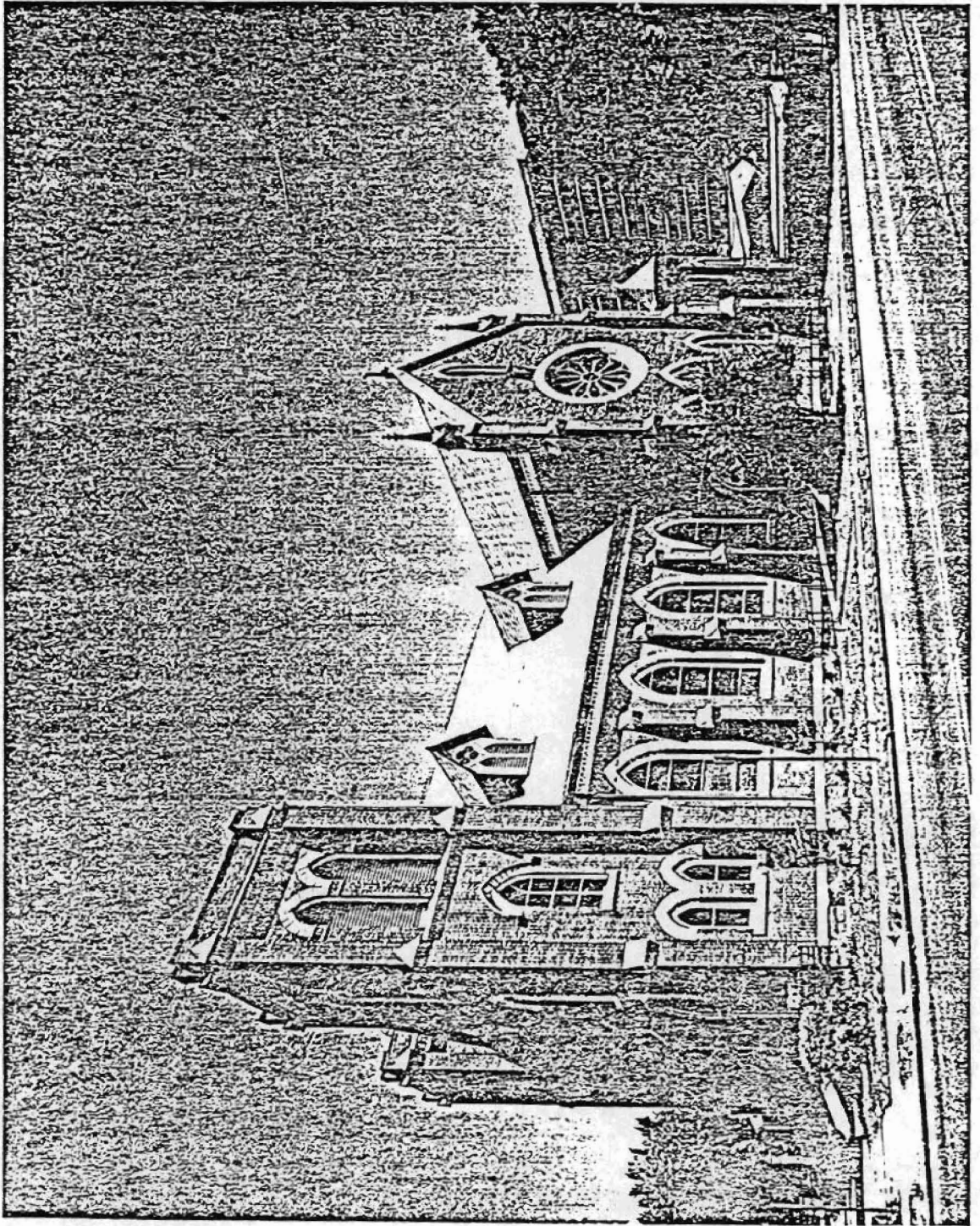
Page 3

Code:Physical Description

(continued)

Two Victorian touches are seen in the steep gable roof dormers with wooden quarterfoil windows and lancet shaped louvers and in the variegated gray slate roof laid in herringbone patterns. Outstanding features of this church are the three rose windows of stained glass which appear in the gables of the front and both transepts and the beautiful spreading, foliate pattern in the wrought iron work embellishing the hinges of the solid entrance doors.

Statement of Significance



ock, Pulaski Co., Arkansas
angle Name: Little Rock, Ark.
e: 1:24,000

rence:	PU-090	15	566020/3844140
	PU-102	15	567080/3844520
	PU-106	15	566960/3844810
	PU-108	15	566890/3844870
	PU-109	15	566710/3844330
	PU-110	15	566830/3844330
	PU-115	15	567280/3844220
	PU-117	15	565730/3844950
	PU-122	15	563060/3844220
	PU-126	15	563670/3843210
	PU-127	15	566340/3843400
	PU-128	15	566470/3843490
	PU-134	15	566280/3843710
	PU-135	15	566220/3843810
	PU-141	15	565880/3843170
	PU-142	15	565820/3842960

	PU-143	15	565970/3843430
	PU-144	15	565950/3843270
	PU-145	15	565940/3843220
	PU-148	15	565930/3843040
	PU-149	15	565980/3843040
	PU-150	15	565980/3842920
	PU-151	15	565980/3842820
	PU-152	15	565920/3842430
	PU-159	15	562730/3844410
	PU-163	15	565680/3844930
	PU-165	15	565700/3844960

