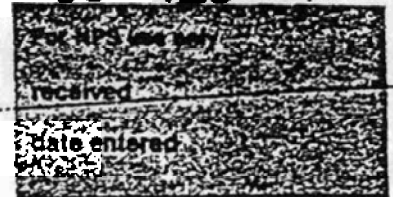


EXP 12/31/84
60-160-4110-61

States Department of the Interior
National Park Service
**National Register of Historic Places
Inventory—Nomination Form**



Continuation sheet 290 Item number 1, 2, 4 & 6 Page 1

INDIVIDUAL DATA SHEET

General Description

Code: PU-142 Congressional District: Second
Name: Sanders House Current Owner: Michael and Sharon Reel
Address: 2100 Gaines 2100 Gaines
Little Rock, Arkansas Address: Little Rock, AR
County: Pulaski

Architectural Information

Architectural Firm: Theo Sanders
Date of Construction: 1917 Stylistic Influence: Colonial Revival
Original Use: Residence Present Use: Residence

Geographical Information

UTM Reference: 15 565820/3842960 Acreage: Less than one
Verbal Boundary Description: Wright's Addition
Block 7
North 1/4 of Lot 11, -
All of Lot 12

Condition

Excellent Deteriorated Unaltered
 Good Ruins Altered
 Fair Unexposed

United States Department of the Interior
National Park Service

National Register of Historic Places Inventory—Nomination Form

For NPS use only
received
date entered

Continuation sheet 291

Item number 7 & 8

Page 2

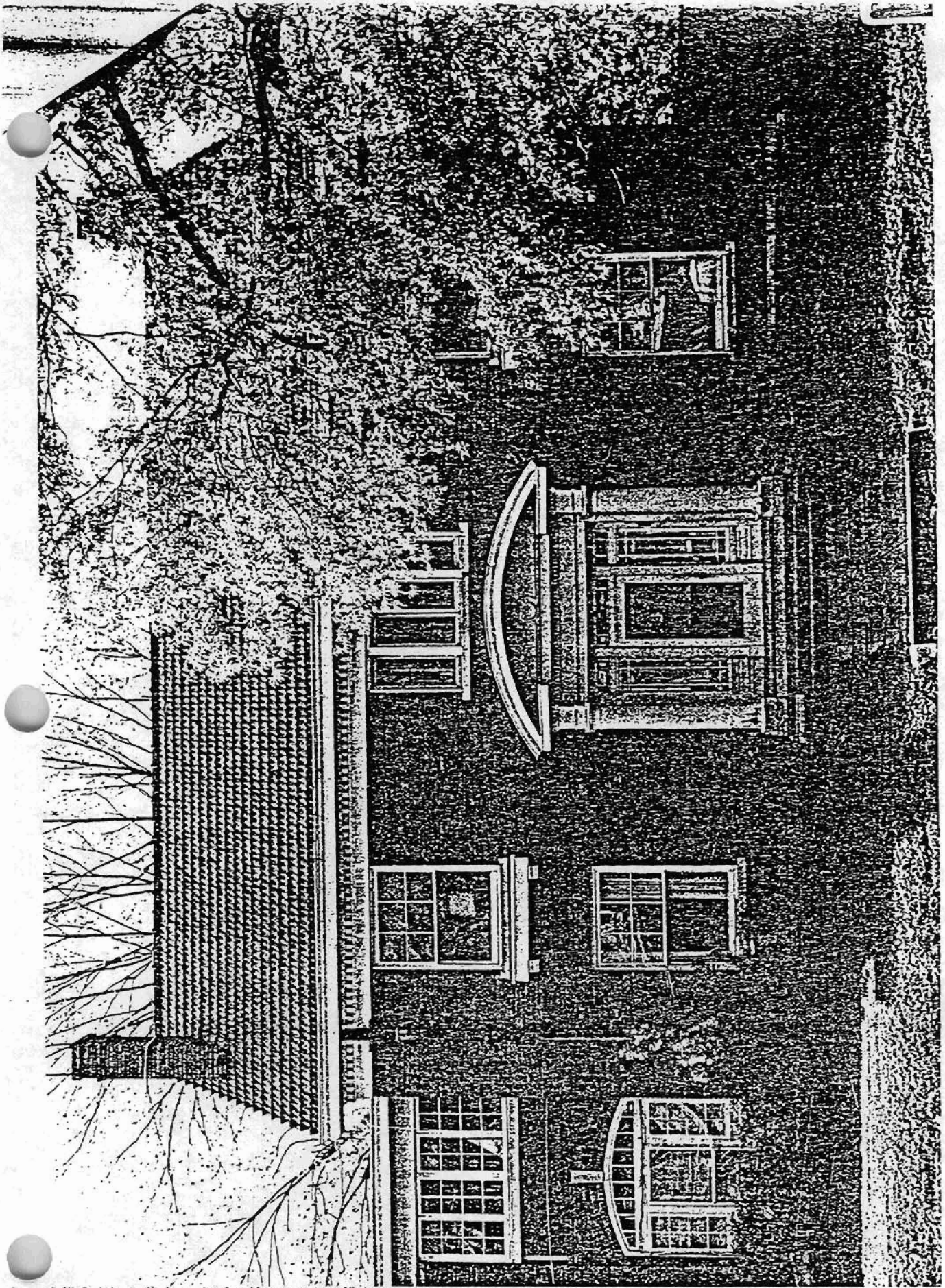
Code: PU-142 (2100 Gaines, Little Rock, AR)

Physical Description

Designed by Theo Sanders in 1917, this two-story house faced with brown brick is located on an open, level lot in Little Rock. Overall, this house is appealing in its refined, understated simplicity. The simple rectangular mass of the main block is capped by a steep terra-cotta gable end roof. A two-story block with low hipped roof forms a subsidiary mass, recessed from the facade, on the south side elevation. Now enclosed, this was originally a two-story porch. The two interior brick chimneys have corbeled caps. The principal decorative details are in the Classical Revival vein. Framing the entrance, two slender Tuscan columns support a segmental arch pediment which frames an entablature embellished with dentil molding. Dentil molding also appears on the frieze at the roofline and in raking cornice of the entrance pediment. Above the entrance is placed a group of four casement windows with strips of leaded glass resembling Prairie Style designs. Casement windows appear on the second story of the side porch as well. Others are six-over-one lights sash windows.

Statement of Significance

The Sanders House at 2100 Gaines was designed by Theo Sanders in 1917. This two-story house was influenced by Colonial Revival styling and is noteworthy for its refined, and handsomely detailed simplicity. The focal point of the Sanders House is the formal entrance which is framed by two slender Tuscan columns supporting a segmental arch pediment. The Sanders House, as part of the collection of drawings, is a significant Colonial Revival design in the historic downtown residential area of Little Rock.



Pulaski Co., Arkansas

City Name: Little Rock, Ark.

Scale: 1:24,000

Reference:	PU-090	15	566020/3844140
	PU-102	15	567080/3844520
	PU-106	15	566960/3844810
	PU-108	15	566890/3844870
	PU-109	15	566710/3844330

	PU-110	15	566830/3844330
	PU-115	15	567280/3844220
	PU-117	15	565730/3844950
	PU-122	15	563060/3844220
	PU-126	15	563670/3843210
	PU-127	15	566340/3843400
	PU-128	15	566470/3843490
	PU-134	15	566280/3843710
	PU-135	15	566220/3843810
	PU-141	15	565880/3843170
	PU-142	15	565820/3842960

	PU-143	15	565970/3843430
	PU-144	15	565950/3843270
	PU-145	15	565940/3843220
	PU-148	15	565930/3843040
	PU-149	15	565980/3843040
	PU-150	15	565980/3842920
	PU-151	15	565980/3842820
	PU-152	15	565920/3842430
	PU-159	15	562730/3844410
	PU-163	15	565680/3844930
	PU-165	15	565700/3844960

