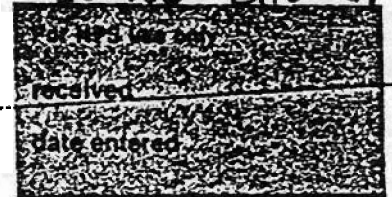


EXP 12/31/84
60-166-110-61

United States Department of the Interior
National Park Service

National Register of Historic Places
Inventory—Nomination Form



Continuation sheet 303 Item number 1,2,4,6, & 10 Page 1

INDIVIDUAL DATA SHEET

General Description

Code: PU-150	Congressional District: Second
Name: England House	Current Owner: Victoria Thomas
Address: 2121 Arch Little Rock, Arkansas	Address: I-55 & Ingram West Memphis, Arkansas 72301
County: Pulaski	

Architectural Information

Architectural Firm: Charles L. Thompson	
Date of Construction: ca. 1917	Stylistic Influence: Prairie/ Colonial Revival
Original Use: Residence	Present Use: Residence

Geographical Information

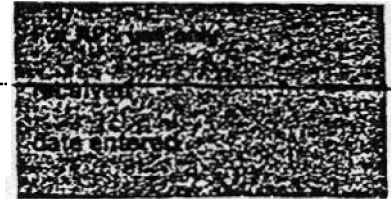
UTM Reference: 15 565980/3842920	Acreage: Less than one
Verbal Boundary Description: Fulton Addition Block 16, Lot 5, 6	

Condition

<input checked="" type="checkbox"/> Excellent	<input type="checkbox"/> Deteriorated	<input type="checkbox"/> Unaltered
<input type="checkbox"/> Good	<input type="checkbox"/> Ruins	<input checked="" type="checkbox"/> Altered
<input type="checkbox"/> Fair	<input type="checkbox"/> Unexposed	

United States Department of the Interior
National Park Service

National Register of Historic Places
Inventory—Nomination Form



Continuation sheet

304

Item number 7 & 8

Page 2

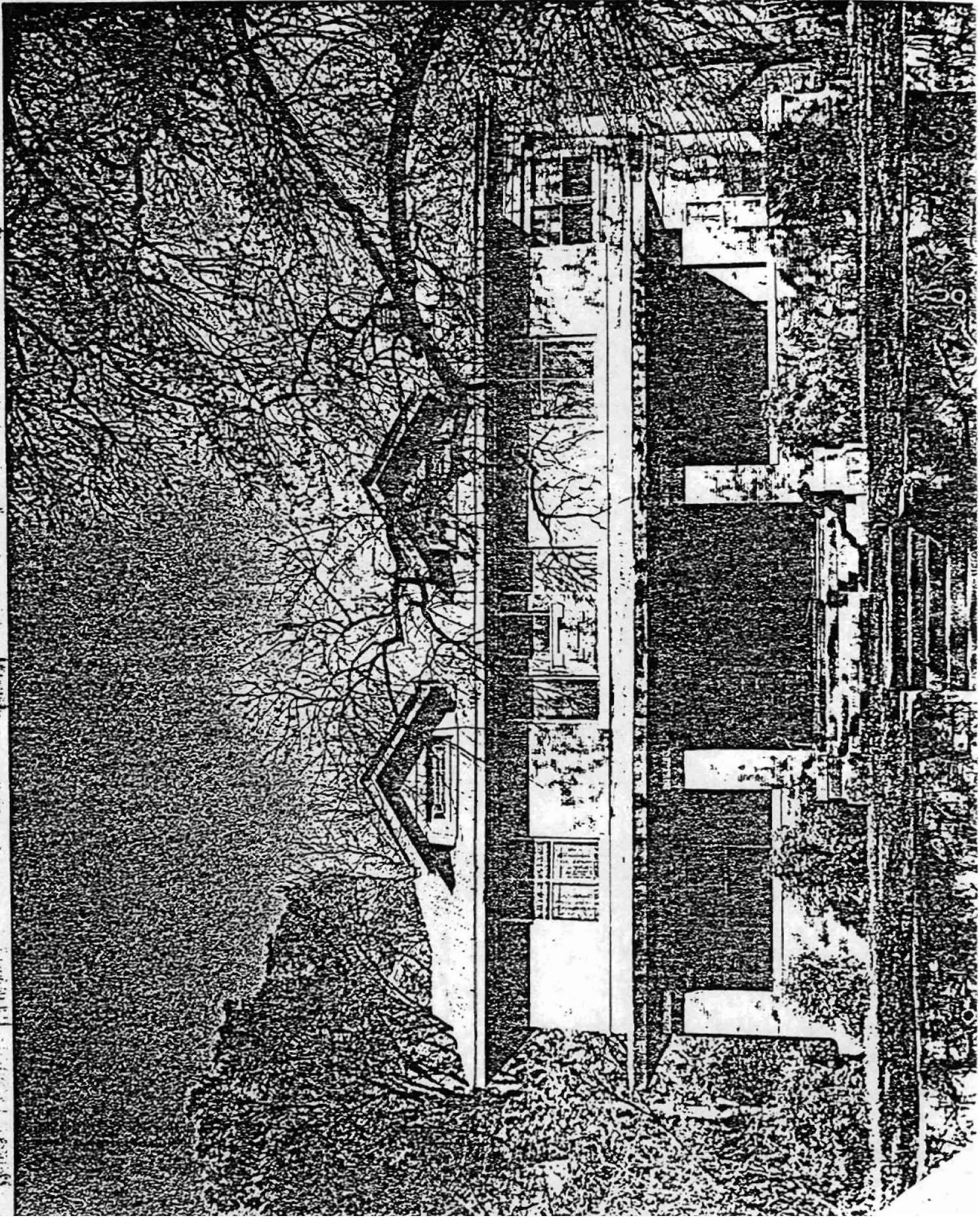
Code: PU-150 (2121 Arch, Little Rock, AR)

Physical Description

Raised high above the street level on a terraced corner lot this large two-story house designed by Charles Thompson has few decorative details to detract from its broad and simple massing. The three bay house, faced with narrow gray-brown brick, presents a strictly symmetrical facade to the street with a dominant horizontal emphasis. The full-length hipped roof front porch is supported by plain brick piers which frame the low brick walls of the porch, affording a sense of privacy and shade. Two low gable-roofed dormers with narrow, horizontally aligned windows and overhanging eaves with exposed purlins are a prominent feature. Similar dormers appear on each elevation. The broad, horizontal emphasis and the overhanging roof recall the Prairie Style, but a Classical Revival note is interjected in the once open two-story porch which projects on the south. Here two monumental Tuscan columns support the porch, now enclosed and faced with stucco. Aside from the multi-paned sidelights of the door, all windows are of wide proportions with six-over-one lights.

Statement of Significance

Charles Thompson designed the Shelby England House circa 1917. The style of the house is difficult to assess although it has features identified with the Colonial Revival and Prairie Styles. The house sits unobtrusively on the streetscape thus giving it a sense of privacy nicely reinforced by the low brick walls that surround the porch. The England House is a fine example of Thompson's work with the less affluent clients.



Little Rock, Pulaski Co., Arkansas

Quadrangle Name: Little Rock, Ark.

Scale: 1:24,000

Reference:	PU-090	15	566020/3844140
	PU-102	15	567080/3844520
	PU-106	15	566960/3844810
	PU-108	15	566890/3844870
	PU-109	15	566710/3844330

	PU-110	15	566830/3844330
	PU-115	15	567280/3844220
	PU-117	15	565730/3844950
	PU-122	15	563060/3844220
	PU-126	15	563670/3843210
	PU-127	15	566340/3843400
	PU-128	15	566470/3843490
	PU-134	15	566280/3843710
	PU-135	15	566220/3843810
	PU-141	15	565880/3843170
	PU-142	15	565820/3842960

	PU-143	15	565970/3843430
	PU-144	15	565950/3843270
	PU-145	15	565940/3843220
	PU-148	15	565930/3843040
	PU-149	15	565980/3843040
	PU-150	15	565980/3842920
	PU-151	15	565980/3842820
	PU-152	15	565920/3842430
	PU-159	15	562730/3844410
	PU-163	15	565680/3844930
	PU-165	15	565700/3844960

