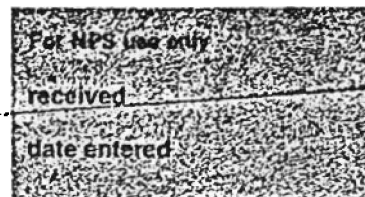


United States Department of the Interior  
National Park Service

National Register of Historic Places  
Inventory—Nomination Form



Continuation sheet

301

Item number 1,2,4,6, & 10

Page 1

INDIVIDUAL DATA SHEET

General Description

Code: PU-149

Congressional District: Second

Name: Marshall House

Current Owner: Calvin D. Biggers

Address: 2009 Arch

Little Rock, Arkansas

Address: 2009 Arch

Little Rock, Arkansas 72206

County: Pulaski

Architectural Information

Architectural Firm: Charles L. Thompson

Date of Construction: 1908

Stylistic Influence: Georgian Revival

Original Use: Residence

Present Use: Residence

Geographical Information

UTM Reference: 15 565980/3843040

Acreage: Less than one

Verbal Boundary Description: Fulton's Addition  
Block 9, Lot South 1/2  
of 2 and all of 3.

Condition

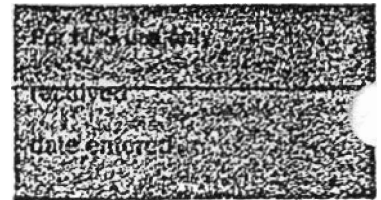
Excellent  
 Good  
 Fair

Deteriorated  
 Ruins  
 Unexposed

Unaltered  
 Altered

**United States Department of the Interior  
National Park Service**

**National Register of Historic Places  
Inventory—Nomination Form**



Continuation sheet 302

Item number 7 & 8

Page 2

Code: PU-149

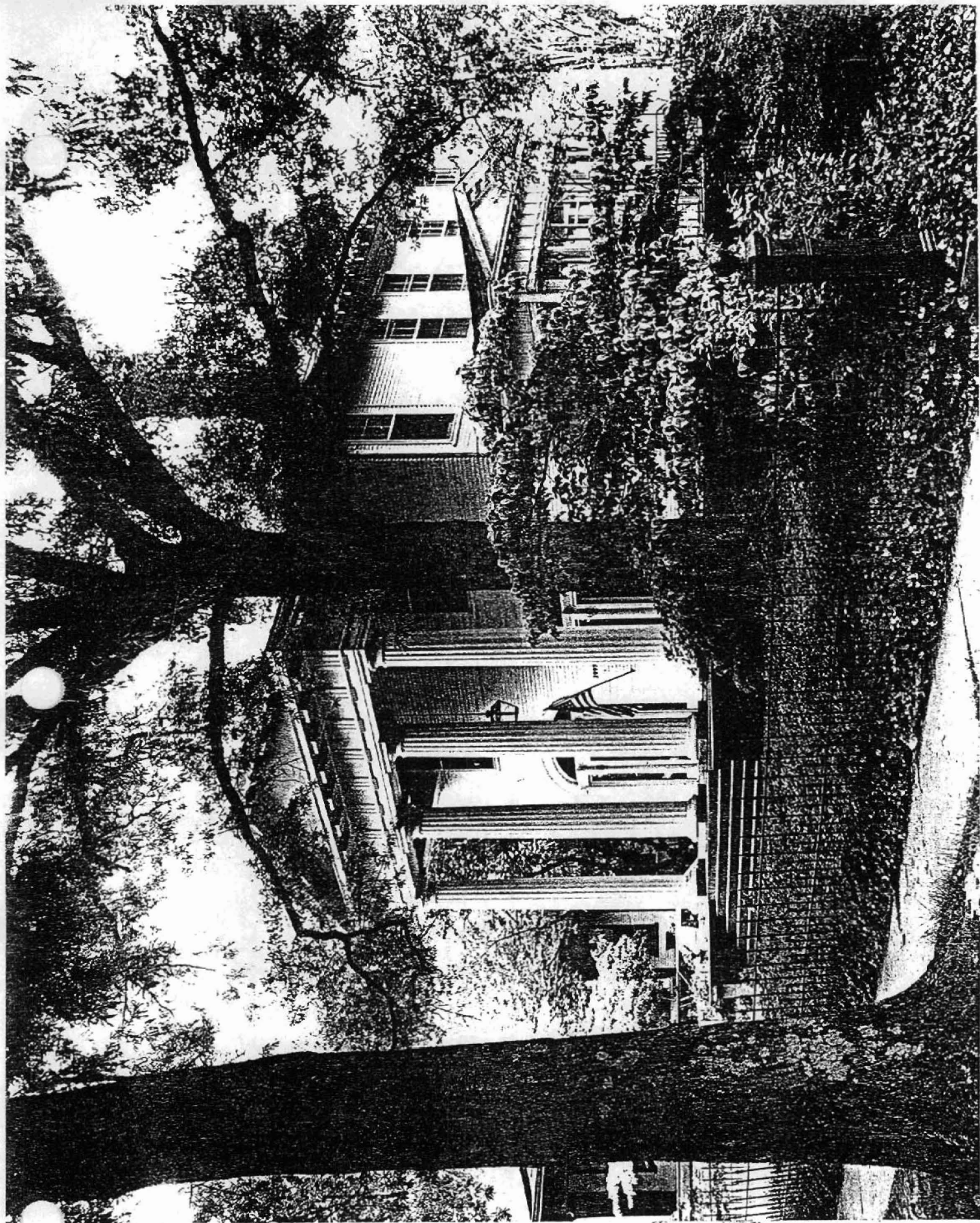
(2009 Arch, Little Rock, AR)

Physical Description

Located in a neighborhood of houses in varying architectural styles and situated on a lot of ordinary size this house, designed around 1908 by the Charles Thompson firm, presents a formal and imposing facade in relation to those around it. A hipped gray slate roof with exposed rafters crowns the two-bay block faced with narrow weatherboard; an open porch with gable roof projects from the main block on the south side elevation. Distinguishing this house is the simple front with monumental fluted Roman Doric-like columns with torus bases supporting a full Doric entablature with frieze embellished with guttae, triglyphs and metopes. Modillions line the cornice and the raking cornice of the pediment. The front door and adjacent French doors feature sidelights with tracery, which are crowned with dentil molding and elliptical arch fanlights with keystones. Both doorway and French doors are flanked by pilasters with Corinthian capitals. Windows are sash variety with six-over-one lights.

Statement of Significance

Charles L. Thompson's 1908 design for the Marshall House at 2009 Arch Street in Little Rock features details which are the most academically correct for his classically designed houses. Dominating the two-story rectangular house is a large temple front supported by Roman Doric-like columns with torus bases. The portico features a full Doric entablature with a frieze embellished with guttae, triglyphs and metopes. Two separate entrances with ornate fanlights and pilasters are another unusual feature of the front (west) facade. Located in one of Little Rock's most historic neighborhoods, the Marshall House is the most monumental and academic house in the area.



Structures in Arkansas Represented in the

Charles L. Thompson Design Coll. tion

Little Rock, Pulaski Co., Arkansas  
 Quadrangle Name: Little Rock, Ark.  
 Scale: 1:24,000  
 Reference:

PU-090	15	566020/3844140
PU-102	15	567080/3844520
PU-106	15	566960/3844810
PU-108	15	566890/3844870
PU-109	15	566710/3844330
PU-110	15	566830/3844330
PU-115	15	567280/3844220
PU-117	15	565730/3844950
PU-122	15	563060/3844220
PU-126	15	563670/3843210
PU-127	15	566340/3843400
PU-128	15	566470/3843490
PU-134	15	566280/3843710
PU-135	15	566220/3843810
PU-141	15	565880/3843170
PU-142	15	565820/3842960
PU-143	15	565970/3843430
PU-144	15	565950/3843270
PU-145	15	565940/3843220
PU-148	15	565930/3843040
PU-149	15	565980/3843040
PU-150	15	565980/3842920
PU-151	15	565980/3842820
PU-152	15	565920/3842430
PU-159	15	562730/3844410
PU-163	15	565680/3844930
PU-165	15	565700/3844960

