

EXP. 12/31/84

60-163-2110-61

United States Department of the Interior
National Park Service

National Register of Historic Places
Inventory—Nomination Form



Continuation sheet

297

Item number 1,2,4,6, & 10

Page 1

INDIVIDUAL DATA SHEET

General Description

Code: PU-145

Congressional District: Second

Name: Schaer House

Current Owner: Brown Properties, Inc.

Address: 1862 Arch
Little Rock, ArkansasAddress: 1862 Arch
Little Rock, Arkansas 72206

County: Pulaski

Architectural Information

Architectural Firm: Thompson and Harding

Date of Construction: 1923

Stylistic Influence: Craftsman

Original Use: Residence

Present Use: Residence

Geographical Information

UTM Reference: 15 565940/3843220

Acreage: Less than one

Verbal Boundary Description: Wrights Addition
Block 3, Lot 10

Condition

Excellent
 Good
 Fair

Deteriorated
 Ruins
 Unexposed

Unaltered
 Altered

United States Department of the Interior
National Park Service

National Register of Historic Places Inventory—Nomination Form

FBI No. _____
received _____
date entered _____

Continuation sheet 298

Item number 7&8

Page 2

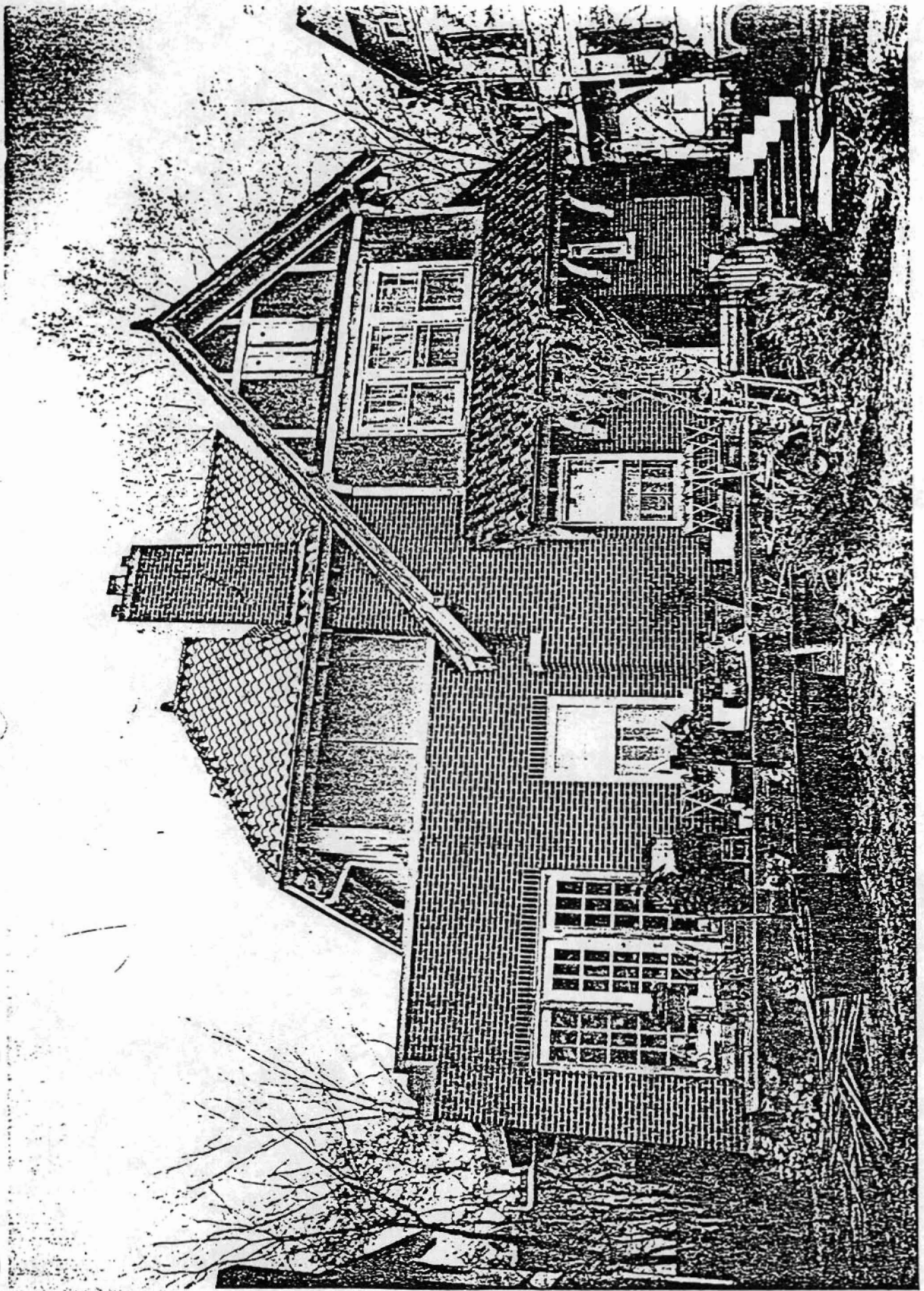
Code: PU-145 (1862 Arch, Little Rock, AR)

Physical Description

A broad cross gable section with steep roof which slants diagonally to enclose an exterior chimney adds a picturesque element to this two-story brick house designed by the Thompson and Harding firm in 1923. It is located on an average size plot on Arch Street in Little Rock. Several elements seen in this house are familiar ones in the firm's Craftsman-influenced houses of medium size: the front cross gable with pseudo half-timbering which projects from a terra-cotta hipped roof main block; a porte-cochere on the north side elevation; large brackets at the eaves. However, the front porch is exceptional, being only an entrance porch covered with shed roof with brackets. A side porch (on the north elevation) with long casement windows and a French door provide easy access to the low terrace which substitutes for the front porch. Another unusual feature of this design is the rather high, plain parapet of the brick wall enclosing the side porch and defining the south end of the front elevation. The broad horizontal line created by this wall stabilizes the strong diagonal accent of the front cross gable.

Statement of Significance

Designed designed the latter part of the Thompson and Harding partnership, the Schaer House at 1862 Arch in Little Rock represents still another variation of a relatively modest two-story Craftsman Style-influenced house. The small front porch beneath the broad cross gable and the plain parapet wall balancing the asymmetrical gable roof of the cross gable are unusual features in the firm's repertoire of Craftsman-influenced motifs.



Little Rock, Pulaski Co., Arkansas
Quadrangle Name: Little Rock, Ark.
Scale: 1:24,000

Reference:	PU-090	15	566020/3844140
	PU-102	15	567080/3844520
	PU-106	15	566960/3844810
	PU-108	15	566890/3844870
	PU-109	15	566710/3844330

	PU-110	15	566830/3844330
	PU-115	15	567280/3844220
	PU-117	15	565730/3844950
	PU-122	15	563060/3844220
	PU-126	15	563670/3843210
	PU-127	15	566340/3843400
	PU-128	15	566470/3843490
	PU-134	15	566280/3843710
	PU-135	15	566220/3843810
	PU-141	15	565880/3843170
	PU-142	15	565820/3842960

	PU-143	15	565970/3843430
	PU-144	15	565950/3843270
	PU-145	15	565940/3843220
	PU-148	15	565930/3843040
	PU-149	15	565980/3843040
	PU-150	15	565980/3842920
	PU-151	15	565980/3842820
	PU-152	15	565920/3842430
	PU-159	15	562730/3844410
	PU-163	15	565680/3844930
	PU-165	15	565700/3844960

