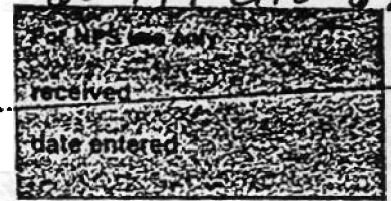


United States Department of the Interior  
National Park Service

# National Register of Historic Places Inventory—Nomination Form



Continuation sheet 264 Item number 1,2,4,6, & 10 Page 1

## INDIVIDUAL DATA SHEET

### General Description

Code: PU-127	Congressional District: Second
Name: Turner House	Current Owner: J. Roland Anderson, M. D.
Address: 1701 Center Little Rock, Arkansas	Address: 1701 Center Little Rock, Arkansas
County: Pulaski	

### Architectural Information

Architectural Firm: Charles L. Thompson	
Date of Construction: 1904-05	Stylistic Influence: Colonial Revival
Original Use: Residence	Present Use: Residence

### Geographical Information

UTM Reference: 15 566340/3843400	Acreage: Less than one
Verbal Boundary Description: Original City of Little Rock Block 189, Lots 1 and 2	

Condition N/A See #8

Excellent  
 Good  
 Fair

Deteriorated  
 Ruins  
 Unexposed

Unaltered  
 Altered

United States Department of the Interior  
National Park Service

National Register of Historic Places  
Inventory—Nomination Form

For NPS use only
received
date entered

Continuation sheet

25

Item number 7 &amp; 8

Page 2

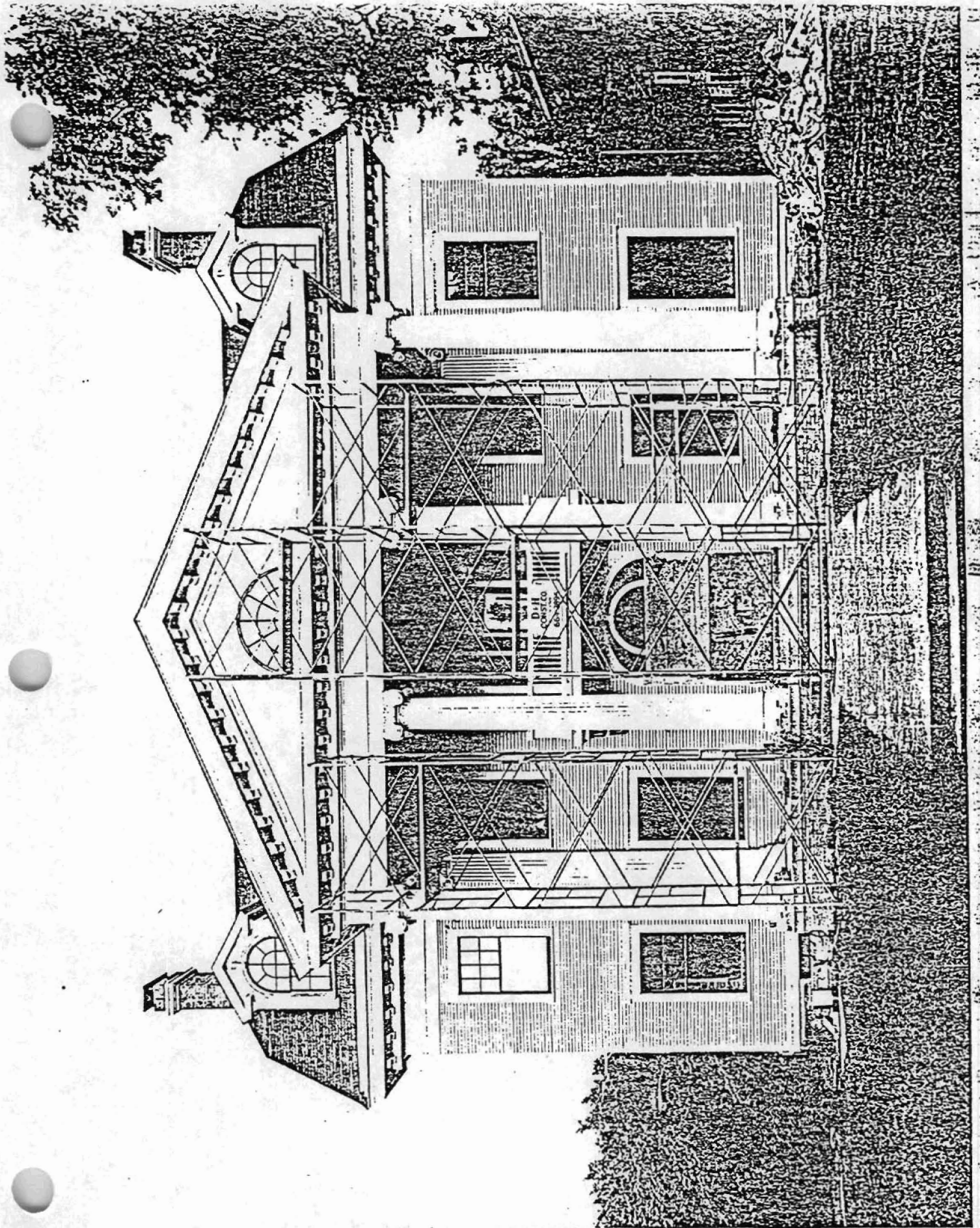
Code: PU-127 (1701 Center, Little Rock, AR)

Physical Description

This impressive two-story Colonial Revival house, faced with narrow weatherboards, on a brick foundation, is located on a corner lot in one of Little Rock's older residential neighborhoods. The Colonial Revival house with large formal portico became a staple design for expensive residences in the firm's practice. The Turner House however, incorporates several unusual features within this design framework: a gable end gambrel roof, a five bay facade, and two gable roof dormers containing round arched windows. Four monumental Ionic columns support the portico with full entablature crowned by triangular pediment. The transition from architrave to the unembellished frieze is effected by a simple molding; plain curved modillions enrich the cornice, the gable ends and the pediment. A lunette appears in the pediment as well. At the entrance, unusually fine detail is apparent in the elliptical fanlight and sidelights enriched with tracery. Above, French doors with multi-pane sidelights appear with a small balustrade of spindle balusters. The sash windows feature cornice window heads.

Statement of Significance

The Turner House at 1701 Center in Little Rock was built 1904-05. This impressively large Colonial Revival house rests in one of Little Rock's most historic residential neighborhoods. Unusual architectural features of the Turner House include a large gambrel roof, round arched dormer windows and elaborate entry marked by a fanlight and sidelights with unusual tracery. The five bay facade of the house is particularly unique to Thompson's designs. This especially large facade lends more "fineness" and authenticity to the Colonial Revival design than do the later houses designed by Thompson and his associates which combine Colonial Revival porticoes with the informality of Craftsman elements. The Turner House was severely damaged by a fire in 1981. Through the use of the original plans for this house it is being carefully restored to near original condition.



Rock, Pulaski Co., Arkansas

Triangle Name: Little Rock, Ark.

Scale: 1:24,000

Reference:	PU-090	15	566020/3844140
	PU-102	15	567080/3844520
	PU-106	15	566960/3844810
	PU-108	15	566890/3844870
	PU-109	15	566710/3844330
	PU-110	15	566830/3844330
	PU-115	15	567280/3844220
	PU-117	15	565730/3844950
	PU-122	15	563060/3844220
	PU-126	15	563670/3843210
	PU-127	15	566340/3843400
	PU-128	15	566470/3843490
	PU-134	15	566280/3843710
	PU-135	15	566220/3843810
	PU-141	15	565880/3843170
	PU-142	15	565820/3842960
	PU-143	15	565970/3843430
	PU-144	15	565950/3843270
	PU-145	15	565940/3843220
	PU-148	15	565930/3843040
	PU-149	15	565980/3843040
	PU-150	15	565980/3842920
	PU-151	15	565980/3842820
	PU-152	15	565920/3842430
	PU-159	15	562730/3844410
	PU-163	15	565680/3844930
	PU-165	15	565700/3844960

