

United States Department of the Interior
National Park Service

National Register of Historic Places
Inventory—Nomination Form



Continuation sheet 83 Item number 1,2,4,6, & 10 Page 1

INDIVIDUAL DATA SHEET

General Description

Code: PU-128	Congressional District: Second
Name: Winfield Methodist Church	Current Owner: Winfield Methodist Church
Address: 1601 Louisiana Little Rock, Arkansas	Address: 1601 Louisiana Little Rock, Arkansas . 72206
County: Pulaski	

Architectural Information

Architectural Firm: Thompson and Harding	
Date of Construction: 1921	Stylistic Influence: Gothic Revival
Original Use: Church	Present Use: Church

Geographical Information

UTM Reference: 15 566470/3843490 Acreage: Less than one

Verbal Boundary Description: Original City of Little Rock
Block 166, Lot 1, 2, North 1/2 of
Lot 3.

Condition

<input checked="" type="checkbox"/> Excellent	<input type="checkbox"/> Deteriorated	<input type="checkbox"/> Unaltered
<input type="checkbox"/> Good	<input type="checkbox"/> Ruins	<input checked="" type="checkbox"/> Altered
<input type="checkbox"/> Fair	<input type="checkbox"/> Unexposed	

National Register of Historic Places Inventory—Nomination Form

For NPS use only
received
date entered

Continuation sheet 84

Item number 7 & 8

Page 2

Code: PU-128

(1601 Louisiana, Little Rock, AR)

Physical Description

This large Gothic Revival church, designed around 1921, is located on a corner lot in one of Little Rock's older residential areas. The structure's components consist of: a four bay nave or auditorium block, articulated by brick buttresses, with a gable end entrance on Louisiana Street, a blocky square tower rising at the northeast end of the auditorium at its juncture with the "transept" which is here a two-story educational wing featuring banks of casement windows. Appropriate to its function as a neighborhood church, the varied colors, textures and materials lend a somewhat informal quality to the whole, despite its large size and relatively elaborate ornamentation. The building is faced with tapestry brick in variegated shades of reddish brown; the mortar blends with the cream colored terra-cotta ornamentation. The roofing tiles are in variegated shades of terra-cotta.

A range of concrete stairs rises from the sidewalk to the principal entrance on Louisiana Street. The traditional tri-partite entrance features solid paneled doors, double leaf doors in the center flanked by two single ones. The entire entrance group is framed by two wide brick piers ornamented with large panels of terra-cotta blind tracery. The three portals are recessed within multiple moldings in Gothic arch shapes and feature tympani of stained glass. Panels of terra-cotta blind tracery form a transition from the entrances below to the large Gothic arch stained-glass window above. Four slender terra-cotta

(continued)

Statement of Significance

Thompson and Harding's 1921 design for Winfield Methodist Church displayed their familiarity with the importance of integrating a structure into its setting. Built in one of Little Rock's older downtown residential neighborhoods, Winfield Methodist Church was constructed twenty to thirty years after most of the structures in its neighborhood. Again the use of Gothic Revival influence was used by the firm in its design for an Arkansas church. Although Winfield Methodist Church is a large structure with rather elaborate ornamentation, it conveys a somewhat informal quality through the use of materials: reddish-brown tapestry brick with cream-colored mortar that matches the terra-cotta ornamentation. Like the firm's Craftsman houses, the varied textures and earth tones of the building lend an informal, neighborhood quality to this Gothic Revival inspired church.

United States Department of the Interior
National Park Service

National Register of Historic Places
Inventory—Nomination Form

For MPS use only
received
date entered

Continuation sheet 85

Item number 7

Page 3

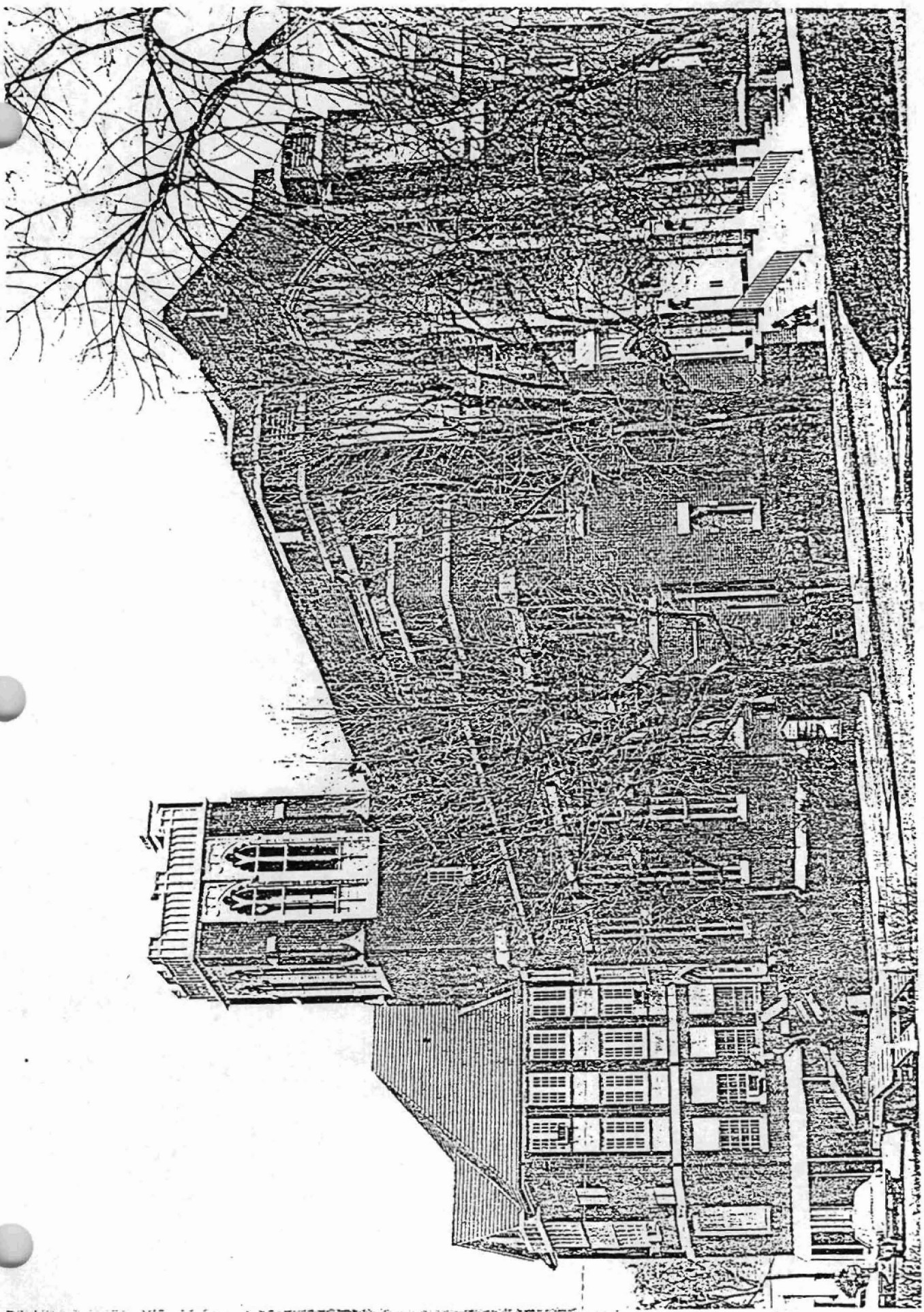
Code:

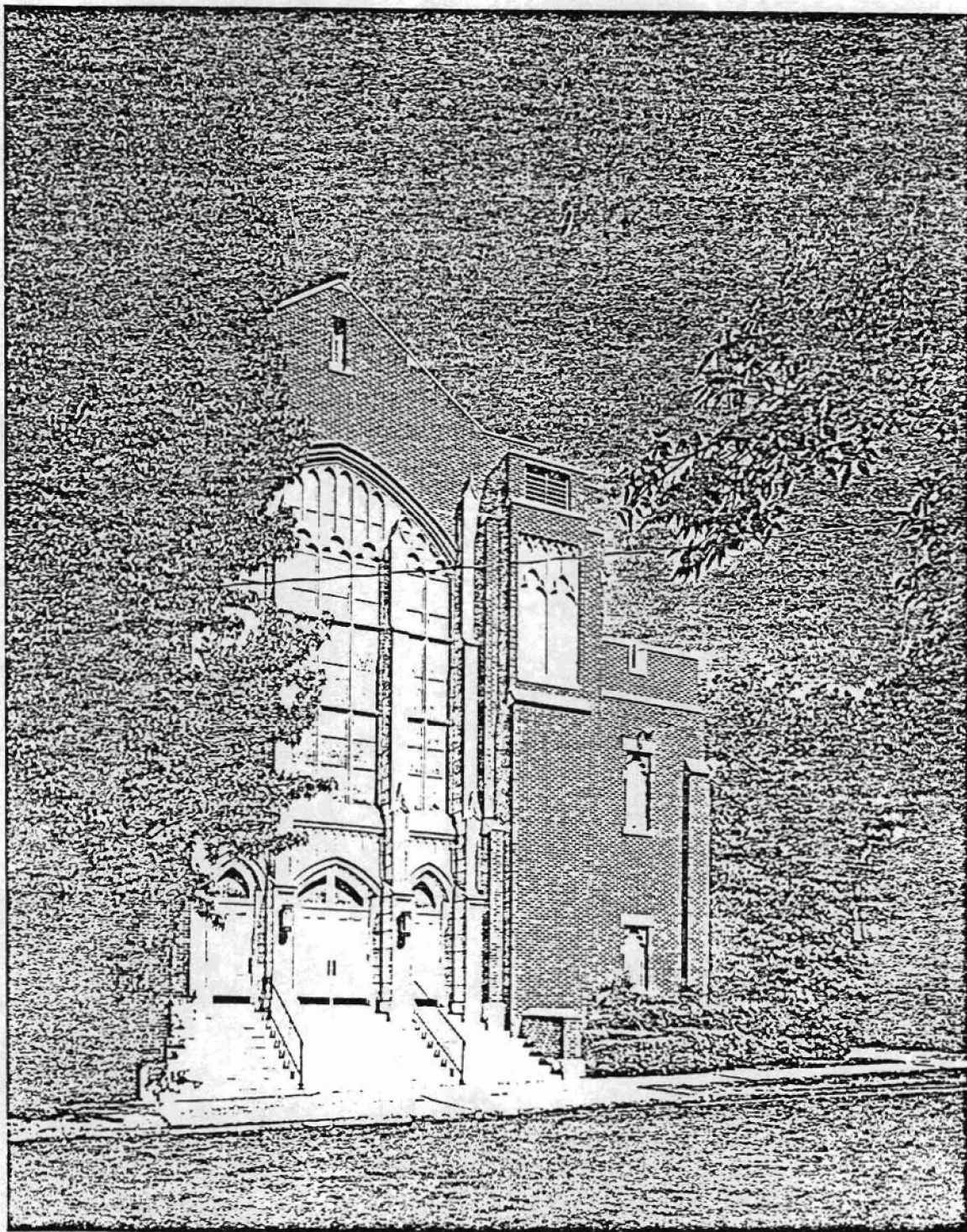
Physical Description

(continued)

piers extend upwards dividing the entrance into three bays and continuing upward to divide the stained glass window as well. The stained glass panels of this window terminate in terra-cotta trefoil cusps. The sides of the auditorium are articulated by triple lancet windows of stained glass with trefoil cusps. The large, square bell tower is capped by a wide terra-cotta band featuring crosses in relief, its openings formed by twin lancet window shapes crowned with cinquefoil tracery and ornamental bosses.

Statement of Significance





Rock, Pulaski Co., Arkansas
 Triangle Name: Little Rock, Ark.
 Scale: 1:24,000

Reference: PU-090 15 566020/3844140
 PU-102 15 567080/3844520
 PU-106 15 566960/3844810
 PU-108 15 566890/3844870
 PU-109 15 566710/3844330

PU-110 15 566830/3844330
 PU-115 15 567280/3844220
 PU-117 15 565730/3844950
 PU-122 15 563060/3844220
 PU-126 15 563670/3843210
 PU-127 15 566340/3843400
 PU-128 15 566470/3843490
 PU-134 15 566280/3843710
 PU-135 15 566220/3843810
 PU-141 15 565880/3843170
 PU-142 15 565820/3842960

PU-143 15 565970/3843430
 PU-144 15 565950/3843270
 PU-145 15 565940/3843220
 PU-148 15 565930/3843040
 PU-149 15 565980/3843040
 PU-150 15 565980/3842920
 PU-151 15 565980/3842820
 PU-152 15 565920/3842430
 PU-159 15 562730/3844410
 PU-163 15 565680/3844930
 PU-165 15 565700/3844960

