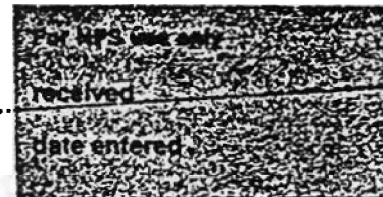


United States Department of the Interior
National Park Service

EXP. 12/31/84

National Register of Historic Places
Inventory—Nomination Form



Continuation sheet 62

Item number 1, 2, 4, 6, & 10 Page 1

INDIVIDUAL DATA SHEET

General Description

Code: PU- 109

Congressional District: Second

Name: Healey and Roth Mortuary Building Current Owner: Kumpuris Trust & Stephen J. Pappa
Address: 815 Main s/o Bensky Furs
Little Rock, Arkansas Address: 811 Main
County: Pulaski Little Rock, Arkansas 72201

Architectural Information

Architectural Firm: Sanders and Ginocchio

Date of Construction: 1925

Stylistic Influence: Second Renaissance Revival

Original Use: Commercial

Present Use: Commercial

Geographical Information

UTM Reference: 15 566710/3844330

Acreage: less than one acre

Verbal Boundary Description: Original City of Little Rock
Block 9, Lot 4

Condition

Excellent
 Good
 Fair

Deteriorated
 Ruins
 Unexposed

Unaltered
 Altered

United States Department of the Interior
National Park Service

National Register of Historic Places
Inventory—Nomination Form

For Mr. []
Received
Date entered

Continuation sheet 63

Item number 7 & 8

Page 2

Code: PU-109

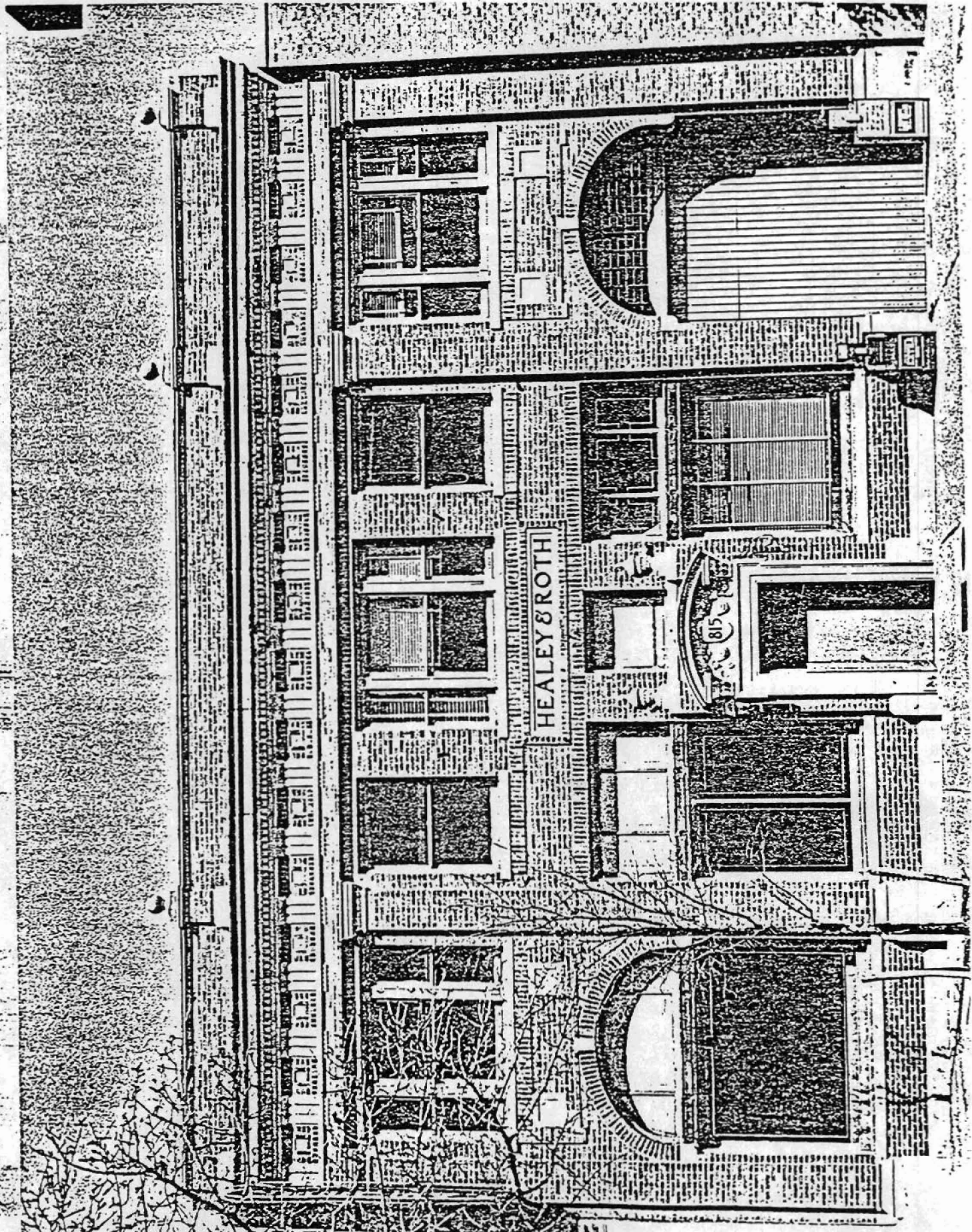
(Healey and Roth, 815 Main Street, Little Rock, AR)

Physical Description

Classical details and vague allusions to the Second Renaissance Revival create a rather urbane facade on this two-story commercial building on Little Rock's Main Street. Sanders and Ginocchio designed the building around 1925 for a mortuary firm, Healey & Roth. Faced with smooth gray-brown brick, the three-bay facade is vertically articulated by four monumental brick piers with cast stone stylized capitals and bases. These piers visually support a full entablature with a modern version of a Doric frieze consisting of cast stone triglyph motifs alternating with square brick panels. Crowning the projecting cornice are four cast stone finials which extend above the parapet, and are aligned with the piers below. Two large arched openings balance either side of the facade at ground level. An arched plate glass window appears on the north end and what was originally an arched passageway with iron gate (now boarded over) occupies the south end of the main elevation. The formal entry features a door surrounded by cast stone shouldered architrave surmounted by a segmental arch pediment with dentil molding and cast stone carving of garlands framing an oval carving with street address "815." Accenting the segmental arch doorway are two attached cast stone urns. The name of the mortuary firm is inscribed on a cast stone panel centered above the entrance between first and second stories. All windows are of plate glass. The upper windows are sash type.

Statement of Significance

The Healey & Roth Building at 815 Main Street in Little Rock was designed by Theo Sanders and Frank Ginocchio in 1925. The two-story, flat-roofed building presents an unusually formal facade. Influenced by Second Renaissance Revival styling, the Healey & Roth Building features an elaborately articulated three-bay facade with a variety of eclectic motifs. Two large arched openings lend gravity to either side of the first story facade. The entry door is surrounded by a cast stone architrave topped by a segmental arch pediment. The Healey & Roth Building was constructed for a mortuary and its richly formal composition lends an appropriate dignity to the commercial structure. The building is a picturesque and important part of the streetscape of downtown Little Rock. Designed by the partnership of Sanders and Ginocchio two years before they joined Thompson's firm, the Healey & Roth Building is one of the finer commercial designs represented in the drawing collection.



Little Rock, Pulaski Co., Arkansas
Drangle Name: Little Rock, Ark.
Scale: 1:24,000

Reference:	PU-090	15	566020/3844140
	PU-102	15	567080/3844520
	PU-106	15	566960/3844810
	PU-108	15	566890/3844870
	PU-109	15	566710/3844330
	PU-110	15	566830/3844330
	PU-115	15	567280/3844220
	PU-117	15	565730/3844950
	PU-122	15	563060/3844220
	PU-126	15	563670/3843210
	PU-127	15	566340/3843400
	PU-128	15	566470/3843490
	PU-134	15	566280/3843710
	PU-135	15	566220/3843810
	PU-141	15	565880/3843170
	PU-142	15	565820/3842960

	PU-143	15	565970/3843430
	PU-144	15	565950/3843270
	PU-145	15	565940/3843220
	PU-148	15	565930/3843040
	PU-149	15	565980/3843040
	PU-150	15	565980/3842920
	PU-151	15	565980/3842820
	PU-152	15	565920/3842430
	PU-159	15	562730/3844410
	PU-163	15	565680/3844930
	PU-165	15	565700/3844960

