

United States Department of the Interior  
National Park Service

NATIONAL REGISTER OF HISTORIC PLACES  
REGISTRATION FORM

1. Name of Property

historic name: Mountain View School

other name/site number: PP0055

2. Location

street & number: State Highway 326

not for publication: N/A

city/town: Russellville

vicinity: X

state: AR county: Pope code: AR 115 zip code: 72801

3. Classification

Ownership of Property: Public-local

Category of Property: Building

Number of Resources within Property:

| Contributing | Noncontributing |            |
|--------------|-----------------|------------|
| <u>1</u>     | _____           | buildings  |
| _____        | _____           | sites      |
| _____        | _____           | structures |
| _____        | _____           | objects    |
| <u>1</u>     | <u>0</u>        | Total      |

Number of contributing resources previously listed in the National Register: N/A

Name of related multiple property listing: Public Schools in the Arkansas Ozarks, 1920-1940

=====  
**4. State/Federal Agency Certification**  
=====

As the designated authority under the National Historic Preservation Act of 1986, as amended, I hereby certify that this X nomination \_\_\_\_\_ request for determination of eligibility meets the documentation standards for registering properties in the National Register of Historic Places and meets the procedural and professional requirements set forth in 36 CFR Part 60. In my opinion, the property X meets \_\_\_\_\_ does not meet the National Register Criteria. \_\_\_\_\_ See continuation sheet.

Cathryn J. Byrd \_\_\_\_\_ 8-2-92  
Signature of certifying official Date

Arkansas Historic Preservation Program  
State or Federal agency and bureau

In my opinion, the property \_\_\_\_\_ meets \_\_\_\_\_ does not meet the National Register criteria. \_\_\_\_\_ See continuation sheet.

\_\_\_\_\_  
Signature of commenting or other official Date

\_\_\_\_\_  
State or Federal agency and bureau

=====  
**5. National Park Service Certification**  
=====

I, hereby certify that this property is:

\_\_\_\_ entered in the National Register \_\_\_\_\_  
\_\_\_\_ See continuation sheet.  
\_\_\_\_ determined eligible for the \_\_\_\_\_  
National Register \_\_\_\_\_  
\_\_\_\_ See continuation sheet.  
\_\_\_\_ determined not eligible for the \_\_\_\_\_  
National Register \_\_\_\_\_  
\_\_\_\_ removed from the National Register \_\_\_\_\_  
\_\_\_\_ other (explain): \_\_\_\_\_

\_\_\_\_\_  
Signature of Keeper Date  
of Action

=====  
**6. Function or Use**  
=====

Historic: EDUCATION Sub: Education-related

Current: GOVERNMENT Sub: Fire station

=====

**7. Description**

=====

Architectural Classification:

Craftsman

\_\_\_\_\_

\_\_\_\_\_

Other Description: N/A

Materials: foundation Stone roof Asphalt  
walls Stone other \_\_\_\_\_

Describe present and historic physical appearance. X See continuation sheet.

=====

**8. Statement of Significance**

=====

Certifying official has considered the significance of this property in relation to other properties: Locally.

Applicable National Register Criteria: A

Criteria Considerations (Exceptions): N/A

Areas of Significance: EDUCATION

\_\_\_\_\_

\_\_\_\_\_

\_\_\_\_\_

\_\_\_\_\_

Period(s) of Significance: 1926-1940

Significant Dates: N/A

Significant Person(s): N/A

\_\_\_\_\_

Cultural Affiliation: N/A

Architect/Builder: Unknown

\_\_\_\_\_

\_\_\_\_\_

State significance of property, and justify criteria, criteria considerations, and areas and periods of significance noted above. X See continuation sheet.

=====

**9. Major Bibliographical References**

=====

See "Public Schools in the Arkansas Ozarks, 1920-1940" Multiple Property Form, Section H.

\_\_\_ See continuation sheet.

Previous documentation on file (NPS):

- preliminary determination of individual listing (36 CFR 67) has been requested.
- previously listed in the National Register
- previously determined eligible by the National Register
- designated a National Historic Landmark
- recorded by Historic American Buildings Survey # \_\_\_\_\_
- recorded by Historic American Engineering Record # \_\_\_\_\_

Primary Location of Additional Data:

- State historic preservation office
- Other state agency
- Federal agency
- Local government
- University
- Other -- Specify Repository: \_\_\_\_\_

=====

**10. Geographical Data**

=====

Acreage of Property: Less than one

UTM References: Zone Easting Northing      Zone Easting Northing

|   |           |               |                |   |     |       |       |
|---|-----------|---------------|----------------|---|-----|-------|-------|
| A | <u>15</u> | <u>484510</u> | <u>3903410</u> | B | ___ | _____ | _____ |
| C | ___       | _____         | _____          | D | ___ | _____ | _____ |

\_\_\_ See continuation sheet.

Verbal Boundary Description: \_\_\_ See continuation sheet.

Beginning at a point formed by the intersection of a line running along the southern edge of State Highway 326 with a perpendicular line running parallel with the building's eastern elevation and located approximately 50 feet to the east thereof, proceed southerly along said line for a distance of approximately 200 feet to its intersection with a perpendicular line running parallel to the building's southern elevation; thence proceed westerly along said line for a distance of approximately 200 feet to its intersection with a line running parallel to the building's western elevation; thence proceed northerly along said line for a distance of approximately 200 feet to its intersection with a perpendicular line running along the southern edge of State Highway 326; thence proceed easterly along said line for a distance of approximately 200 feet to the point of beginning.

Boundary Justification: \_\_\_ See continuation sheet.

This boundary includes both the historic resource and all the surrounding property known to have been historically associated therewith that retains its integrity.

=====

**11. Form Prepared By**

=====

Name/Title: Kenneth Story, National Register Coordinator

Organization: Arkansas Historic Preservation Program Date: July 16, 1992

Street & Number: 225 E. Markham, Suite 300 Telephone: (501) 324-9346

City or Town: Little Rock State: AR ZIP: 72201

United States Department of the Interior  
National Park Service

## National Register of Historic Places Continuation Sheet

Section number 7 Page 1

---

### Summary

The Mountain View School is a single story, stone masonry classroom building designed in a restrained version of the Craftsman style. Its rectangular plan is highlighted only by the central front porch on the main or northern elevation, which itself features a gable roof supported upon two Craftsman wood columns supported by stone piers. The entrances behind are set into a recessed porch wall. The hipped roof is covered with asphalt shingles, the walls faced with stone, and the structure rests upon a continuous stone foundation.

### Elaboration

The Mountain View School is a single story, stone masonry classroom building designed in a restrained version of the Craftsman style. Its rectangular plan is highlighted only by the central front porch on the main or northern elevation, which itself features a gable roof supported upon two Craftsman wood columns supported by stone piers. The entrances behind are set into a recessed porch wall. The hipped roof is covered with asphalt shingles, the walls faced with stone, and the structure rests upon a continuous stone foundation.

The northern or front elevation is symmetrically-organized around the projecting, pedimented entrance porch. The porch roof is supported upon two wooden, box columns that rest upon stone piers and a concrete deck. The recessed entrance bay behind is accessed via two single-leaf entrances with transoms. The walls to either side of the entrance porch are lighted with a small, six-pane rectangular window next to the porch and two taller, nine-over-nine wood sash windows toward the ends of the elevation. The southern elevation opposite features two original entrances -- the single-leaf entrance toward the western elevation and the central, single-leaf entrance -- though the original window bay toward the western end has been filled and cut down, and a new overhead rolling door opening has been cut into the wall near the eastern elevation to accommodate the fire engine housed within.

The eastern and western elevations are blank.

The Mountain View School has been substantially altered only on its southern or rear elevation, largely due to its adaptation as a fire station. Otherwise the building is largely original and unaltered.

United States Department of the Interior  
National Park Service

## National Register of Historic Places Continuation Sheet

Section number 8 Page 1

---

### Mountain View School

Russellville, at the time the largest city between Little Rock and Fort Smith and a major depot point on the Missouri Pacific line, has long been an important economic and commercial center in western Arkansas. During the 1920's, the largest industries included a lumber mill, a woodworking plant, gins, coal mining, and a cotton compresses.<sup>1</sup> The construction of the Mountain View School in 1926 illustrated not only the growth of the Russellville community and the concomitant need for expanded educational facilities, but also the effectiveness of Governor Thomas C. McRae's educational reforms passed during the General Assembly special session of March, 1924.<sup>2</sup>

The Mountain View School, constructed during the period covered by the historic context *The Evolution of the Public School System in the Arkansas Ozarks, 1920-1940*, is a representative example of a small stone school building constructed for a rural school district. Its use during this period as a local school building clearly identifies it with this historic context and with this property type. It is significant locally under Criterion A through its direct associations with the history of the evolution of the public school system in the Ozark Mountain region of the state during this period.

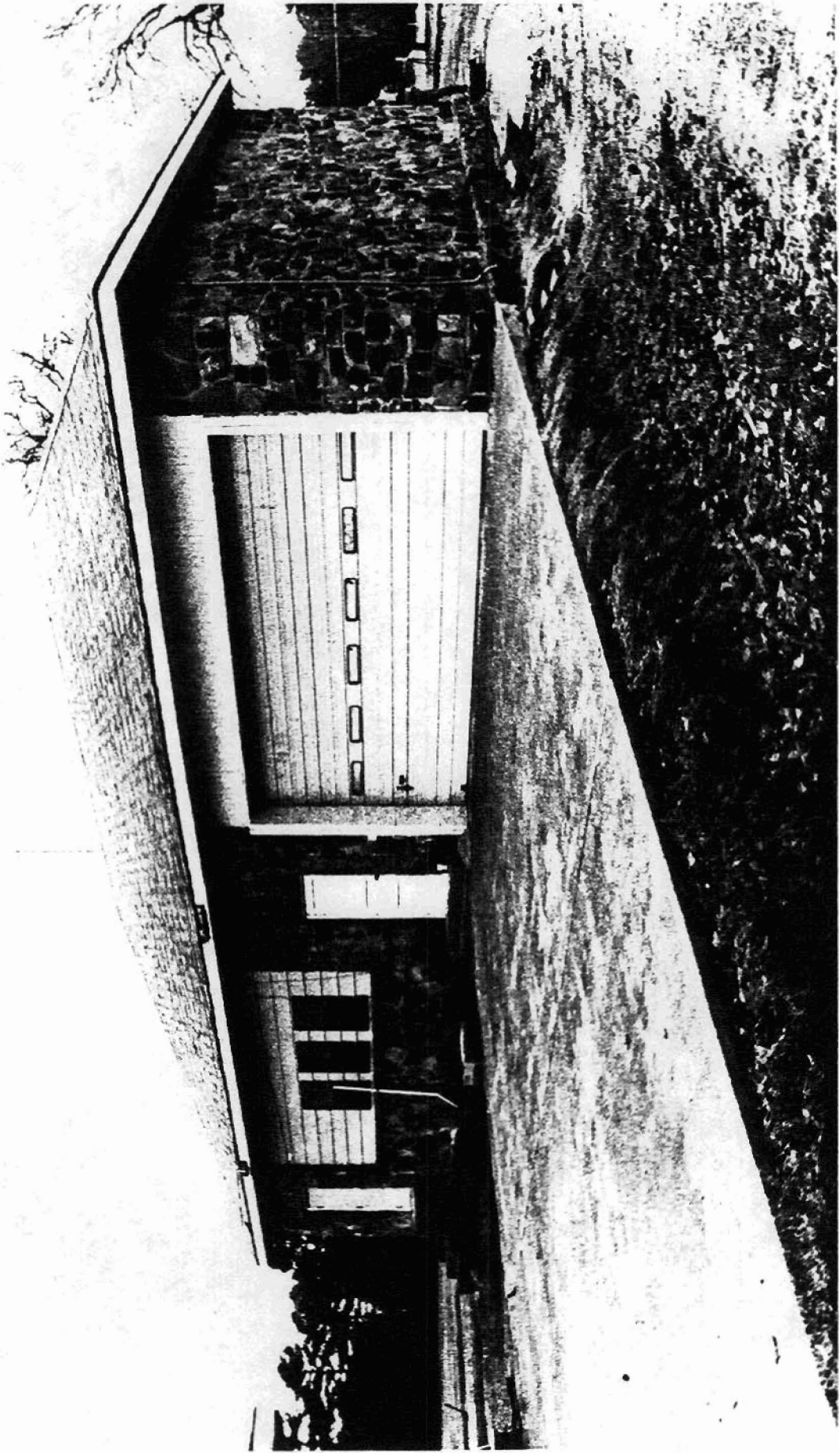
---

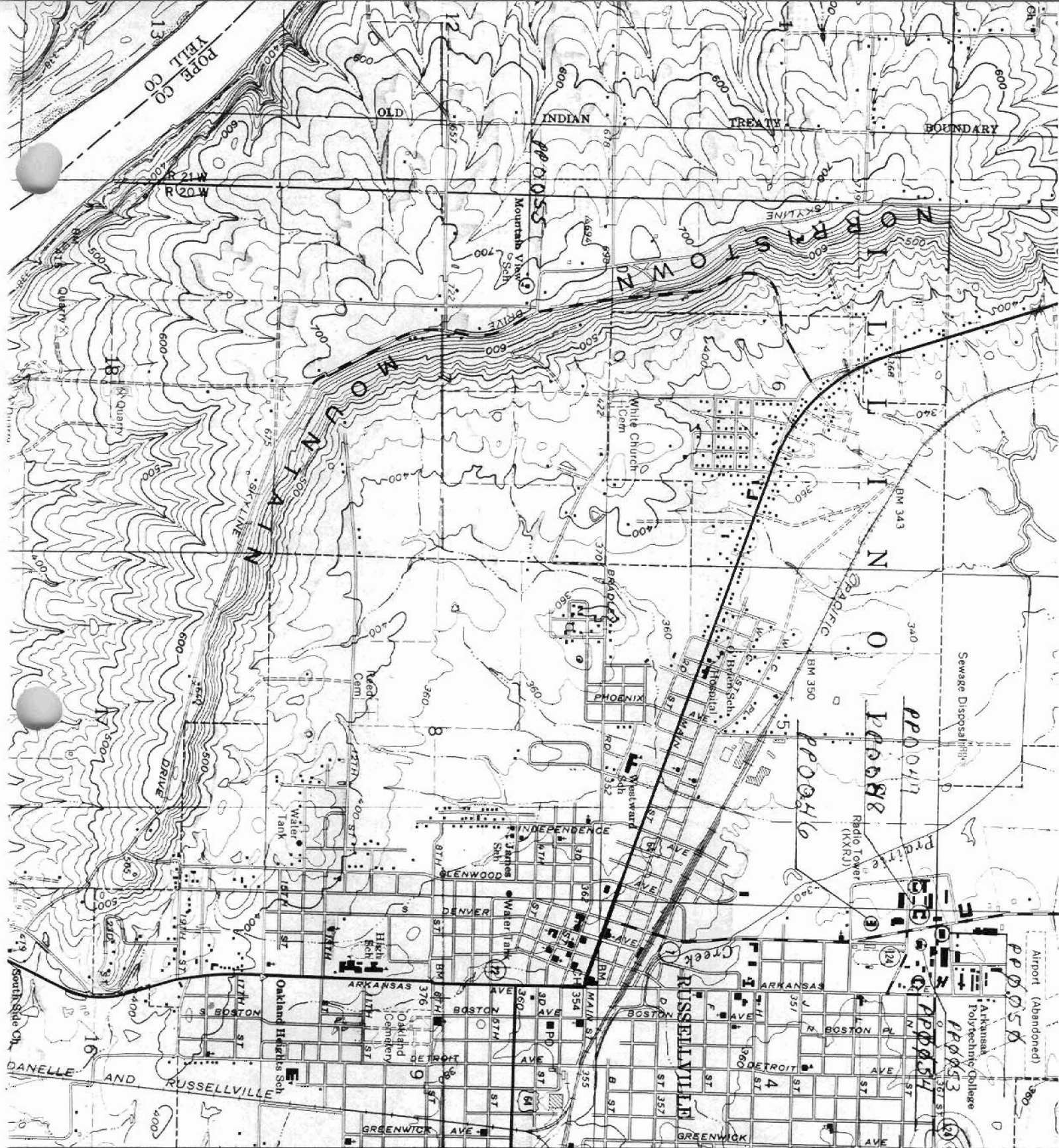
<sup>1</sup>The WPA Guide to 1930's Arkansas, 248-249.

<sup>2</sup>William D. Baker, Public Schools in the Ozarks, 1920-1940, (Little Rock, Arkansas: Arkansas Historic Preservation Program, 1990), 7-9.









3902 [PP0054] CARROLL HALL  
 15/487835/3905280  
 RUSSELLVILLE, ARKANSAS  
 3903 [PP0050] GIRLS DOMESTIC SCIENCE AND ART BUILDING  
 15/487610/3905390  
 POTTSVILLE 5 MI. ATKINS 12 MI.  
 3904 [PP0049] HUGHES HALL  
 15/487380/3905260  
 PHYSICAL EDUCATION BUILDING  
 17300' 15/487510/3903410  
 3905 [PP0046] WILLIAMSON HALL  
 15/487560/3905050  
 17000' 15/487510/3905280  
 TOWN CLERK HALL  
 [PP0047]  
 RUSSELLVILLE, ARKANSAS  
 17300' 15/487510/3903410  
 AIR CANTINAS  
 RUSSELLVILLE, ARKANSAS  
 17300' 15/487510/3903410  
 CENTER VALLEY APPLETON 20 M  
 [PP0057]