

United States Department of the Interior  
National Park Service

NATIONAL REGISTER OF HISTORIC PLACES  
REGISTRATION FORM

1. Name of Property

historic name: Wilson Hall - Arkansas Tech University

other name/site number: PP0048

2. Location

street & number: North El Paso Street

not for publication: N/A

city/town: Russellville

vicinity: N/A

state: AR

county: Pope

code: AR 115

zip code: 72801

3. Classification

Ownership of Property: Public-state

Category of Property: Building

Number of Resources within Property:

Contributing

Noncontributing

1  
\_\_\_\_\_  
\_\_\_\_\_  
\_\_\_\_\_  
1

\_\_\_\_\_  
\_\_\_\_\_  
\_\_\_\_\_  
\_\_\_\_\_  
0 Total

Number of contributing resources previously listed in the National Register: N/A

Name of related multiple property listing: Public Schools in the Arkansas Ozarks, 1920-1940

=====

**4. State/Federal Agency Certification**

=====

As the designated authority under the National Historic Preservation Act of 1986, as amended, I hereby certify that this X nomination \_\_\_\_\_ request for determination of eligibility meets the documentation standards for registering properties in the National Register of Historic Places and meets the procedural and professional requirements set forth in 36 CFR Part 60. In my opinion, the property X meets \_\_\_\_\_ does not meet the National Register Criteria. \_\_\_\_\_ See continuation sheet

Cathryn A. Byrd \_\_\_\_\_ 8-2-92  
Signature of certifying official Date

\_\_\_\_\_  
State or Federal agency and bureau

In my opinion, the property \_\_\_\_\_ meets \_\_\_\_\_ does not meet the National Register criteria. \_\_\_\_\_ See continuation sheet.

\_\_\_\_\_  
Signature of commenting or other official Date

\_\_\_\_\_  
State or Federal agency and bureau

=====

**5. National Park Service Certification**

=====

I, hereby certify that this property is:

- \_\_\_\_\_ entered in the National Register \_\_\_\_\_  
\_\_\_\_\_ See continuation sheet.
- \_\_\_\_\_ determined eligible for the \_\_\_\_\_  
National Register \_\_\_\_\_  
\_\_\_\_\_ See continuation sheet.
- \_\_\_\_\_ determined not eligible for the \_\_\_\_\_  
National Register \_\_\_\_\_
- \_\_\_\_\_ removed from the National Register \_\_\_\_\_
- \_\_\_\_\_ other (explain): \_\_\_\_\_

\_\_\_\_\_  
Signature of Keeper Date of Action

=====

**6. Function or Use**

=====

Historic: EDUCATION \_\_\_\_\_ Sub: School \_\_\_\_\_

Current: EDUCATION \_\_\_\_\_ Sub: School \_\_\_\_\_

\_\_\_\_\_  
\_\_\_\_\_

=====

**7. Description**

=====

Architectural Classification:

Colonial Revival

\_\_\_\_\_

\_\_\_\_\_

Other Description: N/A

Materials: foundation Concrete roof Ceramic tile  
walls Brick other \_\_\_\_\_

Describe present and historic physical appearance. X See continuation sheet.

=====

**8. Statement of Significance**

=====

Certifying official has considered the significance of this property in relation to other properties: Locally.

Applicable National Register Criteria: A, C

Criteria Considerations (Exceptions): N/A

Areas of Significance: EDUCATION  
ARCHITECTURE  
\_\_\_\_\_  
\_\_\_\_\_  
\_\_\_\_\_

Period(s) of Significance: 1925-1940

Significant Dates: 1925

Significant Person(s): N/A

Cultural Affiliation: N/A

Architect/Builder: Unknown  
\_\_\_\_\_  
\_\_\_\_\_

State significance of property, and justify criteria, criteria considerations, and areas and periods of significance noted above. X See continuation sheet.

=====

**9. Major Bibliographical References**

=====

See "Public Schools in the Arkansas Ozarks, 1920-1940" Multiple Property Form, Section H.

\_\_\_ See continuation sheet.

Previous documentation on file (NPS):

- \_ preliminary determination of individual listing (36 CFR 67) has been requested.
- \_ previously listed in the National Register
- \_ previously determined eligible by the National Register
- \_ designated a National Historic Landmark
- \_ recorded by Historic American Buildings Survey # \_\_\_\_\_
- \_ recorded by Historic American Engineering Record # \_\_\_\_\_

Primary Location of Additional Data:

- X State historic preservation office
- \_ Other state agency
- \_ Federal agency
- \_ Local government
- \_ University
- \_ Other -- Specify Repository: \_\_\_\_\_

=====

**10. Geographical Data**

=====

Acreage of Property: Approximately 2.25

UTM References: Zone Easting Northing      Zone Easting Northing

A	<u>15</u>	<u>487510</u>	<u>3905280</u>	B	___	_____	_____
C	___	_____	_____	D	___	_____	_____

\_\_\_ See continuation sheet.

Verbal Boundary Description: \_\_\_ See continuation sheet.

Beginning at a point formed by the intersection of a line running along the western edge of North El Paso Street with a perpendicular line running along the northern edge of West "M" Street, proceed westerly along said line for a distance of approximately 300 feet to its intersection with a perpendicular line running parallel to the building's western elevation; thence proceed northerly along said line for a distance of approximately 300 feet to its intersection with a perpendicular line running parallel to the building's northern elevation; thence proceed easterly along said line for a distance of approximately 250 feet to its intersection with the western edge of North El Paso Street; thence proceed southeasterly along said line for a distance of approximately 325 feet to the point of beginning.

Boundary Justification: \_\_\_ See continuation sheet.

This boundary includes both the historic resource and all the surrounding property known to have been historically associated therewith that retains its integrity.

=====

**11. Form Prepared By**

=====

Name/Title: Kenneth Story, National Register Coordinator

Organization: Arkansas Historic Preservation Program Date: July 16, 1992

Street & Number: 225 E. Markham, Suite 300 Telephone: (501) 324-9346

City or Town: Little Rock State: AR ZIP: 72201

United States Department of the Interior  
National Park Service

## National Register of Historic Places Continuation Sheet

Section number 7 Page 1

---

### Summary

Wilson Hall at Arkansas Tech University is a large, two story, brick masonry classroom building designed in the Colonial Revival style. It features an elaborate though symmetrical "E"-shaped plan, consisting of a central hipped roof section connecting two perpendicular hipped roof sections, each of which projects forward from the front of the building and terminates in a smaller hipped roof "house" that completes the composition. The central entrance to the main hipped roof section is itself a two story portico supported by four classical columns, paired and placed to either side of the entrance. A ceramic tile roof shelters the brick walls and the continuous cast concrete foundation.

### Elaboration

Wilson Hall at Arkansas Tech University is a large, two story, brick masonry classroom building designed in the Colonial Revival style. It features an elaborate though symmetrical "E"-shaped plan, consisting of a central hipped roof section connecting two perpendicular hipped roof sections, each of which projects forward from the front of the building and terminates in a smaller hipped roof "house" that completes the composition. The central entrance to the main hipped roof section is itself a two story portico supported by four classical columns, paired and placed to either side of the entrance. A single brick chimney projects from the northern flank of the hipped roof of the central section, adjacent to this section's intersection with the perpendicular northern hipped roof section. A ceramic tile roof shelters the brick walls and the continuous cast concrete foundation.

The eastern or front elevation is composed of the central, two-story, hipped roof section with its Colonial Revival cupola and the two, perpendicular hipped roof sections at either end that project to the east and terminate in rectangular, hipped roof "houses" or pavilions. The central section is dominated by the vented cupola in the center of the roof and the flat roof, two-story columned portico that frames the entrance. The portico is supported on six simplified Classical columns. The double-leaf entrance is set into a rectangular opening that is filled with an arched, Florentine transom and sidelights. A single window is placed directly above the entrance, but beneath the portico ceiling. Four window bays flank the portico to either side, the closest of which contains a single window and the other three of which contain a pair of windows. The inside wall of the northern perpendicular section is lighted with six pairs of windows; the inside wall of the southern perpendicular section is also lighted with six window bays, though a single-leaf entrance bay is also placed toward the intersection with the eastern end pavilion. Four

United States Department of the Interior  
National Park Service

## National Register of Historic Places Continuation Sheet

Section number 7 Page 2

---

dormer vents are placed on the inside slope of each of the perpendicular sections, and three more are placed symmetrically on the central section, below the cupola. The fronts of both of the end pavilions are each six bays in length, with a central wall dormer containing a central vent in the gable peak and two individual window bays in the wall below. A pair of windows constitutes the next bay to either side of the wall dormer, and the ends of the elevations are finished with two more individual window bays; the first and second floors in all cases are identical. The northern and southern elevations of the end pavilions are also identical, with a central entrance being framed by a single window to either side and three windows placed symmetrically above. The inside entrances are further ornamented with a decorative Classical wood frame and pediment.

The western elevation is of the same fundamental form as the eastern elevation. Two pairs of windows are placed in the center and between both floors (to accommodate the stairwell behind) with a single leaf entrance on the basement level. Four pairs of windows are placed to either side of center on both main floors and the raised basement. Three hipped roof dormers vent the attic above. The hipped roof end bays are each lighted with three symmetrically-placed single windows on each floor. The western or rear walls of the end pavilions are each lighted with two windows on each floor.

The section of the northern elevation to the west of the projecting wall of the end pavilion is nine bays in length, including a single-leaf entrance adjacent to the wall of the end pavilion and eight window bays continuing to the western end of the elevation. The southern elevation is identical.

Wilson Hall has remained in remarkably intact condition since its construction and has suffered relatively few alterations. It is in very good condition.

United States Department of the Interior  
National Park ServiceNational Register of Historic Places  
Continuation SheetSection number   8   Page   1  **Wilson Hall; Arkansas Tech University**

Arkansas Tech University was founded in 1909 when the Arkansas General Assembly created four Agricultural School Districts, with the Second District being formed by the twenty counties of northwest Arkansas. The city of Russellville offered the governor-appointed Board of Trustees four-hundred acres adjoining the city limits and a cash bonus of several thousand dollars, and was thus selected as the site of the new school.

The Second District Agricultural School -- as it was initially known -- first matriculated students in the fall of 1910. The school was planned to function initially as an agricultural secondary school and to grow into a four-year college-level institution as soon as possible. It first offered a freshman year of college work in 1921-22, and instituted second, third and fourth years in each of the succeeding academic years, respectively, so that by 1925 both a four-year high school and a four-year college were operating on the same campus. This progress was acknowledged by the Arkansas General Assembly in 1925 when it changed the name of the school to Arkansas Polytechnic College and awarded it the power to grant degrees. However, this ambitious program proved beyond the resources of the school, and by 1927 it became a two-year junior college. It remained so until 1948, when the Board of Trustees re-instituted its degree-granting status with a plan to return to a four-year school. The General Assembly officially changed the name to Arkansas Tech University in 1976.

The 1930's heralded one of the most ambitious periods of construction on the campus. As was the case with many public sites and institutions around the state, the labor force was largely contributed by the Emergency Relief Administration (ERA), the federal agency established by President Franklin D. Roosevelt to hire the nation's unemployed for the purpose of carrying out a broad variety of projects in the public interest. The Works Progress Administration (WPA), the National Youth Administration (NYA) and the Civilian Conservation Corps (CCC) were all subsidiary organizations whose work in Arkansas was overseen by the ERA.

Wilson Hall was constructed in 1925 (architect and builder unknown) and as such was built during the period covered by the historic context *The Evolution of the Public School System in the Arkansas Ozarks, 1920-1940*. It stands as an outstanding example of a large, brick masonry classroom building with an "E"-shaped plan designed in the Colonial Revival style (e.g., the absolutely symmetrical composition of the front facade and the columned Classical central entrance portico -- including its four Doric columns -- that dominates the composition). Its use during this period as an educational classroom building for a public university clearly identifies it with this historic context and with this property type. It is significant locally under Criterion



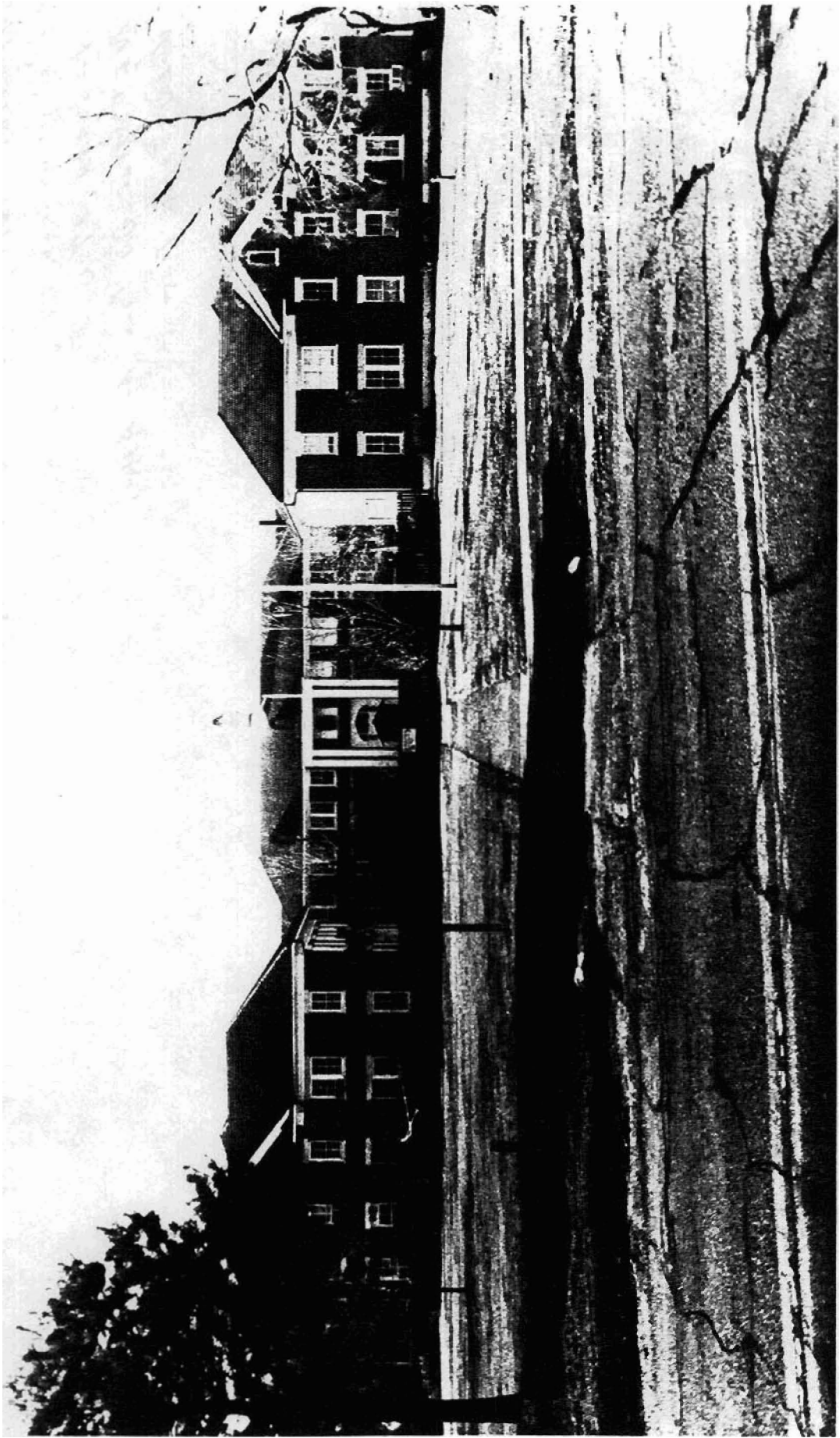
**United States Department of the Interior**  
**National Park Service**

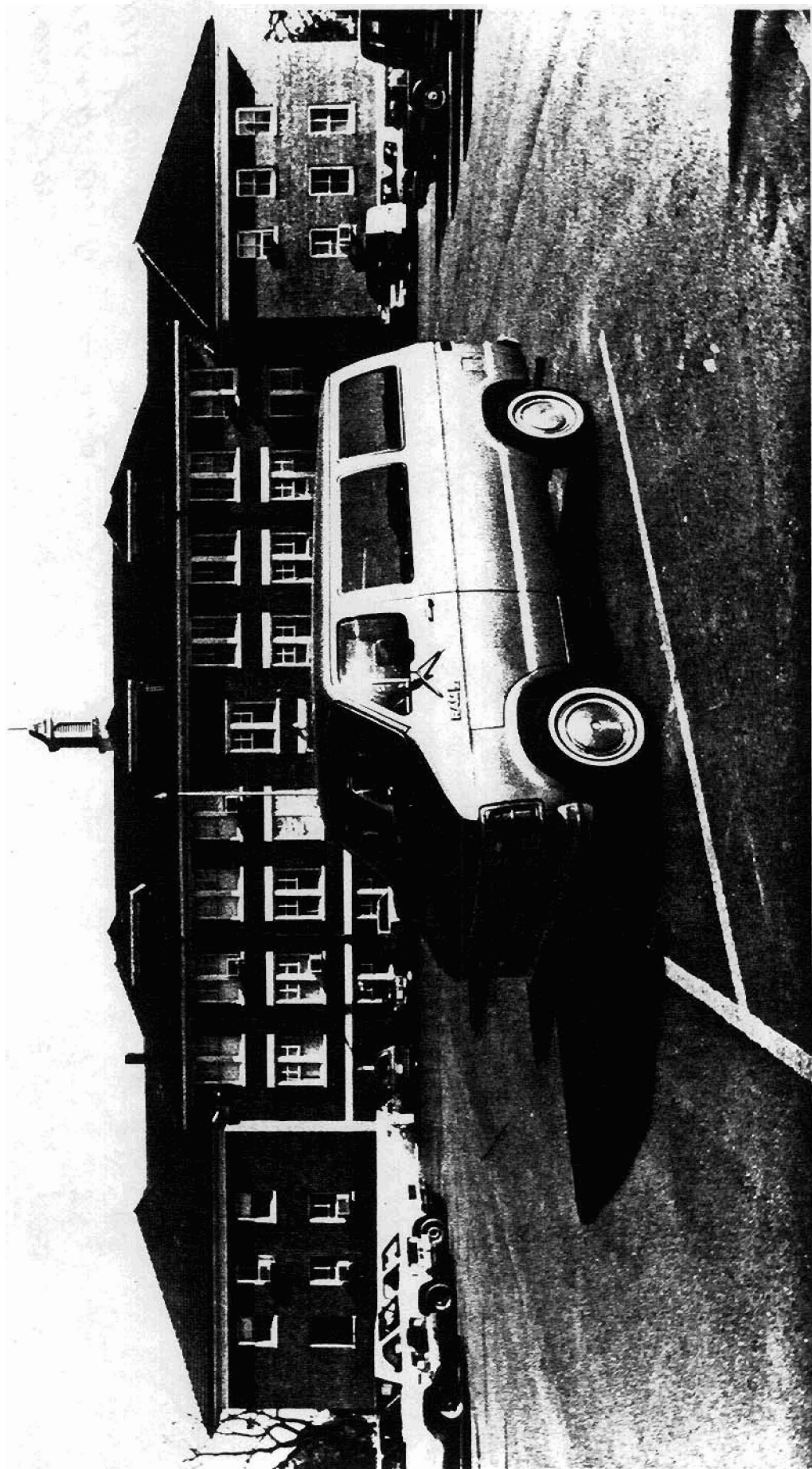
**National Register of Historic Places**  
**Continuation Sheet**

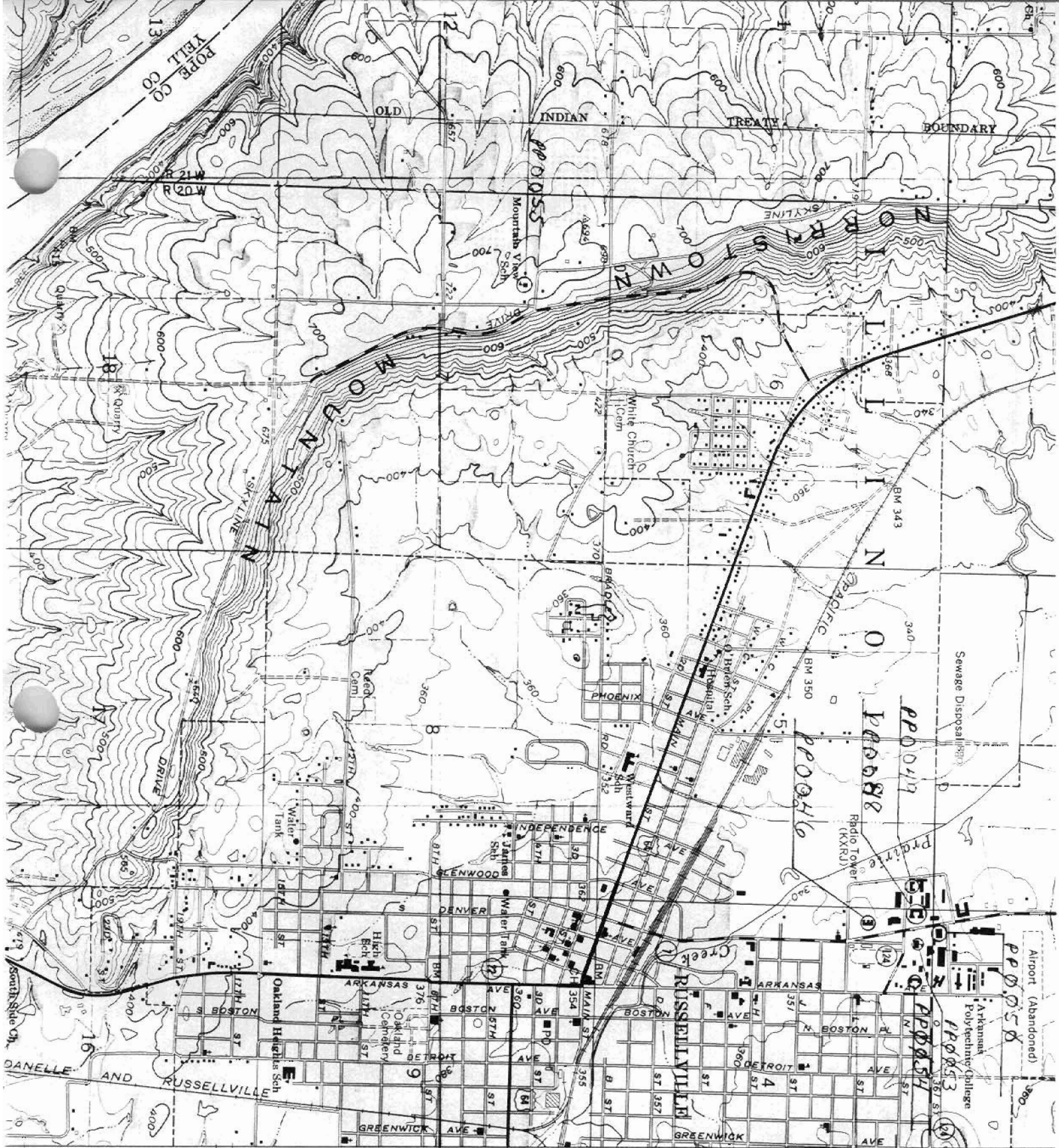
Section number   8   Page   2  

---

A through its direct associations with the history of the evolution of the public school system in the Ozark Mountain region of the state during this period, and under Criterion C as the best example locally of this application of the Colonial Revival style to this particular floor plan.







- 3901 1730' 15/481510/3903416
- 3905 15/481510/3903416
- 3902 15/481510/3903416
- 3904 15/481510/3903416
- 3903 15/481510/3903416
- 3906 15/481510/3903416
- 3907 15/481510/3903416
- 3908 15/481510/3903416
- 3909 15/481510/3903416
- 3910 15/481510/3903416
- 3911 15/481510/3903416
- 3912 15/481510/3903416
- 3913 15/481510/3903416
- 3914 15/481510/3903416
- 3915 15/481510/3903416
- 3916 15/481510/3903416
- 3917 15/481510/3903416
- 3918 15/481510/3903416
- 3919 15/481510/3903416
- 3920 15/481510/3903416
- 3921 15/481510/3903416
- 3922 15/481510/3903416
- 3923 15/481510/3903416
- 3924 15/481510/3903416
- 3925 15/481510/3903416
- 3926 15/481510/3903416
- 3927 15/481510/3903416
- 3928 15/481510/3903416
- 3929 15/481510/3903416
- 3930 15/481510/3903416
- 3931 15/481510/3903416
- 3932 15/481510/3903416
- 3933 15/481510/3903416
- 3934 15/481510/3903416
- 3935 15/481510/3903416
- 3936 15/481510/3903416
- 3937 15/481510/3903416
- 3938 15/481510/3903416
- 3939 15/481510/3903416
- 3940 15/481510/3903416
- 3941 15/481510/3903416
- 3942 15/481510/3903416
- 3943 15/481510/3903416
- 3944 15/481510/3903416
- 3945 15/481510/3903416
- 3946 15/481510/3903416
- 3947 15/481510/3903416
- 3948 15/481510/3903416
- 3949 15/481510/3903416
- 3950 15/481510/3903416
- 3951 15/481510/3903416
- 3952 15/481510/3903416
- 3953 15/481510/3903416
- 3954 15/481510/3903416
- 3955 15/481510/3903416
- 3956 15/481510/3903416
- 3957 15/481510/3903416
- 3958 15/481510/3903416
- 3959 15/481510/3903416
- 3960 15/481510/3903416
- 3961 15/481510/3903416
- 3962 15/481510/3903416
- 3963 15/481510/3903416
- 3964 15/481510/3903416
- 3965 15/481510/3903416
- 3966 15/481510/3903416
- 3967 15/481510/3903416
- 3968 15/481510/3903416
- 3969 15/481510/3903416
- 3970 15/481510/3903416
- 3971 15/481510/3903416
- 3972 15/481510/3903416
- 3973 15/481510/3903416
- 3974 15/481510/3903416
- 3975 15/481510/3903416
- 3976 15/481510/3903416
- 3977 15/481510/3903416
- 3978 15/481510/3903416
- 3979 15/481510/3903416
- 3980 15/481510/3903416
- 3981 15/481510/3903416
- 3982 15/481510/3903416
- 3983 15/481510/3903416
- 3984 15/481510/3903416
- 3985 15/481510/3903416
- 3986 15/481510/3903416
- 3987 15/481510/3903416
- 3988 15/481510/3903416
- 3989 15/481510/3903416
- 3990 15/481510/3903416
- 3991 15/481510/3903416
- 3992 15/481510/3903416
- 3993 15/481510/3903416
- 3994 15/481510/3903416
- 3995 15/481510/3903416
- 3996 15/481510/3903416
- 3997 15/481510/3903416
- 3998 15/481510/3903416
- 3999 15/481510/3903416
- 4000 15/481510/3903416