

United States Department of the Interior
National Park Service

National Register of Historic Places Registration Form

This form is for use in nominating or requesting determinations of eligibility for individual properties or districts. See instructions in *Guidelines for Completing National Register Forms* (National Register Bulletin 16). Complete each item by marking "x" in the appropriate box or by entering the requested information. If an item does not apply to the property being documented, enter "N/A" for "not applicable." For functions, styles, materials, and areas of significance, enter only the categories and subcategories listed in the instructions. For additional space use continuation sheets (Form 10-900a). Type all entries.

1. Name of Property

historic name Mountain Fork Bridge

other names/site number HAER No. AR-34

2. Location

street & number County Road #38, spanning Mountain Fork Creek

not for publication N/A

city, town Mena

vicinity

state Arkansas

code 05

county Polk

code 113

zip code 71953

3. Classification

Ownership of Property

- private
- public-local
- public-State
- public-Federal

Category of Property

- building(s)
- district
- site
- structure
- object

Number of Resources within Property

Contributing	Noncontributing
_____	_____ buildings
_____	_____ sites
<u>1</u>	_____ structures
_____	_____ objects
<u>1</u>	_____ Total

Name of related multiple property listing:

Historic Bridges of Arkansas

Number of contributing resources previously listed in the National Register N/A

4. State/Federal Agency Certification

As the designated authority under the National Historic Preservation Act of 1966, as amended, I hereby certify that this nomination request for determination of eligibility meets the documentation standards for registering properties in the National Register of Historic Places and meets the procedural and professional requirements set forth in 36 CFR Part 60. In my opinion, the property meets does not meet the National Register criteria. See continuation sheet.

Signature of certifying official

Date

Arkansas Historic Preservation Program

State or Federal agency and bureau

In my opinion, the property meets does not meet the National Register criteria. See continuation sheet.

Signature of commenting or other official

Date

State or Federal agency and bureau

5. National Park Service Certification

I, hereby, certify that this property is:

- entered in the National Register.
 See continuation sheet.
- determined eligible for the National Register. See continuation sheet.
- determined not eligible for the National Register.
- removed from the National Register.
- other, (explain): _____

Signature of the Keeper

Date of Action

6. Function or Use

Historic Functions (enter categories from instructions)

Transportation/Road-Related

Current Functions (enter categories from instructions)

Transportation/Road-Related

7. Description

Architectural Classification
(enter categories from instructions)

Pratt pony-truss

Materials (enter categories from instructions)

foundation steel/concrete
walls steel

roof _____
other _____

Describe present and historic physical appearance.

United States Department of the Interior
National Park Service

National Register of Historic Places

Continuation Sheet

Section number 7 Page 1

The Mountain Fork Bridge is a two span Pratt steel pony-truss bridge. The two main spans are each 80 feet long and the nine approach spans measure 26 feet each, bringing the total length of the bridge to 406 feet. In the steel pony-trusses, the majority of the web members making up the top and bottom chords, diagonals, and verticals, are built from channels, angles, continuous plate, or batten plates riveted together. The handrail is made from angles and the road deck is covered with timber planking. Piers consist of steel cylindrical rings riveted together and filled with concrete. The approach spans are steel stringers supported by piers constructed with built-up sections of angles and lacing bars riveted together.

The Mountain Fork Bridge is in good condition and is being maintained by the county.

8. Statement of Significance

Certifying official has considered the significance of this property in relation to other properties:

nationally statewide locally

Applicable National Register Criteria A B C D

Criteria Considerations (Exceptions) A B C D E F G

Areas of Significance (enter categories from instructions)

Transportation

Engineering

Period of Significance

Early 1900's

Cultural Affiliation

N/A

Significant Person

N/A

Architect/Builder

N/A

State significance of property, and justify criteria, criteria considerations, and areas and periods of significance noted above.

See continuation sheet

9. Major Bibliographical References

See Historic Bridges of Arkansas, Multiple Property Nomination, Section H.

Previous documentation on file (NPS):

- preliminary determination of individual listing (36 CFR 67) has been requested
- previously listed in the National Register
- previously determined eligible by the National Register
- designated a National Historic Landmark
- recorded by Historic American Buildings Survey # _____
- recorded by Historic American Engineering Record # HAER No. AR-34

See continuation sheet

Primary location of additional data:

- State historic preservation office
- Other State agency
- Federal agency
- Local government
- University
- Other

Specify repository:

U.S. Library of Congress

10. Geographical Data

Acreeage of property Less than one acre

UTM References

A

1	5
---	---

3	7	1	5	1	0
---	---	---	---	---	---

3	8	2	1	4	1	0
---	---	---	---	---	---	---

Zone Easting Northing

B

1	5
---	---

3	7	1	5	8	0
---	---	---	---	---	---

3	8	2	1	4	4	0
---	---	---	---	---	---	---

Zone Easting Northing

C

--	--

--	--	--	--	--	--

--	--	--	--	--	--	--

D

--	--

--	--	--	--	--	--

--	--	--	--	--	--	--

See continuation sheet

Verbal Boundary Description

Beginning at a point approximately 1,700 feet west of the intersection of County Road #38 and Gann Cemetery Road, the boundary of the Mountain Fork Bridge starts here at the east abutment, then continues west across the Mountain Fork Creek for approximately 406 feet, where it terminates at the west abutment.

See continuation sheet

Boundary Justification

The boundary includes the main spans, approach spans, piers and abutments that are historically associated with this property.

See continuation sheet

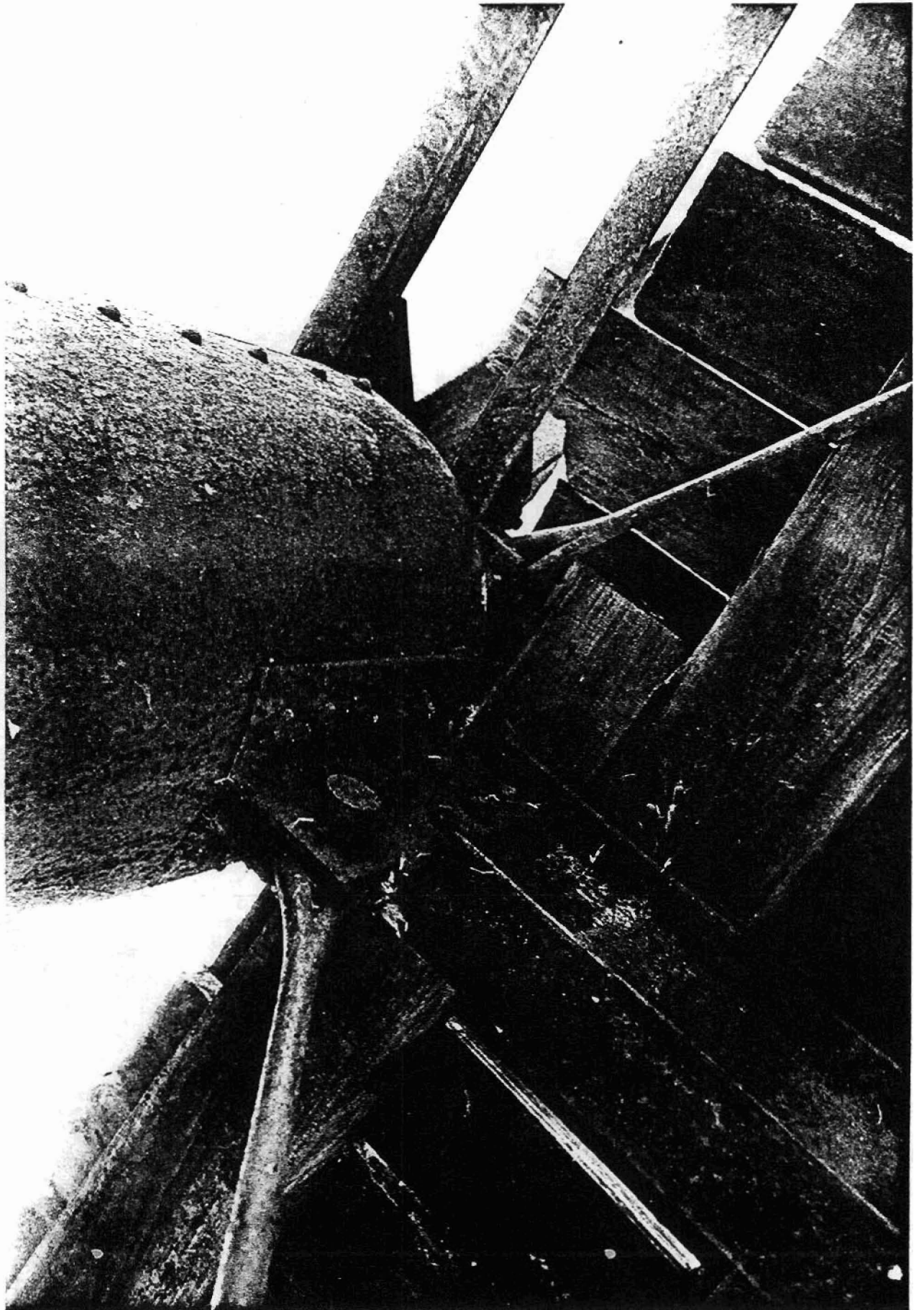
11. Form Prepared By

name/title Michael Swanda, Survey Coordinator

organization Arkansas Historic Preservation Program date February 5, 1990

street & number 225 East Markham Street telephone (501) 371-2763

city or town Little Rock state Arkansas zip code 72201



MOUNTAIN FORK BRIDGE

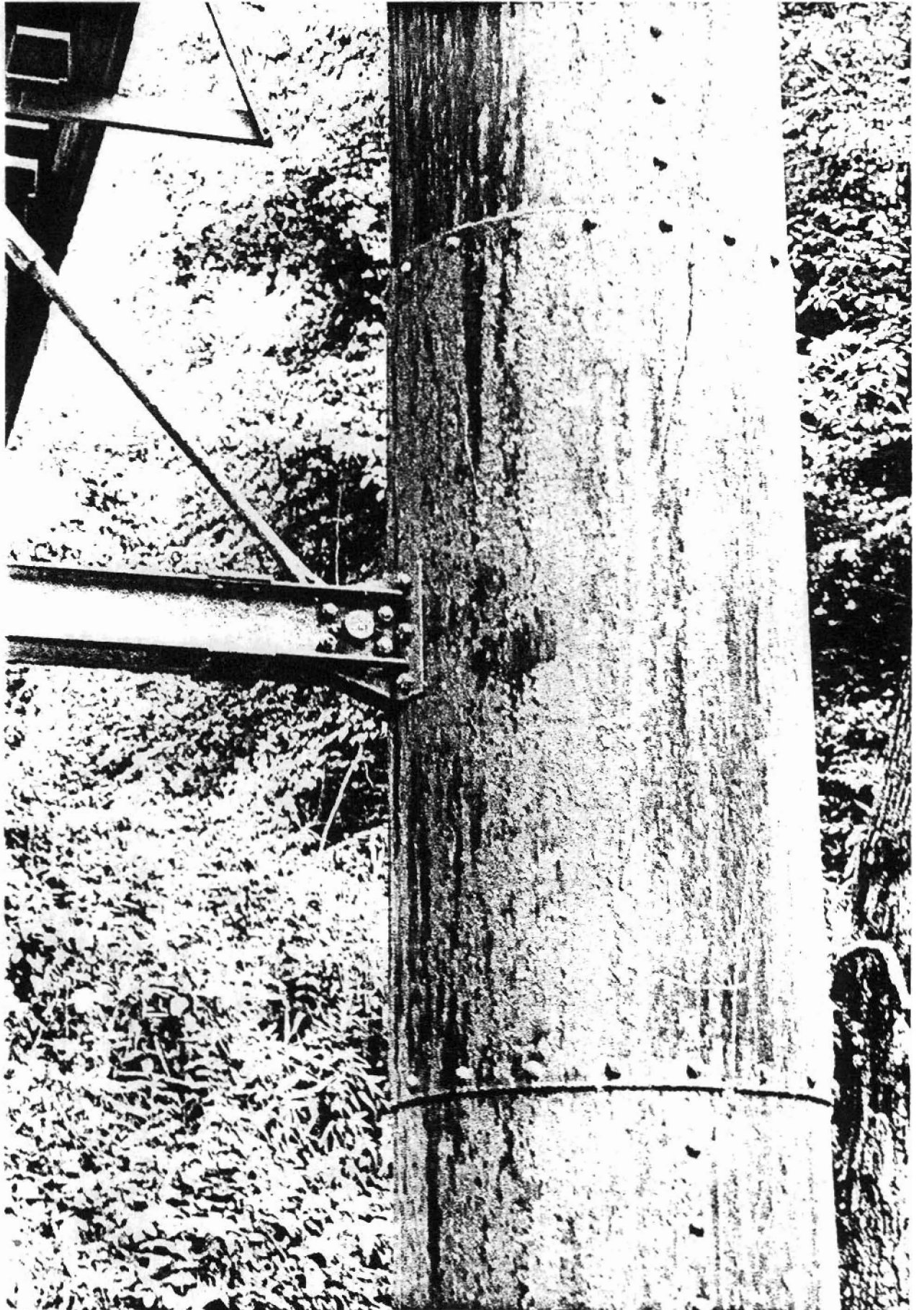
MENA VICINITY, ARKANSAS

PHOTOGRAPHER, MICHAEL SWANDA

MAY, 1989

NEGATIVE ON FILE AT AHPP

DETAIL VIEW OF PIER



MOUNTAIN FORK BRIDGE

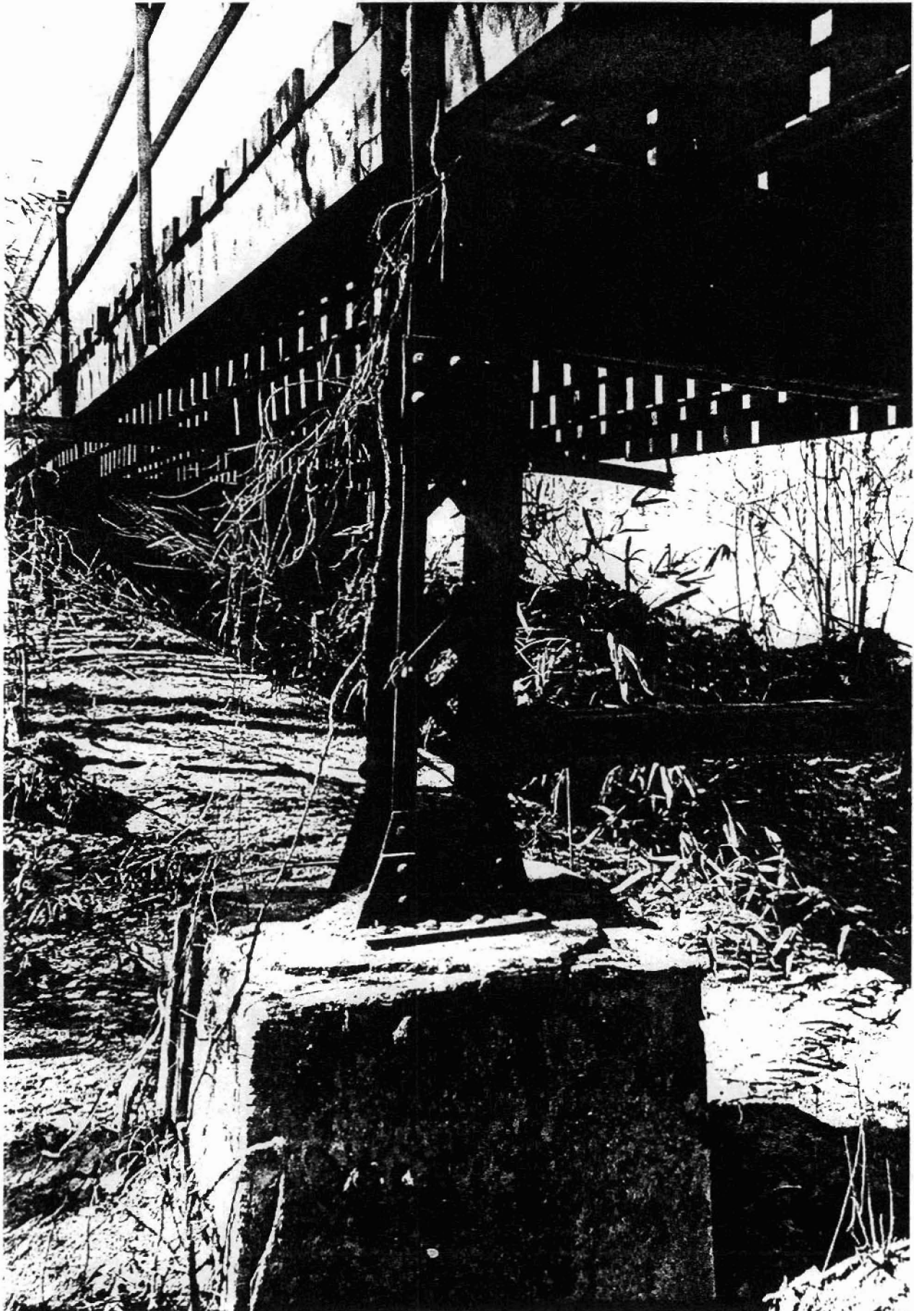
MENA VICINITY, ARKANSAS.

PHOTOGRAPHER, MICHAEL SWANWIT

MAY, 1989

NEGATIVE ON FILE AT AHPP

VIEW LOOKING EAST



MOUNTAIN FORK BRIDGE

ARIZONA VICINITY, ARIZONA

PHOTOGRAPHER, MICHAEL SWANSON

MAY, 1989

NEGATIVE ON FILE AT AHPP

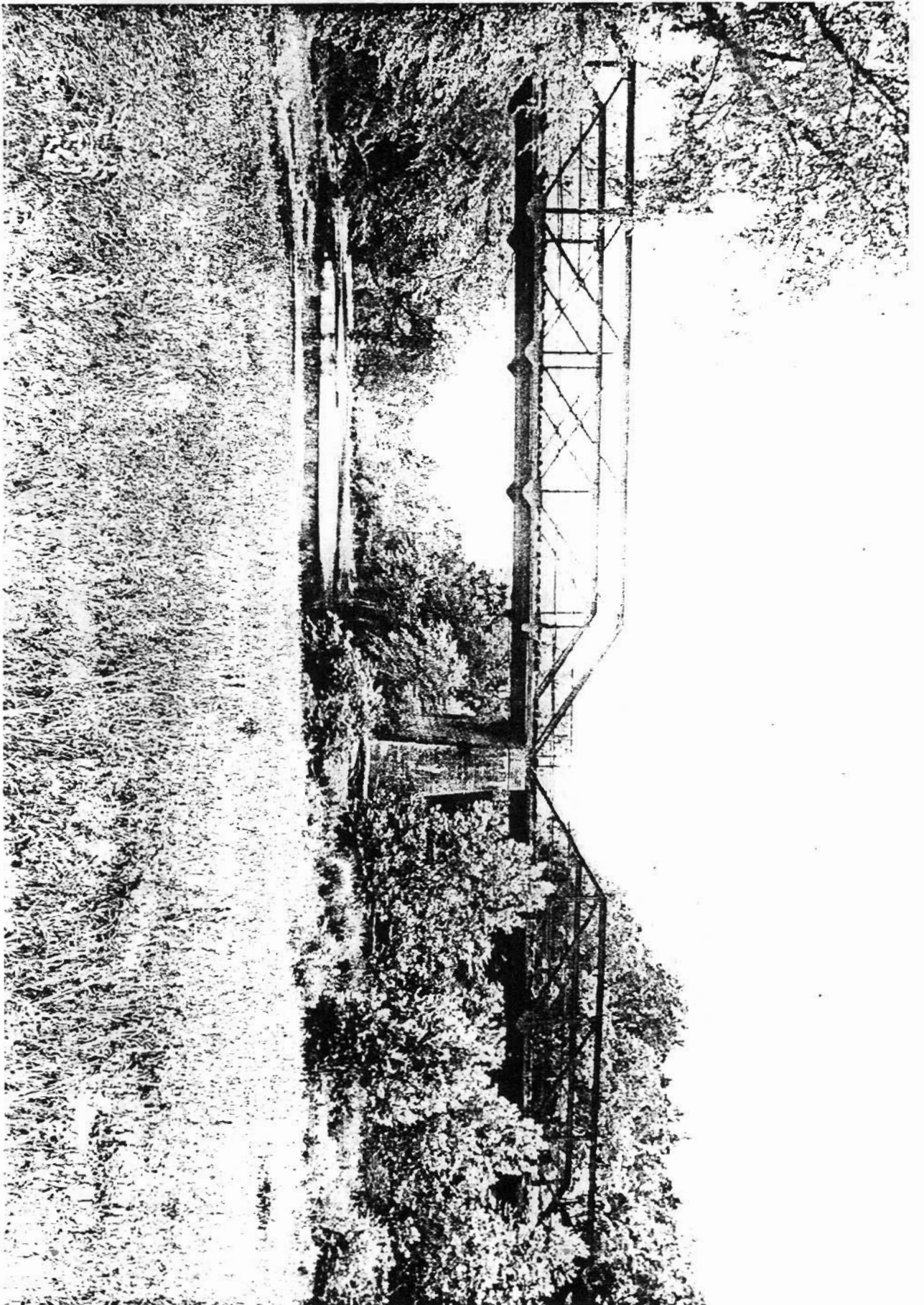
VIEW LOOKING EAST

DETAIL OF APPROACH SPAN PIER



MOUNTAIN FORK BRIDGE
MOUNT VERNON VICINITY, ARKANSAS
PHOTOGRAPHER, MICHAEL SWANWIT
MAY, 1989

NEGATIVE ON FILE AT AHPP
VIEW LOOKING EAST



MOUNTAIN FORK BRIDGE

MEMA VIEW, ARIZONA

PHOTOGRAPHER, MICHAEL SWANSON

JULY, 1988

NEGATIVES ON FILE AT AHPP

VIEW LOOKING SOUTH



MOUNTAIN FORK BRIDGE

MEMA VICINITY, ARKANSAS

PHOTOGRAPHER, MICHAEL SWANWIT

MAY, 1989

NEGATIVE ON FILE AT AHHP

VIEW LOOKING EAST

United States Department of the Interior
National Park Service

National Register of Historic Places Continuation Sheet

Section number 8 Page 1

Constructed during the Early Transportation Era: 1803-1922 by an unknown builder, the Mountain Fork Bridge survives as an excellent Arkansas example of a Pratt steel pony-truss bridge. The Pratt pony-truss design was very common in Arkansas in the late 19th and early 20th centuries and was readily available to county judges and interested parties from a variety of bridge companies. Its design features reflect the bridge engineering period preceding the creation of the Arkansas Highway and Transportation Department in 1923, which brought about the standardization of the most commonly used bridge designs. It is believed that the Mountain Fork Bridge was constructed in the early 1900's. As such, it is nominated under Criteria A and C with statewide significance.

