

NRL listed: 5-19-03

United States Department of the Interior
National Park Service

National Register of Historic Places
Registration Form

This form is for use in nominating or requesting determinations for individual properties and districts. See instructions in *How to Complete the National Register of Historic Places Registration Form* (National Register Bulletin 16A). Complete each item by marking "x" in the appropriate box or by entering the information requested. If an item does not apply to the property being documented, enter "N/A" for "not applicable." For functions, architectural classification, materials, and areas of significance, enter only categories and subcategories from the instructions. Place additional entries and narrative items on continuation sheets (NPS Form 10-900a). Use a typewriter, word processor, or computer, to complete all items.

1. Name of Property

historic name Murfreesboro Cities Service Station

other names/site number Site #PI0029

2. Location

street & number NE side of the Town Square

not for publication

city or town Murfreesboro

vicinity

state Arkansas code AR county Pike code 109 zip code 71958

3. State/Federal Agency Certification

As the designated authority under the National Historic Preservation Act, as amended, I hereby certify that this nomination request for determination of eligibility meets the documentation standards for registering properties in the National Register of Historic Places and meets the procedural and professional requirements set for in 36 CFR Part 60. In my opinion, the property meets does not meet the National Register criteria. I recommend that this property be considered significant nationally statewide locally. (See continuation sheet for additional comments.)

Cathie M. ...
Signature of certifying official/Title

4/3/03
Date

Arkansas Historic Preservation Program
State or Federal agency and bureau

In my opinion, the property meets does not meet the National Register criteria. (See Continuation sheet for additional comments.)

Signature of certifying official/Title

Date

State or Federal agency and bureau

4. National Park Service Certification

I hereby certify that the property is:

- entered in the National Register.
 - See continuation sheet
- determined eligible for the National Register.
 - See continuation sheet
- determined not eligible for the National Register.
- removed from the National Register.
- other, (explain:)

Signature of the Keeper

Date of Action

_____	_____
_____	_____
_____	_____
_____	_____

5. Classification

Ownership of Property

(Check as many boxes as apply)

- private
- public-local
- public-State
- public-Federal

Category of Property

(Check only one box)

- building(s)
- district
- site
- structure
- object

Number of Resources within Property

(Do not include previously listed resources in count.)

Contributing	Noncontributing	
1		buildings
		sites
		structures
		objects
1		Total

Name of related multiple property listing

(Enter "N/A" if property is not part of a multiple property listing.)

Arkansas Highway History and Architecture, 1910-1965

Number of Contributing resources previously listed in the National Register

6. Function or Use

Historic Functions

(Enter categories from instructions)

COMMERCE/TRADE/specialty store

Current Functions

(Enter categories from instructions)

VACANT/NOT IN USE

7. Description

Architectural Classification

(Enter categories from instructions)

LATE 19TH AND 20TH CENTURY REVIVALS/Tudor
or English Revival

Materials

(Enter categories from instructions)

foundation BRICK

walls BRICK

roof ASPHALT

other

Narrative Description

(Describe the historic and current condition of the property on one or more continuation sheets.)

8. Statement of Significance

Applicable National Register Criteria

Mark "x" in one or more boxes for the criteria qualifying the property for National Register listing.)

- A Property is associated with events that have made a significant contribution to the broad patterns of our history.
B Property is associated with the lives of persons significant in our past.
C Property embodies the distinctive characteristics of a type, period, or method of construction or represents the work of a master, or possesses high artistic values, or represents a significant and distinguishable entity whose components lack individual distinction.
D Property has yielded, or is likely to yield, information important in prehistory or history.

Criteria Considerations

(Mark "x" in all the boxes that apply.)

Property is:

- A owned by a religious institution or used for religious purposes.
B removed from its original location.
C birthplace or grave of a historical figure of outstanding importance.
D a cemetery.
E a reconstructed building, object, or structure.
F a commemorative property
G less than 50 years of age or achieved significance within the past 50 years.

Levels of Significance (local, state, national)

Local

Areas of Significance (Enter categories from instructions)

Architecture

Transportation

Period of Significance

1939-1953

Significant Dates

1939

Significant Person (Complete if Criterion B is marked)

Cultural Affiliation (Complete if Criterion D is marked)

Architect/Builder

A. P. Terrell, Builder

Narrative Statement of Significance

(Explain the significance of the property on one or more continuation sheets.)

9. Major Bibliographical References

Bibliography

(Cite the books, articles, and other sources used in preparing this form on one or more continuation sheets.)

Previous documentation on file (NPS):

- preliminary determination of individual listing (36 CFR 67) has been requested
previously listed in the National Register
Previously determined eligible by the National Register
designated a National Historic Landmark
recorded by Historic American Buildings Survey #
recorded by Historic American Engineering Record #

Primary location of additional data:

- State Historic Preservation Office
Other State Agency
Federal Agency
Local Government
University
Other

Name of repository: Murfreesboro Community Foundation

10. Geographical DataAcreage of Property Less than one.**UTM References**

(Place additional UTM references on a continuation sheet.)

1	<u>15</u>	<u>436376</u>	<u>3769096</u>	3	<u> </u>	<u> </u>	<u> </u>
	Zone	Easting	Northing		Zone	Easting	Northing
2	<u> </u>	<u> </u>	<u> </u>	4	<u> </u>	<u> </u>	<u> </u>

 See continuation sheet**Verbal Boundary Description**

(Describe the boundaries of the property on a continuation sheet.)

Boundary Justification

(Explain why the boundaries were selected on a continuation sheet.)

11. Form Prepared By

name/title Ralph S. Wilcox, National Register & Survey Coordinator
 organization Arkansas Historic Preservation Program date April 3, 2003
 street & number 1500 Tower Building, 323 Center Street telephone (501) 324-9787
 city or town Little Rock state AR zip code 72201

Additional Documentation

Submit the following items with the completed form:

Continuation Sheets**Maps**

A USGS map (7.5 or 15 minute series) indicating the property's location

A Sketch map for historic districts and properties having large acreage or numerous resources.

Photographs

Representative black and white photographs of the property.

Additional items

(Check with the SHPO or FPO for any additional items.)

Property Owner

(Complete this item at the request of SHPO or FPO.)

name Murfreesboro Community Foundation
 street & number PO Box 668 telephone 870-285-3133
 city or town Murfreesboro state AR zip code 71958

Paperwork Reduction Act Statement: This information is being collected for applications to the National Register of Historic Places to nominate properties for listing or determine eligibility for listing, to list properties, and to amend existing listing. Response to this request is required to obtain a benefit in accordance with the National Historic Preservation Act, as amended (16 U.S.C. 470 *et seq.*)

Estimated Burden Statement: Public reporting burden for this form is estimated to average 18.1 hours per response including time for reviewing instructions, gathering and maintaining data, and completing and reviewing the form. Direct comments regarding this burden estimate or any aspect of this form to the Chief, Administrative Services Division, National Park Service, P. O. Box 37127, Washington, DC 20013-7127; and the Office of Management and Budget, Paperwork Reductions Projects (1024-0018), Washington, DC 20303.

United States Department of the Interior
National Park Service

National Register of Historic Places Continuation Sheet

Section number 7 Page 1

SUMMARY

The Murfreesboro Cities Service Station is located on the northeast side of the Town Square. The brick building sits atop a continuous brick foundation, and is topped by an intersecting gable roof. It is the only example of an English Revival style gas station in Murfreesboro.

ELABORATION

Located on the northeast side of the Town Square, the Murfreesboro Cities Service Station is an excellent example of simplified English Revival style architecture. The rectangular-shaped service station is constructed of brick, and rests on a continuous brick foundation. The building supports an intersecting gable roof sheathed in diamond-shaped asphalt shingles. In the apex of each of the three gables is an oculus that originally displayed a glass middle with the Cities Service logo, surrounded by brick with exposed ends.

West/Front Elevation

The west elevation fronts Arkansas Highway 26 and it is through this entrance that the office was located. Two large, stationary picture windows supported by concrete sills flank the front door. Green fabric awnings are placed above the front windows and entrance. The defining feature of the front elevation is the steeply pitched intersecting front gable, one of the distinguishing characteristics of English Revival architecture. An oculus exists in the center of the gable.

South/Side Elevation

The south elevation is fenestrated with one window and one door. The large stationary window is on the west side of the façade, and is supported by a concrete sill. The doorway is on the east side of the façade, and contains a wood door with a window in the top half and three horizontal panels in the bottom half. Green fabric awnings are placed above the window and doorway. An oculus also exists in the center of the gable, and it still retains the original Cities Service logo.

East/Rear Elevation

Four evenly spaced small windows adorn the rear elevation towards the top of the façade. Each window is supported by a concrete sill and displays two vertical muntins. The original windows are still in place.

North/Side Elevation

The north elevation is fenestrated like the south elevation with one window and one door. The large stationary window is on the west side of the façade, and is supported by a concrete sill. The doorway is on the east side of the façade, and contains a wood door with a window in the top half and three horizontal panels in the bottom half. An air vent also exists low in the wall in between the window and the door. Green fabric awnings are placed above the window and doorway. An oculus also exists in the center of the gable.

United States Department of the Interior
National Park Service

National Register of Historic Places Continuation Sheet

Section number 7 Page 2

Integrity

The Murfreesboro Cities Service Station possesses a strong sense of integrity. There have been no structural alterations to the building throughout the years. The gas pumps were removed at an unknown date. The station maintains its integrity of location and setting, since it is located on Arkansas Highway 26 on the northeast side of the Town Square in downtown Murfreesboro. The building beautifully displays the workmanship, design, features, and materials used at the time of its construction. The building was built from a standard Cities Service design, and matches the Rison Cities Service Station in Rison, Cleveland County, Arkansas, (NR listed 05/10/01) and the Walter Patterson Filling Station in Clinton, Van Buren County, Arkansas (NR listed 02/09/01). The building is currently vacant. The interior of the building is very plain with no lavish adornments.

United States Department of the Interior
National Park Service

National Register of Historic Places Continuation Sheet

Section number 8 Page 1

SUMMARY

The Murfreesboro Cities Service Station is being nominated to the National Register of Historic Places with **local significance** under **Criterion A** for its association with the development of Arkansas highway culture. The Murfreesboro Cities Service Station is being submitted to the National Register of Historic Places under the multiple property listing "Arkansas Highway and Transportation Era Architecture, 1910-1965" in conjunction with the historic context "Arkansas Highway History and Architecture, 1910-1965."

ELABORATION

Pike County was established by an act of the Arkansas Territorial Legislature on November 1, 1833, and was one of the original counties of Arkansas when it became a state in 1836. The county was named after Zebulon Pike, who had discovered Colorado's Pikes Peak in 1806.¹ Also in 1836, the Arkansas General Assembly appointed three commissioners, John Hughes, Rice Stringer, and Henry Brewer, to lay off the town and sell the lots to the highest bidder. The money was to be spent on building a courthouse and jail.²

The original name for Murfreesboro was Zebulon. Although the exact origins of the name are unknown, it is likely that it was named after Zebulon Pike, who also gave his name to Pike County. Later, however, the name was changed to Murfreesborough (Murfreesboro). According to legend, many of the new settlers in the area came from Tennessee, and the name was chosen to honor Murfreesboro, Tennessee.³

As transportation methods changed, and the automobile became more prevalent, it was necessary to provide facilities, including service stations, to cater to motorists. According to Jean Louise, a historical consultant, "After WWI, assembly lines began producing inexpensive cars at a rapid rate, highway construction boomed and the market for automobile petroleum exploded." During the 1920s many oil companies began refining their marketing strategies, which included adopting distinctive signs and gas station designs. The most prevalent style for gas stations in the 1920s was the domestic style – gas stations that resembled small houses with hipped or gabled roofs – these designs blended nicely with their residential surroundings. For motorists passing by, these domestic designs triggered positive associations such as friendliness, comfort, and security. Many of these buildings were prefabricated and could be ordered from a magazine and built on site by local craftsmen. There are several Cities Service stations located throughout Arkansas that are designed in a plan almost identical to the Murfreesboro Cities Service Station; therefore, it is very possible that this station was

¹ Pike County Heritage Club. *Early History of Pike County, Arkansas*. Delight, AR: Alexander Printing Company, Inc., 1978, p.16.

² Pike County Heritage Club, p.69.

³ Ibid.

United States Department of the Interior
National Park Service

National Register of Historic Places Continuation Sheet

Section number 8 Page 2

a prefabricated design used for marketing purposes by those oil companies that were subsidiaries of Cities Service.⁴

The Cities Service Station in Murfreesboro was built in 1939 by A. P. Terrell. The brick used to construct the building was reused from the Leader Building that originally stood on the site. The station was leased to the Arkansas Fuel Oil Company, and was first operated by Alton Terrell. He operated the station for only two years.⁵ Little information is known about the subsequent history of the building, but it is known that the building remained in use as a gas station up into the 1980s.

When the Murfreesboro Community Foundation purchased the building c.1989, the gas station had closed and was left vacant. Over the years a small addition had been built on the north side of the building. In addition, the front gable had been removed, and a large canopy had been attached to the building. After the foundation purchased the building, the goal was to restore the building back to its original condition. As a result, the addition and canopy were removed and the front gable was reconstructed based on a historic photograph of the building.⁶ Although it was recently used as an office for the Murfreesboro Chamber of Commerce, it is currently vacant.

The Murfreesboro Cities Service Station is a good example of the small, residential-style gas stations that were popular all across the country in the first part of the twentieth-century. In addition, the meticulous restoration of the building is a testament to the dedication of the Murfreesboro Community Foundation and the residents of Murfreesboro.

STATEMENT OF SIGNIFICANCE

The Murfreesboro Cities Service Station is being nominated to the National Register of Historic Places with **local significance** under **Criterion A** for its association with the development of Arkansas highway culture. The Murfreesboro Cities Service Station is being submitted to the National Register of Historic Places under the multiple property listing "Arkansas Highway and Transportation Era Architecture, 1910-1965" in conjunction with the historic context "Arkansas Highway History and Architecture, 1910-1965."

⁴ Oosterhous, Kara. *Rison Cities Service Station*. National Register of Historic Places Registration Form. From the files of the Arkansas Historic Preservation Program, 2001, p.8-1.

⁵ Terrell, Jane. Letter to the author. 27 January 2003.

⁶ Terrell, Jane. Telephone conversation with the author. 30 January 2003.

United States Department of the Interior
National Park Service

National Register of Historic Places Continuation Sheet

Section number 9 Page 1

BIBLIOGRAPHY

Oosterhous, Kara. *Rison Cities Service Station*. National Register of Historic Places Registration Form. From the files of the Arkansas Historic Preservation Program, 2001.

Pike County Heritage Club. *Early History of Pike County, Arkansas*. Delight, AR: Alexander Printing Company, Inc., 1978.

Terrell, Jane. Letter to the author. 27 January 2003.

Terrell, Jane. Telephone conversation with the author. 30 January 2003.

Murfreesboro Cities Service Station
Name of Property

Pike County, Arkansas
County and State

United States Department of the Interior
National Park Service

National Register of Historic Places Continuation Sheet

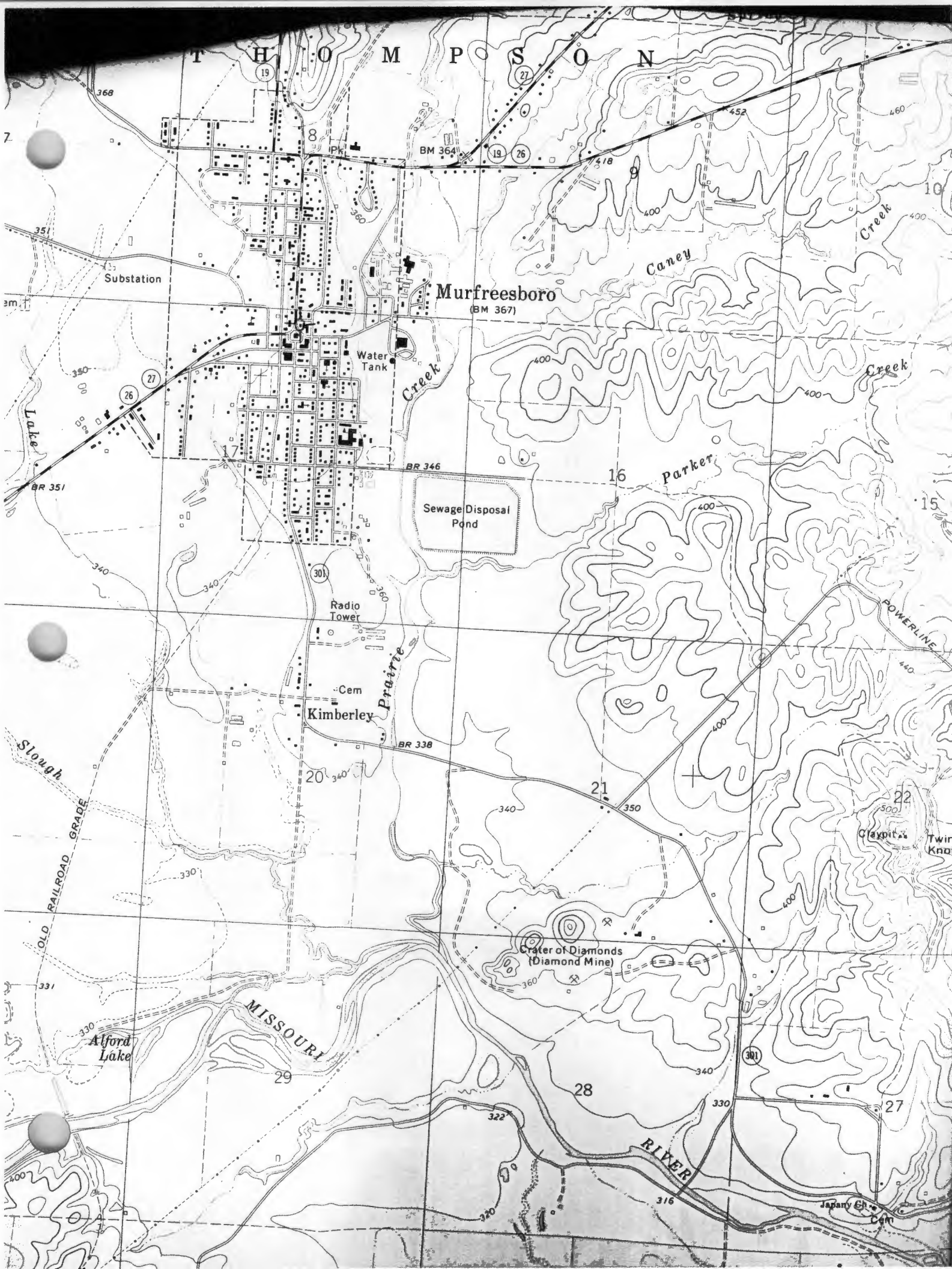
Section number 10 Page 1

VERBAL BOUNDARY DESCRIPTION

Lot No. 6 in Block 2 of Original Survey of the Town of Murfreesboro, Arkansas, per plat thereof recorded in Deed Record Book 1, page 158, of the Deed Records of Pike, County, Arkansas.

BOUNDARY JUSTIFICATION

The boundary contains the land that is historically associated with the Murfreesboro Cities Service Station.



T H O M P S O N

Murfreesboro
(BM 367)

Caney

Creek

Creek

Creek

Parker

Sewage Disposal Pond

Radio Tower

Cem
Kimberley

Slough

OLD RAILROAD GRADE

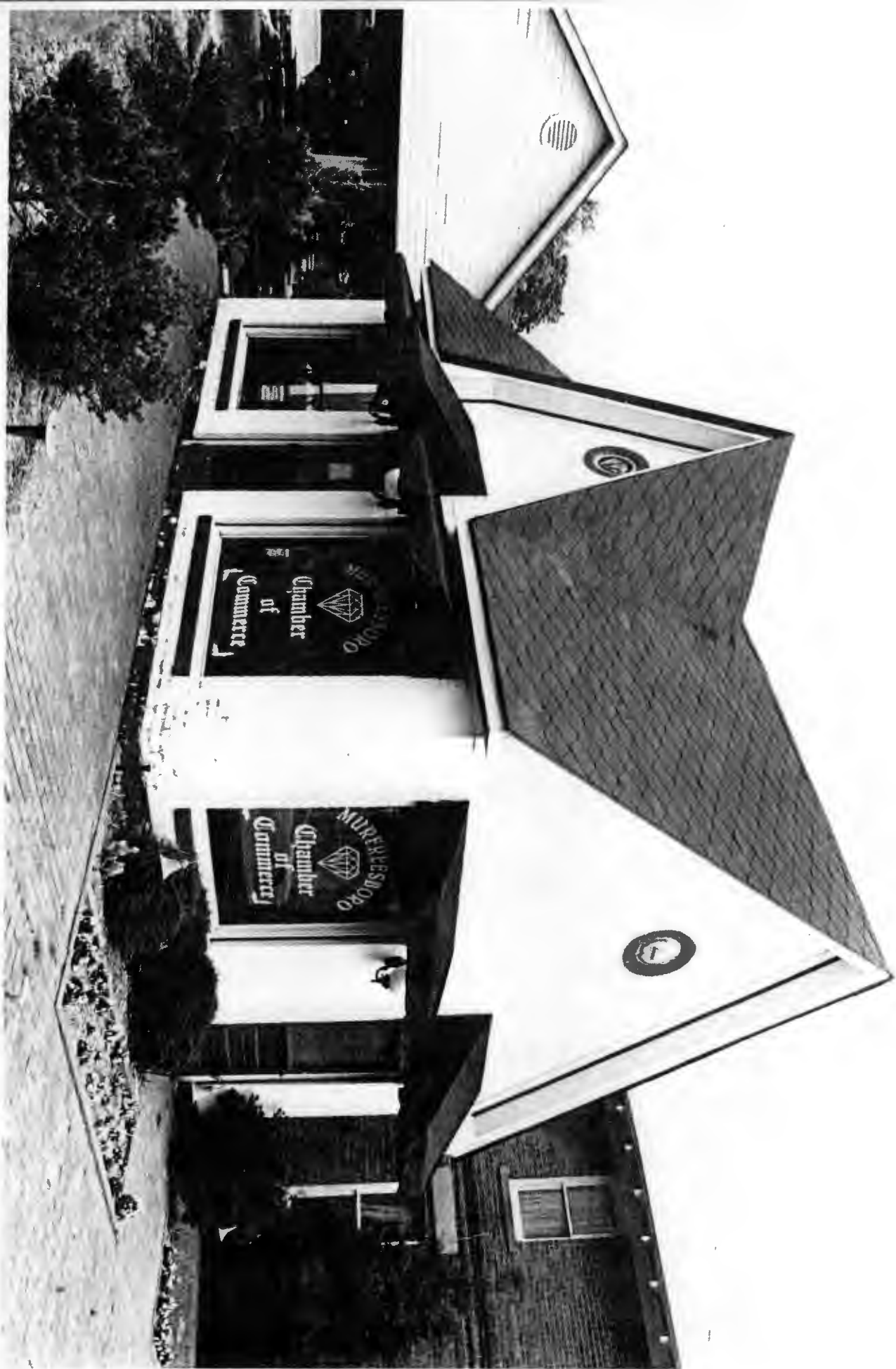
Crater of Diamonds
(Diamond Mine)

MISSOURI

Alford Lake

RIVER

Japany Cr.
Cem



MURKESBORO
Chamber
of
Commerce

MURKESBORO
Chamber
of
Commerce