

United States Department of the Interior
National Park Service

National Register of Historic Places Registration Form

This form is for use in nominating or requesting determinations for individual properties and districts. See instructions in *How to Complete the National Register of Historic Places Registration Form* (National Register Bulletin 16A). Complete each item by marking "x" in the appropriate box or by entering the information requested. If an item does not apply to the property being documented, enter "N/A" for "not applicable." For functions, architectural classification, materials, and areas of significance, enter only categories and subcategories from the instructions. Place additional entries and narrative items on continuation sheets (NPS Form 10-900a). Use a typewriter, word processor, or computer, to complete all items.

1. Name of Property

historic name Self Creek Bridge

other names/site number (PI0025)

2. Location

street & number U.S. Hwy 70, spanning Self Creek and Lake Greeson

not for publication

city or town Daisy

vicinity

state Arkansas

Code AR

county Pike

code 109

zip code 71939

zip code 71939

3. State/Federal Agency Certification

As the designated authority under the National Historic Preservation Act, as amended, I hereby certify that this nomination
request for determination of eligibility meets the documentation standards for registering properties in the National Register of Historic
Places and meets the procedural and professional requirements set for in 36 CFR Part 60. In my opinion, the property meets
does not meet the National Register criteria. I recommend that this property be considered significant
 nationally statewide locally. (See continuation sheet for additional comments.)

Carolyn A. Sater
Signature of certifying official/Title

4-27-88
Date

Arkansas Historic Preservation Program

State or Federal agency and bureau

In my opinion, the property meets does not meet the National Register criteria. See Continuation sheet for additional
comments.)

Signature of certifying official/Title

Date

State or Federal agency and bureau

4. National Park Service Certification

I hereby certify that the property is:

entered in the National Register.
 See continuation sheet

determined eligible for the
National Register.
 See continuation sheet

determined not eligible for the
National Register.

removed from the National
Register.

other, (explain:)

Signature of the Keeper

Date of Action

Self Creek Bridge

Name of Property

Pike County

County and State

5. Classification

Ownership of Property

(Check as many boxes as apply)

- private
- public-local
- public-State
- public-Federal

Category of Property

(Check only one box)

- building(s)
- district
- site
- structure
- object

Number of Resources within Property

(Do not include previously listed resources in count.)

Contributing	Noncontributing	
		buildings
		sites
1		structures
		objects
1	0	Total

Name of related multiple property listing

(Enter "N/A" if property is not part of a multiple property listing.)

Historic Bridges of Arkansas--Post WWII Era

Number of Contributing resources previously listed in the National Register

N/A

6. Function or Use

Historic Functions

(Enter categories from instructions)

Transportation/Road-Related

Current Functions

(Enter categories from instructions)

Transportation/Road-Related

7. Description

Architectural Classification

(Enter categories from instructions)

Other: open spandrel deck arch

Materials

(Enter categories from instructions)

Foundation CONCRETE

walls CONCRETE

roof N/A

other

Narrative Description

(Describe the historic and current condition of the property on one or more continuation sheets.)

Description

Located on State Highway 70 (near the town of Daisy) at the point where it crosses between Self Creek and Lake Greeson, the Self Creek Bridge is of the open spandrel deck arch type. It consists of a total of three reinforced concrete spans, the longest of which is 200 feet. Its total length is 692 feet, its deck width is 25.9 feet and its overall width is 31.6 feet. The abutments, the two piers and the open arches that support the deck are all of reinforced concrete construction, as is the deck with its asphalt surface. A relatively elaborate concrete masonry balustrade runs the full length of each edge of the deck.

8. Statement of Significance

Applicable National Register Criteria

(Mark "x" in one or more boxes for the criteria qualifying the property for National Register listing.)

- Criteria A, B, C, and D with checkboxes. Criterion C is checked.

Criteria Considerations

(Mark "x" in all the boxes that apply.)

Property is:

- Criteria A through G with checkboxes. All are unchecked.

Levels of Significance (local, state, national)

Local

Areas of Significance (Enter categories from instructions)

Engineering

Period of Significance

1949

Significant Dates

1949

Significant Person (Complete if Criterion B is marked)

N/A

Cultural Affiliation (Complete if Criterion D is marked)

N/A

Architect/Builder

Arkansas Highway and Transportation--Architect

D. F. Jones Construction, Little Rock--Builder

Narrative Statement of Significance

(Explain the significance of the property on one or more continuation sheets.)

Significance

Constructed in 1949, the Self Creek Bridge is associated with the Post World War II Era historic context and is of the open spandrel deck arch type. The D.F. Jones Construction Company of Little Rock in conjunction with the Arkansas State Highway Commission erected the bridge for a cost of \$287,624.77. Given its intact condition it retains sufficient integrity to remain associated with its historic period; it is thus locally eligible under Criterion C.

Historic Background

The Lake Greason (Narrows Dam and Reservoir) project was authorized by the Flood Control act of 1941 as amended in 1944. Construction of the Dam was completed in 1950 with the Self Creek Bridge being completed the year before. Flood control and hydroelectric power were the authorized purposes of the project, though recreational fishing and

boating are two of the tourist attractions the man-made lake now provides. A total of 15,953 acres were acquired for the project. Approximately 111 acres were sold for private home sites. The dam and lake were the result of the efforts of Martin White Greeson for whom the lake was renamed around 1976. Until that time the lake was known as Narrows Lake for the dam that formed it.

9. Major Bibliographical References

Bibliography

(Cite the books, articles, and other sources used in preparing this form on one or more continuation sheets.)

Arkansas State Highway and Transportation Department. "OASIS INQUIRY—Structure Number A0285." (database), 2000.

"Lake Greeson Field Office Report," August 1985.

Murfreesboro Diamond, 15 July 1976.

Previous documentation on file (NPS):

- preliminary determination of individual listing (36 CFR 67) has been requested
- previously listed in the National Register
- Previously determined eligible by the National Register
- designated a National Historic Landmark
- recorded by Historic American Buildings Survey

- recorded by Historic American Engineering
Record # _____

Primary location of additional data:

- State Historic Preservation Office
- Other State Agency
- Federal Agency
- Local Government
- University
- Other

Name of repository:

Self Creek Bridge
Name of Property

Pike County, Arkansas
County and State

10. Geographical Data

Acreeage of Property Less than one

UTM References

(Place additional UTM references on a continuation sheet.)

1 15 430320 3788440
Zone Easting Northing
2 _____

3 _____
Zone Easting Northing
4 _____

See continuation sheet

Verbal Boundary Description

(Describe the boundaries of the property on a continuation sheet.)

Beginning at a point formed by the intersection of the northern edge of State Highway 70 with a perpendicular line running parallel with the western end of the bridge, proceed northerly for a distance of approximately 10 feet to it's intersection with a perpendicular line running parallel with the bridge's northern side; then proceed easterly along said line for a distance of approximately 692 feet to its intersection with a perpendicular running along the eastern end of the bridge, thence proceed southerly approximately 60 feet along said line to its intersection with with a perpendicular line that runs parallel to the bridge's southern side; then proceed westerly along said line for a distance of approximately 692 feet to its intersection with a perpendicular line; thence proceed northerly to the point of beginning.

Boundary Justification

(Explain why the boundaries were selected on a continuation sheet.)

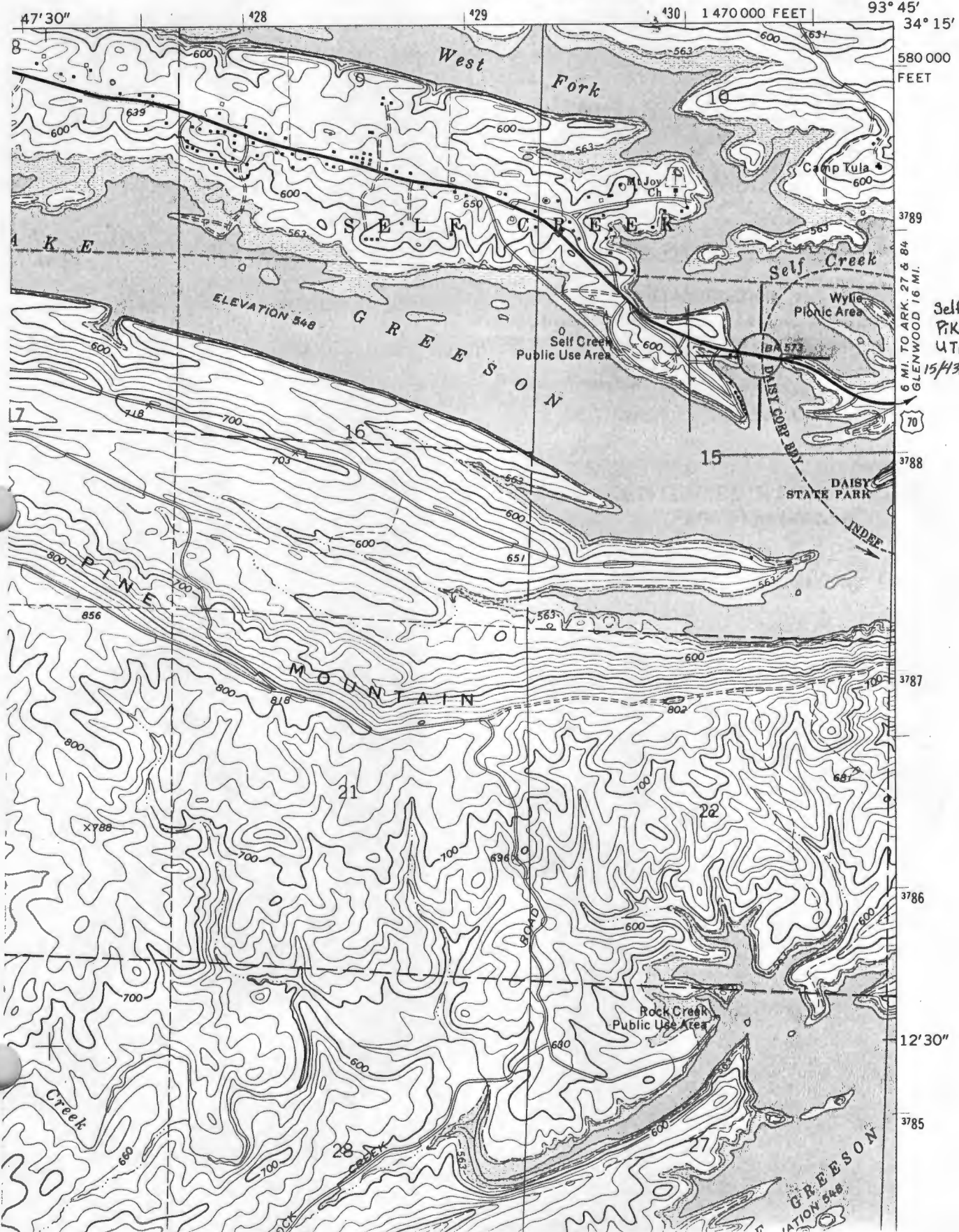
This boundary contains the bridge, piers, and abutments, all of which are historically associated with this resource.

11. Form Prepared By

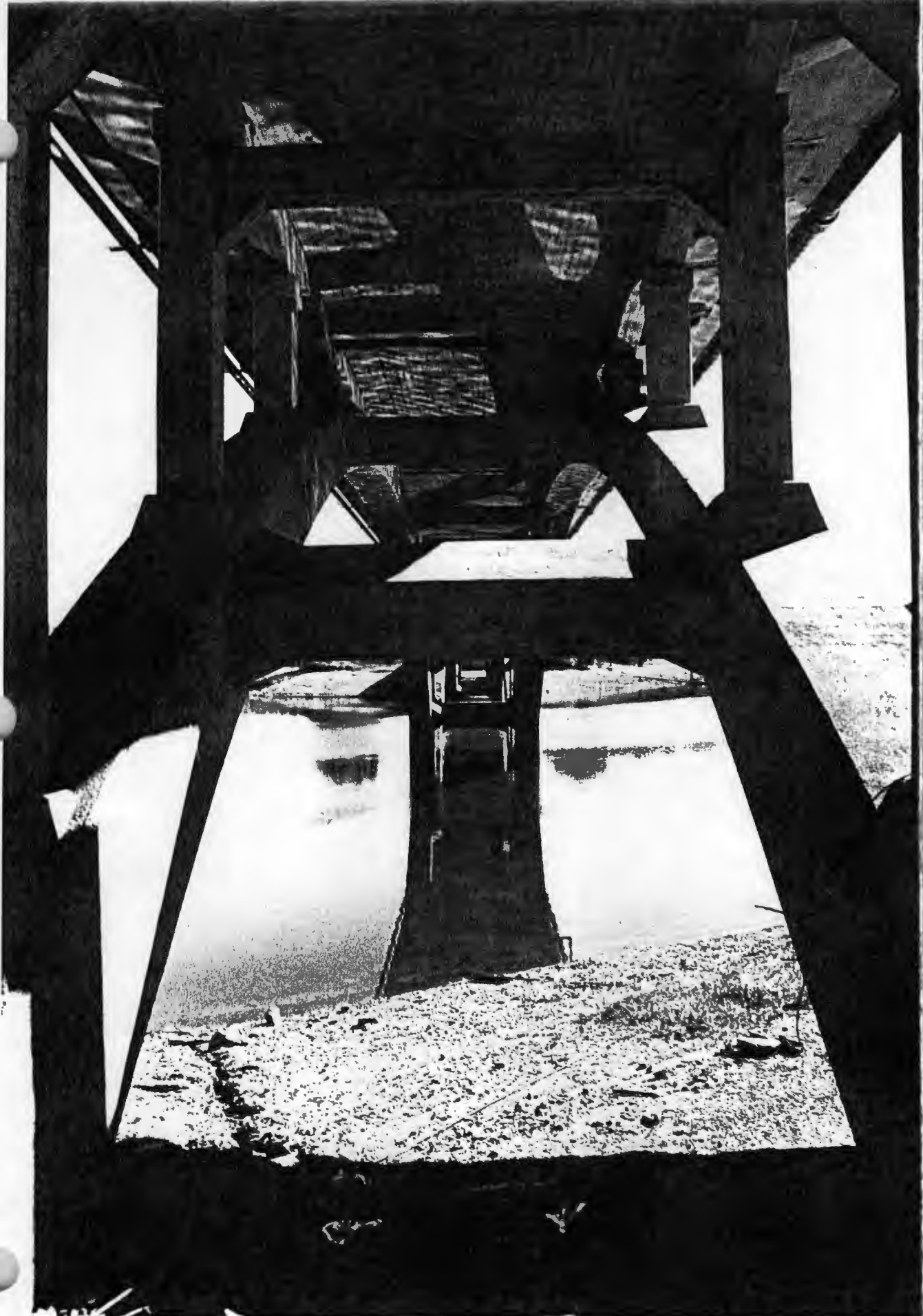
name/title Amy Bennett/Survey Historian
organization Arkansas Historic Preservation Program date March 20, 2000
street & number 1500 Tower Building, 323 Center Street telephone (501) 324-9880
city or town Little Rock State AR zip code 72201

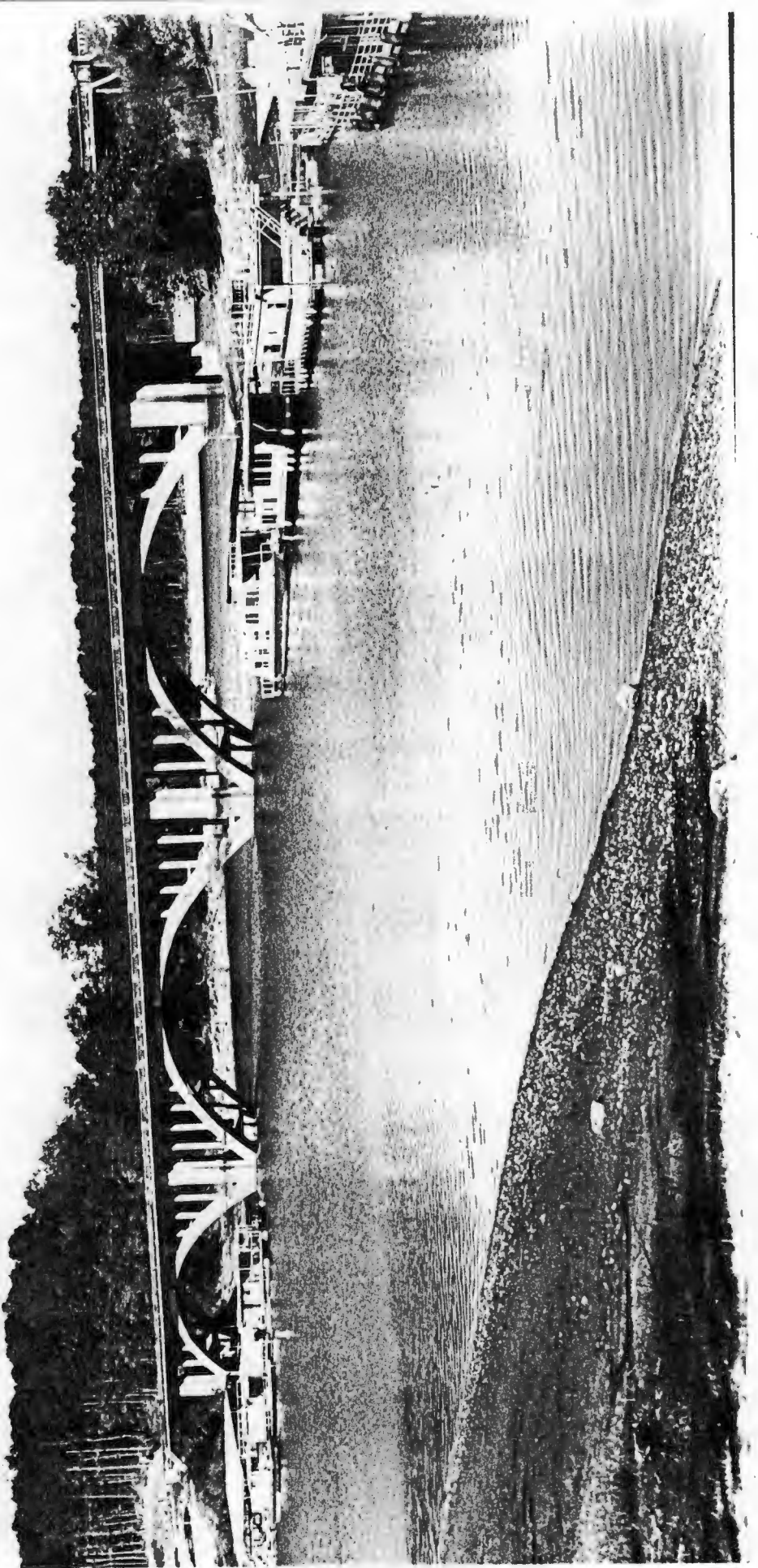
CENTER POINT NE QUADRANGLE
ARKANSAS
7.5 MINUTE SERIES (TOPOGRAPHIC)

7252 1
(GLENWOOD 1:62 500)

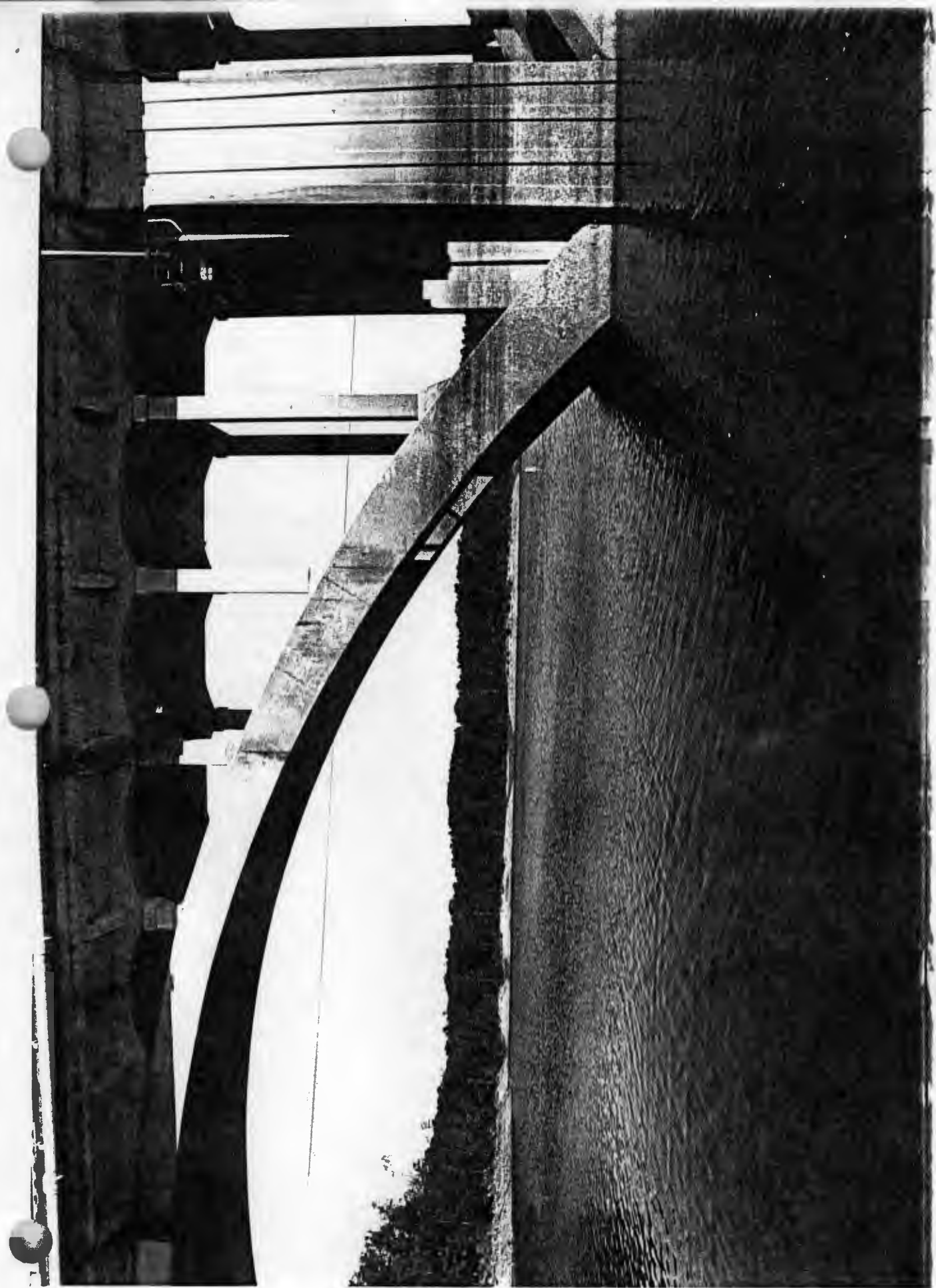


Self Creek Bridge
Pike Co., Arkansas
UTM Reference:
15/430320/3788440









SELF CREEK
B. F. JAMES, INVENTOR
1949
SERIAL NO. _____