

EXP. 12/31/84
75-1050-61
For NPS records
received
date entered

National Register of Historic Places Inventory—Nomination Form

Continuation sheet 214 Item number 1, 2, 4, 6 & 10 Page 1

INDIVIDUAL DATA SHEET

General Description

Code: PH-077

Congressional District: First

Name: White House
Address: 1015 Perry Street
Helena, Arkansas
County: Phillips

Current Owner: John C. and Elizabeth Hardman
Address: 1015 Perry Street
Helena, Arkansas 72342

Architectural Information

Architectural Firm: Charles Thompson

Date of Construction: ca. 1910

Stylistic Influence: Colonial Revival

Original Use: Residence

Present Use: Residence

Geographical Information

UTM Reference: 15 720375 /3823625 Acreage: Less than one

Verbal Boundary Description: Eli J. Lewis Addition
Lot 25, 81' East and West x 179' NE SW side North end

Condition

Excellent
 Good
 Fair

Deteriorated
 Ruins
 Unexposed

Unaltered
 Altered

United States Department of the Interior
National Park Service

National Register of Historic Places Inventory—Nomination Form

of NPS Use Only
received
date entered

Continuation sheet 215

Item number 7 & 8

Page 2

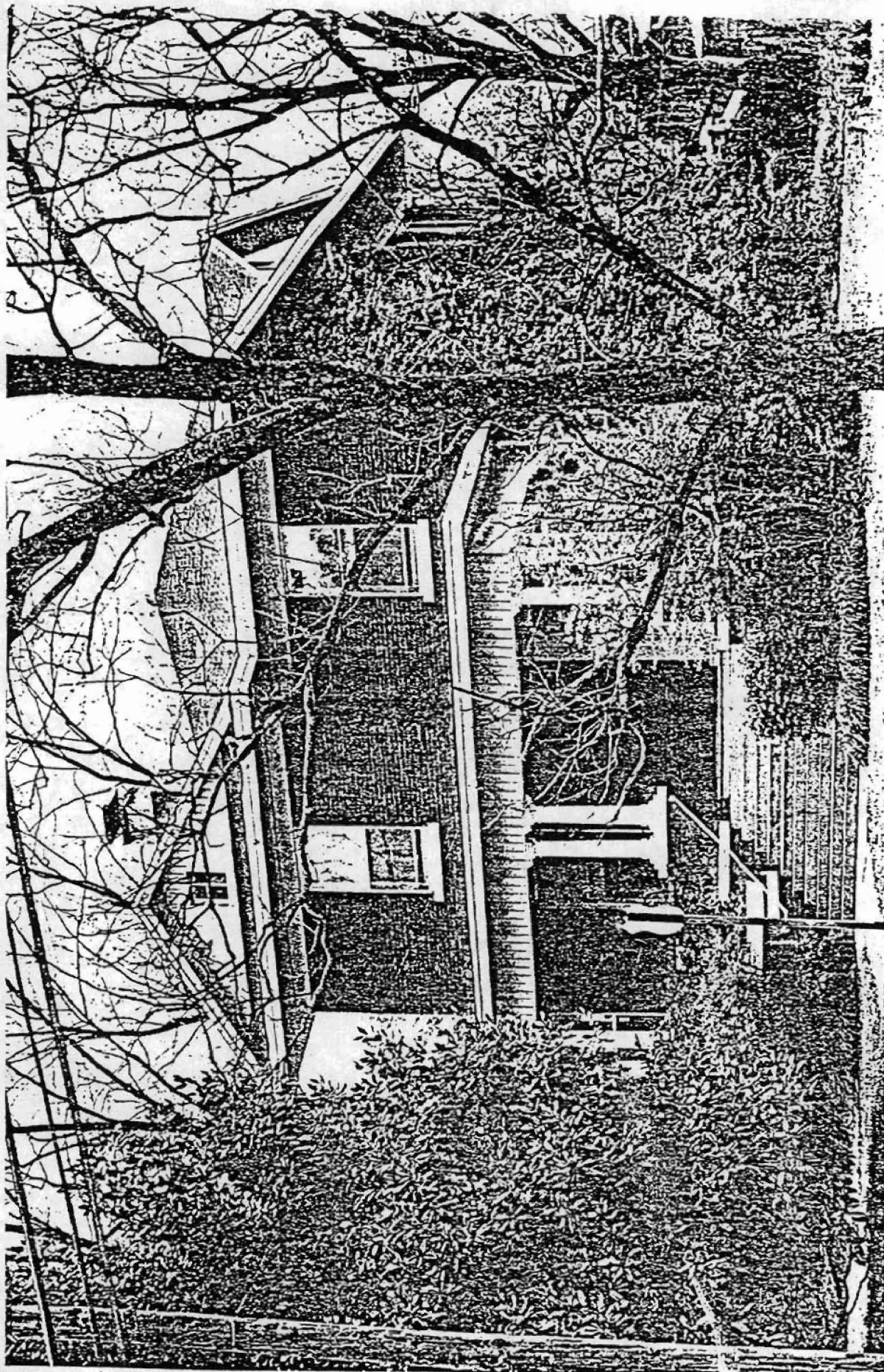
Code: PH-077 (1015 Perry Street, Helena, AR)

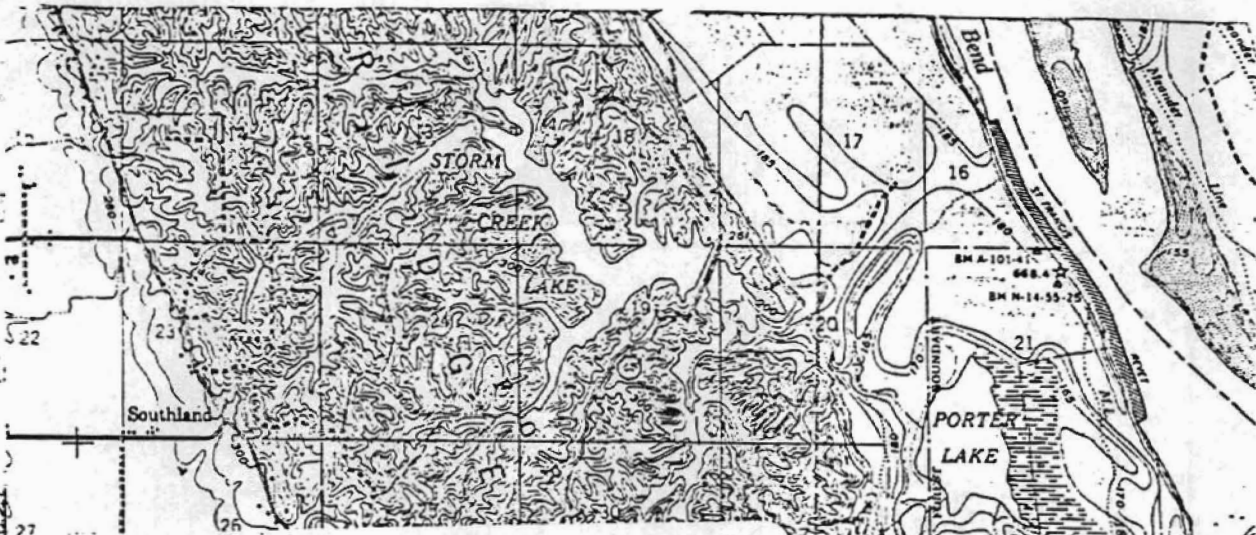
Physical Description

This large two-story house, faced with dark red brick, is capped by a shallow pyramid roof with an exaggerated overhang. Broad cross gables project on each elevation at the attic level. The full-length front porch unifies the facade from which one bay projects. The graceful, small-scale decorative elements of this porch are somewhat incongruous with the broad, simple massing which characterizes the house as a whole. Unusually fine detailed Tuscan columns with attic bases rest on brick plinths with cast stone coping and support the flat roof of the porch and the plain frieze beneath. These columns appear in groups of three at the porch corners. Simple pilasters frame the doorway which has beveled plate glass windows and sidelights.

Statement of Significance

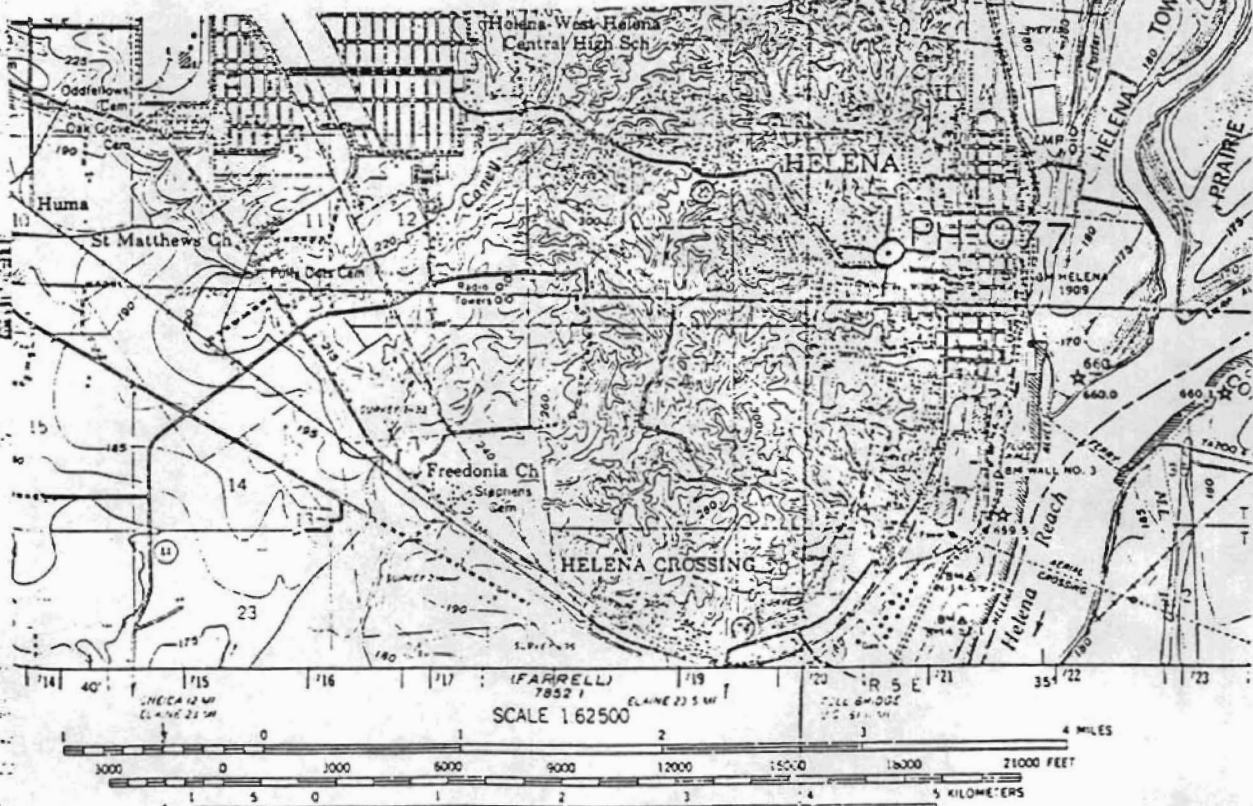
The White House in the historic Mississippi River town of Helena, Arkansas was designed by Charles L. Thompson ca. 1910. This house is a good example of the transition from Victorian styling to the interest in Colonial Revival. Thompson usually designed transitional residences to be constructed of wood however, the White House is of brick construction. The house is a less ornamented version of this design than many of Thompson's frame transitional houses. Thompson's design of the White House in Helena is reflective of the broad geographical distribution of his clientele. One of the oldest cities in Arkansas, Helena has always been more closely associated with nearby Memphis. It is considered significant that Thompson was commissioned to design structures in Helena in light of the distance and extensive travel time involved in going from Little Rock to the eastern Arkansas city. Although Thompson designed several buildings in Helena, the White House is the only one standing. Representative of transitional design in brick and the wide geographic distribution of Charles L. Thompson's work in Arkansas, the White House is an important example of the work of Arkansas' most prolific historic architect.





STRUCTURES IN ARKANSAS REPRESENTED BY THE
 CHARLES L. THOMPSON DESIGN COLLECTION-
 A THEMATIC GROUP

Helena, Phillips Co., Arkansas
 Quadrangle Name: Latour, Ark.-Miss.
 Scale: 1:62,500
 UTM Reference: PH-077 15 720375/3823625



CONTOUR INTERVAL 5 AND 20 FEET
 DATUM IS MEAN SEA LEVEL



THIS MAP COMPLIES WITH NATIONAL MAP ACCURACY STANDARDS
 FOR SALE BY U.S. GEOLOGICAL SURVEY, DENVER, COLORADO 80225, OR WASHINGTON, D. C. 20242.
 ARKANSAS GEOLOGICAL AND CONSERVATION COMMISSION, LITTLE ROCK, ARKANSAS.
 AND MISSISSIPPI RIVER COMMISSION, VICKSBURG, MISSISSIPPI
 A FOLDER DESCRIBING TOPOGRAPHIC MAPS AND SYMBOLS IS AVAILABLE ON REQUEST