

United States Department of the Interior
National Park Service

NATIONAL REGISTER OF HISTORIC PLACES
REGISTRATION FORM

=====

1. Name of Property

=====

historic name: Little Cypress Creek Bridge

other name/site number: PH0164

=====

2. Location

=====

street & number: County Road 66G at its crossing of Little Cypress Creek

not for publication: N/A

city/town: Postelle

vicinity: X

state: AR county: Phillips code: AR 107 zip code: 72366

=====

3. Classification

=====

Ownership of Property: Public-local

Category of Property: Structure

Number of Resources within Property:

Contributing	Noncontributing	
_____	_____	buildings
_____	_____	sites
<u>1</u>	_____	structures
_____	_____	objects
<u>1</u>	<u>0</u>	Total

Number of contributing resources previously listed in the National Register: N/A

Name of related multiple property listing: Historic Bridges of Arkansas

=====

4. State/Federal Agency Certification

=====

As the designated authority under the National Historic Preservation Act of 1986, as amended, I hereby certify that this X nomination _____ request for determination of eligibility meets the documentation standards for registering properties in the National Register of Historic Places and meets the procedural and professional requirements set forth in 36 CFR Part 60. In my opinion, the property X meets _____ does not meet the National Register Criteria. _____ See continuation sheet.

Carlynn A. Slater _____ 4-5-95
Signature of certifying official Date

Arkansas Historic Preservation Program
State or Federal agency and bureau

In my opinion, the property _____ meets _____ does not meet the National Register criteria. _____ See continuation sheet.

Signature of commenting or other official Date

State or Federal agency and bureau

=====

5. National Park Service Certification

=====

I, hereby certify that this property is:

____ entered in the National Register _____
____ See continuation sheet.
____ determined eligible for the _____
National Register _____
____ See continuation sheet.
____ determined not eligible for the _____
National Register _____
____ removed from the National Register _____
____ other (explain): _____

Signature of Keeper Date
of Action

=====

6. Function or Use

=====

Historic: TRANSPORTATION Sub: Road-related

Current: TRANSPORTATION Sub: Road-related

=====
7. Description
=====

Architectural Classification:

Other

Other Description: Open masonry substructure

Materials:	foundation	<u>Concrete</u>	roof	<u>N/A</u>
	walls	<u>N/A</u>	other	<u>Steel mesh</u> <u>plates/aluminum</u> <u>beams/wood</u> <u>beams</u>

Describe present and historic physical appearance. X See continuation sheet.

=====
8. Statement of Significance
=====

Certifying official has considered the significance of this property in relation to other properties: Local.

Applicable National Register Criteria: C

Criteria Considerations (Exceptions): N/A

Areas of Significance: ENGINEERING

Period(s) of Significance: 1942-1945

Significant Dates: 1942

Significant Person(s): N/A

Cultural Affiliation: N/A

Architect/Builder: Unknown

State significance of property, and justify criteria, criteria considerations, and areas and periods of significance noted above.
X See continuation sheet.

=====
9. Major Bibliographical References
=====

See "Historic Bridges of Arkansas" MPS Nomination, Section H.

See continuation sheet.

Previous documentation on file (NPS):

- preliminary determination of individual listing (36 CFR 67) has been requested.
- previously listed in the National Register
- previously determined eligible by the National Register
- designated a National Historic Landmark
- recorded by Historic American Buildings Survey #
- recorded by Historic American Engineering Record #

Primary Location of Additional Data:

- X State historic preservation office
- Other state agency
- Federal agency
- Local government
- University
- Other -- Specify Repository:

=====
10. Geographical Data
=====

Acreage of Property: Less than one

Table with 6 columns: UTM References, Zone Easting, Northing, Zone Easting, Northing. Rows A, B, C, D with numerical values like 15, 681360, 3825560.

See continuation sheet.

Verbal Boundary Description: See continuation sheet.

Beginning at a point formed by the intersection of the northern edge of County Road 66G with a perpendicular line running parallel with the eastern end of the bridge and located approximately 25 feet to the east thereof, proceed northerly for a distance of approximately 25 feet to its intersection with a perpendicular line running parallel with the bridge's northern side; thence proceed westerly along said line for a distance of approximately 80 feet to its intersection with a perpendicular line; thence proceed southerly along said line for a distance of approximately 68 feet to its intersection with a perpendicular line; thence proceed northerly along said line for a distance of approximately 80 feet to its intersection with a perpendicular line; thence proceed westerly to the point of beginning.

Boundary Justification: See continuation sheet.

This boundary includes all the property historically associated with this resource.

=====
11. Form Prepared By
=====

Name/Title: Ken Story, National Register/Survey Coordinator
Organization: Arkansas Historic Preservation Program Date: 04/04/95
Street & Number: 323 Center Street, Suite 1500 Telephone: (501) 324-9880
City or Town: Little Rock State: AR Zip: 72201

United States Department of the Interior
National Park Service

National Register of Historic Places Continuation Sheet

Section number 7 Page 1

Description

Located on Phillips County Road 66G at the point where it crosses the Little Cypress Creek, the Little Cypress Creek Bridge is a masonry substructure bridge that is distinguished by its use of textured metal deck plating and an aluminum multi-beam substructure, all of which rests upon reinforced concrete piers. It consists of a total of two spans, each of which measures 15 feet in length. Its total length is 30 feet and its overall width is 18 feet. The deck material is steel mesh plates supported upon aluminum beams, and the piers and abutments are constructed of reinforced concrete.

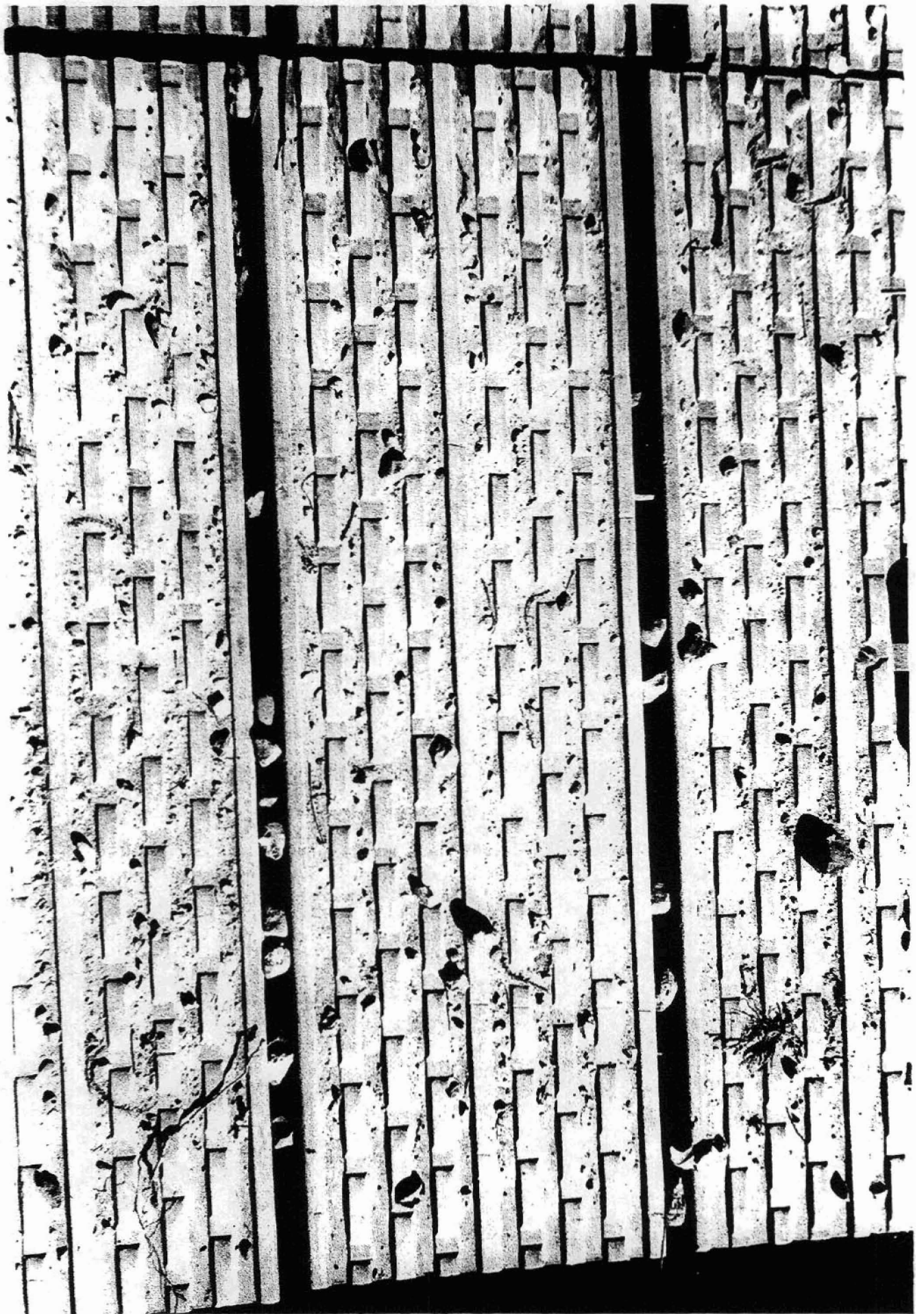
United States Department of the Interior
National Park Service

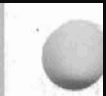
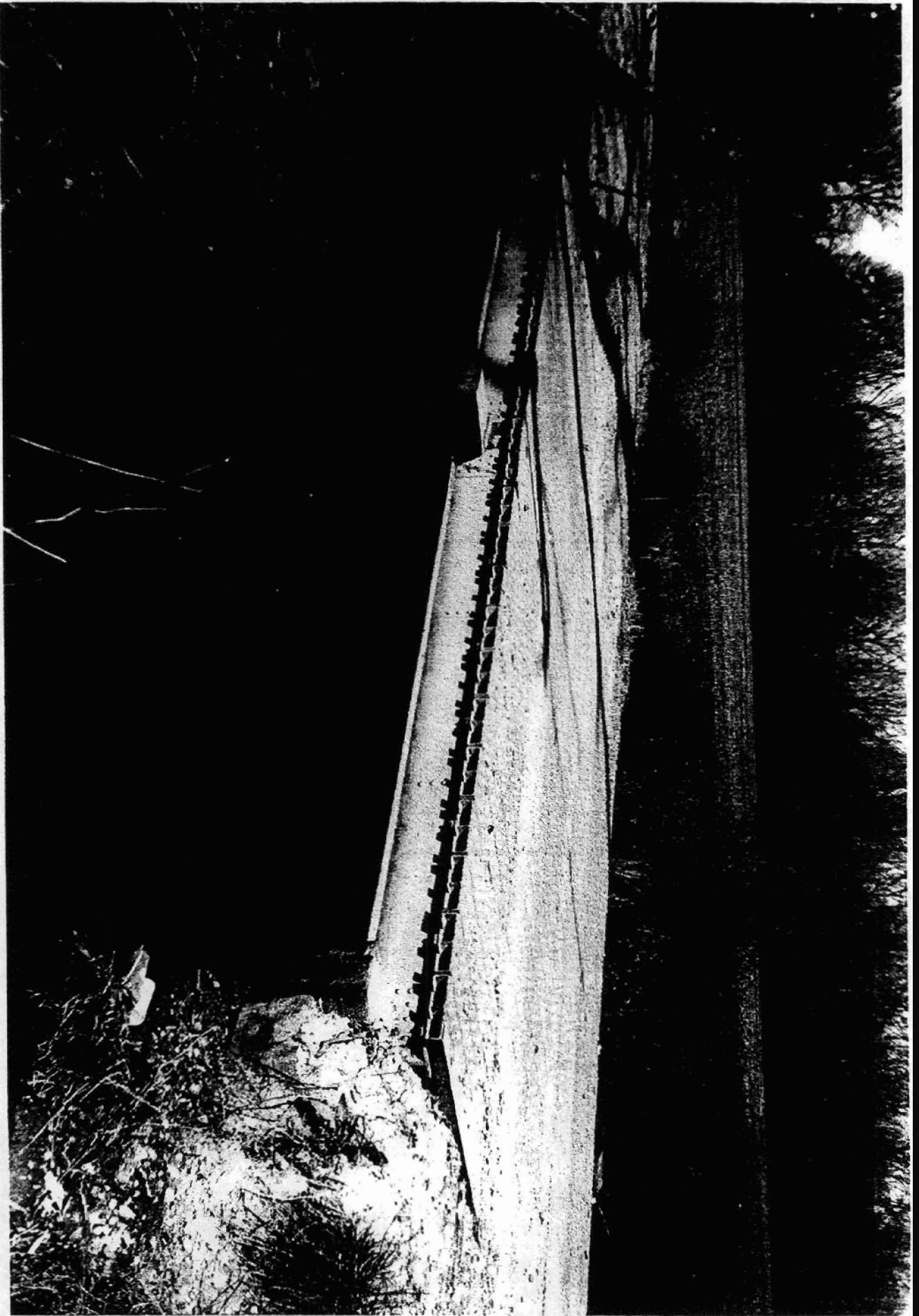
National Register of Historic Places Continuation Sheet

Section number 8 Page 1

Significance

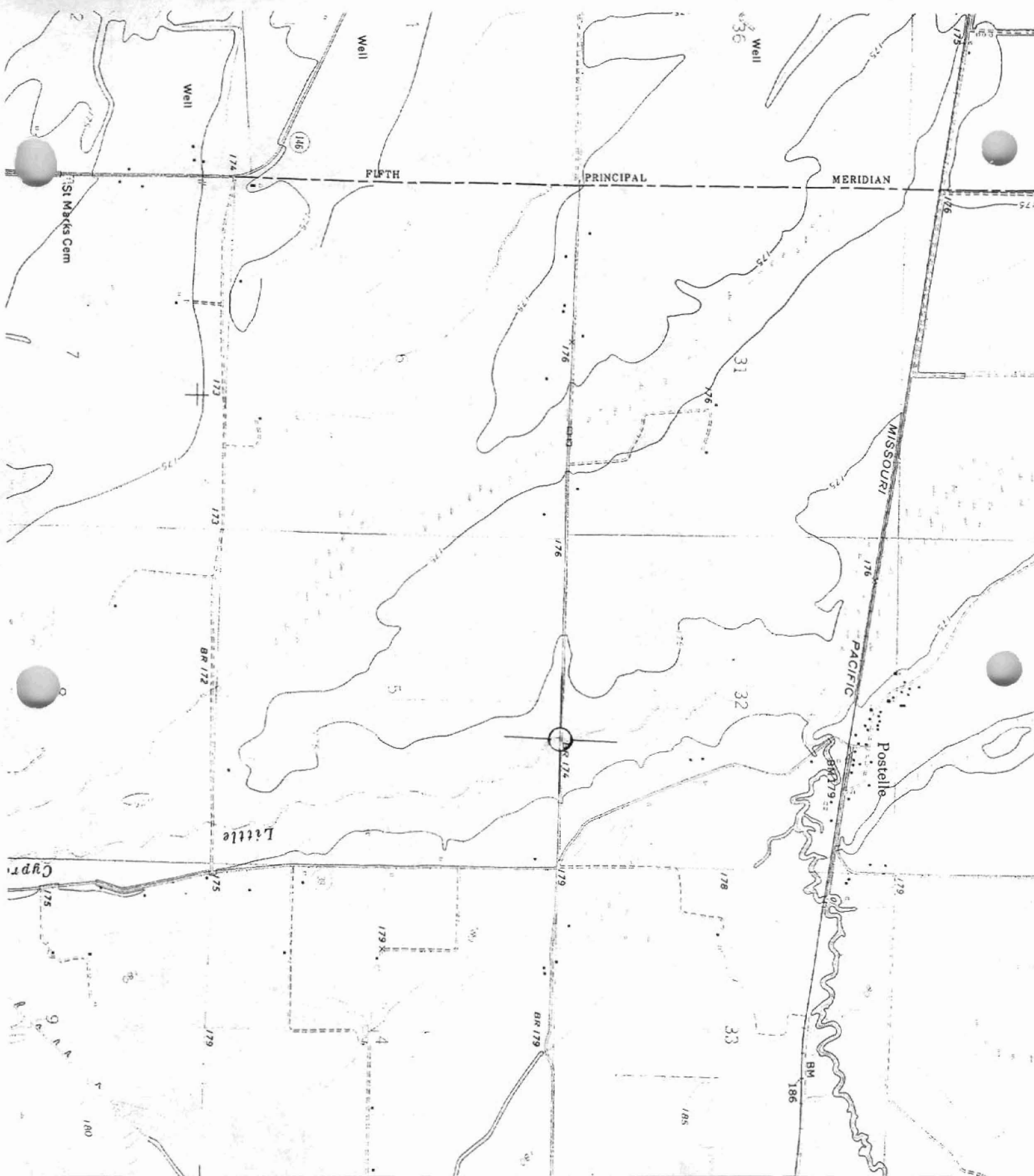
Constructed in 1942, the Little Cypress Creek Bridge is associated with the *World War II Era* historic context and is of the aluminum multi-beam type. Though the identity of its original designer does not survive, it was constructed in conjunction with the Arkansas State Highway Commission and thus may well have been designed by one of that state agency's engineers. Given its relatively intact condition it retains sufficient integrity to remain associated with its historic period and is thus locally eligible under Criterion C.





1

2



(MARVELL)
7853 III SW

Little Creek (YORKS)
CRUISE REPORT
15/6815601
3825560