

Book cover

NR listed 5/26/95

United States Department of the Interior
National Park Service

NATIONAL REGISTER OF HISTORIC PLACES
REGISTRATION FORM

1. Name of Property

historic name: Little Buffalo River Bridge

other name/site number: NW0037

2. Location

street & number: State Highway 327 at crossing of Little Buffalo River

not for publication: N/A

city/town: Parthenon

vicinity: X

state: AR county: Newton code: AR 101 zip code: 72666

3. Classification

Ownership of Property: Public-state

Category of Property: Structure

Number of Resources within Property:

Contributing Noncontributing

<u> </u>	<u> </u>	buildings
<u> </u>	<u> </u>	sites
<u> 1 </u>	<u> </u>	structures
<u> </u>	<u> </u>	objects
<u> 1 </u>	<u> 0 </u>	Total

Number of contributing resources previously listed in the National Register: N/A

Name of related multiple property listing: Historic Bridges of Arkansas

=====
4. State/Federal Agency Certification
=====

I, the designated authority under the National Historic Preservation Act of 1986, as amended, I hereby certify that this X nomination _____ request for determination of eligibility meets the documentation standards for registering properties in the National Register of Historic Places and meets the procedural and professional requirements set forth in 36 CFR Part 60. In my opinion, the property X meets _____ does not meet the National Register Criteria. _____ See continuation sheet.

Cathryn A. Slater _____ 4-11-95
Signature of certifying official Date

Arkansas Historic Preservation Program
State or Federal agency and bureau

In my opinion, the property _____ meets _____ does not meet the National Register criteria. _____ See continuation sheet.

Signature of commenting or other official Date

State or Federal agency and bureau

=====
5. National Park Service Certification
=====

I, hereby certify that this property is:

- _____ entered in the National Register _____
_____ See continuation sheet.
- _____ determined eligible for the National Register _____
_____ See continuation sheet.
- _____ determined not eligible for the National Register _____
- _____ removed from the National Register _____
- _____ other (explain): _____

Signature of Keeper Date of Action

=====
6. Function or Use
=====

Historic: TRANSPORTATION Sub: Road-related

Current: TRANSPORTATION Sub: Road-related

=====

9. Major Bibliographical References

=====

See "Historic Bridges of Arkansas" MPS Nomination, Section H.

___ See continuation sheet.

Previous documentation on file (NPS):

- preliminary determination of individual listing (36 CFR 67) has been requested.
- previously listed in the National Register
- previously determined eligible by the National Register
- designated a National Historic Landmark
- recorded by Historic American Buildings Survey # _____
- recorded by Historic American Engineering Record # _____

Primary Location of Additional Data:

- X State historic preservation office
- Other state agency
- Federal agency
- Local government
- University
- Other -- Specify Repository: _____

=====

10. Geographical Data

=====

Acreage of Property: Less than one

UTM References:	Zone	Easting	Northing	Zone	Easting	Northing
A	15	479540	3980300	B	15	_____
C	15	_____	_____	D	15	_____

___ See continuation sheet.

Verbal Boundary Description: ___ See continuation sheet.

Beginning at a point formed by the intersection of the northwestern edge of State Highway 327 with a perpendicular line running parallel with the northeastern end of the bridge and located approximately 25 feet to the northeast thereof, proceed northwesterly for a distance of approximately 25 feet to its intersection with a perpendicular line running parallel with the bridge's northwestern side; thence proceed southwesterly along said line for a distance of approximately 262 feet to its intersection with a perpendicular line; thence proceed southeasterly along said line for a distance of approximately 72.3 feet to its intersection with a perpendicular line; thence proceed northeasterly along said line for a distance of approximately 262 feet to its intersection with a perpendicular line; thence proceed northwesterly to the point of beginning.

Boundary Justification: ___ See continuation sheet.

This boundary includes all the property historically associated with this resource.

=====
11. Form Prepared By
=====

Name/Title: Ken Story, National Register/Survey Coordinator
Organization: Arkansas Historic Preservation Program Date: 04/04/95
Street & Number: 323 Center Street, Suite 1500 Telephone: (501) 324-9880
City or Town: Little Rock State: AR Zip: 72201

United States Department of the Interior
National Park Service

National Register of Historic Places Continuation Sheet

Section number 7 Page 1

Description

Located on State Highway 327 at its crossing of the Little Buffalo River (approximately 1.5 miles northwest of Parthenon and 1/2 mile south of Union Hill Cemetery), the Little Buffalo River Bridge is of the open masonry substructure (concrete tee beam) type. It consists of a total of seven spans with a maximum span length of 30 feet. The total bridge length is 212 feet, the width is 19.1 feet curb to curb, and the overall width is 22.3 feet. The two abutments and six piers are constructed of stone and concrete, and the deck material is reinforced concrete with asphalt overlay. A reinforced concrete balustrade runs down each side of the deck.

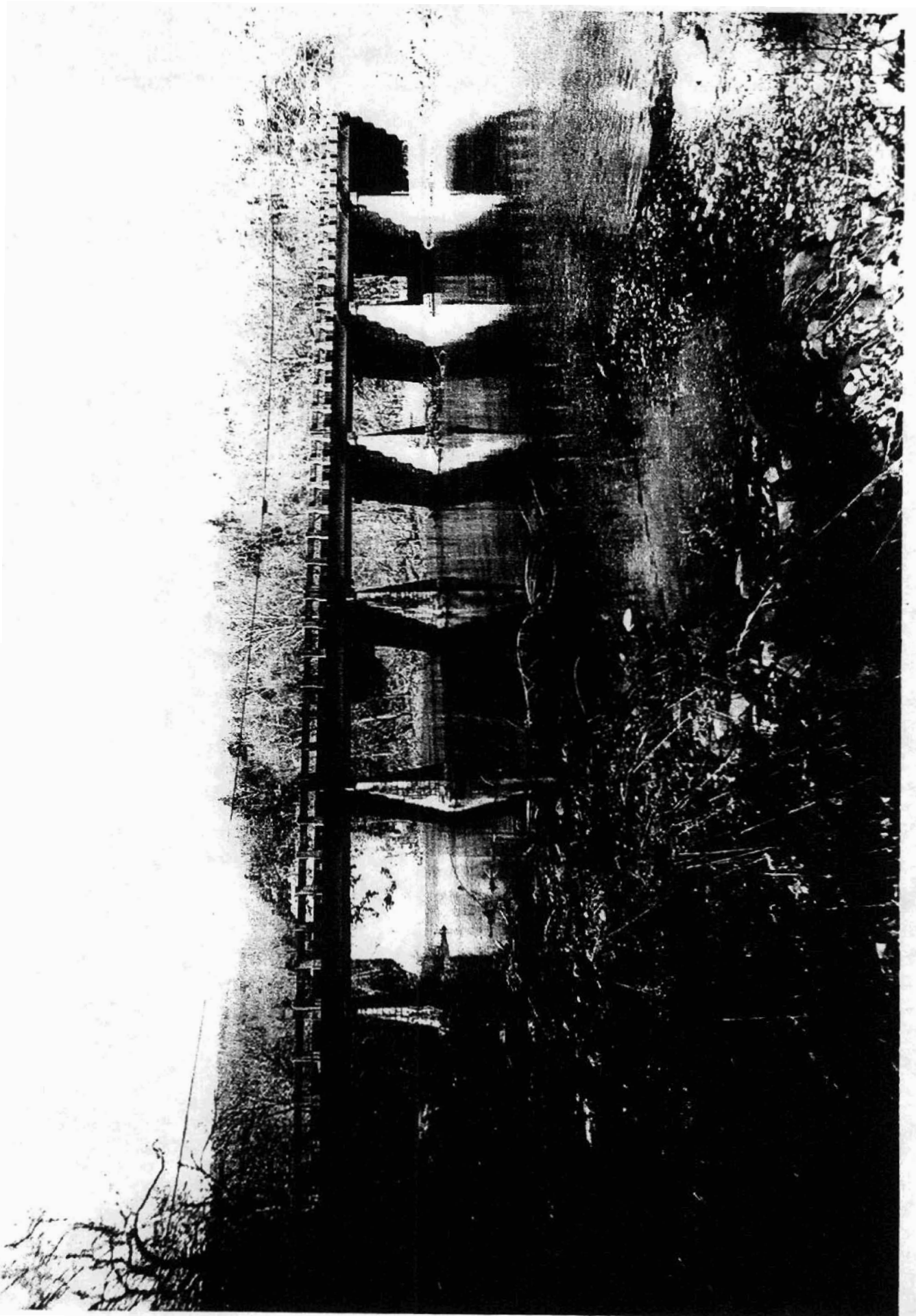
United States Department of the Interior
National Park Service

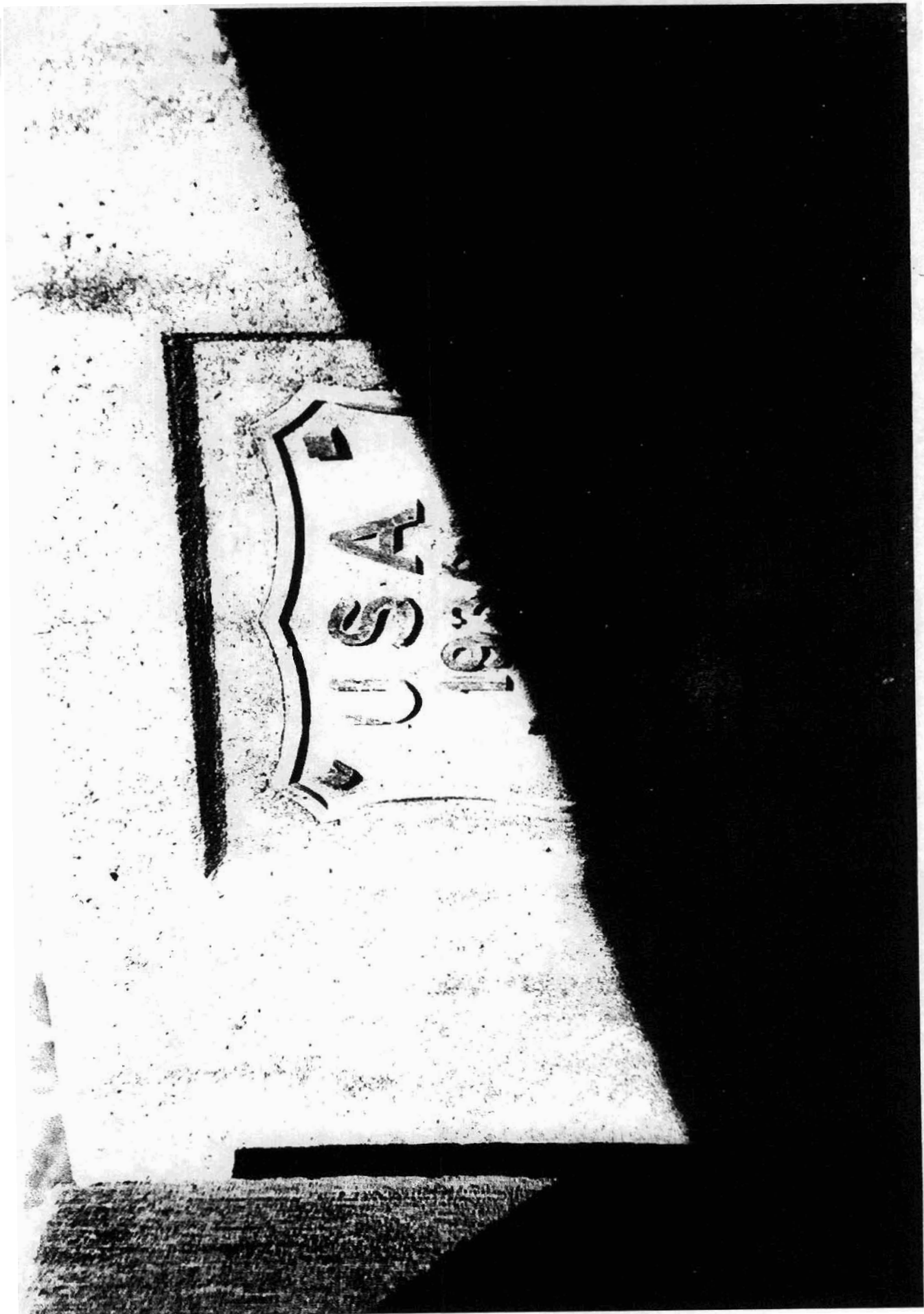
National Register of Historic Places Continuation Sheet

Section number 8 Page 1

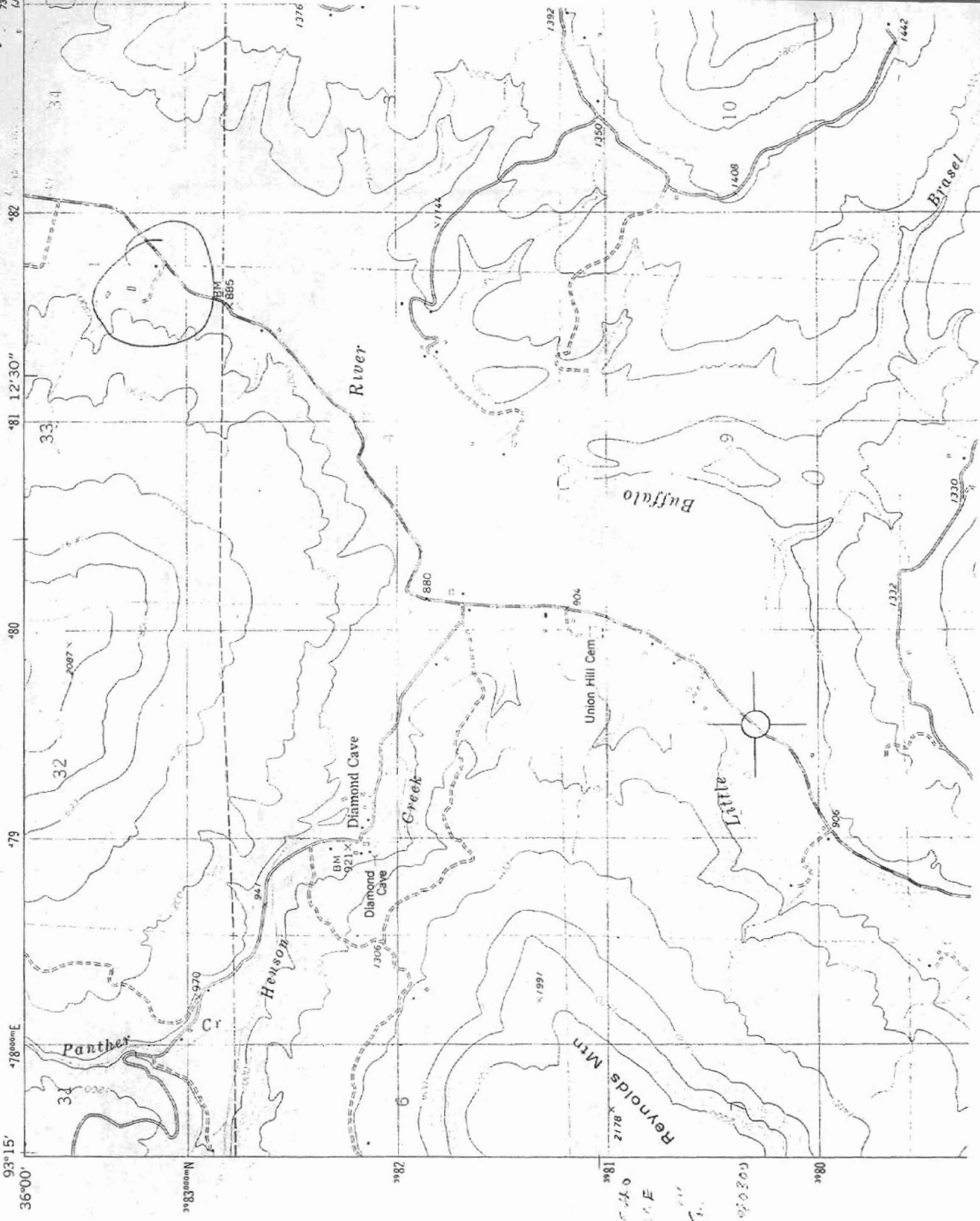
Significance

Constructed in 1939, the Little Buffalo River Bridge is associated with the *Arkansas Highway and Transportation Era* historic context and is of the open masonry substructure type. Though the identity of its original designer does not survive, it was constructed in conjunction with the Arkansas State Highway Commission and thus may well have been designed by one of that state agency's engineers, if not by one of the public works engineers. Given its relatively intact condition it retains sufficient integrity to remain associated with both the WPA and its historic period; it is thus locally eligible under Criteria A and C.





UNITED STATES
DEPARTMENT OF THE INTERIOR
GEOLOGICAL SURVEY



Little Buffalo
River Bridge
Newman Co.
15/479540/390300