

United States Department of the Interior  
National Park Service

National Register of Historic Places  
Inventory—Nomination Form

EXP. 12/31/84

15-1000-61

For NPS use only
received
Date entered

Continuation sheet

210

Item number 1, 2, 4, 6, & 7

Page 1

INDIVIDUAL DATA SHEET

General Description

Code: NE-074

Congressional District: Fourth

Name: T.C. McRae House

Current Owner: Mr. and Mrs. John McRae

Address: 506 E. Elm  
Prescott, Arkansas

Address: 506 E. Elm  
Prescott, Arkansas 71857

County: Nevada

Architectural Information

Architectural Firm: Thompson and Harding

Date of Construction: 1919

Stylistic Influence: Craftsman

Original Use: Residence

Present Use: Residence

Geographical Information

UTM Reference: 15 465040/3739610

Acreage: Less than one

Verbal Boundary Description: Brad Scott Addition to the City of Prescott  
NW 147' Lot 1 Block 58

Condition

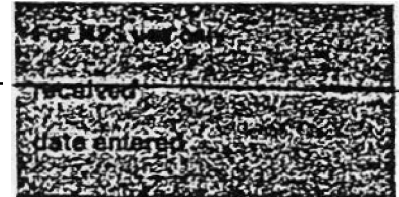
Excellent  
 Good  
 Fair

Deteriorated  
 Ruins  
 Unexposed

Unaltered  
 Altered

United States Department of the Interior  
National Park Service

National Register of Historic Places  
Inventory—Nomination Form



Continuation sheet 211

Item number 7 &amp; 8

Page 2

Code: NE-074

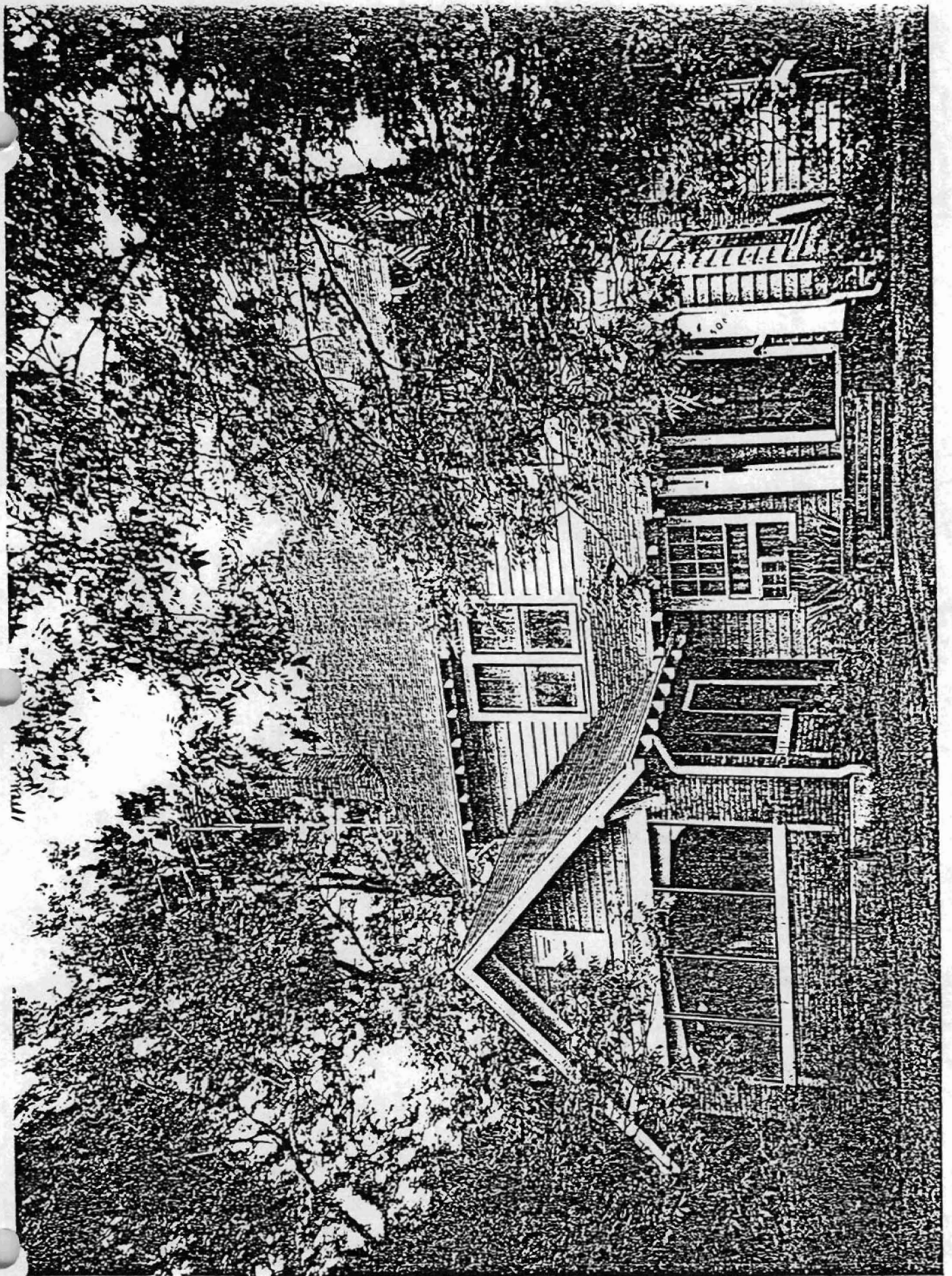
(506 E. Elm, Prescott, AR)

Physical Description

The McRae House in Prescott was designed by the Thompson and Harding firm in 1919. Of wood frame construction, it is faced with wide weatherboards, and is situated on a large corner lot which slopes slightly toward the street. The steep gable end roof, the somewhat narrow facade and the two interior brick side chimneys combine to create a dominant vertical emphasis. A shed roof covers a small entrance porch supported by two plain columns and extends across the facade to the point where it joins the projecting one-story screened porch which has a long segmental arch shaped opening facing the street. French doors lead from the house onto this porch. The front door has a long multi-panes window. Other windows are sash type with eight-over-one or six-over-one lights. Large brackets at the porch eaves and exposed purlins add a Craftsman touch to the simple house.

Statement of Significance

The Thompson and Harding firm in 1919 designed a residence for T. C. McRae in Prescott, Arkansas. The McRae family commissioned the firm to do many buildings in the cities of Prescott and Hope, many of which were commercial structures. Of the remaining buildings representing the prominence of the McRae family in southwestern Arkansas, the T. C. McRae House in Prescott is one of the more unusual residences. Vertical in emphasis, this home derives its picturesqueness from its distinctive asymmetry. The T. C. McRae House features a small entrance porch supported by two plain columns. It extends across the facade to join a large one-story screened-in porch which projects from the east end of the facade. Only a block away from the D. L. McRae House (NE-074), this house is enhanced by a lushly landscaped setting. A long sidewalk shaded by large trees leading from the street to the T. C. McRae House gives a friendly southern feeling to the two-story frame residence.





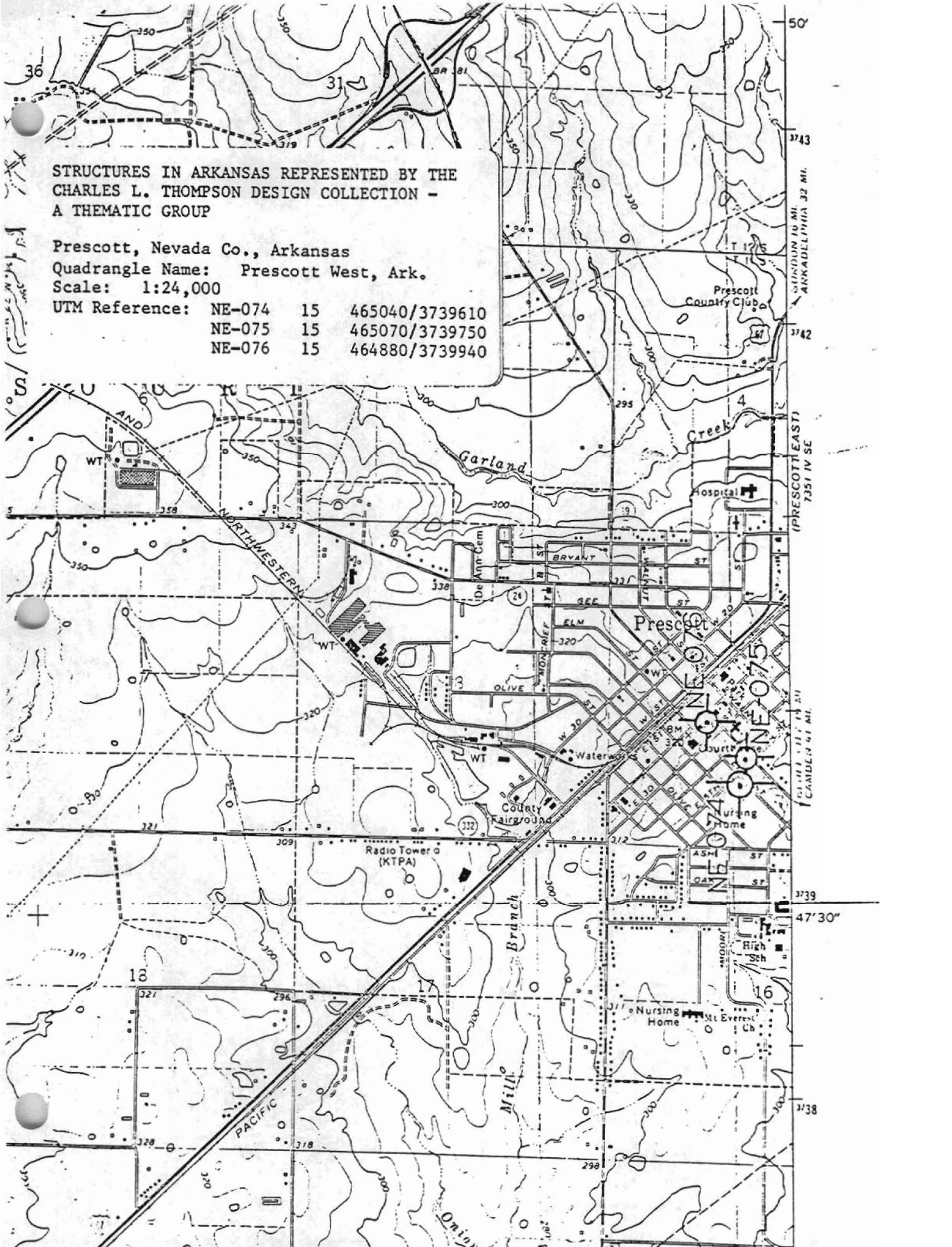
STRUCTURES IN ARKANSAS REPRESENTED BY THE  
CHARLES L. THOMPSON DESIGN COLLECTION -  
A THEMATIC GROUP

Prescott, Nevada Co., Arkansas

Quadrangle Name: Prescott West, Ark.

Scale: 1:24,000

UTM Reference:	NE-074	15	465040/3739610
	NE-075	15	465070/3739750
	NE-076	15	464880/3739940



STUNTON 10 MI  
ARKADLEPHIA 32 MI.

(PRESCOTT EAST)  
7351 IV SE

CAMDEN 41 MI

3739

47' 30"

3738